

COASTAL CAROLINA UNIVERSITY presents the

COASTAL CAROLINA

2014

**KIDS
CAMP**



Summer camp June 9-August 8, 2014
for ages 6-10 and 10-12



South Strand Litchfield Education Center
14427 Ocean Highway, Litchfield Landing, Pawleys Island, SC 29585

FOR MORE INFORMATION:

Visit our website at coastal.edu/outreach or call Academic Outreach at 843-349-6584, 843-234-3424 or 843-349-2767.

Sponsored by Coastal Carolina University's Division of Academic Outreach

Enjoy the fun of summer camp at Coastal Carolina University's

2014 COASTAL CAROLINA

KIDS CAMP!



June 9-13, 2014

SUPER SIZE SCIENCE

8:30 a.m. to 12:30 p.m. • \$75 • AGES 6-10

YSCIE 100 L01 LEC1

Do you ever get bored with science? Here's your opportunity to get messy. Experiment and learn how to super-size science. Why does a can of regular soda sink in water, but a can of diet soda floats? What causes a volcano to erupt? Roll up your sleeves and get ready to conduct experiments and analyze the results as we Super-Size Science together.

CARD CRAFTING

8:30 a.m. to 12:30 p.m. • \$75 • AGES 6-10

YART 201 L01 LEC1

Do you love to color, cut and glue paper? Learn to make greeting cards for birthdays and holidays. Give them to your family members and friends. We'll use many tools to cut out paper and to crimp and press shapes into cardstock. It is so much fun to create cards and even better to give them away as gifts.

CSI CRIME SCENE INVESTIGATOR

1 to 5 p.m. • \$75 • AGES 6-10 • YSCIE 156 L01 LEC1

Do you like to solve mysteries? If so, then this camp is for you! You'll collect evidence, analyze it and solve the crimes. You'll learn mysterious codes so you can send covert messages to your friends. During this camp, you will discover who stole the cookies from the cookie jar. You'll dust for fingerprints and search for clues and discover the investigator in you.

JUST BEAD IT

1 to 5 p.m. • \$75 • AGES 6-10 • YART 101 L01 LEC1

Join this fun and creative camp that will stir up your imagination! You'll have fun as you learn how to create homemade jewelry for yourself, friends and family. Create homemade beads, enjoy different painting projects and enjoy getting creative during this camp. If you love to accessorize, then this camp is for you!

South Strand

Litchfield Education Center
14427 Ocean Highway, Litchfield Landing, Pawleys Island, SC 29585

June 16-20, 2014

FABULOUS FUN FIESTA

8:30 a.m. to 12:30 p.m. • \$75 • AGES 6-10

YSPAN 100 L01 LEC1

Let's come together and learn about Latin American cultures, as well as Spanish commands, daily expressions, vocabulary and Latin cooking. We'll make a piñata, learn the three basic steps to making salsa and even form our own Latin band with congas and bongos. Friday we'll celebrate with a Fiesta Day complete with music, dance, food and more! Family and friends are encouraged to join us at 11 a.m. on Friday.

HOCUS POCUS: PERFORMING MAGIC CAMP

8:30 a.m. to 12:30 p.m. • \$75 • AGES 6-10

YPERS 222 L01 LEC1

You'll learn techniques and tricks from a professional magician in this camp and be able to demonstrate your magic skills during a performance on Friday at noon, and your family and friends are encouraged to attend. Hocus Pocus camp will teach you the art of illusion, build self-confidence and help develop strong communication skills.

MAGICAL WIZARD CAMP

1 to 5 p.m. • \$75 • AGES 6-10 • YSCIE 152 L01 LEC1

Don wizard hats, capes and wands for the celebration of Magical Wizard Camp. Come one, come all, all ye wizards! Welcome to the ultimate magic and wizardry adventure camp where you'll create and name your potions, cast your spells, polish a magic stone and maybe create your very own cape, hat and wizard wand. If you enjoy the world of magic and fantasy, then this camp is perfect for you!

CATCH A SHOOTING STAR CAMP

1 to 5 p.m. • \$75 • AGES 6-10 • YSCIE 205 L01 LEC1

Have you ever wanted to explore the universe without leaving your backyard? Here's your chance! You will investigate the sun, stars, black holes, spinning neutron stars or magnetars and much more. Come learn how stars form, investigate why they explode and just how far away our nearest neighbor is in our galaxy. Let's explore space together and maybe we'll make our very own discoveries!

BEGINNING LINE DANCING

1 to 5 p.m. • \$75 • AGES 10-12 • YMUSC 203 L01 LEC1

Stretch, move and have fun to a beat. Exercise while learning to do the most popular line dances. Come join in the fun. Parents and friends are encouraged to attend the show at 4:30 p.m. on Friday.

June 23-27, 2014

THE GLEE CLUB

8:30 a.m. to 12:30 p.m. • \$75 • AGES 6-10
YMUSC 204 L01 LEC1

Are you a rising star? Come out and find your spotlight! You'll sing, dance and entertain your way through this camp that was made for everyone! You'll receive coaching in all aspects of musical theater, including dancing, singing and acting. A final performance will be on Friday, at 11:30 a.m. Family and friends are encouraged to attend.

JURASIC DINOSAUR ADVENTURE CAMP

8:30 a.m. to 12:30 p.m. • \$75 • AGES 6-10
YSCIE 150 L01 LEC1

Calling all young paleontologists! Let's travel back in time 230 million years to the era when dinosaur's still roamed the earth. You'll get the opportunity to make a fossil, build dinosaur models and play dino-games. You'll learn creative ways to remember those difficult dinosaur names, discover how to hunt for dinosaurs and explore the dinosaurs bone anatomy. We'll make every effort to make it back to camp before the end of the Cretaceous period! Without a doubt, you will really dig this class!

STREET HIP HOP

1 to 5 p.m. • \$75 • AGES 6-10 • YMUSC 244 L01 LEC1

Develop your own fun sense of style with easy-to-follow instructions, including warming-up to the latest music. Hip-hop will help you to increase flexibility, coordination and strength and improve muscle tone, while developing leadership skills and learning to work as a team. Students should wear comfortable clothing, shoes and bring water to class each day. A performance will be held on Friday at 11 a.m. Friends and family are encouraged to attend.

SUGARY CHEF

1 to 5 p.m. • \$75 • AGES 6-10 • YSCIE 200 L01 LEC1

Let's decorate cookies, make fancy fruit kebabs and candy sushi during this camp that combines creativity with yummy tastes. You'll decorate aprons and create a cookbook full of recipes that you can prepare for your family and friends.

July 7-11, 2014

AROUND THE WORLD IN FIVE DAYS

8:30 a.m. to 12:30 p.m. • \$75 • AGES 6-10
YHIST 101 L01 LEC1

Over the course of five days, you'll circle the globe to learn about geography, culture, foods and more in five distinct regions of the world.

CANDY CHEMISTRY CAMP

8:30 a.m. to 12:30 p.m. • \$75 • AGES 6-10
YSCIE 158 L01 LEC1

Join Candy Chemistry Camp where you can sharpen your life skills as you stir up your creativity. Come experiment with numerous ways to sweeten your treats to please your palate. You'll get the opportunity to mix ingredients, experiment and have taste tests. You'll explore a smorgasbord of flavors and discover new flavors each day during this culinary experience. You'll learn about nutrition, calories, natural sugars, processed sugars and the benefits of exercise when you've indulged in too many calories. Come ready to wake up your taste buds and enjoy a week of exploring all types of sweet treats. *Please bring a white T-shirt with you the first day of camp.*

IT'S ALL ABOUT ME, ME, ME!

1 to 5 p.m. • \$75 • AGES 6-10 • YART 230 L01 LEC1

Have you ever wanted to create your own personal memory book with scrapbooking? We will focus each day on a different theme to add to our books. Themes will include friends and family, holidays, sports, vacations, birthdays or any special occasion. You will need to bring photos with you on the first day of camp. At the end of the week you'll have a creative and colorful book to share with your friends and family, and it will be ALL ABOUT YOU!

DRAMA WORKSHOP

1 to 5 p.m. • \$75 • AGES 6-10 • YTHEA 144 L01 LEC1

Join this theatrical workshop that will teach young thespians the art of improvisation, scripting, dialect, make-up, mask-making, stage combat, musical theater and more. A final performance will be on Friday at 4 p.m. Family and friends are encouraged to attend.

JUNIOR ARCHITECTURE

1 to 5 p.m. • \$75 • AGES 10-12 • YMATH 101 L01 LEC1

Calling all young junior architects! This hands-on camp will introduce you to specific architectural concepts before building your structure(s) while experimenting with form and materials. You'll transform sticks, stones, bricks and other common supplies into many different structures while building a miniature community.

No camp the week of July 4...

COASTAL CAROLINA 2014 KIDS CAMP!

South Strand Litchfield Education Center
14427 Ocean Highway, Litchfield Landing, Pawleys Island, SC 29585

July 14-18, 2014

MATH MANIA

8:30 a.m. to 12:30 p.m. • \$75 • AGES 6-10
YMATH 706 L01 LEC1

Math can be a blast! This fun and challenging camp offers a hands-on approach to computation, geometry, measurement, graphing, logic, reasoning and critical thinking. Don't miss this fun-filled week and an opportunity to sharpen your math skills.

GUTS, GOOP, GLOBS AND GAS

8:30 a.m. to 12:30 p.m. • \$75 • AGES 6-10
YSCIE 188 L01 LEC1

Roll up your sleeves and be ready to create experiments and learn about the science of Grossology, the science of really gross things! Come prepared to have an ooey, gooey, stimulating good time as you experiment, explore, create and get messy, while learning more about gross guts, giant goops, gooey globs and gas that makes you gag!

PHOTOGRAPHY FOR KIDS

8:30 a.m. to 12:30 p.m. • \$75 • AGES 6-10
YPHO 301 L01 LEC1

Come join the fun in learning how to use a camera, how to use lighting – natural, on camera and lighting setup and various exercises in composition. *NOTE: Students must have their own camera.*

COASTAL PIRATE SPLASH

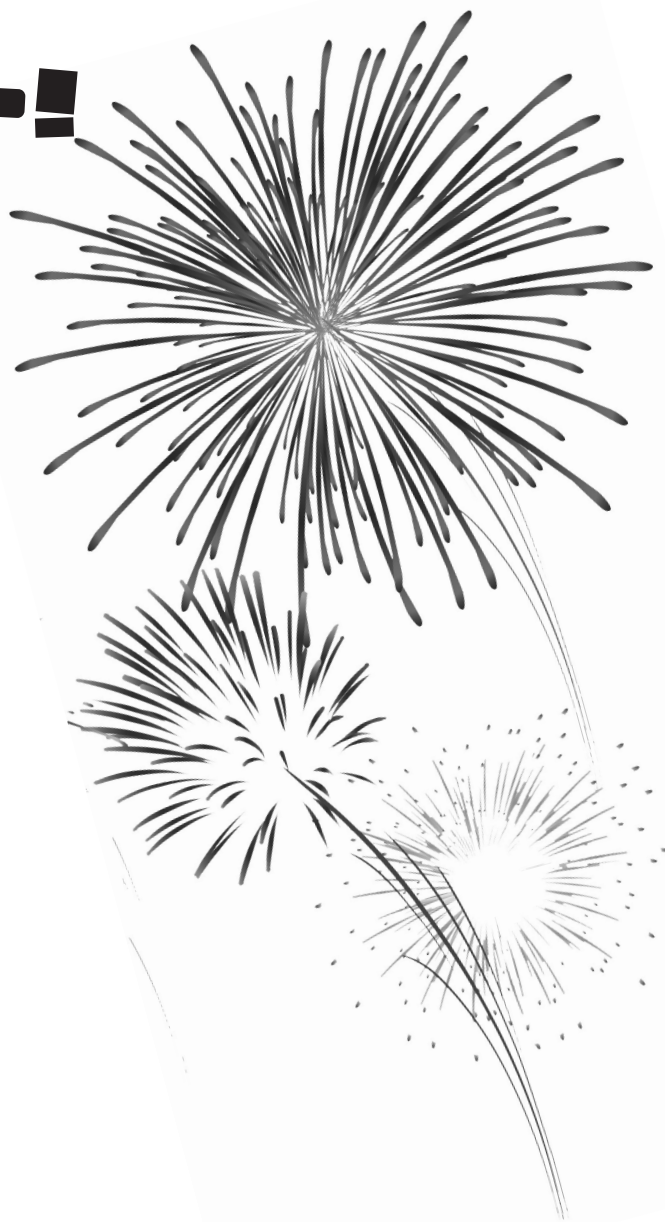
1 to 5 p.m. • \$75 • AGES 6-10 • YPERS 151 L01 LEC1

Aargh, ye mateys! Shiver ye timbers, buckle your swashes and let's all set sail to frolic in the briny deep. Come ye buccaneers, we'll walk the plank and plunder together to find a treasure chest full of fun and games. Let's put a message in a bottle or try your hand (or hook) at sand art, and become a Captain Hook look-a-like on Friday when you enter ye pirate camp.

INCREDIBLE EDIBLE ART

1 to 5 p.m. • \$75 • AGES 6-10 • YART 205 L01 LEC1

This camp will be lip-smacking good as you combine art and food together to create edible masterpieces. Do you have skills to make edible creations like Graham Crackers Mosaics and Edible Sculpture Dough? Can you design the best chef hat or create an apron that will make you the envy of every chef? You'll create masterpieces using



candy, cereal, cookies, fruits, vegetables and many other ingredients. You'll also get a chance to create your very own recipes and bring home a cookbook of incredible edible artwork to whip up and share with your family or friends. *Please bring a white T-shirt with you the first day of camp.*

MOTION, MOVE AND MANEUVER

1 to 5 p.m. • \$75 • AGES 10-12 • YPERS 100 L01 LEC1

If you like to turn up the music, wiggle and giggle, then this camp is for YOU! This fast-paced, dynamic, heart-thumping and energetic dance class will be filled with Latin rhythms, belly dancing and easy-to-follow moves. At the end of the week? You'll get the chance to show off your skills in a final performance that will be sure to have your family and friend's toes tapping. Parents and friends are encouraged to attend the show at noon on Friday.

July 21-25, 2014

STREET HIP HOP

8:30 a.m. to 12:30 p.m. • \$75 • AGES 6-10
YMUSC 244 L02 LEC1

Develop your own funky sense of style with easy-to-follow instructions that includes warming-up to the latest music. Hip-hop will help you to increase flexibility, coordination, and strength and improve muscle tone, while developing leadership skills and learning to work as a team. Students should wear comfortable clothing and shoes and bring water to class each day. A performance will be held on Friday, at 11 a.m. Friends and family are encouraged to attend.

S.C. SEASHELL CRAFTS

8:30 a.m. to 12:30 p.m. • \$75 • AGES 6-10
YART 400 L01 LEC1

Use shells from the South Carolina coast to create beautiful crafts. Come join in the fun, making gifts for your bedroom or to give to a special person.

ARTISTIC SANDTASTIC BEACH PARTY

1 to 5 p.m. • \$75 • AGES 6-10 • YART 222 L01 LEC1

No need for any sunscreen for this ultimate artistic beach party. Just bring your imagination instead! We'll paint with watercolors and salt and learn different techniques using material straight from our own beach. You'll get the chance to create seascapes and even design your own surfboard. Please bring any items you've recovered from our coast to share with the class. Come out and join this ultimate beach party!

MARDI GRAS IN JULY: FUN MASK-MAKING AND MORE!

1 to 5 p.m. • \$75 • AGES 6-10 • YART 303 L01 LEC1

Come create colorful masks using newspaper, buttons, yarn and your imagination. Let's get creative and learn more about animals in the wild in this fun, creative and festive camp. We'll have our own Mardi Gras party the last day of camp and maybe our very own parade. Our Mardi Gras parade celebration will be on Friday at 4 p.m.



EXPRESS YOURSELF/HANDS-ON CAMP

1 to 5 p.m. • \$75 • AGES 10-12 • YART 110 L01 LEC1

Learn more about yourself and others through creative expression! You will get the chance to express yourself through writing, dance and art. Everyone has special talents and immeasurable creativity, and during this week of Express Yourself camp, you'll get a chance to share your talents on stage with a supportive audience on Friday at 4 p.m., we'll welcome family and friends to share in your creative experience which, will allow them to cheer you on through stories, dance and display of your creative work. *Please bring a white T-shirt with you the first day of camp.*

July 28-August 1, 2014

CONFIDENT, CREATIVE ME!

8:30 a.m. to 12:30 p.m. • \$75 • AGES 6-10
YPERS 205 L01 LEC1

This camp will help you boost your confidence, help with your public speaking and create a better YOU. Eleanor Roosevelt once said, "A good leader inspires people to have confidence in the leader; a great leader inspires people to have confidence in themselves." Come join us in making every effort to build your self-esteem, and leave camp a much more confident and creative YOU!

BEGINNING LINE DANCING

8:30 a.m. to 12:30 p.m. • \$75 • AGES 6-10
YMUSC 203 L02 LEC1

Stretch, move and have fun to a beat. Exercise while learning to do the most popular line dances. Come join in the fun. Parents and friends are encouraged to attend the show at noon on Friday.

THE GLEE CLUB

1 to 5 p.m. • \$75 • AGES 6-10 • YMUSC 204 L02 LEC1

Are you a rising star? Come out and find your spotlight! You'll sing, dance and entertain your way through this camp that was made for everyone! You'll receive coaching in all aspects of musical theater, including dancing, singing and acting. A final performance will be on Friday, at 4 p.m. Family and friends are encouraged to attend.

SHAKE, EXPLODE, RUMBLE!

1 to 5 p.m. • \$75 • AGES 6-10 • YSCIE 202 L01 LEC1

Would you like to be a geologist? Did you know that aluminum is the most common mineral in your backyard? You'll learn about different sedimentary layers and be able to explain what igneous rocks are! You'll even learn about the law of superposition. If you like to play with rocks, think that volcanoes are really cool or you are just captivated by the world of dinosaurs, then you'll love Shake, Explode and Rumble camp.

COASTAL CAROLINA 2014 KIDS CAMP!

August 4-8, 2014

CALLING ALL SUPERHEROES! POW! ZAP! BAM!

8:30 a.m. to 12:30 p.m. • \$75 • AGES 6-10
YPERS 150 L01 LEC1

Come join forces to expand your imagination and learn how to become the ultimate superhero. Come ready to experience action-packed adventure daily. You'll have fitness drills, learn self-defense and talk about street safety scenarios. Learn character-building traits that all superheroes should possess. Don't miss this exciting adventure!

ENERGIZING EXPERIMENTS

8:30 a.m. to 12:30 p.m. • \$75 • AGES 6-10
YSCIE 201 L01 LEC1

The budding scientist will love this scientific potpourri loaded with experiments. Learn the technique of gathering and studying data as you experiment with the mighty molecule, make a compass, test for acid rain, building strong structures and more.

SLEUTH ACADEMY

1 to 5 p.m. • \$75 • AGES 6-10 • YSCIE 157 L01 LEC1

Step into the shoes of a detective as you uncover the science involved in evidence gathering. Analyze and practice detective work and use investigative techniques and scientific methods, which will allow you to solve mysteries behind the crime scenes. Maybe you can find out who stole the cookies from the cookie jar or how many licks it takes to get to the center of a Tootsie Pop? Become a super sleuth, and learn clever ways of performing investigative tasks as you have a hands-on view of the science that gumshoes use every day to solve mysteries.

MAGNIFICENT MUSICAL THEATER

1 to 5 p.m. • \$75 • AGES 6-10 • YMUSC 202 L01 LEC1

Come join this weeklong workshop providing a foundation for performing in musical theater. Learn the basics of acting, teamwork and stage movement. Sing, dance and learn to entertain, and get the opportunity to perform on stage. Come join the fun, and learn how to put on a show! A final performance will be on Friday at 3:30 p.m. Family and friends are encouraged to attend.



coastal.edu/outreach



2014 COASTAL CAROLINA KIDS CAMP!

Register me for these South Strand classes!

(Select classes attending and submit with completed Registration Form.)

Sponsored by Coastal Carolina University's
Division of Academic Outreach

June 9-13, 2014

- SUPER SIZE SCIENCE 8:30 a.m. to 12:30 p.m. • \$75 • AGES 6-10 • YSCIE 100 L01 LEC1
- CARD CRAFTING 8:30 a.m. to 12:30 p.m. • \$75 • AGES 6-10 • YART 201 L01 LEC1
- CSI CRIME SCENE INVESTIGATOR 1 to 5 p.m. • \$75 • AGES 6-10 • YSCIE 156 L01 LEC1
- JUST BEAD IT 1 to 5 p.m. • \$75 • AGES 6-10 • YART 101 L01 LEC1

June 16-20, 2014

- FABULOUS FUN FIESTA 8:30 a.m. to 12:30 p.m. • \$75 • AGES 6-10 • YSPAN 100 L01 LEC1
- HOCUS POCUS: PERFORMING MAGIC CAMP 8:30 a.m. to 12:30 p.m. • \$75 • AGES 6-10 • YPERS 222 L01 LEC1
- MAGICAL WIZARD CAMP 1 to 5 p.m. • \$75 • AGES 6-10 • YSCIE 152 L01 LEC1
- CATCH A SHOOTING STAR CAMP 1 to 5 p.m. • \$75 • AGES 6-10 • YSCIE 205 L01 LEC1
- BEGINNING LINE DANCING 1 to 5 p.m. • \$75 • AGES 10-12 • YMUSC 203 L01 LEC1

June 23-27, 2014

- THE GLEE CLUB 8:30 a.m. to 12:30 p.m. • \$75 • AGES 6-10 • YMUSC 204 L01 LEC1
- JURASIC DINOSAUR ADVENTURE CAMP 8:30 a.m. to 12:30 p.m. • \$75 • AGES 6-10 • YSCIE 150 L01 LEC1
- STREET HIP HOP 1 to 5 p.m. • \$75 • AGES 6-10 • YMUSC 244 L01 LEC1
- SUGARY CHEF 1 to 5 p.m. • \$75 • AGES 6-10 • YSCIE 200 L01 LEC1

July 7-11, 2014

- AROUND THE WORLD IN FIVE DAYS 8:30 a.m. to 12:30 p.m. • \$75 • AGES 6-10 • YHIST 101 L01 LEC1
- CANDY CHEMISTRY CAMP 8:30 a.m. to 12:30 p.m. • \$75 • AGES 6-10 • YSCIE 158 L01 LEC1
- IT'S ALL ABOUT ME, ME, ME! 1 to 5 p.m. • \$75 • AGES 6-10 • YART 230 L01 LEC1
- DRAMA WORKSHOP 1 to 5 p.m. • \$75 • AGES 6-10 • YTHEA 144 L01 LEC1
- JUNIOR ARCHITECTURE 1 to 5 p.m. • \$75 • AGES 10-12 • YMATH 101 L01 LEC1

July 14-18, 2014

- MATH MANIA 8:30 a.m. to 12:30 p.m. • \$75 • AGES 6-10 • YMATH 706 L01 LEC1
- GUTS, GOOP, GLOBS AND GAS 8:30 a.m. to 12:30 p.m. • \$75 • AGES 6-10 • YSCIE 188 L01 LEC1
- PHOTOGRAPHY FOR KIDS 8:30 a.m. to 12:30 p.m. • \$75 • AGES 6-10 • YPHO 301 L01 LEC1
- COASTAL PIRATE SPLASH 1 to 5 p.m. • \$75 • AGES 6-10 • YPERS 151 L01 LEC1
- INCREDIBLE EDIBLE ART 1 to 5 p.m. • \$75 • AGES 6-10 • YART 205 L01 LEC1
- MOTION, MOVE AND MANEUVER 1 to 5 p.m. • \$75 • AGES 10-12 • YPERS 100 L01 LEC1

July 21-25, 2014

- STREET HIP HOP 8:30 a.m. to 12:30 p.m. • \$75 • AGES 6-10 • YMUSC 244 L02 LEC1
- S.C. SEASHELL CRAFTS 8:30 a.m. to 12:30 p.m. • \$75 • AGES 6-10 • YART 400 L01 LEC1
- ARTISTIC SANDTASTIC BEACH PARTY 1 to 5 p.m. • \$75 • AGES 6-10 • YART 222 L01 LEC1
- MARDI GRAS IN JULY: FUN MASK-MAKING AND MORE! 1 to 5 p.m. • \$75 • AGES 6-10 • YART 303 L01 LEC1
- EXPRESS YOURSELF/HANDS-ON CAMP 1 to 5 p.m. • \$75 • AGES 10-12 • YART 110 L01 LEC1

July 28-August 1, 2014

- CONFIDENT, CREATIVE ME! 8:30 a.m. to 12:30 p.m. • \$75 • AGES 6-10 • YPERS 205 L01 LEC1
- BEGINNING LINE DANCING 8:30 a.m. to 12:30 p.m. • \$75 • AGES 6-10 • YMUSC 203 L02 LEC1
- THE GLEE CLUB 1 to 5 p.m. • \$75 • AGES 6-10 • YMUSC 204 L02 LEC1
- SHAKE, EXPLODE, RUMBLE! 1 to 5 p.m. • \$75 • AGES 6-10 • YSCIE 202 L01 LEC1

August 4-8, 2014

- CALLING ALL SUPERHEROES! POW! ZAP! BAM! 8:30 a.m. to 12:30 p.m. • \$75 • AGES 6-10 • YPERS 150 L01 LEC1
- ENERGIZING EXPERIMENTS 8:30 a.m. to 12:30 p.m. • \$75 • AGES 6-10 • YSCIE 201 L01 LEC1
- SLEUTH ACADEMY 1 to 5 p.m. • \$75 • AGES 6-10 • YSCIE 157 L01 LEC1
- MAGNIFICENT MUSICAL THEATER 1 to 5 p.m. • \$75 • AGES 6-10 • YMUSC 202 L01 LEC1

Enjoy the fun of summer camp at Coastal Carolina University's **2014**



COASTAL CAROLINA KIDS CAMP!

South Strand Litchfield Education Center
14427 Ocean Highway, Litchfield Landing, Pawleys Island, SC 29585

**REGISTRATION
MADE EASY:**

Registration is complete when payment and course registration are received by Coastal Carolina University. Payment is required to reserve any space or registration for a class. Class sizes are limited; early registration is advised.

BY MAIL: Select classes you want to attend and mail the completed registration form with payment to Coastal Carolina University, Division of Academic Outreach, P.O. Box 1409, Pawleys Island, SC 29585.

BY TELEPHONE: Call 843-349-6584, 843-234-3424 or 843-349-2767 Monday through Friday between 8:30 a.m. and 5 p.m. with credit card information.

IN PERSON: Stop by the Litchfield Education Center at 14427 Ocean Highway, Litchfield Landing, in Pawleys Island, with registration information and payment. On-site registration will be accepted Monday through Friday, 8:30 a.m. to 5 p.m.

ONLINE: Complete the online registration and make payment with Visa, MasterCard, Discover or American Express. A 2.7 percent service fee is applicable for payments made with credit or debit cards.

LUNCH: If your child attends a full-day camp or is registered for both morning and afternoon camps, they'll need to bring a bag lunch. Adult supervision is provided during the lunch period. Students are encouraged to bring snacks or change for the vending machines each day.

LATE PICK UP FEE: A late charge of \$5 will be applied for each five (5) minutes after 5 p.m. This charge is due upon arrival.

CHECK IN: To expedite the weekly check-in process the first day of camp, please visit our website to download all necessary forms prior to check-in. coastal.edu/outreach

FEES: Half-day classes: \$75 per class • Full-day classes: \$150 per class

REFUNDS: Refunds will be made if withdrawal from a class is received in writing at least three working days prior to the start of the class. Failure to attend a class without notification or cancellation will not entitle a refund. In the event that a class is cancelled by Academic Outreach, a full refund will be made to the participant. Refunds take approximately two weeks to process.

FOR MORE INFORMATION:

Sponsored by Coastal Carolina University's Division of Academic Outreach

Visit our website at coastal.edu/outreach or call Academic Outreach at 843-349-6584, 843-234-3424 or 843-349-2767.

REGISTRATION FORM • 2014 COASTAL CAROLINA KIDS CAMP

Student's name _____

Date of birth _____ School _____

Mailing address _____

City _____ State _____ Zip code _____

Name of parent/guardian _____

Telephones: Day (_____) _____ Cell: (_____) _____

Email address _____

IN CASE OF AN EMERGENCY: Name _____

Relationship _____ Telephone: (_____) _____

Total number of courses _____ Amount paid: \$ _____

PAYMENT INFORMATION (check one): PERSONAL CHECK *Checks should be payable to Coastal Carolina University*
 CREDIT CARD: Visa MasterCard Discover American Express
A 2.7 percent service fee is applicable for payments made with credit or debit cards.

Name of cardholder _____

Credit card number _____ Expiration date _____ Security code _____

Signature of cardholder _____