





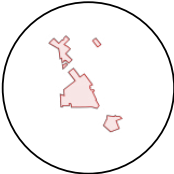



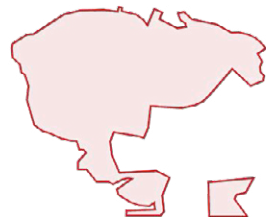
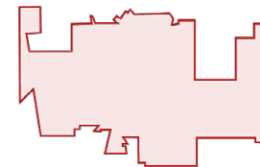
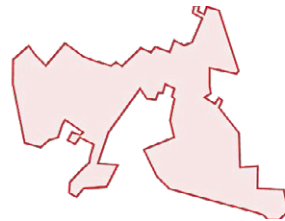
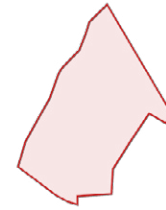
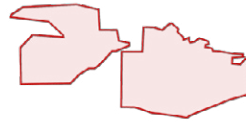
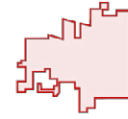
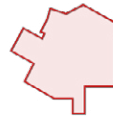
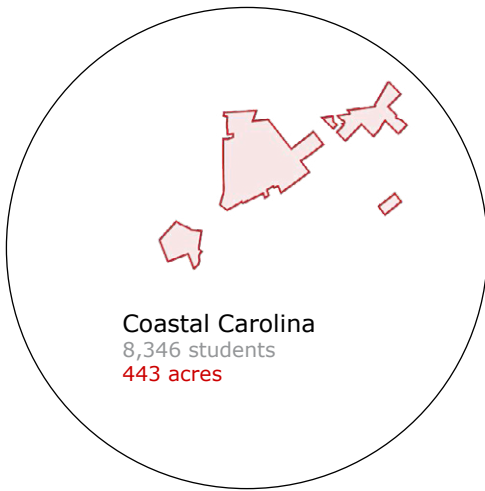


Attachment 1: Coastal Carolina University Scale Comparisons

The following same-scale comparisons juxtapose the Coastal Carolina University campus with peer institutions as well as “aspirational” institutions. Comparative institutions were selected based upon their geographic context, physical characteristics, and student populations for consistency with CCU’s planned growth and long term growth potential.

	Clemson University 19,111 students	1,400 acres
	Mississippi State U. 18,601 students	1,214 acres (4,200)
	University of Virginia 20,895 students	1,129 acres (1,682)
	University of Mississippi 15,932 students	756 acres (1,000)
	Georgia Southern 19,086 students	700 acres
	U. of West Georgia 11,500 students	644 acres
	Coastal Carolina 8,346 students	443 acres
	UNC Wilmington 12,413 students	422 acres (661)
	U. of S. Mississippi 15,293 students	334 acres (1,086)
	University of Akron 27,911 students	331 acres (218)



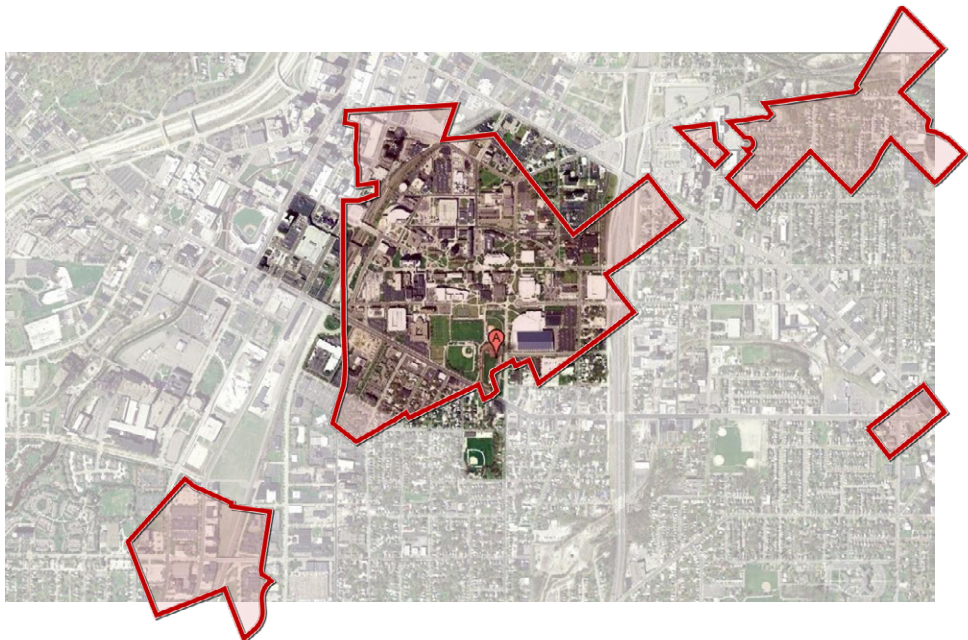
Coastal Carolina

8,346 students
443 acres



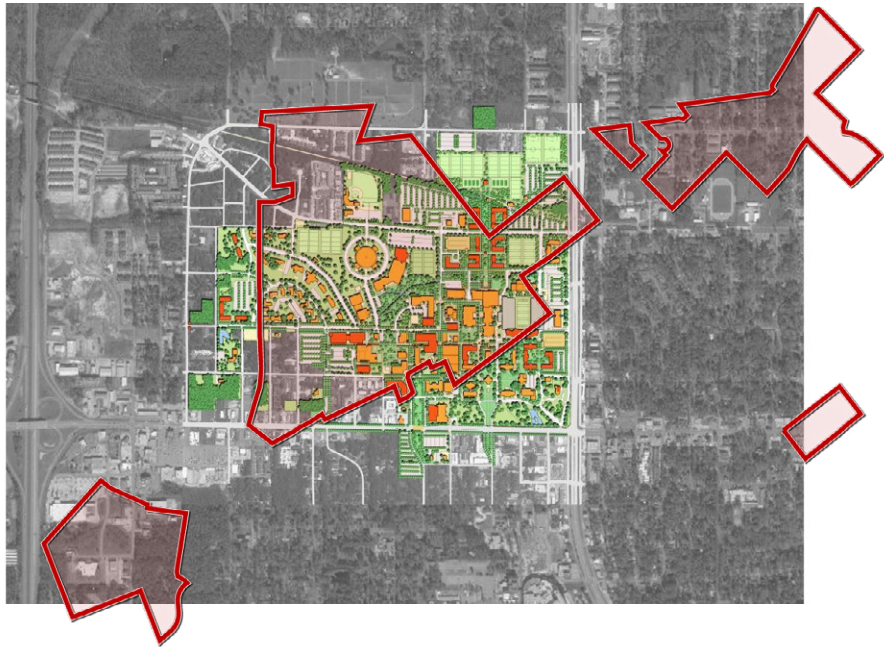
University of Akron

Akron, OH
27,911 students
331 acres (218)



University of Southern Mississippi

Hattiesburg, MS
15,293 students
334 acres (1,086)



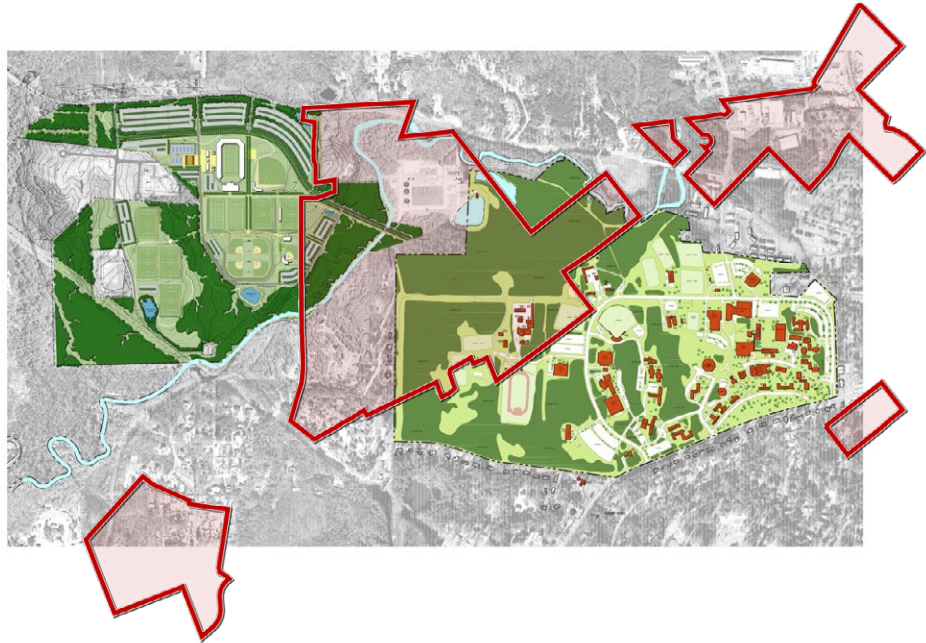
University of North Carolina Wilmington

12,413 students
422 acres (661)



University of West Georgia

Carrollton, GA
11,500 students
644 acres



Georgia Southern

Statesboro, GA
19,086 students
700 acres



University of Mississippi

Oxford, MS
15,932 students
756 acres (1,000)



University of Virginia

Charlottesville, VA
20,895 students
1,129 acres (1,682)



Clemson University

Clemson, SC
19,111 students
1,400 acres

