

Coastal Carolina University

Fact Book

Office of Institutional Research, Assessment and Analysis



Fall 2010

COASTAL CAROLINA UNIVERSITY

OFFICE OF INSTITUTIONAL RESEARCH, ASSESSMENT AND ANALYSIS

FACT BOOK

FALL 2010

The mission of the Office of Institutional Research, Assessment and Analysis is to provide a centralized source for data collection, data analysis, data archives, and data management activities, and to provide support for assessment activities that inform and strengthen Coastal Carolina University's strategic planning process. In line with the goal of informing the strategic planning process, the *Fact Book* is published annually to provide relevant information to the university community. Furthermore, the *Fact Book* provides metrics and benchmarks to show the University's progression towards the Strategic Plan. Items which meet these progression goals are noted in the highlights portion of each section.

The *Fact Book* meets the following requirements of the SACS Commission on Colleges, *Principles of Accreditation: Foundations for Quality Enhancement* (SACS 2010).

Core Requirement 2.5: The institution engages in ongoing, integrated, and institution-wide research-based planning and evaluation processes that (1) incorporate a systematic review of institutional mission, goals, and outcomes; (2) result in continuing improvement in institutional quality; and (3) demonstrate the institution is effectively accomplishing its mission. (Institutional Effectiveness)

Comprehensive Standard 3.3.1: The institution identifies expected outcomes, assesses the extent to which it achieves these outcomes, and provides evidence of improvement based on analysis of the results in each of the following area: (Institutional Effectiveness)

- 3.3.1.1 educational programs, to include student learning outcomes
- 3.3.1.2 administrative support services
- 3.3.1.3 educational support services
- 3.3.1.4 research within its educational mission, if appropriate
- 3.3.1.5 community/public service within its educational mission, if appropriate

TABLE OF CONTENTS

ENROLLMENT

Enrollment Highlights.....	3
Summer Enrollment Trends.....	5
Fall and Spring Enrollment Trends	6
Fall Enrollment Trends by Race	7
Fall Enrollment Trends by Gender and Full-time/Part-time Status	8
Fall Enrollment Trends by Level	9
Fall Enrollment Trends by Level and Full-time/Part-time Status.....	10
Residency Classification of Students for Fee Payment Purposes.....	11
Geographic Distribution by South Carolina Counties	12
Geographic Distribution by State or Country	13

FIRST-TIME STUDENTS

First-time Students Highlights.....	17
New Student Orientation Attendance	19
Applications, Acceptances, and Enrollments.....	20
New Freshmen, SAT and ACT Scores.....	21
New Freshmen, High School Grade Point Average	22
New Freshmen, High School Course Pre-requisites	23
New Freshmen Retention	24
First-time Full-time Freshmen One Year Retention.....	25
Profile of First-time Full-time Freshmen.....	29

FIRST-TIME TRANSFER STUDENTS

First-time Transfer Students Highlights	35
Migration of Transfer Students to Coastal Carolina.....	37
Migration of Transfer Students from Coastal Carolina.....	38
New Transfer Student Retention	39
First-time Full-time Transfer Students One Year Retention.....	40
Profile of First-time Full-time Transfer Students	43

ACADEMICS

Academic Highlights	49
Undergraduate Major by Class	51
Undergraduate Enrollment by Major	52
Graduate Enrollment by Major	53
Undergraduate Major by Average Age	54
Average Size of Lecture Classes by Discipline and Level	55
Average Grade Point Ratio by Class	56
Grade Distribution by Discipline	58
Credit Hour Production and FTE Production by Discipline, Fall 2009	60
Credit Hour Production and FTE Production by Discipline, Fall 2010	61
Trends in Student/Faculty Ratio	62
Total Undergraduate Degrees Awarded by Major	63
Total Graduate Degrees Awarded by Major	64
Total Degrees Awarded	65

FACULTY

Faculty Highlights	69
Summary of Employees Holding Faculty Rank	71
Faculty Profile by College	72
Faculty Profile by Academic Discipline, Fall 2009	74
Faculty Profile by Academic Discipline, Fall 2010	75
Profile of Full-time Teaching Faculty by Rank	76
Rank and Degree of Full-time Employees Holding Faculty Rank	77
Full-time Faculty by College and Rank	78
FTE Teaching Faculty by College and Rank	79
Full-time Faculty Nine-Month Salary Trends	80
Full-time Faculty Average Salary Comparison by Rank	81
Student Credit Hours Taught by Full-time Faculty	82
Student Credit Hours Taught by FTE Faculty	83

RESOURCES

Resources Highlights	87
Annual Tuition and Residence Hall Fees	89
S.C. Public Institutions Academic Year Costs Tuition and Required Fees, 2010-11 Academic Year Comparison of In-State to Out-of-State	90
Total Financial Aid Received by Coastal Students from All Sources	92
Buildings Inventory	94

Enrollment

Coastal Carolina University

Fact Book

Office of Institutional Research, Assessment and Analysis

Fall 2010



ENROLLMENT

TABLE OF CONTENTS

Enrollment Highlights	3
Summer Enrollment Trends	5
Fall and Spring Enrollment Trends.....	6
Fall Enrollment Trends by Race.....	7
Fall Enrollment Trends by Gender and Full-time/Part-time Status.....	8
Fall Enrollment Trends by Level.....	9
Fall Enrollment Trends by Level and Full-time/Part-time Status	10
Residency Classification of Students for Fee Payment Purposes	11
Geographic Distribution by South Carolina Counties.....	12
Geographic Distribution by State or Country.....	13

ENROLLMENT HIGHLIGHTS

Fact Book, 2010

Enrollment – Fall 2010

- Total enrollment was 8,706. This is an increase of 346 (4%) from the previous fall semester. Fall 2010 FTE increased 6% to 8,302 during the same period.
- Total undergraduate enrollment was 8,203, which is an increase of 283 (4%) students from the previous fall semester.
- Undergraduate degree and non-degree-seeking students made up 94% of total Fall 2010 enrollment, while 6% of the total Fall 2010 enrollment was graduate degree and non-degree-seeking students. The number of graduate degree-seeking students has increased 108% since Fall 2006.
- Since 1997, the number of students attending May, Summer I, and Summer II semesters has grown from 2,265 to 3,775 (67%). In the same period the number of hours taken increased from 8,469 to 14,866 (76%). This growth represents a 0.20% increase in the number of hours taken per student.

Demographics – Fall 2010

- Females made up 54% of the total undergraduate enrollment and 73% of total graduate enrollment for Fall 2010.
- In Fall 2010, 92% of total undergraduate students were enrolled full-time.
- Fifty-four (54%) of total students enrolled are from the state of South Carolina, with the remaining students from out-of-state or international origins. The largest proportion of out-of-state students enrolled at Coastal Carolina University are from the states of New Jersey (8%), New York (7%) and Maryland (6%). International student enrollment accounted for 106 students.

- In Fall 2010, students enrolled at Coastal Carolina University from all counties in South Carolina. Students from Horry County represented the largest number of enrollees at 2,142 (46%) followed by Georgetown (7%), Richland (7%) and Greenville (4%) counties.
- The most prominent ethnic groups represented at Coastal Carolina University in Fall 2010 was White/non-Hispanic (75%) and Black/African American (18%) of the total enrollment.

Strategic Plan Alignment

Strategy 4: Ensuring financial viability and managed growth

In line with the University's five-year enrollment plan Coastal Carolina University exceeded its forecasted enrollment by 37 students in Fall 2010.



SUMMER ENROLLMENT TRENDS 1997-2010

Year	May Semester		Summer I Semester		Summer II Semester		Total	
	# Students	# Hours	# Students	# Hours	# Students	# Hours	# Students	# Hours
1997	379	1,187	1,062	4,153	824	3,129	2,265	8,469
1998	426	1,485	1,246	5,134	857	3,437	2,529	10,056
1999	405	1,354	1,290	5,379	1,024	3,990	2,719	10,723
2000	500	1,783	1,386	5,804	1,098	4,311	2,984	11,898
2001	567	2,131	1,802	7,271	1,632	6,015	4,001	15,417
2002	653	2,377	1,993	7,194	1,233	4,333	3,879	13,904
2003	765	2,787	1,650	6,606	897	3,643	3,312	13,036
2004	748	2,632	1,607	6,626	992	3,958	3,347	13,216
2005	687	2,368	1,530	6,093	1,026	4,345	3,243	12,806
2006	617	2,185	1,596	6,428	1,126	4,443	3,339	13,056
2007	714	2,459	1,565	6,061	1,103	4,213	3,382	12,733
2008	686	2,505	1,360	5,334	1,075	4,118	3,121	11,957
2009	682	2,619	1,370	5,498	996	3,884	3,048	12,001
2010	819	3,132	1,801	7,147	1,155	4,587	3,775	14,866

FALL AND SPRING ENROLLMENT TRENDS 1989-2010

FALL SEMESTER			SPRING SEMESTER		
Term	Headcount	FTE	Term	Headcount	FTE
1989	4,101	3,301	1990	3,696	2,898
1990	4,080	3,396	1991	3,562	2,875
1991	3,983	3,340	1992	3,488	2,849
1992	4,023	3,455	1993	3,558	2,946
1993	* 4,453	3,610	1994	* 3,771	3,043
1994	4,542	3,646	1995	3,976	3,150
1995	4,468	3,656	1996	3,849	3,303
1996	4,477	3,793	1997	4,036	3,352
1997	4,408	3,874	1998	3,999	3,565
1998	4,556	3,938	1999	4,150	3,650
1999	4,615	3,991	2000	4,163	3,635
2000	4,653	4,101	2001	4,529	3,908
2001	4,965	4,487	2002	4,853	4,280
2002	5,980	5,095	2003	5,597	4,841
2003	6,780	5,795	2004	5,998	5,302
2004	7,021	6,141	2005	6,222	5,562
2005	7,613	6,576	2006	6,571	5,828
2006	8,049	6,944	2007	6,854	6,173
2007	7,872	7,177	2008	7,007	6,429
2008	8,154	7,610	2009	7,417	6,800
2009	8,360	7,865	2010	7,760	7,200
2010	8,706	8,302			

* Date of official counts changed to Oct. 30 for Fall and March 30 for Spring
Strategic Plan Alignment

**FALL ENROLLMENT TRENDS
BY RACE
2005-2010**

UNDERGRADUATE

	<u>FALL 2005</u>	<u>FALL 2006</u>	<u>FALL 2007</u>	<u>FALL 2008</u>	<u>FALL 2009</u>	<u>FALL 2010</u>	<u>5-YEAR % CHANGE</u>
<u>ETHNICITY</u>							
Hispanic/Latino	98	100	115	144	219	257	162.2%
<u>RACE</u>							
American Indian/Alaskan Native	34	30	34	43	40	28	-17.6%
Asian	70	79	93	98	77	64	-8.6%
Black/African American	743	789	824	970	1,168	1,452	95.4%
Native Hawaiian/Pacific Islander	---	---	---	---	6	11	N/A
White	5,240	5,477	5,828	6,160	6,171	6,124	16.9%
Two or More Races	---	---	---	---	92	147	N/A
Non-Resident Alien	128	109	92	78	102	97	-24.2%
Unknown	84	76	84	80	45	23	-72.6%
TOTAL	6,397	6,660	7,070	7,573	7,920	8,203	28.2%

GRADUATE

	<u>FALL 2005</u>	<u>FALL 2006</u>	<u>FALL 2007</u>	<u>FALL 2008</u>	<u>FALL 2009</u>	<u>FALL 2010</u>	<u>5-YEAR % CHANGE</u>
<u>ETHNICITY</u>							
Hispanic	9	13	4	8	2	2	-77.8%
<u>RACE</u>							
American Indian/Alaskan Native	3	4	2	1	1	3	0.0%
Asian	9	6	10	2	4	1	-88.9%
Black/African American	239	361	129	58	47	52	-78.2%
Native Hawaiian/Pacific Islander	---	---	---	---	1	1	N/A
White, non-Hispanic	949	961	649	505	370	427	-55.0%
Two or More Races	---	---	---	---	1	3	N/A
Non-Resident Alien	1	2	4	5	7	12	1100.0%
Unknown	6	42	4	2	7	2	-66.7%
TOTAL	1,216	1,389	802	581	440	503	-58.6%

Note: Institutions required to use new IPEDS racial/ethnic categories for reporting.

**FALL ENROLLMENT TRENDS
BY GENDER AND FULL-TIME/PART-TIME STATUS
2006-2010**

UNDERGRADUATE

	Male		Female		Total
	#	%	#	%	
Fall 2006					
Full-time	2,856	42.9%	3,148	47.3%	6,004
Part-time	287	4.3%	369	5.5%	656
Total	3,143	47.2%	3,517	52.8%	6,660
Fall 2007					
Full-time	3,057	43.2%	3,395	48.0%	6,452
Part-time	279	3.9%	339	4.8%	618
Total	3,336	47.2%	3,734	52.8%	7,070
Fall 2008					
Full-time	3,281	43.3%	3,602	47.6%	6,883
Part-time	284	3.8%	406	5.4%	690
Total	3,565	47.1%	4,008	52.9%	7,573
Fall 2009					
Full-time	3,342	42.2%	3,796	47.9%	7,138
Part-time	358	4.5%	424	5.4%	782
Total	3,700	46.7%	4,220	53.3%	7,920
Fall 2010					
Full-time	3,520	42.9%	4,019	49.0%	7,539
Part-time	296	3.6%	368	4.5%	664
Total	3,816	46.5%	4,387	53.5%	8,203

GRADUATE

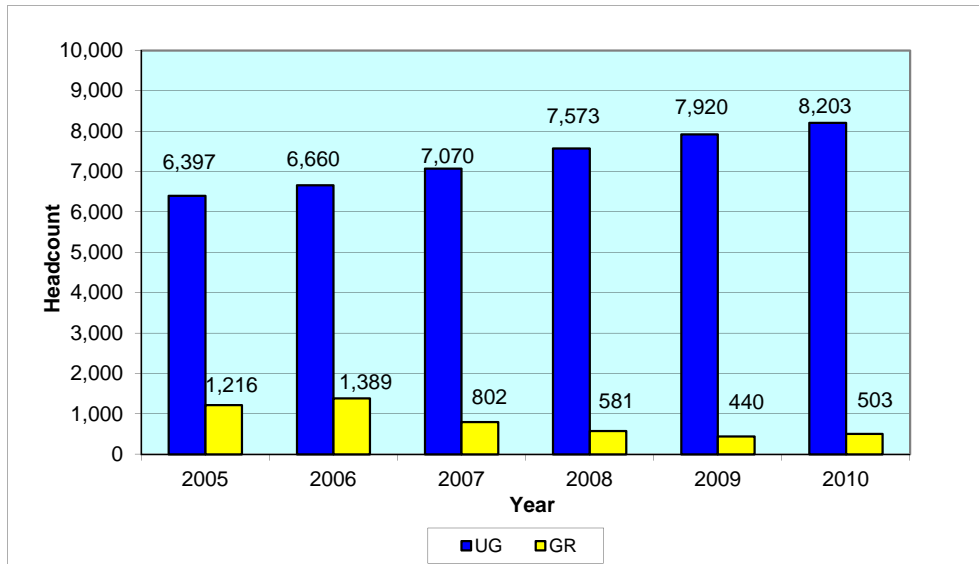
	Male		Female		Total
	#	%	#	%	
Fall 2006					
Full-time	45	3.2%	88	6.3%	133
Part-time	178	12.8%	1,078	77.6%	1,256
Total	223	16.1%	1,166	83.9%	1,389
Fall 2007					
Full-time	34	4.2%	36	4.5%	70
Part-time	105	13.1%	627	78.2%	732
Total	139	17.3%	663	82.7%	802
Fall 2008					
Full-time	44	7.6%	60	10.3%	104
Part-time	105	18.1%	372	64.0%	477
Total	149	25.6%	432	74.4%	581
Fall 2009					
Full-time	49	11.1%	67	15.2%	116
Part-time	79	18.0%	245	55.7%	324
Total	128	29.1%	312	70.9%	440
Fall 2010					
Full-time	51	10.1%	77	15.3%	128
Part-time	83	16.5%	292	58.1%	375
Total	134	26.6%	369	73.4%	503

**FALL ENROLLMENT TRENDS
BY LEVEL
2006-2010**

	Fall 2006	Fall 2007	Fall 2008	Fall 2009	Fall 2010
Undergraduate Degree Seeking					
New Freshman	1,474	1,652	1,655	1,775	2,006
New Transfers	615	658	721	754	840
Other Freshman	437	414	427	469	485
Sophomore	1,227	1,346	1,468	1,375	1,387
Junior	1,148	1,265	1,388	1,433	1,469
Senior	1,533	1,516	1,663	1,738	1,787
Total	6,434	6,851	7,322	7,544	7,974
Undergraduate Non-Degree Seeking	226	219	251	376	229
Total Undergraduate	6,660	7,070	7,573	7,920	8,203
Graduate Degree Seeking	159	181	231	294	331
Graduate Non-Degree Seeking	1,230	621	350	146	172
Total Graduate	1,389	802	581	440	503
Total Enrollment	8,049	7,872	8,154	8,360	8,706

**FALL ENROLLMENT TRENDS BY LEVEL AND FULL-TIME / PART-TIME STATUS
FALL 2005 - FALL 2010**

	Fall 2005	Fall 2006	2005-06	Fall 2007	2006-07	Fall 2008	2007-08	Fall 2009	2008-09	Fall 2010	2009-10
	Enrolled	Enrolled	% Change	Enrolled	% Change	Enrolled	% Change	Enrolled	% Change	Enrolled	% Change
<u>Undergraduate</u>											
Full-Time	5,753	6,004	4.36%	6,452	7.46%	6,883	6.68%	7,138	3.70%	7,539	5.62%
Part-time	644	656	1.86%	618	-5.79%	690	11.65%	782	13.33%	664	-15.09%
Undergraduate Totals	6,397	6,660	4.11%	7,070	6.16%	7,573	7.11%	7,920	4.58%	8,203	3.57%
<u>Graduate</u>											
Full-Time	105	133	26.67%	70	-47.37%	104	48.57%	116	11.54%	128	10.34%
Part-time	1,111	1,256	13.05%	732	-41.72%	477	-34.84%	324	-32.08%	375	15.74%
Graduate Totals	1,216	1,389	14.23%	802	-42.26%	581	-27.56%	440	-24.27%	503	14.32%
<u>New Students</u>											
Freshman	1,498	1,474	-1.60%	1,652	12.08%	1,655	0.18%	1,775	7.25%	2,006	13.01%
Transfer	589	615	4.41%	658	6.99%	721	9.57%	754	4.58%	840	11.41%
Graduate	79	118	49.37%	83	-29.66%	115	38.55%	186	61.74%	153	-17.74%
New Student Totals	2,166	2,207	1.89%	2,393	8.43%	2,491	4.10%	2,715	8.99%	2,999	10.46%
Grand Totals	7,613	8,049	5.73%	7,872	-2.20%	8,154	3.58%	8,360	2.53%	8,706	4.14%



**RESIDENCY CLASSIFICATION OF STUDENTS
FOR FEE PAYMENT PURPOSES*
2006-2010**

	In-State	%	Out-of-State	%	Total
2006					
Undergraduate	4,623	57.4%	2,037	25.3%	6,660
Graduate	1,361	16.9%	28	0.3%	1,389
Total	5,984	74.3%	2,065	25.7%	8,049
2007					
Undergraduate	4,825	61.3%	2,245	28.5%	7,070
Graduate	774	9.8%	28	0.4%	802
Total	5,599	71.1%	2,273	28.9%	7,872
2008					
Undergraduate	5,147	63.1%	2,426	29.8%	7,573
Graduate	549	6.7%	32	0.4%	581
Total	5,696	69.9%	2,458	30.1%	8,154
2009					
Undergraduate	5,365	64.2%	2,555	30.6%	7,920
Graduate	355	4.2%	85	1.0%	440
Total	5,720	68.4%	2,640	31.6%	8,360
2010					
Undergraduate	5,796	66.6%	2,407	27.6%	8,203
Graduate	469	5.4%	34	0.4%	503
Total	6,265	72.0%	2,441	28.0%	8,706

* Residency classification for fee payment purposes is defined by South Carolina statute.



GEOGRAPHIC DISTRIBUTION FALL 2010

**GEOGRAPHIC DISTRIBUTION OF
UNDERGRADUATE AND GRADUATE ENROLLMENT
BY STATE OR COUNTRY
FALL 2010**



Alabama	11	Nevada	2	Albania	3	Lithuania	1
Arizona	4	New Hampshire	62	Australia	1	Macedonia	1
Arkansas	5	New Jersey	696	Belize	1	Mexico	3
California	22	New Mexico	2	Bolivia	1	Netherlands	1
Colorado	11	New York	588	Brazil	3	New Zealand	1
Connecticut	192	North Carolina	177	Bulgaria	1	Nigeria	2
Delaware	62	North Dakota	2	Cameroon	2	Norway	1
Florida	40	Ohio	177	Canada	9	Peru	3
Georgia	67	Oklahoma	5	Chile	1	Poland	2
Illinois	47	Pennsylvania	375	China	3	Romania	1
Indiana	35	Puerto Rico	1	Colombia	4	Russia	10
Iowa	4	Rhode Island	32	Croatia	1	South Africa	1
Kansas	9	South Carolina	4663	Ecuador	3	Spain	2
Kentucky	41	South Dakota	2	Ethiopia	1	Sweden	2
Louisiana	3	Tennessee	32	France	2	Thailand	1
Maine	19	Texas	18	Germany	10	Trinidad & Tobago	1
Maryland	500	US Armed Forces - Europe	2	Greece	1	United Kingdom	11
Massachusetts	224	Utah	2	Haiti	1	Uzbekistan	1
Michigan	23	Vermont	33	Iceland	1	Vietnam	3
Minnesota	5	Virginia	316	India	4		
Mississippi	1	Washington	8	Jamaica	3	In-State	4,663
Missouri	9	West Virginia	42	Japan	3	Out-of-State	3,934
Montana	2	Wisconsin	21	Latvia	1	International	109
Nebraska	1	Wyoming	2	Lebanon	1	Total	8,706

First-time Students

Coastal Carolina University

Fact Book

Office of Institutional Research, Assessment and Analysis

Fall 2010



FIRST-TIME STUDENTS

TABLE OF CONTENTS

First-time Students Highlights	17
New Student Orientation Attendance.....	19
Applications, Acceptances, and Enrollments	20
New Freshmen, SAT and ACT Scores	21
New Freshmen, High School Grade Point Average.....	22
New Freshmen, High School Course Pre-requisites.....	23
New Freshmen Retention	24
First-time Full-time Freshmen One Year Retention.....	25
Profile of First-Time Full-Time Freshmen.....	29

FIRST-TIME STUDENTS HIGHLIGHTS

Fact Book, 2010

Enrollment and academic trends for first-time students show the following:

- Applications from new undergraduate students increased by 53% between Fall 2006 and Fall 2010. New students who were accepted to the University increased by 62% between Fall 2006 and Fall 2010. New students who enrolled increased by 21% between Fall 2006 and Fall 2010. In Fall 2010, 33% of accepted applicants enrolled at Coastal Carolina University.
- Between Fall 2006 and Fall 2010, the average SAT score among Coastal Carolina University freshmen (1008) decreased by 39 points yet still exceeded the average scores for high school students in South Carolina (979). The average ACT composite score for Coastal Carolina University freshmen (20) was one point less than that of the nation (21) and was on par with that of the state-wide average (20) for the Fall 2010 cohort. (*The writing test is not included in total SAT scores*)
- The average high school GPA for Coastal Carolina University freshmen increased from 3.32 for the Fall 2006 cohort to 3.34 for the Fall 2010 cohort. The Fall 2010 freshmen cohort high school GPA is higher (3.34) than the previously admitted Fall 2009 freshmen cohort (3.31).
- The freshman profile for the Fall 2006 through Fall 2010 cohorts indicates that the number of first-time students who apply, are accepted, and enroll at Coastal Carolina University has continued to grow. In Fall 2010 there were 2,006 new freshmen which shows an increase of 13% from Fall 2009.
- There were a total of 1,769 first-time full-time freshmen students enrolled at Coastal Carolina University in the Fall of 2009. Of the 2009 freshmen cohort, 1,141 students chose to continue their studies the following year at Coastal Carolina University. The one year retention for the 2009 cohort is 65% which is lower than the one year retention for the Fall 2008 cohort (66%).
- In geographic origin, 530 (46%) of continuing students were native to South Carolina and 611 (54%) consisted of students from other U.S. states and international students.
- Among the academic colleges, the continuation of first-time full-time freshmen students for this period is as follows: Wall College of Business Administration (69%), Spadoni College of Education (67%), Edwards College of Humanities and Fine Arts (70%), College of Science (63%) and University College (57%).

Demographics - First-Time Full-Time Freshmen - Fall 2010

- The most prominent ethnic groups among the Fall 2010 first-time full-time freshmen were White (72%), Black/African Americans (20%) and Hispanic/Latinos (4%).
- Females outnumbered males in the Fall 2010 full-time first-time freshmen group making up 54% of the total.
- In Fall 2010 first-time full-time freshmen consisted mostly of students under the age of 20 at 99%.
- Seventeen percent (17%) of the first-time full-time freshmen at Coastal Carolina University originated from the immediate five-county service area of Dillon, Georgetown, Horry, Marion, and Williamsburg counties. Approximately 30% originated from other South Carolina counties.
- Approximately 71% of first-time full-time freshmen during Fall 2010 reported high school grade point averages (GPA) equal or exceeding 3.00. Thirty-two percent (32%) indicated a high school GPA that fell between 3.00 and 3.49, while 39% reported a GPA of 3.50 or higher.
- For the full-time first-time freshmen during Fall 2010 approximately 13% had not declared a major. The most popular undergraduate majors at Coastal Carolina University among first-time freshmen included: Marine Science (11%), Biology (10%), Management (7%) and Psychology (6%).

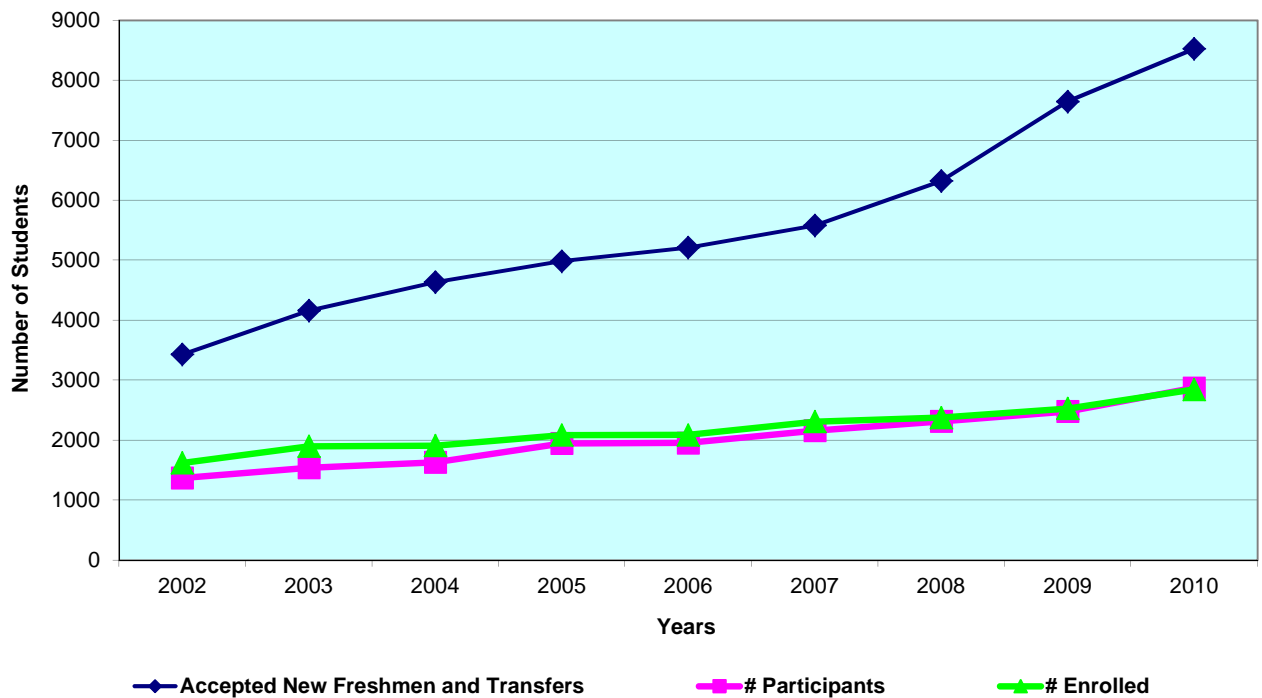
Strategic Plan Alignment

Strategy 4: Ensuring financial viability and managed growth

Coastal Carolina University's five-year enrollment plan projected 1,825 new freshmen in Fall 2010, actual enrollment was 2,006 new freshmen.

NEW STUDENT ORIENTATION ATTENDANCE SUMMER 2002-2010

YEAR	TOTAL ACCEPTED NEW FRESHMEN AND TRANSFERS	# FRESHMEN & TRANSFERS ATTENDED ORIENTATION	% FRESHMEN & TRANSFERS ATTENDED ORIENTATION	# NEW FRESHMEN & TRANSFERS ENROLLED	% ENROLLED OF ACCEPTED
2002	3,431	1,371	40.0%	1,623	47.3%
2003	4,161	1,542	37.1%	1,898	45.6%
2004	4,636	1,632	35.2%	1,910	41.2%
2005	4,984	1,948	39.1%	2,087	41.9%
2006	5,212	1,956	37.5%	2,089	40.1%
2007	5,580	2,161	38.7%	2,310	41.4%
2008	6,321	2,316	36.6%	2,376	37.6%
2009	7,646	2,480	32.4%	2,529	33.1%
2010	8,525	2,873	33.7%	2,846	33.4%



**APPLICATIONS, ACCEPTANCES, AND ENROLLMENTS
FALL ADMISSION 2006-2010
UNDERGRADUATE**

	2006	2007	2008	2009	2010
APPLICATIONS RECEIVED					
Freshmen	6,218	6,618	7,514	8,706	9,639
Transfer	1,384	1,490	1,631	1,752	2,020
Other	496	490	509	562	748
TOTAL	8,098	8,598	9,654	11,020	12,407
ACCEPTED FOR ADMISSION					
Freshmen	4,238	4,524	5,215	6,438	7,170
Transfer	974	1,056	1,106	1,208	1,355
Other	484	437	487	514	676
TOTAL	5,696	6,017	6,808	8,160	9,201
DENIED ADMISSION					
Freshmen	1,350	1,352	2,014	1,618	1,657
Transfer	134	178	227	185	334
Other	0	1	5	13	5
TOTAL	1,484	1,531	2,246	1,816	1,996
ENROLLED					
Freshmen	1,474	1,652	1,655	1,775	2,006
Transfer	615	658	721	754	840
Other	442	221	230	219	224
TOTAL	2,531	2,531	2,606	2,748	3,070
PERCENT OF APPLICANTS ENROLLING					
Freshmen	24%	25%	22%	20%	21%
Transfer	44%	44%	44%	43%	42%
Other	89%	45%	45%	39%	30%
TOTAL	31%	29%	27%	25%	25%
PERCENT OF ACCEPTED APPLICANTS ENROLLING					
Freshmen	35%	37%	32%	28%	28%
Transfer	63%	62%	65%	62%	62%
Other	91%	51%	47%	43%	33%
TOTAL	44%	42%	38%	34%	33%

Strategic Plan Alignment

**NEW FRESHMEN
SAT AND ACT SCORES
2006-2010**

	Fall 2006		Fall 2007		Fall 2008		Fall 2009		Fall 2010	
	#	%	#	%	#	%	#	%	#	%
SAT TOTAL SCORE										
< 800	0	0.0%	0	0.0%	0	0.0%	0	0.0%	0	0.0%
800-899	20	1.8%	39	3.3%	36	2.6%	146	11.9%	234	17.4%
900-999	378	34.3%	425	35.5%	547	40.2%	362	29.4%	413	30.7%
1000-1099	383	34.7%	390	32.6%	447	32.8%	392	31.8%	405	30.1%
1100-1199	223	20.2%	232	19.4%	229	16.8%	233	18.9%	200	14.9%
1200-1299	80	7.3%	99	8.3%	81	6.0%	77	6.3%	77	5.7%
> 1299	19	1.7%	12	1.0%	21	1.5%	21	1.7%	17	1.3%
Average SAT Score	1047		1039		1030		1028		1008	
South Carolina Average	985		984		985		982		979	
National Average	1021		1017		1017		1016		1017	
ACT COMPOSITE SCORE										
<18	9	2.5%	13	2.9%	14	2.3%	40	7.4%	91	14.0%
18	10	2.8%	16	3.6%	31	5.1%	82	15.2%	105	16.1%
19	50	14.0%	68	15.2%	71	11.6%	95	17.6%	115	17.7%
20	83	23.3%	112	25.1%	121	19.8%	98	18.1%	98	15.1%
21	64	18.0%	71	15.9%	98	16.0%	71	13.1%	81	12.4%
22	58	16.3%	61	13.7%	79	12.9%	52	9.6%	53	8.1%
>22	82	23.0%	105	23.5%	197	32.2%	103	19.0%	108	16.6%
Average ACT Score	21		21		22		21		20	
South Carolina Average	20		20		20		20		20	
National Average	21		21		21		21		21	

**NEW FRESHMEN
HIGH SCHOOL GRADE POINT AVERAGE
2006-2010**

<u>High School GPA</u>	<u>Fall 2006</u>	<u>Fall 2007</u>	<u>Fall 2008</u>	<u>Fall 2009</u>	<u>Fall 2010</u>
< 1.75 %	0 0.0%	0 0.0%	0 0.0%	0 0.0%	0 0.0%
1.75-1.99 %	0 0.0%	0 0.0%	0 0.0%	2 0.1%	5 0.3%
2.00-2.49 %	60 4.2%	71 4.4%	69 4.2%	106 6.1%	126 6.3%
2.50-2.99 %	316 22.1%	352 21.7%	370 22.7%	406 23.2%	432 21.7%
3.00-3.49 %	458 32.0%	535 33.0%	533 32.6%	567 32.4%	642 32.2%
>=3.50 %	599 41.8%	661 40.8%	661 40.5%	668 38.2%	787 39.5%
Total with High School GPA	1,433	1,619	1,633	1,749	1,992
Average High School GPA	3.32	3.32	3.35	3.31	3.34
South Carolina Average	3.37	3.38	3.37	3.39	3.42
National Average	3.33	3.33	3.31	3.32	3.34

**NEW FRESHMEN HIGH SCHOOL COURSE PRE-REQUISITES
REQUIRED BY LAW FOR PUBLIC COLLEGE/UNIVERSITY ADMISSION
% MEETING REQUIREMENT 2006-2010**

<u>Required Prerequisites</u>	<u>2006</u>	<u>2007</u>	<u>2008</u>	<u>2009</u>	<u>2010</u>
English (4 units)	100.0%	99.8%	100.0%	100.0%	100.0%
Mathematics (3 units)	100.0%	99.9%	100.0%	99.9%	100.0%
Laboratory Science (3 units)	96.1%	96.7%	98.5%	98.0%	98.5%
Foreign Language (2 units)	98.6%	98.1%	99.0%	98.5%	98.8%
Advanced Electives (4 unit)	99.7%	97.8%	99.8%	99.0%	99.4%
History (1 unit)	100.0%	100.0%	100.0%	100.0%	100.0%
Social Studies (2 units)	100.0%	99.8%	99.9%	99.7%	100.0%
Physical Education (1 unit)	99.9%	99.3%	99.6%	99.9%	99.7%
All Courses	94.5%	92.3%	97.0%	95.3%	96.5%

**NEW FRESHMEN RETENTION
FALL SEMESTER 2004-2010**

	<u>2004</u>		<u>2005</u>		<u>2006</u>		<u>2007</u>		<u>2008</u>		<u>2009</u>		<u>2010</u>	
# NEW FULL-TIME														
FRESHMEN	1,322		1,495		1,468		1,649		1,643		1,769		1,999	
Adjustments to Cohort	2													
Adjusted Cohort*	1,320													
Returned 2nd Year	850	64.4%	1,008	67.4%	1,044	71.1%	1,178	71.4%	1,083	65.9%	1,141	64.5%		
Returned 3rd Year	694	52.6%	845	56.5%	848	57.8%	945	57.3%	898	54.7%				
Returned 4th Year	637	48.3%	779	52.1%	787	53.6%	851	51.6%						
AFTER 4TH YEAR														
Graduated	288	21.8%	375	25.1%	420	28.6%								
Returned	321	24.3%	404	27.0%	356	24.3%								
Total Retention	609	46.1%	779	52.1%	776	52.9%								
AFTER 5TH YEAR														
Graduated	525	39.8%	641	42.9%										
Returned	68	5.2%	90	6.0%										
Total Retention	593	44.9%	731	48.9%										
AFTER 6TH YEAR														
Graduated	568	43.0%												
Returned	26	2.0%												
Total Retention	594	45.0%												

Cohort	%
2000	42.3%
2001	43.9%
2002	46.5%
2003	46.4%
2004	43.0%

* For reporting purposes, six-year graduation rate is based on Adjusted Cohort.

**FIRST-TIME FULL-TIME FRESHMEN
COMPARISON OF CONTINUING AND NON-CONTINUING
FALL 2009 - FALL 2010**

	FRESHMEN		CONTINUING		NON-CONTINUING	
	Number	Percent	Number	Percent	Number	Percent
ETHNICITY						
Hispanic/Latino	59	3.34%	38	64.41%	21	35.59%
RACE						
American Indian/Alaskan Native	10	0.57%	5	50.00%	5	50.00%
Asian	14	0.79%	7	50.00%	7	50.00%
Black/African American	291	16.48%	220	75.60%	71	24.40%
Native Hawaiian/Pacific Islander	1	0.06%	0	0.00%	1	100.00%
White	1355	76.73%	847	62.51%	508	37.49%
Two or More Races	23	1.30%	13	56.52%	10	43.48%
Non-Resident Alien	13	0.74%	8	61.54%	5	38.46%
Unknown	3		3	100.00%	0	0.00%
Total	1769	100.00%	1141	64.50%	628	35.50%
GENDER						
Men	818	46.24%	505	61.74%	313	38.26%
Women	951	53.76%	636	66.88%	315	33.12%
Total	1769	100.00%	1141	64.50%	628	35.50%
AGE						
less than 20	1747	98.76%	1128	64.57%	619	35.43%
20-22	16	0.90%	9	56.25%	7	43.75%
23-24	2	0.11%	1	50.00%	1	50.00%
25-29	2	0.11%	1	50.00%	1	50.00%
30-39	1	0.06%	1	100.00%	0	0.00%
40-49	0	---	0	---	0	---
50+	1	0.06%	1	100.00%	0	0.00%
No Report	0	---	0	---	0	---
Total	1769	100.00%	1141	64.50%	628	35.50%
GEOGRAPHIC LOCATION						
In-State	779	44.04%	530	68.04%	249	31.96%
Out-of-State	977	55.23%	603	61.72%	374	38.28%
International	13	0.73%	8	61.54%	5	38.46%
Total	1769	100.00%	1141	64.50%	628	35.50%
IN-STATE						
Five-County Service Area						
Dillon	8	0.45%	5	62.50%	3	37.50%
Georgetown	35	1.98%	22	62.86%	13	37.14%
Horry	275	15.55%	182	66.18%	93	33.82%
Marion	18	1.02%	8	44.44%	10	55.56%
Williamsburg	16	0.90%	14	87.50%	2	12.50%
Total	352	19.90%	231	65.63%	121	34.38%
Other SC Counties						
Charleston	32	1.81%	18	56.25%	14	43.75%
Florence	18	1.02%	11	61.11%	7	38.89%
Greenville	39	2.20%	28	71.79%	11	28.21%
Lexington	27	1.53%	20	74.07%	7	25.93%
York	34	1.92%	23	67.65%	11	32.35%
Other	277	15.66%	199	71.84%	78	28.16%
Total	427	24.14%	299	70.02%	128	29.98%

**FIRST-TIME FULL-TIME FRESHMEN
COMPARISON OF CONTINUING AND NON-CONTINUING
FALL 2009 - FALL 2010**

	FRESHMEN		CONTINUING		NON-CONTINUING	
	Number	Percent	Number	Percent	Number	Percent
OUT-OF-STATE						
Connecticut	57	3.22%	33	57.89%	24	42.11%
Illinois	7	0.40%	4	57.14%	3	42.86%
Maryland	149	8.42%	92	61.74%	57	38.26%
New Jersey	176	9.95%	113	64.20%	63	35.80%
New York	121	6.84%	80	66.12%	41	33.88%
North Carolina	40	2.26%	21	52.50%	19	47.50%
Ohio	45	2.54%	21	46.67%	24	53.33%
Pennsylvania	111	6.27%	77	69.37%	34	30.63%
Virginia	90	5.09%	49	54.44%	41	45.56%
West Virginia	3	0.17%	3	100.00%	0	0.00%
Other	178	10.06%	110	61.80%	68	38.20%
International	13	0.73%	8	61.54%	5	38.46%
Total	990	55.96%	611	61.72%	379	38.28%
SAT TOTAL SCORE						
Less than 650	0	---	0	---	0	---
650-699	0	---	0	---	0	---
700-749	0	---	0	---	0	---
750-799	0	---	0	---	0	---
800-849	22	1.79%	17	77.27%	5	22.73%
850-899	123	10.03%	72	58.54%	51	41.46%
900-949	206	16.80%	115	55.83%	91	44.17%
950-999	155	12.64%	98	63.23%	57	36.77%
1000-1099	392	31.97%	266	67.86%	126	32.14%
1100-1199	231	18.84%	141	61.04%	90	38.96%
1200 and above	97	7.91%	66	68.04%	31	31.96%
No SAT Score Reported	543		366	67.40%	177	32.60%
Total	1769	100.00%	1141	64.50%	628	35.50%
ACT TOTAL SCORE						
16-17	40	7.41%	29	72.50%	11	27.50%
18-19	177	32.78%	113	63.84%	64	36.16%
20-21	169	31.30%	117	69.23%	52	30.77%
22-23	83	15.37%	56	67.47%	27	32.53%
24-25	39	7.22%	25	64.10%	14	35.90%
26-27	23	4.26%	16	69.57%	7	30.43%
28-29	6	1.11%	5	83.33%	1	16.67%
30-32	3	0.56%	1	33.33%	2	66.67%
33 and above	0	0.00%	0	---	0	---
No ACT Score Reported	1229		779	63.38%	450	36.62%
Total	1769	100.00%	1141	64.50%	628	35.50%
HIGH SCHOOL RANK						
Top 10%	132	9.21%	109	82.58%	23	17.42%
11-20%	205	14.31%	158	77.07%	47	22.93%
21-30%	239	16.68%	162	67.78%	77	32.22%
31-40%	224	15.63%	137	61.16%	87	38.84%
41-50%	219	15.28%	141	64.38%	78	35.62%
51-60%	152	10.61%	83	54.61%	69	45.39%
61-70%	131	9.14%	65	49.62%	66	50.38%
71-80%	84	5.86%	52	61.90%	32	38.10%
81-90%	41	2.86%	19	46.34%	22	53.66%
Bottom 10%	6	0.42%	3	50.00%	3	50.00%
No High School Rank Reported	336		212	63.10%	124	36.90%
Total	1769	100.00%	1141	64.50%	628	35.50%

**FIRST-TIME FULL-TIME FRESHMEN
COMPARISON OF CONTINUING AND NON-CONTINUING
FALL 2009 - FALL 2010**

	FRESHMEN		CONTINUING		NON-CONTINUING	
	Number	Percent	Number	Percent	Number	Percent
HIGH SCHOOL GPA						
0.000	0	0.00%	0	---	0	---
0.01 - 1.50	0	0.00%	0	---	0	---
1.51 - 1.99	2	0.11%	1	50.00%	1	50.00%
2.00 - 2.49	106	6.08%	50	47.17%	56	52.83%
2.50 - 2.99	403	23.12%	234	58.06%	169	41.94%
3.00 - 3.49	566	32.47%	358	63.25%	208	36.75%
3.50 - 4.00	471	27.02%	331	70.28%	140	29.72%
Higher than 4.00	195	11.19%	147	75.38%	48	24.62%
No High School GPA Reported	26	32.47%	20	76.92%	6	23.08%
Total	1769		1141	64.50%	628	35.50%
FIRST-SEMESTER GPA (End of Fall 2009)						
0.000	34	1.95%	4	11.76%	30	88.24%
0.01 - 1.50	126	7.22%	36	28.57%	90	71.43%
1.51 - 1.99	110	6.30%	58	52.73%	52	47.27%
2.00 - 2.49	194	11.12%	120	61.86%	74	38.14%
2.50 - 2.99	351	20.11%	249	70.94%	102	29.06%
3.00 - 3.49	484	27.74%	341	70.45%	143	29.55%
3.50 - 4.00	446	25.56%	329	73.77%	117	26.23%
WITHDREW	24	1.38%	4	16.67%	20	83.33%
Total	1769		1141	64.50%	628	35.50%
FIRST-YEAR CUMMULATIVE GPA (End of Spring 2010)						
0.000	8	0.46%	1	12.50%	7	87.50%
0.01 - 1.50	89	5.10%	12	13.48%	77	86.52%
1.51 - 1.99	106	6.07%	71	66.98%	35	33.02%
2.00 - 2.49	223	12.78%	171	76.68%	52	23.32%
2.50 - 2.99	353	20.23%	274	77.62%	79	22.38%
3.00 - 3.49	446	25.56%	357	80.04%	89	19.96%
3.50 - 4.00	296	16.96%	241	81.42%	55	18.58%
WITHDREW	248	14.21%	14	5.65%	234	94.35%
Total	1769		1141	64.50%	628	35.50%

**FIRST-TIME FULL-TIME FRESHMEN
COMPARISON OF CONTINUING AND NON-CONTINUING
FALL 2009 - FALL 2010**

	FRESHMEN		CONTINUING		NON-CONTINUING	
	Number	Percent	Number	Percent	Number	Percent
MAJOR						
BUSINESS						
Accounting	60	15.50%	45	75.00%	15	25.00%
Economics (BS)	13	8.90%	7	53.85%	6	46.15%
Finance	30	7.75%	22	73.33%	8	26.67%
Management	146	37.73%	101	69.18%	45	30.82%
Marketing	101	26.10%	71	70.30%	30	29.70%
Resort Tourism Management	37	9.56%	22	59.46%	15	40.54%
Total	387	23.55%	268	69.25%	119	30.75%
EDUCATION						
Early Childhood Education	56	33.94%	37	66.07%	19	33.93%
Elementary Education	48	29.09%	38	79.17%	10	20.83%
Middle Level Education	18	10.91%	13	72.22%	5	27.78%
*Physical Education	29	17.58%	15	51.72%	14	48.28%
Special Education	14	8.48%	7	50.00%	7	50.00%
Total	165	10.04%	110	66.67%	55	33.33%
HUMANITIES & FINE ARTS						
Art Studio	35	15.22%	26	74.29%	9	25.71%
Communication	63	27.39%	45	71.43%	18	28.57%
Dramatic Arts	13	5.65%	12	92.31%	1	7.69%
English	20	8.70%	15	75.00%	5	25.00%
History	22	9.57%	13	59.09%	9	40.91%
Music	24	10.43%	16	66.67%	8	33.33%
Musical Theatre	15	6.52%	12	80.00%	3	20.00%
Philosophy	1	0.43%	0	0.00%	1	100.00%
Political Science	33	14.35%	19	57.58%	14	42.42%
Spanish	4	1.74%	2	50.00%	2	50.00%
Total	230	14.00%	160	69.57%	70	30.43%
SCIENCE						
Biology	164	23.50%	98	59.76%	66	40.24%
Chemistry	17	2.44%	8	47.06%	9	52.94%
Computer Science	42	6.02%	30	71.43%	12	28.57%
Exercise and Sport Science	83	50.30%	50	60.24%	33	39.76%
Health Promotion	13	7.88%	6	46.15%	7	53.85%
Marine Science	199	28.51%	133	66.83%	66	33.17%
Mathematics	22	3.15%	13	59.09%	9	40.91%
Physics	8	1.15%	4	50.00%	4	50.00%
Psychology	92	13.18%	62	67.39%	30	32.61%
Recreation Sports Management	46	27.88%	26	56.52%	20	43.48%
Sociology	12	1.72%	8	66.67%	4	33.33%
Total	698	42.48%	438	62.75%	260	37.25%
UNIVERSITY						
**Interdisciplinary Studies	0	---	0	---	0	---
Undeclared	289	17.59%	165	57.09%	124	42.91%
GRAND TOTAL	1769		1141		628	

*Major moved from the College of Science to the College of Education Fall 2010.

**Profile of Coastal Carolina University's
First-Time Full-Time Freshmen
Fall 2010**

	FRESHMEN	
	Number	Percent
ETHNICITY		
Hispanic/Latino	73	3.7%
RACE		
American Indian/Alaskan Native	6	0.3%
Asian	12	0.6%
Black/African American	395	19.8%
Native Hawaiian/Pacific Islander	5	0.3%
White	1438	71.9%
Two or More Races	52	2.6%
Non-Resident Alien	14	0.7%
Unknown	4	0.2%
Total	1999	100.0%
GENDER		
Male	911	45.6%
Female	1088	54.4%
Total	1999	100.0%
AGE		
less than 20	1974	98.7%
20-22	19	1.0%
23-24	5	0.3%
25-29	1	0.1%
30-39	0	0.0%
40-49	0	0.0%
50+	0	0.0%
No Report	0	0.0%
Total	1999	100.0%
GEOGRAPHIC LOCATION		
In-State	933	46.7%
Out-of-State	1052	52.6%
International	14	0.7%
Total	1999	100.0%
IN-STATE		
Five-County Service Area		
Dillon	8	0.4%
Georgetown	26	1.3%
Horry	272	13.6%
Marion	9	0.5%
Williamsburg	14	0.7%
Total	329	16.5%
Other SC Counties		
Charleston	46	2.3%
Florence	41	2.1%
Greenville	62	3.1%
Lexington	29	1.5%
York	43	2.2%
Other	383	19.2%
Total	604	30.2%

	FRESHMEN	
	Number	Percent
OUT-OF -STATE		
Connecticut	45	2.3%
Illinois	7	0.4%
Maryland	138	6.9%
New Jersey	219	11.0%
New York	138	6.9%
North Carolina	57	2.9%
Ohio	42	2.1%
Pennsylvania	99	5.0%
Virginia	70	3.5%
West Virginia	14	0.7%
Other	223	11.2%
International	14	0.7%
Total	1066	53.3%

SAT TOTAL SCORE		
Less than 650	0	0.0%
650-699	0	0.0%
700-749	0	0.0%
750-799	0	0.0%
800-849	63	3.2%
850-899	171	8.6%
900-949	205	10.3%
950-999	208	10.4%
1000-1099	405	20.3%
1100-1199	199	10.0%
1200 and above	93	4.7%
No Report	655	32.8%
Total	1999	100.0%

ACT TOTAL SCORE		
Less than 16	0	0.0%
16-17	91	4.6%
18-19	219	11.0%
20-21	179	9.0%
22-23	84	4.2%
24-25	39	2.0%
26-27	27	1.4%
28-29	10	0.5%
30-32	1	0.1%
33 and above	0	0.0%
No Report	1349	67.5%
Total	1999	100.0%

	FRESHMEN	
	Number	Percent
HIGH SCHOOL RANK		
Top 10%	147	7.4%
11-20%	238	11.9%
21-30%	270	13.5%
31-40%	223	11.2%
41-50%	230	11.5%
51-60%	195	9.8%
61-70%	150	7.5%
71-80%	88	4.4%
81-90%	44	2.2%
Bottom 10%	12	0.6%
GED	2	0.1%
No Report	400	20.0%
Total	1999	100.0%
HIGH SCHOOL GPA		
1.51 - 1.99	5	0.3%
2.00 - 2.49	126	6.3%
2.50 - 2.99	432	21.6%
3.00 - 3.49	640	32.0%
3.50 - 4.00	541	27.1%
Higher than 4.00	245	12.3%
No Report	10	0.5%
Total	1999	100.0%

MAJOR	FRESHMEN	
	Number	Percent
BUSINESS		
Accounting	71	3.6%
Economics (BA)	2	0.1%
Economics (BS)	11	0.6%
Finance	19	1.0%
Management	129	6.5%
Marketing	94	4.7%
Resort Tourism Management	60	3.0%
Total	386	19.3%
EDUCATION		
Early Childhood Education	67	3.4%
Elementary Education	50	2.5%
Middle Level Education	25	1.3%
Physical Education	31	1.6%
Special Education	24	1.2%
Total	197	9.9%
HUMANITIES & FINE ARTS		
Art Studio	19	1.0%
Communication	92	4.6%
Dramatic Arts	14	0.7%
English	24	1.2%
Graphic Design	20	1.0%
History	29	1.5%
Music	22	1.1%
Musical Theatre	12	0.6%
Philosophy	2	0.1%
Political Science	42	2.1%
Spanish	4	0.2%
Theatre Arts	6	0.3%
Total	286	14.3%
SCIENCE		
Biochemistry	2	0.1%
Biology	192	9.6%
Chemistry	19	1.0%
Computer Science	67	3.4%
Exercise and Sport Science	91	4.6%
Health Promotion	33	1.7%
Information Systems	4	0.2%
Marine Science	225	11.3%
Mathematics	28	1.4%
Physics	7	0.4%
Psychology	124	6.2%
Recreation Sports Management	58	2.9%
Sociology	22	1.1%
Total	872	43.6%
UNIVERSITY		
Interdisciplinary Studies	0	0.0%
Undeclared	258	12.9%
GRAND TOTAL	1999	100.0%

First-time Transfer Students

Coastal Carolina University

Fact Book

Office of Institutional Research, Assessment and Analysis

Fall 2010



FIRST-TIME TRANSFER STUDENTS

TABLE OF CONTENTS

First-time Transfer Highlights	35
Migration of Transfer Students to Coastal Carolina	37
Migration of Transfer Students from Coastal Carolina	38
New Transfer Student Retention	39
First-time Full-time Transfer Students One Year Retention	40
Profile of First-time Full-time Transfer Students.....	43

FIRST-TIME TRANSFER STUDENTS HIGHLIGHTS

Fact Book, 2010

Enrollment and academic trends of first-time transfer students show the following:

- The number of students (754) who transferred to Coastal Carolina University in 2009 increased by 5% over 2008. Transfer students who came to Coastal Carolina University from other South Carolina higher education institutions comprised approximately 47% of the total transfer student population in 2009. The majority of these in-state transfer students (51%), were previously enrolled at Horry-Georgetown Technical College.
- The first year student retention rate for 2009 transfer students was 70%, a decrease of 4% over the 2008 rate.
- There were a total of 690 first-time full-time transfer students enrolled at Coastal Carolina University in the fall of 2009. Of the 2009 transfer cohort, 464 students chose to continue their studies the following year at Coastal Carolina University. The one year retention for the 2009 cohort is 67.2% which is lower than the one year retention for the Fall 2008 cohort (73.2%).
- In geographic origin, 241 (52%) of continuing students were native to South Carolina and 224 (48%) consisted of students from other U.S. states or countries.
- Among the academic colleges the continuation of first-time full-time transfer students for this period was as follows: Wall College of Business Administration (68%), Spadoni College of Education (64%), Edwards College of Humanities and Fine Arts (73%), College of Science (66%) and University College (63%).

Demographics - First-Time Full-Time Transfers - Fall 2010

- The most prominent ethnic groups among the Fall 2010 first-time full-time transfers were White (71%), Black/African Americans (19%) and Hispanic/Latinos (4%).
- The number of male and female first-time full-time transfers to Coastal Carolina University were nearly equal with females (51%) outnumbering males (49%).
- First-time full-time transfers during this period consisted mostly of students between the ages of 20 and 22 (55%) and less than 20 years of age (23%).
- Among the full-time first-time transfers during Fall 2010 there were more in-state students enrolled (52%) than out-of-state (46%). International students accounted for the other 2% of full-time first-time transfer students.

- In Fall 2010 approximately 32% of the first-time full-time transfer students at Coastal Carolina University originated from the immediate five-county service area of Dillon, Georgetown, Horry, Marion, and Williamsburg counties. Approximately 20% originated from other South Carolina counties.
- Of the 777 first-time full-time transfers to Coastal Carolina University in Fall 2010, 62% transferred more than thirty credit hours, 3% transferred with 30 hours and 35% transferred with less than 30 hours.
- For the full-time first-time transfers during Fall 2010 approximately four percent (4%) had not declared a major. The most popular majors for transfers to Coastal Carolina University included: Management (12%), Biology (8%), Psychology (7%), Marine Science (6%) and Marketing (5%).

Strategic Plan Alignment

Strategy 4: Ensuring financial viability and managed growth

The University's five-year enrollment plan projected 758 new transfer students; actual transfers in Fall 2010 were 777.

**MIGRATION OF TRANSFER STUDENTS
TO
COASTAL CAROLINA UNIVERSITY
2005-2009**

SC Transfers From:	2005	2006	2007	2008	2009
The Citadel	0	0	3	1	2
Clemson University	4	4	2	3	6
College of Charleston	2	5	11	5	13
Francis Marion University	7	8	12	10	6
Lander University	4	4	1	2	1
S.C. State University	3	4	7	4	5
USC-Columbia	15	20	26	22	28
USC-Aiken	0	3	0	2	0
USC-Beaufort	0	0	0	1	0
USC-Upstate	2	1	1	0	1
Winthrop	5	4	6	3	8
MUSC	0	0	0	0	0
Two-year USC Campuses	2	5	2	4	3
Horry-Georgetown Technical College	106	112	122	160	178
Other SC Technical Colleges	47	51	52	64	63
Private Senior Institutions	21	27	28	37	35
Private Two-year Colleges	7	7	5	6	3
Total SC Transfers	225	255	278	324	352
Out-of-State Colleges	346	360	380	397	393
Foreign Colleges	18	0	0	0	9
Total Transfers	589	615	658	721	754

Source: SC Commission on Higher Education

**MIGRATION OF TRANSFER STUDENTS
FROM
COASTAL CAROLINA UNIVERSITY
2005-2009**

SC Transfers To:	2005	2006	2007	2008	2009
The Citadel	2	1	0	1	1
Clemson University	14	15	18	14	19
College of Charleston	19	14	23	16	18
Francis Marion University	14	11	12	12	10
Lander University	1	2	1	0	0
S.C. State University	3	1	2	1	0
USC-Columbia	31	21	22	24	35
USC-Aiken	1	4	1	2	5
USC-Beaufort	2	0	1	0	2
USC-Upstate	5	6	4	5	3
Winthrop	7	3	3	5	1
MUSC	0	0	1	2	2
Two-year USC Campuses	5	6	4	6	3
Horry-Georgetown Technical College	103	55	68	84	82
Other SC Technical Colleges	35	47	58	46	81
Private Senior Institutions	8	5	7	15	6
Private Two-year Colleges	0	2	0	0	0
Total SC Transfers	250	193	225	233	268

Source: SC Commission on Higher Education

**NEW TRANSFER STUDENT RETENTION
FALL SEMESTER 2004-2010**

Summary

	2004	2005	2006	2007	2008	2009	2010
# NEW FULL-TIME TRANSFER STUDENTS	553	560	583	611	669	690	777
Adjustments to Cohort	1						
Adjusted Cohort	552						
AFTER 1ST YEAR							
Graduated	16 2.9%	15 2.7%	9 1.5%	11 1.9%	6 0.9%	16 2.3%	
Returned	407 73.7%	378 67.5%	409 70.2%	459 78.7%	490 73.2%	464 67.2%	
Total Retention	423 76.6%	393 70.2%	418 71.7%	470 80.6%	496 74.1%	480 69.6%	
AFTER 2ND YEAR							
Graduated	61 11.1%	82 14.6%	64 11.0%	73 12.5%	72 10.8%		
Returned	309 56.0%	265 47.3%	322 55.2%	332 56.9%	381 57.0%		
Total Retention	370 67.0%	347 62.0%	386 66.2%	405 69.5%	453 67.7%		
AFTER 3RD YEAR							
Graduated	182 33.0%	196 35.0%	224 38.4%	220 37.7%			
Returned	164 29.7%	131 23.4%	139 23.8%	156 26.8%			
Total Retention	346 62.7%	327 58.4%	363 62.3%	376 64.5%			
AFTER 4TH YEAR							
Graduated	273 49.5%	274 48.9%	321 55.1%				
Returned	60 10.9%	45 8.0%	36 6.2%				
Total Retention	333 60.3%	319 57.0%	357 61.2%				
AFTER 5TH YEAR							
Graduated	310 56.2%	309 55.2%					
Returned	23 4.2%	16 2.9%					
Total Retention	333 60.3%	325 58.0%					
AFTER 6TH YEAR							
Graduated	320 58.0%						
Returned	10 1.8%						
Total Retention	330 59.8%						

**FIRST-TIME FULL-TIME TRANSFER
COMPARISON OF CONTINUING AND NON-CONTINUING
FALL 2009 - FALL 2010**

	TRANSFER		CONTINUING		NON-CONTINUING	
	Number	Percent	Number	Percent	Number	Percent
ETHNICITY						
Hispanic/Latino	25	3.66%	13	52.00%	12	48.00%
RACE						
American Indian/Alaskan Native	3	0.44%	2	66.67%	1	33.33%
Asian	2	0.29%	2	100.00%	0	0.00%
Black/African American	107	15.67%	77	71.96%	30	28.04%
Native Hawaiian/Pacific Islander	1	0.15%	1	100.00%	0	0.00%
White	525	76.87%	353	67.24%	172	32.76%
Two or More Races	6	0.88%	3	50.00%	3	50.00%
Non-Resident Alien	14	2.05%	10	71.43%	4	28.57%
Unknown	7	---	4	57.14%	3	42.86%
Total	690	100.00%	465	67.39%	225	32.61%
GENDER						
Men	330	47.83%	214	64.85%	116	35.15%
Women	360	52.17%	251	69.72%	109	30.28%
Total	690	100.00%	465	67.39%	225	32.61%
AGE						
less than 20	111	16.09%	76	68.47%	35	31.53%
20-22	384	55.65%	259	67.45%	125	32.55%
23-24	64	9.28%	43	67.19%	21	32.81%
25-29	81	11.74%	46	56.79%	35	43.21%
30-39	30	4.35%	26	86.67%	4	13.33%
40-49	18	2.61%	14	77.78%	4	22.22%
50+	2	0.29%	1	50.00%	1	50.00%
No Report	0	---	0	---	0	---
Total	690	100.00%	465	67.39%	225	32.61%
GEOGRAPHIC LOCATION						
In-State	354	51.30%	241	68.08%	113	31.92%
Out-of-State	322	46.67%	214	66.46%	108	33.54%
International	14	2.03%	10	71.43%	4	28.57%
Total	690	100.00%	465	67.39%	225	32.61%
IN-STATE						
Five-County Service Area						
Dillon	2	0.29%	2	100.00%	0	0.00%
Georgetown	32	4.64%	23	71.88%	9	28.13%
Horry	211	30.58%	143	67.77%	68	32.23%
Marion	7	1.01%	3	42.86%	4	57.14%
Williamsburg	4	0.58%	2	50.00%	2	50.00%
Total	256	37.10%	173	67.58%	83	32.42%
Other SC Counties						
Charleston	10	1.45%	8	80.00%	2	20.00%
Florence	6	0.87%	5	83.33%	1	16.67%
Greenville	5	0.72%	3	60.00%	2	40.00%
Lexington	3	0.43%	0	0.00%	3	100.00%
York	6	0.87%	3	50.00%	3	50.00%
Other	68	9.86%	49	72.06%	19	27.94%
Total	98	14.20%	68	69.39%	30	30.61%

**FIRST-TIME FULL-TIME TRANSFER
COMPARISON OF CONTINUING AND NON-CONTINUING
FALL 2009 - FALL 2010**

	TRANSFER		CONTINUING		NON-CONTINUING	
	Number	Percent	Number	Percent	Number	Percent
OUT-OF -STATE						
Connecticut	16	2.32%	13	81.25%	3	18.75%
Illinois	5	0.72%	2	40.00%	3	60.00%
Maryland	32	4.64%	20	62.50%	12	37.50%
New Jersey	33	4.78%	24	72.73%	9	27.27%
New York	88	12.75%	63	71.59%	25	28.41%
North Carolina	18	2.61%	10	55.56%	8	44.44%
Ohio	10	1.45%	6	60.00%	4	40.00%
Pennsylvania	25	3.62%	16	64.00%	9	36.00%
Virginia	21	3.04%	13	61.90%	8	38.10%
West Virginia	6	0.87%	4	66.67%	2	33.33%
Other	68	9.86%	43	63.24%	25	36.76%
International	14	2.03%	10	71.43%	4	28.57%
Total	336	48.70%	224	66.67%	112	33.33%
CUMULATIVE CREDIT HOURS TRANSFERRED TO CCU						
Less than 30 hours	164	23.8%	0	0.00%	164	100.00%
30 hours	21	3.0%	0	0.00%	21	100.00%
More than 30 hours	505	73.2%	0	0.00%	505	100.00%
TOTAL	690	100.0%	0	0.00%	690	100.00%

**FIRST-TIME FULL-TIME TRANSFER
COMPARISON OF CONTINUING AND NON-CONTINUING
FALL 2009 - FALL 2010**

MAJOR	TRANSFER		CONTINUING		NON-CONTINUING	
	Number	Percent	Number	Percent	Number	Percent
BUSINESS						
Accounting	37	5.36%	25	67.57%	12	32.43%
Economics	7	1.01%	5	71.43%	2	28.57%
Finance	16	2.32%	11	68.75%	5	31.25%
Management	70	10.14%	46	65.71%	24	34.29%
Marketing	39	5.65%	27	69.23%	12	30.77%
Resort Tourism Management	18	2.61%	14	77.78%	4	22.22%
Total	187	27.10%	128	68.45%	59	31.55%
EDUCATION						
Early Childhood Education	37	5.36%	23	62.16%	14	37.84%
Elementary Education	38	5.51%	27	71.05%	11	28.95%
Middle Level Education	6	0.87%	5	83.33%	1	16.67%
*Physical Education	23	3.33%	11	47.83%	12	52.17%
Special Education	7	1.01%	5	71.43%	2	28.57%
Total	111	16.09%	71	63.96%	40	36.04%
HUMANITIES & FINE ARTS						
Art Studio	24	3.48%	18	75.00%	6	25.00%
Communication	28	4.06%	19	67.86%	9	32.14%
Dramatic Arts	2	0.29%	1	50.00%	1	50.00%
English	8	1.16%	7	87.50%	1	12.50%
History	22	3.19%	17	77.27%	5	22.73%
Music	10	1.45%	7	70.00%	3	30.00%
Musical Theatre	3	0.43%	2	66.67%	1	33.33%
Philosophy	6	0.87%	2	33.33%	4	66.67%
Political Science	25	3.62%	20	80.00%	5	20.00%
Spanish	0	0.00%	0	---	0	---
Total	128	18.55%	93	72.66%	35	27.34%
SCIENCE						
Biology	50	7.25%	31	62.00%	19	38.00%
Chemistry	8	1.16%	4	50.00%	4	50.00%
Computer Science	21	3.04%	13	61.90%	8	38.10%
Exercise and Sport Science	17	2.46%	12	70.59%	5	29.41%
Health Promotion	11	1.59%	7	63.64%	4	36.36%
Marine Science	42	6.09%	27	64.29%	15	35.71%
Mathematics	9	1.30%	6	66.67%	3	33.33%
Physics	3	0.43%	1	33.33%	2	66.67%
Psychology	33	4.78%	23	69.70%	10	30.30%
Recreation and Sport Management	30	4.35%	20	66.67%	10	33.33%
Sociology	15	2.17%	13	86.67%	2	13.33%
Total	239	34.64%	157	65.69%	82	34.31%
UNIVERSITY						
Interdisciplinary Studies	3	0.43%	2	66.67%	1	33.33%
Undeclared	22	3.19%	14	63.64%	8	36.36%
GRAND TOTAL	690		465		225	

*Major moved from the College of Science to the College of Education Fall 2010.

**Profile of Coastal Carolina University's
First-Time Full-Time Transfers
Fall 2010**

	TRANSFERS	
	Number	Percent
ETHNICITY		
Hispanic/Latino	27	3.5%
RACE		
American Indian/Alaskan Native	1	0.1%
Asian	8	1.0%
Black/African American	149	19.2%
Native Hawaiian/Pacific Islander	1	0.1%
White	552	71.0%
Two or More Races	16	2.1%
Non-Resident Alien	21	2.7%
Unknown	2	0.3%
Total	777	100.0%
GENDER		
Male	383	49.3%
Female	394	50.7%
Total	777	100.0%
AGE		
less than 20	175	22.5%
20-22	428	55.1%
23-24	74	9.5%
25-29	57	7.3%
30-39	28	3.6%
40-49	10	1.3%
50+	5	0.6%
No Report	0	0.0%
Total	777	100.0%
GEOGRAPHIC LOCATION		
In-State	401	51.6%
Out-of-State	355	45.7%
International	21	2.7%
Total	777	100.0%
IN-STATE		
Five-County Service Area		
Dillon	8	1.0%
Georgetown	35	4.5%
Horry	190	24.5%
Marion	6	0.8%
Williamsburg	8	1.0%
Total	247	31.8%
Other SC Counties		
Charleston	9	1.2%
Florence	10	1.3%
Greenville	7	0.9%
Lexington	11	1.4%
York	16	2.1%
Other	101	13.0%
Total	154	19.8%
Strategic Plan Alignment		

	TRANSFERS	
	Number	Percent
OUT-OF -STATE		
Connecticut	19	2.4%
Illinois	3	0.4%
Maryland	35	4.5%
New Jersey	59	7.6%
New York	93	12.0%
North Carolina	18	2.3%
Ohio	8	1.0%
Pennsylvania	26	3.3%
Virginia	15	1.9%
West Virginia	1	0.1%
Other	78	10.0%
International	21	2.7%
Total	376	48.4%

CUMULATIVE CREDIT HOURS TRANSFERRED TO CCU

Less than 30 hours	268	34.5%
30 hours	23	3.0%
More than 30 hours	486	62.5%
Total	777	100.0%

	TRANSFERS	
	Number	Percent
MAJOR BUSINESS		
Accounting	29	3.7%
Economics (BA)	1	0.1%
Economics (BS)	8	1.0%
Finance	16	2.1%
Management	91	11.7%
Marketing	42	5.4%
Resort Tourism Management	16	2.1%
Total	203	26.1%
EDUCATION		
Early Childhood Education	35	4.5%
Elementary Education	25	3.2%
Middle Level Education	5	0.6%
Physical Education	29	3.7%
Special Education	16	2.1%
Total	110	14.2%
HUMANITIES & FINE ARTS		
Art Studio	5	0.6%
Communication	30	3.9%
Dramatic Arts	3	0.4%
English	8	1.0%
Graphic Design	12	1.5%
History	22	2.8%
Music	5	0.6%
Musical Theatre	1	0.1%
Philosophy	3	0.4%
Political Science	16	2.1%
Spanish	4	0.5%
Theatre Arts	1	0.1%
Total	110	14.2%
SCIENCE		
Biochemistry	1	0.1%
Biology	62	8.0%
Chemistry	6	0.8%
Computer Science	16	2.1%
Exercise and Sport Science	40	5.1%
Health Promotion	18	2.3%
Information Systems	4	0.5%
Marine Science	48	6.2%
Mathematics	8	1.0%
Physics	2	0.3%
Psychology	52	6.7%
Recreation Sports Management	30	3.9%
Sociology	30	3.9%
Total	317	40.8%
UNIVERSITY		
Interdisciplinary Studies	6	0.8%
Undeclared	31	4.0%
TOTAL	777	100.0%

Academics

Coastal Carolina University

Fact Book

Office of Institutional Research, Assessment and Analysis

Fall 2010



ACADEMICS

TABLE OF CONTENTS

Academic Highlights	49
Undergraduate Major by Class	51
Undergraduate Enrollment by Major	52
Graduate Enrollment by Major	53
Undergraduate Major by Average Age.....	54
Average Size of Lecture Classes by Discipline and Level	55
Average Grade Point Ratio by Class	56
Grade Distribution by Discipline, Fall 2010	58
Credit Hour and FTE Production by Discipline, Fall 2009	60
Credit Hour and FTE Production by Discipline, Fall 2010	61
Trends in Student/Faculty Ratio.....	62
Total Undergraduate Degrees Awarded by Major.....	63
Total Graduate Degrees Awarded by Major.....	64
Total Degrees Awarded	65

ACADEMIC HIGHLIGHTS

Fact Book, 2010

Undergraduate Major by Class

In Fall 2010 there were 8,203 undergraduates, of whom 33% were freshmen, 21% sophomores, 20% juniors, 22% seniors, and 3% non-degree seeking students.

Enrollment By Major

Undergraduate: There was a 28% increase in undergraduate student enrollment at Coastal Carolina University between Fall 2005 and Fall 2010.

- Wall College of Business Administration: 8% increase between Fall 2005 and Fall 2010. Over the five year period, the Economics major grew in enrollment over 491%.
- Spadoni College of Education: 5% decrease between Fall 2005 and Fall 2010. Over the five year period, the enrollment in Middle Level Education and Special Education have both increased over 40%.
- Edwards College of Humanities and Fine Arts: 67% increase between Fall 2005 and Fall 2010. The Music major grew in enrollment 31% and enrollment in the Musical Theatre major has increased 27% over the five year period.
- College of Science: 57% increase between Fall 2005 and Fall 2010. The Biology, Computer Science, and Psychology majors continue to grow as well with increases in enrollment over the five year period at 49%, 31% and 22% respectively.

Graduate: There was a 218% increase in the number of degree-seeking graduate students at Coastal Carolina University between Fall 2005 and Fall 2010.



COASTAL CAROLINA
UNIVERSITY

www.coastal.edu

Average Size of Lecture Classes

In Fall 2010 the average size of lower- and upper-division lecture classes for the University was 27.0 and 23.0 respectfully. Over the last three years, there has been a decrease in the average size of lower-division lecture classes and increase in the average size of upper-division lecture classes.

Total Degrees Awarded

In 2009-2010, 1,381 degrees were awarded. Since 1974, Coastal Carolina University has awarded 19,687 degrees ranging from the associate to master levels. The Wall College of Business awarded the highest number of degrees (5,444) between 1974 and 2010.

Strategic Plan Progression

Strategy 1: Meeting the educational needs of students

Goal 1.1: Increase number of academic majors

The following majors were added in 2010: Undergraduate- Graphic Design, Biochemistry, Information Systems; Graduate- Master of Education in Learning and Teaching and Master of Arts in Writing.

UNDERGRADUATE MAJOR BY CLASS FALL 2010

	<u>Freshman</u>	<u>Sophomore 30 Hours Completed</u>	<u>Junior 60 Hours Completed</u>	<u>Senior 90 Hours Completed</u>	<u>Non- Degree Seeking</u>	<u>Total</u>
College of Business						
Accounting	96	63	70	90	0	319
Economics (BA)	3	1	1	1	0	6
Economics (BS)	19	10	11	25	0	65
Finance	31	34	45	62	0	172
Management	221	169	174	197	0	761
Marketing	137	92	96	110	0	435
Resort Tourism Management	81	51	58	27	0	217
College of Education						
Early Childhood Education	88	70	71	90	0	319
Elementary Education	74	47	52	81	0	254
Middle Level Education	28	26	23	19	0	96
Physical Education	51	32	30	41	0	154
Special Education	28	24	21	15	0	88
College of Humanities & Fine Arts						
Art Studio	28	30	23	23	0	104
Communication	147	107	107	109	0	470
Dramatic Arts	17	9	12	8	0	46
English	32	38	44	42	0	156
Graphic Design	30	22	17	11	0	80
History	38	49	68	59	0	214
Music	28	20	18	28	0	94
Musical Theatre	12	14	11	5	0	42
Philosophy	4	4	5	10	0	23
Politics	57	41	60	65	0	223
Spanish	6	6	5	18	0	35
Theatre Arts	7	6	2	1	0	16
College of Science						
Biochemistry	4	2	4	1	0	11
Biology	251	112	127	108	0	598
Chemistry	23	10	9	10	0	52
Computer Science	86	46	34	48	0	214
*Exercise & Sport Science	133	119	77	60	0	389
*Health Promotion	42	49	44	82	0	217
Information Systems	6	2	0	2	0	10
Marine Science	278	140	96	114	0	628
Math	41	16	14	16	0	87
Physics	11	5	6	6	0	28
Psychology	170	115	94	88	0	467
*Recreation Sport Management	83	85	67	77	0	312
Sociology	34	35	49	44	0	162
University						
**Interdisciplinary Studies	2	7	16	30	0	55
Undeclared	310	39	3	3	229	584
GRAND TOTAL	2,737	1,747	1,664	1,826	229	8,203

*Major moved from the College of Education to the College of Science July 1, 2009.

**Major moved from College of Humanities and Fine Arts to the University College July 1, 2009.

**UNDERGRADUATE ENROLLMENT BY MAJOR
FALL SEMESTERS 2005-2010**

COLLEGE	2005	2006	2007	2008	2009	2010	5-Year % Change
Business							
Accounting	199	230	258	306	308	319	60.3%
Economics (BA)	----	----	----	----	1	6	N/A
Economics (BS)	11	25	39	52	65	65	490.9%
Finance	171	203	246	248	216	172	0.6%
Management	767	817	800	823	810	761	-0.8%
Marketing	561	508	503	490	459	435	-22.5%
Resort Tourism Management	129	210	249	260	203	217	68.2%
TOTAL	1,838	1,993	2,095	2,179	2,062	1,975	7.5%
Education							
Early Childhood Education	280	277	286	267	292	319	13.9%
Elementary Education	273	243	222	231	255	254	-7.0%
Middle Level Education	57	54	48	62	77	96	68.4%
Physical Education	288	177	183	166	157	154	-46.5%
Special Education	62	59	54	59	64	88	41.9%
TOTAL	960	810	793	785	845	911	-5.1%
Humanities & Fine Arts							
Art Studio	145	153	140	142	165	104	-28.3%
Communication	----	150	298	371	400	470	N/A
Dramatic Arts	45	40	36	36	38	46	2.2%
English	179	154	168	152	150	156	-12.8%
Graphic Design	----	----	----	----	----	80	N/A
History	176	186	189	180	211	214	21.6%
Music	72	81	73	86	91	94	30.6%
Musical Theatre	33	40	36	47	50	42	27.3%
Philosophy	20	22	20	13	23	23	15.0%
Politics	197	187	191	212	225	223	13.2%
Spanish	31	26	28	29	36	35	12.9%
Theatre Arts	----	----	----	----	----	16	N/A
TOTAL	898	1,039	1,179	1,268	1,389	1,503	67.4%
Science							
Biochemistry	----	----	----	----	----	11	N/A
Biology	402	379	454	518	564	598	48.8%
Chemistry	41	30	39	44	51	52	26.8%
Computer Science	163	149	168	182	202	214	31.3%
**Exercise & Sport Science	----	----	----	159	289	389	N/A
**Health Promotion	276	317	352	285	216	217	-21.4%
Information Systems	----	----	----	----	----	10	N/A
Marine Science	560	529	526	567	566	628	12.1%
Math	84	91	89	69	76	87	3.6%
Physics	----	4	9	22	28	28	N/A
Psychology	382	392	429	433	420	467	22.3%
**Recreation Sport Management	----	206	249	286	284	312	N/A
Sociology	112	140	119	130	114	162	44.6%
TOTAL	2,020	2,237	2,434	2,695	2,810	3,175	57.2%
University							
***Interdisciplinary Studies	89	66	53	50	53	55	-38.2%
Undeclared	310	289	297	345	385	355	14.5%
Non-Degree Seeking	282	226	219	251	376	229	-18.8%
ENROLLMENT TOTAL	6,397	6,660	7,070	7,573	7,920	8,203	28.2%

**Major moved from the College of Education to the College of Science July 1, 2009.

***Major moved from College of Humanities and Fine Arts to the University College July 1, 2009.

**GRADUATE ENROLLMENT BY MAJOR
FALL SEMESTERS 2005-2010**

COLLEGE	<u>2005</u>	<u>2006</u>	<u>2007</u>	<u>2008</u>	<u>2009</u>	<u>2010</u>	<u>5-Year % Change</u>
Business							
Master of Business Administration	----	32	42	40	39	41	N/A
Business Administration - Accounting	----	1	10	13	14	15	N/A
TOTAL	----	33	52	53	53	56	N/A
Education							
Master of Arts in Teaching:							
Art	8	6	9	9	7	7	-12.5%
English	9	5	4	6	3	13	44.4%
Math	5	2	0	3	5	3	-40.0%
Music	3	3	5	6	10	2	-33.3%
Science	10	10	3	9	11	13	30.0%
Social Studies	18	19	15	25	24	23	27.8%
Master of Education:							
Early Childhood Education	4	7	13	20	23	6	50.0%
Educational Leadership	----	----	----	----	79	103	N/A
Elementary Education	11	22	22	41	25	8	-27.3%
Learning and Teaching	----	----	----	----	----	42	N/A
Secondary Education:							
English	0	2	3	4	6	3	N/A
Math	3	5	4	4	4	2	-33.3%
Music	1	1	1	2	0	0	-100.0%
Science	1	2	3	4	4	2	100.0%
Social Studies	1	2	5	6	3	4	300.0%
Instructional Technology	7	7	----	----	----	----	N/A
TOTAL	81	93	87	139	204	231	185.2%
Humanities & Fine Arts							
Master of Arts in Writing	----	----	----	----	----	10	N/A
TOTAL	0	0	0	0	0	10	N/A
Science							
Marine and Wetland Studies	23	33	42	39	37	34	47.8%
TOTAL	23	33	42	39	37	34	47.8%
Degree Seeking	104	159	181	231	294	331	218.3%
Non-Degree Seeking	1,112	1,230	621	350	146	172	-84.5%
ENROLLMENT TOTAL	1,216	1,389	802	581	440	503	-58.6%
Strategic Plan Alignment							

**UNDERGRADUATE MAJOR BY AVERAGE AGE
FALL SEMESTERS 2005-2010**

COLLEGE	2005	2006	2007	2008	2009	2010
Business						
Accounting	23	22	22	22	22	22
Economics (BA)	----	----	----	----	21	22
Economics (BS)	23	21	22	21	21	22
Finance	22	21	21	22	22	22
Management	21	20	21	21	21	21
Marketing	21	21	21	21	21	21
Resort Tourism Management	20	20	20	20	20	20
College Average Age	21	21	21	21	21	21
Education						
Early Childhood Education	22	22	22	22	22	22
Elementary Education	23	23	22	22	22	22
Middle Level Education	25	24	24	23	23	22
Physical Education	21	21	21	21	21	21
Special Education	23	23	22	22	22	23
College Average Age	23	22	22	21	22	22
Humanities & Fine Arts						
Art Studio	23	22	22	22	21	21
Communication	----	21	21	21	21	21
Dramatic Arts	22	22	21	20	20	20
English	22	22	22	23	23	22
Graphic Design	----	----	----	----	----	21
History	22	22	22	22	22	22
Music	22	22	22	21	21	22
Musical Theatre	20	20	20	20	20	20
Philosophy	22	24	24	26	24	22
Politics	22	22	22	22	23	23
Spanish	24	23	22	25	24	24
Theatre Arts	----	----	----	----	----	19
College Average Age	22	22	22	22	22	22
Science						
Biochemistry	----	----	----	----	----	21
Biology	20	20	20	20	21	21
Chemistry	21	21	20	21	21	20
Computer Science	22	21	21	21	22	22
*Exercise & Sport Science	----	----	----	20	20	20
*Health Promotion	21	21	21	22	22	22
Information Systems	----	----	----	----	----	23
Marine Science	20	20	20	20	20	20
Math	20	21	20	21	21	21
Physics	----	20	19	20	20	21
Psychology	22	21	22	22	22	21
*Recreation Sport Management	----	21	21	21	21	21
Sociology	25	25	23	24	24	24
College Average Age	21	21	21	21	21	21
University						
**Interdisciplinary Studies	31	32	31	31	33	30
Undeclared	19	19	19	19	19	19
Non-Degree Seeking	24	25	25	25	22	21
Coastal Average Age	22	21	21	21	21	21

*Major moved from the College of Education to the College of Science July 1, 2009.

**Major moved from College of Humanities and Fine Arts to the University College July 1, 2009.

**AVERAGE SIZE OF LECTURE CLASSES
BY DISCIPLINE AND LEVEL**

Discipline	2008		2009		2010	
	Lower Div.	Upper Div.	Lower Div.	Upper Div.	Lower Div.	Upper Div.
College of Business Administration						
Business Administration	41.3	36.2	40.4	36.5	37.8	32.8
College Average	41.3	36.2	40.4	36.5	37.8	32.8
College of Education						
Physical Education	19.9	17.9	18.8	23.3	18.4	17.3
Teacher Education	22.4	18.1	23.8	16.8	24.8	17.9
College Average	22.4	18.1	23.8	16.8	24.8	17.9
College of Humanities and Fine Arts						
Art	21.3	15.6	20.4	15.9	22.7	13.2
English	21.5	18.7	20.4	19.6	20.6	21.1
Foreign Languages	20.2	11.8	20.3	11.7	19.6	11.5
Geography	37.5	17.0	39.4	18.0	37.9	0.0
Graphic Design	--	--	--	--	10.6	12.0
History	38.4	21.8	37.4	22.6	34.7	24.2
Music	26.6	10.3	30.2	13.4	25.9	14.0
Philosophy/Religion	28.7	22.7	27.5	23.2	24.4	22.4
Politics	33.3	20.4	29.2	20.3	26.5	18.0
Theatre	23.4	10.6	21.7	10.7	23.0	12.1
College Average	27.9	16.5	27.4	17.3	24.6	14.9
College of Science						
Biology	55.1	25.3	54.6	29.8	58.7	29.5
Chemistry	24.5	19.5	21.1	24.6	22.4	18.7
Computer Science	23.8	10.7	23.7	14.9	22.5	18.0
**Exercise Sport Science	30.5	15.6	31.5	19.6	31.8	25.1
**Health Promotion	27.5	27.2	33.2	23.7	31.0	20.8
Math	32.0	9.3	31.4	11.1	33.5	10.0
Marine Science	52.7	29.3	44.2	30.9	42.9	29.4
Physics	37.6	4.0	34.6	9.5	31.7	5.5
Psychology	38.3	34.4	32.7	30.6	32.7	30.1
**Recreation Sports Mgmt.	28.4	21.4	31.0	23.4	29.5	24.5
Sociology	37.4	34.7	29.0	24.5	31.3	28.0
College Average	35.3	21.0	33.4	22.1	33.5	21.8
University Courses	23.6	5.2	24.9	4.7	27.6	10.0
University Average	27.9	23.6	27.1	23.6	27.0	23.0

* Exercise Sport Science started 08/SP

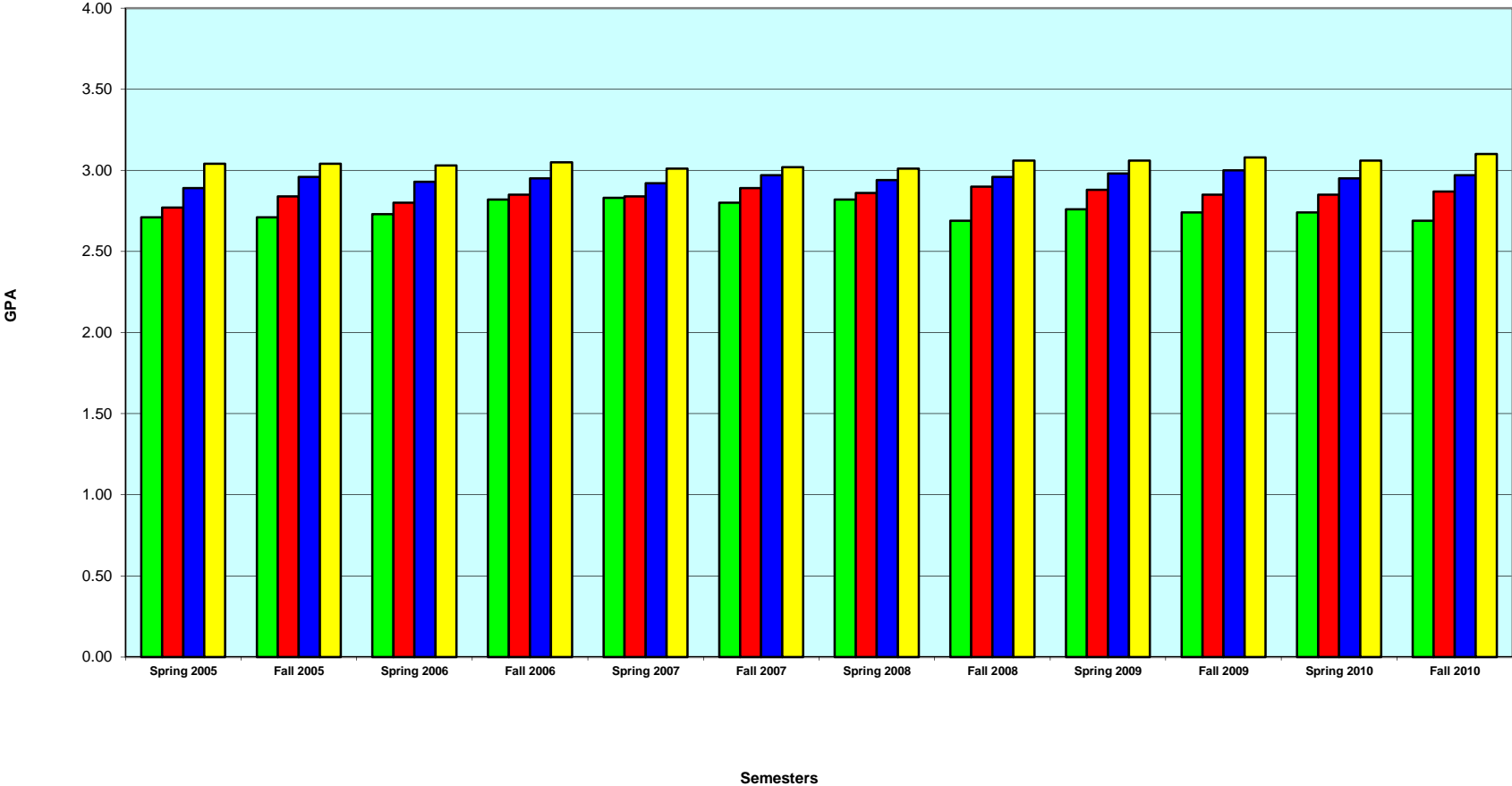
**Major moved from the College of Education to the College of Science July 1, 2009.

**AVERAGE GRADE POINT RATIO
BY CLASS
2002-2010**

Semester	Freshman		Sophomore		Junior		Senior		Total	
	Sem.	Cum.	Sem.	Cum.	Sem.	Cum.	Sem.	Cum.	Sem.	Cum.
Spring 2002	2.70	2.81	2.74	2.79	2.94	2.89	3.10	2.98	2.87	2.87
Fall 2002	2.63	2.66	2.75	2.83	2.89	2.90	3.09	3.02	2.81	2.83
Spring 2003	2.62	2.69	2.69	2.78	2.92	2.92	3.07	3.00	2.82	2.85
Fall 2003	2.68	2.70	2.73	2.80	2.94	2.96	3.09	3.04	2.83	2.85
Spring 2004	2.65	2.74	2.64	2.72	2.88	2.91	3.03	3.03	2.79	2.84
Fall 2004	2.61	2.63	2.74	2.81	2.91	2.92	3.09	3.05	2.81	2.83
Spring 2005	2.66	2.71	2.67	2.77	2.87	2.89	3.08	3.04	2.82	2.85
Fall 2005	2.70	2.71	2.73	2.84	2.90	2.96	3.06	3.04	2.83	2.86
Spring 2006	2.67	2.73	2.75	2.80	2.91	2.93	3.09	3.03	2.86	2.87
Fall 2006	2.80	2.82	2.77	2.85	2.92	2.95	3.10	3.05	2.89	2.91
Spring 2007	2.72	2.83	2.78	2.84	2.91	2.92	3.04	3.01	2.87	2.90
Fall 2007	2.79	2.80	2.82	2.89	2.97	2.97	3.05	3.02	2.89	2.90
Spring 2008	2.74	2.82	2.77	2.86	2.96	2.94	3.10	3.01	2.89	2.91
Fall 2008	2.66	2.69	2.81	2.90	2.95	2.96	3.08	3.06	2.85	2.89
Spring 2009	2.68	2.76	2.78	2.88	2.96	2.98	3.13	3.06	2.89	2.92
Fall 2009	2.72	2.74	2.78	2.85	2.95	3.00	3.09	3.08	2.87	2.90
Spring 2010	2.64	2.74	2.77	2.85	2.89	2.95	3.05	3.06	2.84	2.91
Fall 2010	2.65	2.69	2.74	2.87	2.90	2.97	3.13	3.10	2.83	2.88

Note: Does not include non-degree seeking students.

**AVERAGE CUMULATIVE GRADE POINT RATIO BY CLASS
2005-2010**



■ Freshman ■ Sophomore ■ Junior ■ Senior

**GRADE DISTRIBUTION
BY DISCIPLINE
FALL 2010**

Discipline	A		B+		B		C+		C		D+		D		F		S	U	W	WF	Total # Of Grades	Avg. GPA
	(4.0)	(3.5)	(3.0)	(2.5)	(2.0)	(1.5)	(1.0)	(0.0)														
Anthropology	36	33%	10	9%	19	18%	5	5%	13	12%	3	3%	8	7%	8	7%	0	0	6	0	108	2.81
Art Design	33	38%	16	18%	19	22%	6	7%	9	10%	0	0%	1	1%	0	0%	0	0	3	0	87	3.32
Art Education	34	63%	3	6%	3	6%	4	7%	5	9%	0	0%	0	0%	2	4%	0	0	3	0	54	3.44
Art History	131	26%	28	6%	115	23%	34	7%	83	17%	11	2%	36	7%	27	5%	0	0	34	1	500	2.73
Art Studio	263	47%	94	17%	98	17%	14	2%	30	5%	3	1%	7	1%	12	2%	0	0	40	0	561	3.42
Astronomy	20	29%	8	12%	10	15%	10	15%	6	9%	2	3%	2	3%	4	6%	0	0	6	0	68	2.90
Bioinformatics	26	36%	6	8%	10	14%	2	3%	10	14%	0	0%	2	3%	14	19%	0	0	2	0	72	2.60
Biology	913	32%	322	11%	460	16%	230	8%	324	11%	83	3%	128	5%	179	6%	0	0	195	1	2,835	2.89
Bus. Admin.	825	21%	414	11%	933	24%	337	9%	620	16%	85	2%	145	4%	205	5%	1	0	350	0	3,915	2.78
Chemistry	258	22%	112	10%	217	18%	80	7%	164	14%	32	3%	58	5%	83	7%	0	1	169	0	1,174	2.70
Chinese	3	17%	0	0%	2	11%	2	11%	1	6%	0	0%	0	0%	0	0%	0	0	10	0	18	3.13
Communication	364	37%	113	11%	286	29%	76	8%	77	8%	6	1%	16	2%	23	2%	0	0	32	1	994	3.20
Computer Sci.	519	43%	87	7%	188	16%	43	4%	114	10%	10	1%	42	4%	92	8%	0	0	102	1	1,198	3.04
Economics	146	16%	47	5%	187	21%	65	7%	190	21%	22	2%	57	6%	71	8%	0	0	96	5	886	2.46
Educ - Early Childhood	327	70%	63	14%	49	11%	3	1%	2	0%	1	0%	2	0%	5	1%	12	0	1	0	465	3.74
Educ - Elementary	133	63%	29	14%	19	9%	3	1%	6	3%	0	0%	0	0%	1	0%	17	0	3	0	211	3.72
Educ - Learning Disab.	91	82%	10	9%	9	8%	0	0%	0	0%	0	0%	0	0%	0	0%	0	0	1	0	111	3.87
Educ - Middle Level	40	75%	7	13%	3	6%	0	0%	0	0%	0	0%	0	0%	0	0%	3	0	0	0	53	3.87
Education	391	57%	60	9%	102	15%	21	3%	37	5%	4	1%	4	1%	33	5%	0	0	34	0	686	3.40
English Comp.	505	23%	260	12%	577	26%	162	7%	305	14%	31	1%	74	3%	162	7%	0	0	128	7	2,211	2.78
English Lit.	464	29%	193	12%	380	24%	115	7%	171	11%	7	0%	46	3%	82	5%	0	0	140	1	1,599	2.99
Exercise and Sport Science	316	34%	114	12%	207	22%	67	7%	114	12%	21	2%	26	3%	21	2%	0	0	40	0	926	3.09
French	70	33%	10	5%	47	22%	8	4%	29	13%	2	1%	11	5%	11	5%	0	0	26	1	215	2.90
Geography	99	17%	36	6%	146	26%	45	8%	114	20%	14	2%	33	6%	43	8%	0	0	38	0	568	2.56
Geology	2	22%	2	22%	3	33%	0	0%	2	22%	0	0%	0	0%	0	0%	0	0	0	0	9	3.11
German	7	11%	6	10%	7	11%	7	11%	10	16%	3	5%	8	13%	6	10%	0	0	9	0	63	2.22
Golf Management	160	35%	21	5%	54	12%	2	0%	25	5%	1	0%	14	3%	0	0%	170	0	6	2	455	3.39
Health Promotion	318	28%	185	16%	277	24%	105	9%	103	9%	23	2%	26	2%	39	3%	7	0	47	1	1,131	3.05

GRADE DISTRIBUTION BY DISCIPLINE, FALL 2010 (CONT'D)

Discipline	A (4.0)		B+ (3.5)		B (3.0)		C+ (2.5)		C (2.0)		D+ (1.5)		D (1.0)		F (0.0)		S	U	W	WF	Total # Of Grades	Avg. GPA
	History	529	23%	198	9%	470	21%	158	7%	347	15%	60	3%	122	5%	141	6%	1	0	248	2	2,276
Honors	52	48%	15	14%	25	23%	3	3%	2	2%	2	2%	0	0%	3	3%	0	0	6	0	108	3.43
Interdisciplinary Studies	10	31%	1	3%	2	6%	1	3%	1	3%	0	0%	0	0%	0	0%	0	0	2	0	17	3.60
Italian	45	141%	10	31%	26	81%	4	13%	11	34%	2	6%	5	16%	4	13%	0	0	2	0	109	3.11
Japanese	6	19%	3	9%	6	19%	2	6%	2	6%	1	3%	3	9%	3	9%	0	0	6	0	32	2.54
Journalism	78	26%	40	13%	99	33%	24	8%	21	7%	3	1%	5	2%	9	3%	0	0	25	0	304	3.08
Latin	11	29%	10	26%	3	8%	4	11%	5	13%	0	0%	0	0%	2	5%	0	0	3	0	38	3.09
Marine Sci.	365	24%	201	13%	321	21%	170	11%	193	13%	33	2%	49	3%	62	4%	0	0	111	2	1,507	2.89
Mathematics	339	11%	151	5%	446	15%	156	5%	446	15%	95	3%	212	7%	418	14%	0	0	732	3	2,998	2.14
Music	487	44%	69	6%	157	14%	36	3%	91	8%	9	1%	29	3%	39	4%	108	17	60	0	1,102	3.24
Music Educ.	65	68%	3	3%	12	13%	3	3%	7	7%	0	0%	0	0%	2	2%	0	0	4	0	96	3.57
Philosophy	241	30%	83	10%	152	19%	69	9%	100	12%	13	2%	26	3%	48	6%	0	0	75	0	807	2.91
Physical Education	96	42%	41	18%	49	21%	14	6%	8	3%	0	0%	0	0%	5	2%	4	0	12	0	229	3.41
Phys. Active Living Skills	741	79%	42	4%	66	7%	2	0%	14	1%	1	0%	5	1%	21	2%	0	0	42	5	939	3.73
Physics	243	30%	122	15%	133	16%	60	7%	72	9%	16	2%	18	2%	49	6%	0	0	96	0	809	2.99
Politics	322	18%	166	9%	405	23%	157	9%	275	15%	76	4%	85	5%	117	7%	0	0	175	10	1,788	2.62
Psychology	540	36%	130	9%	292	20%	80	5%	180	12%	31	2%	54	4%	63	4%	9	0	108	5	1,492	3.02
Recreation Sports Mgmt	123	19%	58	9%	176	27%	50	8%	133	20%	16	2%	39	6%	30	5%	0	0	33	0	658	2.68
Religion	101	22%	55	12%	106	23%	32	7%	66	15%	8	2%	18	4%	34	8%	0	0	30	2	452	2.74
Resort Tourism	95	50%	28	15%	33	17%	9	5%	10	5%	2	1%	1	1%	1	1%	0	0	12	0	191	3.48
ROTC	50	48%	5	5%	9	9%	3	3%	9	9%	0	0%	2	2%	2	2%	0	0	24	0	104	3.40
Sociology	219	25%	66	8%	243	28%	46	5%	138	16%	11	1%	42	5%	47	5%	1	0	54	1	868	2.81
Spanish	409	27%	229	15%	256	17%	145	9%	141	9%	44	3%	58	4%	75	5%	0	0	175	3	1,535	2.92
Statistics	62	14%	37	8%	121	27%	22	5%	60	13%	18	4%	46	10%	36	8%	0	0	43	0	445	2.46
Swain Scholars	5	100%	0	0%	0	0%	0	0%	0	0%	0	0%	0	0%	0	0%	0	0	0	0	5	4.00
Theatre	345	37%	101	11%	152	16%	44	5%	60	6%	9	1%	19	2%	49	5%	90	0	70	2	941	3.14
University	1,112	55%	194	10%	267	13%	60	3%	156	8%	13	1%	52	3%	89	4%	14	3	70	4	2,034	3.32
Women Studies	11	32%	3	9%	12	35%	1	3%	1	3%	1	3%	2	6%	0	0%	0	0	3	0	34	3.18
TOTAL	13,196	31%	4,317	10%	8,466	20%	2,801	7%	5,113	12%	828	2%	1,638	4%	2,472	6%	437	21	3,742	60	43,091	2.92

**CREDIT HOUR AND FTE PRODUCTION
BY DISCIPLINE
FALL 2009**

COLLEGE OF BUSINESS

DISCIPLINE	Credit Hours Produced	FTE's Produced
Accounting	3,306	220.4
Economics	3,207	213.8
Finance	1,584	105.6
Management	5,503	366.9
Marketing	3,105	207.0
Resort Tourism Mgmt	1,067	71.1
Graduate	402	33.5
Total	18,174	1218.3

COLLEGE OF EDUCATION

DISCIPLINE	Credit Hours Produced	FTE's Produced
Early Childhood Education	1,197	79.8
Elementary Education	735	49.0
Middle Level	144	9.6
Special Education	234	15.6
Teacher Education	3,618	241.2
Graduate	1,611	134.3
Total	7,539	529.5

**COLLEGE OF HUMANITIES &
FINE ARTS**

DISCIPLINE	Credit Hours Produced	FTE's Produced
Art	3,222	214.8
Communication	2,612	174.1
English	10,704	713.6
Foreign Language	6,666	444.4
History	6,489	432.6
Journalism	636	42.4
Music	2,433	162.2
Philosophy/Religion	3,966	264.4
Politics/Geography	6,243	416.2
Theatre	2,473	164.9
Graduate - ARTS	21	1.8
Graduate - HIST	3	0.3
Graduate - MUS	36	3.0
Graduate - PSCI	3	0.3
Total	45,507	3031.6

COLLEGE OF SCIENCE

DISCIPLINE	Credit Hours Produced	FTE's Produced
Biology	5,997	399.8
Chemistry	3,152	210.1
Computer Science	3,168	211.2
*Health/EXSS	5,958	397.2
Marine Science	3,337	222.5
Math/Statistics	9,494	632.9
*Physical Education	1,904	126.9
Physics	1,203	80.2
Psychology	4,444	296.3
*Recreation	1,166	77.7
Sociology	2,184	145.6
Graduate - BIOL	99	8.3
Graduate - CSCI	72	6.0
Graduate - MATH	6	0.5
Graduate - MSCI	145	12.1
Total	42,329	2827.3

Note: Credit hours and FTE's produced for University (UNIV) courses taught by administrative staff are excluded.

*Major moved from the College of Education to the College of Science July 1, 2009.

**CREDIT HOUR AND FTE PRODUCTION
BY DISCIPLINE
FALL 2010**

COLLEGE OF BUSINESS

<u>DISCIPLINE</u>	<u>Credit Hours Produced</u>	<u>FTE's Produced</u>
Accounting	2,826	188.4
Economics	2,742	182.8
Finance	1,350	90.0
Management	5,245	349.7
Marketing	2,954	196.9
Resort Tourism Mgmt	1,199	79.9
Graduate	441	36.8
Total	16,757	1124.5

COLLEGE OF EDUCATION

<u>DISCIPLINE</u>	<u>Credit Hours Produced</u>	<u>FTE's Produced</u>
Early Childhood Education	1,704	113.6
Elementary Education	870	58.0
Middle Level	273	18.2
Physical Education	1,634	108.9
Special Education	213	14.2
Teacher Education	2,595	173.0
Graduate	1,896	158.0
Total	9,185	643.9

**COLLEGE OF HUMANITIES &
FINE ARTS**

<u>DISCIPLINE</u>	<u>Credit Hours Produced</u>	<u>FTE's Produced</u>
Art	3,703	246.9
Communication	3,708	247.2
English	11,883	792.2
Foreign Language	6,314	420.9
History	7,426	495.1
Journalism	303	20.2
Music	2,432	162.1
Philosophy/Religion	3,927	261.8
Politics/Geography	7,128	475.2
Theatre	2,611	174.1
Graduate - ARTS	24	2.0
Graduate - ENGL	84	7
Graduate - MUS	10	0.8
		0.0
Total	49,553	3305.5

COLLEGE OF SCIENCE

<u>DISCIPLINE</u>	<u>Credit Hours Produced</u>	<u>FTE's Produced</u>
Biology	6,240	416.0
Chemistry	3,191	212.7
Computer Science	3,268	217.9
*Health/EXSS	6,451	430.1
Marine Science	3,309	220.6
Math/Statistics	10,971	731.4
Physics	1,029	68.6
Psychology	4,180	278.7
*Recreation	1,553	103.5
ROTC	107	7.1
Sociology	2,502	166.8
Graduate - BIOL	89	7.4
Graduate - CSCI	60	5.0
Graduate - MSCI	144	12.0
Total	43,094	2877.8

Note: Credit hours and FTE's produced for University (UNIV) courses taught by administrative staff are excluded.

*Major moved from the College of Education to the College of Science July 1, 2009.

**TRENDS IN STUDENT / FACULTY RATIO
FALL SEMESTERS 1991-2010**

YEAR	FTE STUDENTS	FTE FACULTY	RATIO of FTE STUDENT/ FTE FACULTY	CHANGE FROM PRECEDING YEAR	
				FTE STUDENTS	FTE FACULTY
1991	3,341	192.05	17.4	-1.6%	1.9%
1992	3,457	190.99	18.1	3.5%	-0.6%
1993	3,575	198.08	18.0	3.4%	3.7%
1994	3,646	207.63	17.6	2.0%	4.8%
1995	3,654	198.18 205.74 **	18.4 17.7 **	0.2%	-4.6%
1996	3,793	198.09 213.80 **	19.1 17.7 **	3.8%	0.0%
1997	3,874	225.44 *	17.2	2.1%	5.4%
1998	3,938	213.30	18.5	1.7%	-5.4%
1999	3,991	222.49	17.9	1.3%	4.3%
2000	4,101	228.64	17.9	2.8%	2.8%
2001	4,487	231.96	19.3	9.4%	1.5%
2002	5,095	264.02	19.3	13.6%	13.8%
2003	5,795	301.34	19.2	13.7%	14.1%
2004	6,141	320.38	19.2	6.0%	6.3%
2005	6,576	339.08	19.4	7.1%	5.8%
2006	6,944	361.45	19.2	5.6%	6.6%
2007	7,177	397.69	18.1	3.4%	10.0%
2008	7,610	435.50	17.5	6.0%	9.5%
2009	7,865	452.70	17.4	3.4%	3.9%
2010	8,302	493.95	16.8	5.6%	9.1%

* Methodology used in calculation of FTE faculty changed by CHE to ensure consistency between institutions.

** Recalculated FTE displayed for comparative purposes only.

**TOTAL UNDERGRADUATE DEGREES AWARDED BY MAJOR
BETWEEN
2005 AND 2010 ***

<u>MAJOR</u>	2005-06	2006-07	2007-08	2008-09	2009-10
<u>BUSINESS</u>					
Accounting	32	39	30	42	58
Economics (BS)	5	2	5	9	11
Finance	40	42	49	47	58
Management	104	119	122	130	160
Marketing	105	110	104	124	107
Resort Tourism Management	10	22	32	31	35
Total	296	334	342	383	429
<u>EDUCATION</u>					
Early Childhood Education	47	37	55	50	47
Elementary Education	38	37	40	24	39
Middle Level Education	2	1	3	6	14
Physical Education	34	24	21	34	29
Special Education	---	5	12	13	7
Total	121	104	131	127	136
<u>HUMANITIES AND FINE ARTS</u>					
Art Studio	20	34	28	42	24
Communication	2	25	39	77	75
Dramatic Arts	12	8	9	9	5
English	36	26	37	39	33
Graphic Design	---	---	---	---	8
History	54	38	55	35	43
Music	6	9	13	15	12
Musical Theatre	4	5	7	9	9
Philosophy	4	2	2	4	4
Politics	35	35	39	34	45
Spanish	10	6	4	5	6
Total	183	188	233	269	264
<u>SCIENCE</u>					
Biology	50	55	62	61	67
Chemistry	4	8	7	1	6
Computer Science	25	18	19	18	10
**Exercise & Sport Science	---	---	---	2	15
**Health Promotion	50	55	67	82	74
Information Systems	---	---	---	---	1
Marine Science	78	63	57	67	63
Math	6	13	7	6	7
Physics	---	---	---	1	1
Psychology	60	78	67	85	114
**Recreation Sports Management	---	24	19	46	42
Sociology	29	44	40	41	23
Total	302	358	345	410	423
<u>UNIVERSITY</u>					
***Interdisciplinary Studies	29	20	25	33	37
Total	29	20	25	33	37
GRAND TOTAL	931	1004	1076	1222	1289

*Based on IPEDS (July 1 - June 30)

**Major moved from the College of Education to the College of Science July 1, 2009.

***Major moved from College of Humanities and Fine Arts to the University College July 1, 2009.

**TOTAL GRADUATE DEGREES AWARDED BY MAJOR
BETWEEN
2005 AND 2010 ***

<u>MAJOR</u>	<u>2005-06</u>	<u>2006-07</u>	<u>2007-08</u>	<u>2008-09</u>	<u>2009-10</u>
<u>BUSINESS</u>					
Business Administration	---	---	13	20	13
Business Administration - Accounting	---	---	3	1	7
Total	0	0	16	21	20
<u>EDUCATION</u>					
Master of Arts in Teaching					
Art	5	8	6	7	7
English	1	6	5	5	4
Mathematics	3	4	1	1	3
Music	2	3	2	5	4
Science	2	9	10	5	7
Social Studies	13	18	12	12	17
Spanish	1	0	0	0	0
Master of Education					
Early Childhood Education	1	7	5	4	10
Elementary Education	12	11	8	15	10
Secondary Education					
English	0	1	3	1	0
Mathematics	1	3	4	2	0
Music	0	1	0	2	1
Natural Science	0	0	4	1	2
Social Studies	1	1	1	1	0
Education Technology	0	2	5	0	0
Total	42	74	66	61	65
<u>SCIENCE</u>					
Coastal and Marine Wetland Studies	4	1	4	13	7
Total	4	1	4	13	7
GRAND TOTAL	46	75	86	95	92

*Based on IPEDS (July 1 - June 30)

**TOTAL DEGREES AWARDED
BETWEEN
1974 AND 2010***

Associate in Arts (A.A.)	216
Associate in Science (A.S.)	226
A.S. Nursing	354
Bachelor of Arts (B.A.)	4,518
B.A. Education	2,368
B.A. Interdisciplinary Studies	1,087
Bachelor of Science (B.S.)	3,620
B.S. Business Administration	5,444
B.S. Education	308
B.S. Interdisciplinary Studies	183
B.S. Physical Education	696
MBA	57
M.Ed.	329
M.A.T.	238
M.S. Coastal Marine & Wetland	32
M.S. Instructional Technology	11
TOTAL	19,687

*1974 was the first year in which a baccalaureate degree was awarded at Coastal.

Faculty

Coastal Carolina University

Fact Book

Office of Institutional Research, Assessment and Analysis

Fall 2010



FACULTY
TABLE OF CONTENTS

Faculty Highlights.....	69
Summary of Employees Holding Faculty Rank.....	71
Faculty Profile by College	72
Faculty Profile by Academic Discipline, Fall 2009.....	74
Faculty Profile by Academic Discipline, Fall 2010.....	75
Profile of Full-Time Teaching Faculty by Rank	76
Rank and Degree of Full-Time Employees Holding Faculty Rank	77
Full-Time Faculty by College and Rank	78
FTE Teaching Faculty by College and Rank.....	79
Full-Time Faculty Nine-Month Salary Trends.....	80
Full-Time Faculty Average Salary Comparison by Rank.....	81
Student Credit Hours Taught by Full-Time Faculty	82
Student Credit Hours Taught by FTE Faculty	83

FACULTY HIGHLIGHTS

Fact Book, 2010

Faculty Profile

In Fall 2010 there were 367 full-time employees with faculty rank, which is an increase of 10% from 2009. Of the full-time faculty, 43% were women and 57% men.

Of full-time employees with faculty rank, 78% possessed terminal degrees and 56% were tenured. Of this same group: 19% were professors, 24% associate professors, 33% assistant professors and 24% instructors/other. Approximately 67% of FTE students were taught by full-time faculty.

Full-Time Faculty by College and Rank

In Fall 2010 each college had at least or more than 70% of their full-time teaching staff holding a rank of Assistant Professor or higher. The breakdown for each college is as follows: Wall College of Business (83%), Spadoni College of Education (88%), Edwards College of Humanities and Fine Arts (71%), College of Science (70%) and Kimbel Library (92%).

Strategic Plan Alignment

Strategy 1: Meeting the educational needs of students and community by increasing the number of full-time faculty as a percent of all faculty

From Fall 2009 to Fall 2010 the number of full-time teaching faculty increased by 40 teachers, resulting in a ratio of full- to part-time teaching faculty of 1.3:1. Although this ratio is equal to last year, maintaining this ratio during the current economic conditions speaks to Coastal Carolina University's commitment to the educational needs of students.

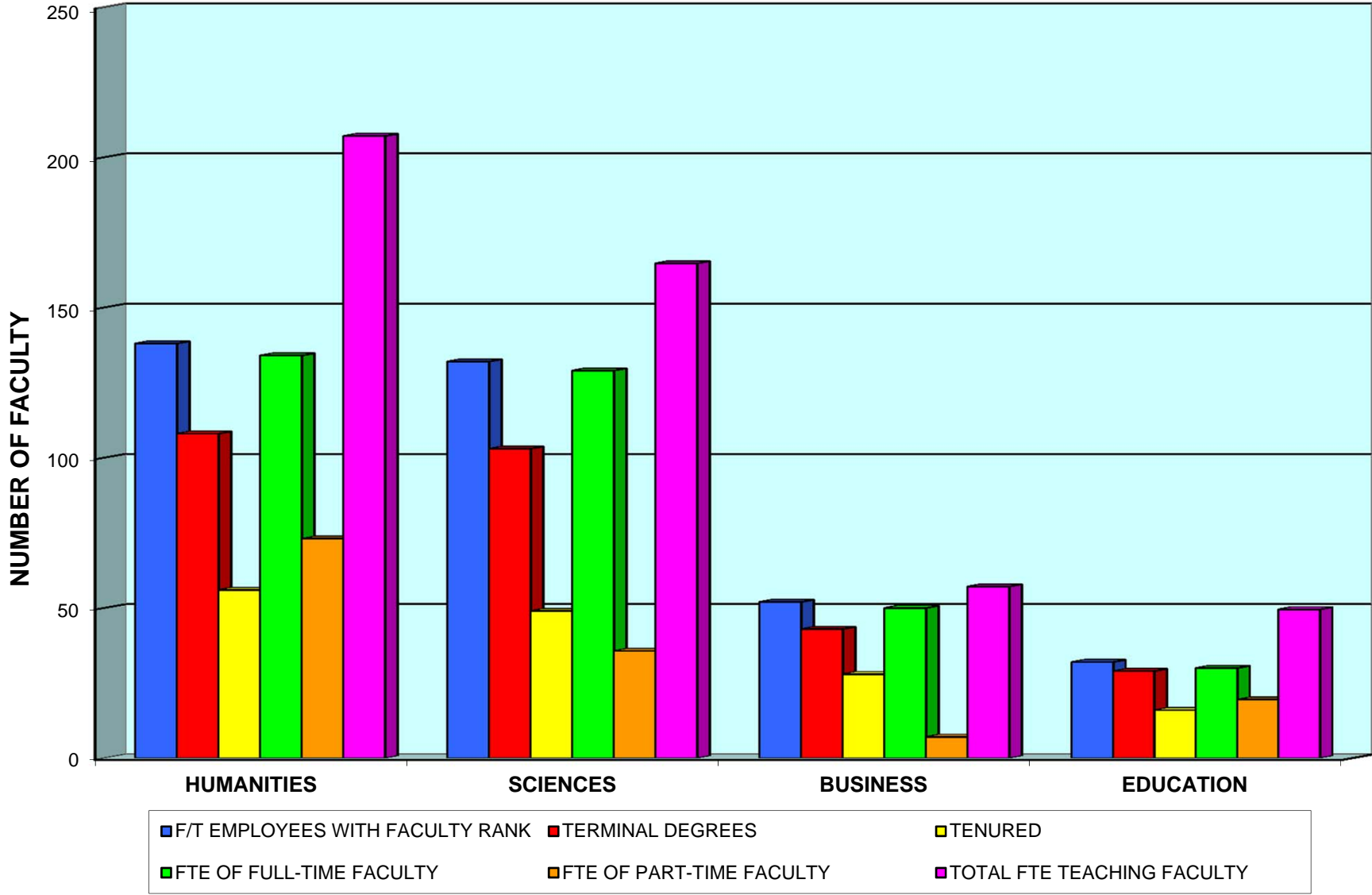
**SUMMARY OF EMPLOYEES
HOLDING FACULTY RANK
FALL 2010**

Full-Time Teaching Faculty	344
Faculty on Leave/Special Assignment	2
Part-Time Teaching Faculty	267
Total Teaching Faculty	613
Administrators Holding Faculty Rank	11
Librarians	10
Total Full-Time Employees Holding Faculty Rank	367
Total Faculty Employees	634
Total FTE of Full-Time Faculty	344.00
Total FTE of Part-Time Faculty	149.20
Total FTE	493.20

**COASTAL CAROLINA UNIVERSITY
FACULTY PROFILE BY COLLEGE, FALL 2010**

	BUSINESS	EDUCATION	HUMANITIES	SCIENCE	ACADEMIC COLLEGE SUB-TOTAL	LIBRARY/ OTHER	GRAND TOTAL
FULL-TIME EMPLOYEES W/FAC. RANK							
(INCLUDES DEANS, ADMIN., & FAC. ON LEAVE)							
MALE	38	11	73	86	208	3	211
FEMALE	14	21	65	46	146	10	156
TOTAL	52	32	138	132	354	13	367
TERMINAL DEGREES	43	29	108	103	283	2	285
% TERMINAL DEGREES	83%	91%	78%	78%	80%	15%	78%
TENURED (of eligible Tenure-Track)	28	16	56	49	149	6	155
% TENURED	65%	55%	57%	52%	56%	50%	56%
RANK							
PROFESSOR	15	2	28	20	65	3	68
ASSOCIATE PROFESSOR	16	14	28	28	86	3	89
ASSISTANT PROFESSOR	12	13	43	47	115	6	121
INSTRUCTOR/OTHER	9	3	39	37	88	1	89
TOTAL	52	32	138	132	354	13	367
PART-TIME FACULTY	14	50	95	66	225	42	267
FTE TEACHING FACULTY							
FTE OF FULL-TIME FACULTY	50.00	30.00	134.00	129.00	343.00	1.00	344.00
FTE OF PART-TIME FACULTY	7.14	19.53	73.04	35.69	135.40	13.79	149.20
TOTAL FTE TEACHING FACULTY	57.14	49.53	207.04	164.69	478.40	14.79	493.20
FTE STUDENTS							
TOTAL FTE STUDENTS TAUGHT	1124.48	643.93	3305.50	2877.82	7951.73	350.73	8302.46
FTE STUDENTS TAUGHT BY FT FAC.	954.75	402.10	2021.43	2107.62	5485.90	36.67	5522.57
% FTE STUDENTS TAUGHT BY FT FAC.	84.91%	62.44%	61.15%	73.24%	68.99%	10.46%	66.52%
STUDENT/FACULTY FTE RATIO	19.68	13.00	15.97	17.47	16.62	23.71	16.83

**COASTAL CAROLINA UNIVERSITY
FACULTY PROFILE BY COLLEGE
FALL SEMESTER, 2010**



**FACULTY PROFILE
BY ACADEMIC DISCIPLINE, FALL 2009**

DISCIPLINE	Number of Full-Time Faculty*			# FTE Teaching Faculty	# Terminal Degrees Full-Time Faculty**	% Terminal Degrees	# Masters Degrees Full-Time Faculty		Number Tenured	% Tenured ***
	M	F	T				%	Masters		
Art	5	10	15	18.74	14	93%	1	7%	7	54%
Biology	13	6	19	23.16	17	89%	2	11%	9	60%
Bus. & Econ.	37	11	48	53.93	41	85%	7	15%	24	62%
Chemistry	11	3	14	13.66	12	86%	2	14%	4	50%
Communication	4	3	7	9.24	5	71%	2	29%	2	40%
Computer Sci.	8	3	11	15.32	8	73%	3	27%	3	38%
English/Jour.	13	19	32	50.43	25	78%	7	22%	13	68%
Foreign Lang.	5	9	14	27.45	7	50%	7	50%	5	71%
Geography	1	0	1	2.74	0	0%	1	100%	0	0%
Health Prom./Exercise Sci.	5	4	9	19.54	8	89%	1	11%	4	50%
History	11	4	15	18.73	13	87%	2	13%	10	77%
Marine Sci./Geology	13	5	18	18.25	16	89%	2	11%	10	71%
Math./Stat.	15	8	23	26.74	13	57%	10	43%	4	36%
Music	10	4	14	20.80	11	79%	3	21%	7	58%
Physical Education	1	2	3	7.81	2	67%	1	33%	1	50%
Physics/Astron.	3	2	5	6.00	4	80%	1	20%	2	50%
Politics	7	2	9	15.72	8	89%	1	11%	5	56%
Psychology	6	4	10	14.07	10	100%	0	0%	5	50%
Recreation	1	3	4	4.50	4	100%	0	0%	1	50%
Religion & Philos.	6	2	8	12.98	8	100%	0	0%	2	33%
Soc./Anthropology	4	3	7	7.50	7	100%	0	0%	2	29%
Teacher Educ.	10	18	28	38.29	26	93%	2	7%	13	50%
Theatre	4	5	9	14.15	7	78%	2	22%	4	57%
Other	0	2	2	12.94	2	100%	0	0%	2	100%
TOTAL	193	132	325	452.67	268	82%	57	18%	139	56%

* Includes Administrators (13), excludes Librarians (7) and faculty on leave and special assignments (3).

** Includes all terminal degrees whether or not in teaching area.

*** Percentage based on only faculty eligible for tenure (excludes visiting, lecturers, instructors)

**FACULTY PROFILE
BY ACADEMIC DISCIPLINE, FALL 2010**

DISCIPLINE	Number of Full-Time Faculty*			# FTE Teaching Faculty	# Terminal Degrees Full-Time Faculty**	% Terminal Degrees	# Masters Degrees Full-Time Faculty	% Masters	Number Tenured	% Tenured ***
	M	F	T							
Art/Graphic Design	6	8	14	18.98	14	100%	0	0%	7	58%
Biology	13	8	21	25.15	19	90%	2	10%	9	56%
Bus. & Econ.	38	14	52	57.14	43	83%	9	17%	28	67%
Chemistry	11	2	13	15.24	11	85%	2	15%	4	67%
Communication	4	5	9	12.24	5	56%	4	44%	3	60%
Computer Sci.	8	4	12	16.07	5	42%	7	58%	3	43%
English/Jour.	14	19	33	52.91	26	79%	7	21%	11	55%
Foreign Lang.	6	10	16	26.50	9	56%	7	44%	5	71%
Geography	1	1	2	3.49	0	0%	2	100%	0	0%
Health Prom./Exercise Sci.	4	7	11	22.29	9	82%	2	18%	4	44%
History	10	6	16	22.23	13	81%	3	19%	7	58%
Marine Sci./Geology	15	5	20	21.66	17	85%	3	15%	10	71%
Math./Stat.	16	8	24	27.74	13	54%	11	46%	5	45%
Music	11	4	15	20.28	11	73%	4	27%	9	69%
Physical Education	1	2	3	8.64	2	67%	1	33%	2	100%
Physics/Astron.	4	2	6	6.66	5	83%	1	17%	2	40%
Politics	10	3	13	21.05	12	92%	1	8%	6	46%
Psychology	7	4	11	13.65	11	100%	0	0%	7	64%
Recreation	3	3	6	6.50	5	83%	1	17%	1	20%
Religion & Philos.	7	3	10	15.48	9	90%	1	10%	3	38%
Soc./Anthropology	4	3	7	7.50	7	100%	0	0%	3	43%
Teacher Educ.	10	19	29	40.89	27	93%	2	7%	14	52%
Theatre	4	5	9	13.90	8	89%	1	11%	4	57%
Other	0	3	3	17.03	1	33%	2	67%	2	100%
TOTAL	207	148	355	493.20	282	79%	73	21%	149	57%

* Includes Administrators (11), excludes Librarians (10) and faculty on leave and special assignments (2).

** Includes all terminal degrees whether or not in teaching area.

*** Percentage based on only faculty eligible for tenure (excludes visiting, lecturers, instructors)

**PROFILE OF FULL-TIME TEACHING FACULTY
BY RANK, FALL 2010**

<u>RANK</u>	Doctoral/Terminal		Masters		<u>TOTAL</u>
	<u>MEN</u>	<u>WOMEN</u>	<u>MEN</u>	<u>WOMEN</u>	
Professor	43	15	0	0	58
Associate	52	31	1	0	84
Assistant	60	49	4	2	115
Instructor	0	0	9	7	16
Lecturer	14	11	19	29	73
TOTAL	169	106	33	38	346

NOTE: Includes faculty on leave and special assignment (2).
Excludes Administrators (11) and Librarians (10).

**RANK AND DEGREE OF
FULL-TIME EMPLOYEES HOLDING FACULTY RANK*
FALL 2010**

<u>DISCIPLINE</u>	Professor		Associate Professor		Assistant Professor		Instructor/ Lecturer		<u>Total</u>
	<u>T</u>	<u>M</u>	<u>T</u>	<u>M</u>	<u>T</u>	<u>M</u>	<u>T</u>	<u>M</u>	
Art/Graphic Design	4	0	3	0	5	0	2	0	14
Biology	4	0	5	0	7	0	3	2	21
Bus. & Econ.	15	0	16	0	12	0	0	9	52
Chemistry	1	0	3	0	3	0	4	2	13
Communication	2	0	1	0	2	0	0	4	9
Computer Science	1	0	1	0	3	2	0	5	12
English	5	0	5	0	9	1	7	6	33
Foreign Language	1	0	4	0	2	0	2	7	16
Geography	0	0	0	0	0	1	0	1	2
Health Prom/Exer Scie.	2	0	3	0	4	0	0	2	11
History	4	0	3	0	5	0	1	3	16
Library	1	2	0	1	0	6	0	0	10
Marine Science	6	0	4	0	4	0	3	3	20
Math	1	0	4	0	8	0	0	11	24
Music	6	0	2	1	3	1	0	2	15
Other	0	0	0	2	0	0	1	0	3
Physical Education	0	0	1	0	1	0	0	1	3
Physics	0	0	2	0	3	0	0	1	6
Politics	4	0	2	0	6	1	0	0	13
Psychology	3	0	4	0	4	0	0	0	11
Recreation	0	0	1	0	4	0	0	1	6
Religion/Philosophy	1	0	2	0	5	0	1	1	10
Sociology	1	0	1	0	5	0	0	0	7
Teacher Ed.	2	0	13	0	12	0	0	2	29
Theatre	1	0	4	0	2	0	1	1	9
TOTAL	65	2	84	4	109	12	25	64	365

*Includes Deans, Administrators, and Librarians (21). Excludes faculty on leave and special assignments (2).
T = Terminal degree , M = Masters degree.

**FULL-TIME FACULTY BY COLLEGE AND RANK
FALL SEMESTERS
2001-2010**

COLLEGE AND RANK*	2001	2002	2003	2004	2005	2006	2007	2008	2009	2010
Business Administration										
Professor	4	7	7	7	8	6	9	10	13	15
Associate	9	8	10	10	11	12	7	11	13	16
Assistant	6	8	10	12	14	16	22	18	14	12
Instructor/Other	0	2	2	3	0	1	3	7	8	9
Total	19	25	29	32	33	35	41	46	48	52
Education										
Professor	6	7	8	7	7	7	7	6	6	2
Associate	7	7	6	7	8	12	14	14	14	14
Assistant	7	8	9	15	15	13	15	18	19	13
Instructor/Other	7	4	3	3	3	3	1	4	5	3
Total	27	26	26	32	33	35	37	42	44	32
Humanities & Fine Arts										
Professor	20	22	22	23	22	25	23	29	29	28
Associate	20	18	18	21	25	24	23	23	27	28
Assistant	25	24	33	30	29	30	39	37	37	43
Instructor/Other	9	16	18	15	17	19	18	33	33	39
Total	74	80	91	89	93	98	103	122	126	138
Science										
Professor	14	17	17	18	18	15	17	15	16	20
Associate	19	21	20	21	25	25	23	20	23	28
Assistant	25	25	24	30	31	32	36	44	41	47
Instructor/Other	11	16	16	14	14	17	19	25	28	37
Total	69	79	77	83	88	89	95	104	108	132
Library										
Professor	0	1	1	2	2	2	2	3	3	3
Associate	5	4	5	3	3	2	2	3	3	3
Assistant	2	2	2	2	2	4	4	3	3	6
Instructor/Other	2	2	1	1	1	0	0	0	0	1
Total	9	9	9	8	8	8	8	9	9	13
GRAND TOTAL	198	219	232	244	255	265	284	323	335	367

*Includes Deans, Administrators, Librarians and faculty on leave and special assignments.

**FTE TEACHING FACULTY BY COLLEGE AND RANK
FALL SEMESTERS 2004-2010**

COLLEGE AND RANK	2004	2005	2006	2007	2008	2009	2010
Business Administration							
Professor	5.00	6.00	4.00	7.00	8.00	11.00	13.00
Associate	10.00	11.00	10.00	6.00	11.00	13.00	16.00
Assistant	12.00	14.00	15.00	22.00	18.00	14.00	12.00
Instructor / Lecturer	3.00	0.00	1.00	3.00	7.00	8.00	9.00
Other	6.60	7.42	10.80	12.71	12.08	7.93	7.14
Total	36.60	38.42	40.80	50.71	56.08	53.93	57.14
Education							
Professor	4.00	4.00	5.00	4.00	2.00	2.00	1.00
Associate	6.00	8.00	11.00	13.00	12.00	9.00	13.00
Assistant	15.00	15.00	13.00	15.00	18.00	12.00	13.00
Instructor / Lecturer	3.00	3.00	3.00	1.00	4.00	2.00	3.00
Other	23.88	26.39	31.47	32.69	34.14	13.29	19.53
Total	51.88	56.39	63.47	65.69	70.14	38.29	49.53
Humanities & Fine Arts							
Professor	18.00	19.00	21.00	20.00	24.00	26.00	26.00
Associate	21.00	24.00	22.00	23.00	21.00	25.00	26.00
Assistant	30.00	29.00	30.00	39.00	37.00	37.00	43.00
Instructor / Lecturer	15.00	17.00	19.00	18.00	33.00	33.00	39.00
Other	45.95	48.35	49.65	61.03	60.21	69.98	73.04
Total	129.95	137.35	141.65	161.03	175.21	190.98	207.04
Science							
Professor	14.00	14.00	13.00	15.00	12.00	15.00	17.00
Associate	20.00	24.00	24.00	21.00	18.00	26.00	28.00
Assistant	30.00	31.00	32.00	36.00	44.00	48.00	47.00
Instructor / Lecturer	14.00	14.00	17.00	19.00	25.00	31.00	37.00
Other	21.50	20.05	22.37	19.34	21.58	36.54	35.69
Total	99.50	103.05	108.37	110.34	120.58	156.54	164.69
University							
Professor	0.25	0.25	0.50	0.25	0.25	0.25	0.00
Associate	0.00	0.00	0.00	0.00	0.00	0.25	0.00
Assistant	0.00	0.00	0.25	0.25	0.25	0.50	0.50
Instructor / Lecturer	0.00	0.00	0.00	0.00	0.00	0.00	1.00
Other	2.20	3.63	6.42	9.41	12.99	11.95	13.29
Total	2.45	3.88	7.16	9.91	13.49	12.94	14.79
GRAND TOTAL	320.39	339.08	361.45	397.69	435.50	452.67	493.20

**FULL-TIME FACULTY NINE-MONTH SALARY TRENDS
2003-2010**

	Average Salary		Average Salary		Average Salary		Average Salary		Average Salary		Average Salary		Average Salary			
	#	2003-04	#	2004-05	#	2005-06	#	2006-07	#	2007-08	#	2008-09	#	2009-10	#	2010-11

BY RANK

Professor	43	\$62,559	41	\$69,248	43	\$71,845	43	\$73,065	47	\$78,667	48	\$82,159	55	\$83,036	58	\$82,640
Associate	52	\$53,936	57	\$56,374	67	\$59,385	68	\$61,752	64	\$63,887	65	\$68,617	75	\$68,397	84	\$68,877
Assistant	75	\$44,887	87	\$48,248	89	\$51,395	90	\$53,684	112	\$57,786	117	\$58,005	111	\$57,468	115	\$56,232
Instructor	28	\$30,698	27	\$32,564	25	\$34,470	26	\$37,008	22	\$41,300	21	\$44,910	18	\$46,076	16	\$45,593

BY GENDER

08

Female	76	\$44,208	83	\$47,765	86	\$51,630	87	\$53,970	95	\$57,317	102	\$60,413	101	\$62,498	104	\$62,280
Male	122	\$52,139	129	\$55,541	138	\$58,434	140	\$60,281	150	\$64,811	149	\$66,992	158	\$67,043	169	\$66,852

BY DEGREE

Doctoral/ Terminal	159	\$51,816	165	\$55,864	181	\$58,689	192	\$60,839	212	\$64,134	221	\$66,598	235	\$66,922	250	\$66,531
Masters	39	\$38,001	47	\$40,676	43	\$43,752	35	\$41,531	33	\$47,588	30	\$47,523	24	\$49,097	23	\$49,660

TOTAL	198	\$49,095	212	\$52,497	224	\$55,822	227	\$57,862	245	\$61,905	251	\$64,277	259	\$65,270	273	\$65,110
--------------	------------	-----------------	------------	-----------------	------------	-----------------	------------	-----------------	------------	-----------------	------------	-----------------	------------	-----------------	------------	-----------------

Notes: Excludes Administrators (11), librarians (10), faculty on leave (2), and lecturers (73).

**FULL-TIME FACULTY AVERAGE SALARY COMPARISON
BY RANK, FALL SEMESTERS 2003-2008**

CATEGORY	PROFESSOR	ASSOCIATE	ASSISTANT	INSTRUCTOR	ALL RANKS
Fall 2003					
Coastal Carolina	\$62,559	\$53,936	\$44,887	\$30,698	\$49,095
South Carolina	\$62,104	\$52,626	\$43,922	\$36,798	\$48,779
Southern States (SREB)*	\$63,010	\$52,237	\$44,103	\$35,825	\$49,260
National**	\$81,415	\$60,530	\$51,288	\$38,953	\$62,800
Fall 2004					
Coastal Carolina	\$69,248	\$56,374	\$48,248	\$32,564	\$52,497
South Carolina	\$65,020	\$55,208	\$46,566	\$39,510	\$51,523
Southern States (SREB)*	\$65,572	\$54,595	\$46,029	\$36,761	\$51,318
National**	\$85,629	\$63,408	\$54,533	\$39,726	\$65,875
Fall 2005					
Coastal Carolina	\$71,845	\$59,385	\$51,395	\$34,470	\$55,822
South Carolina	\$68,794	\$58,249	\$49,580	\$40,210	\$54,216
Southern States (SREB)*	\$67,480	\$56,313	\$48,871	\$37,070	\$53,449
National**	\$89,442	\$65,817	\$56,801	\$41,153	\$68,454
Fall 2006					
Coastal Carolina	\$73,231	\$62,123	\$53,996	\$37,009	\$58,227
South Carolina	\$69,020	\$57,637	\$49,673	\$43,586	\$53,744
Southern States (SREB)*	\$69,463	\$58,243	\$49,521	\$39,735	\$54,937
National**	\$83,124	\$64,759	\$55,868	\$41,815	\$64,580
Fall 2007					
Coastal Carolina	\$78,667	\$63,887	\$57,786	\$41,300	\$61,905
South Carolina	\$72,555	\$59,439	\$51,038	\$44,602	\$54,925
Southern States (SREB)*	\$72,976	\$60,271	\$50,262	\$39,967	\$56,062
National**	\$87,248	\$68,083	\$58,270	\$43,713	\$67,533
Fall 2008					
Coastal Carolina	\$82,159	\$68,617	\$58,005	\$44,910	\$64,277
South Carolina	\$74,213	\$60,118	\$51,041	\$44,615	\$55,216
Southern States (SREB)*	\$75,325	\$61,721	\$51,686	\$41,546	\$57,308
National**	\$91,755	\$71,299	\$60,759	\$44,863	\$70,953

* Southern Regional Educational Board (SREB) average salaries reported for public baccalaureate institutions (SREB VI).

** CUPA averages for noncollective bargaining institutions, as published in CUPA's National Faculty Salary Survey by discipline and rank in public colleges and universities.

**STUDENT CREDIT HOURS TAUGHT
BY FULL-TIME FACULTY
FALL TERMS 2008-2010**

<u>Discipline</u>	2008			2009			2010		
	<u># Full-Time Faculty</u>	<u>Student Credit Hours Taught by Full-Time Faculty</u>	<u>Average Credit Hours Taught by Full-Time Faculty</u>	<u># Full-Time Faculty</u>	<u>Student Credit Hours Taught by Full-Time Faculty</u>	<u>Average Credit Hours Taught by Full-Time Faculty</u>	<u># Full-Time Faculty</u>	<u>Student Credit Hours Taught by Full-Time Faculty</u>	<u>Average Credit Hours Taught by Full-Time Faculty</u>
College of Business Administration									
Business Administration	44.00	13,252.00	301.18	46.00	15,213.00	330.72	50.00	14,211.00	284.22
College Total	44.00	13,252.00	301.18	46.00	15,213.00	330.72	50.00	14,211.00	284.22
College of Education									
Physical Education	3.00	902.00	300.67	3.00	819.00	273.00	27.00	4,986.00	184.67
Teacher Education	22.00	3,648.00	165.82	25.00	4,317.00	172.68	3.00	627.00	209.00
College Total	25.00	4,550.00	182.00	28.00	5,136.00	183.43	30.00	5,613.00	187.10
College of Humanities and Fine Arts									
Art	13.00	2,313.00	177.92	15.00	2,565.00	171.00	11.00	2,494.00	226.73
Communication	6.00	1,694.00	282.33	7.00	2,006.00	286.57	9.00	2,784.00	309.33
English	30.00	6,792.00	226.40	32.00	6,828.00	213.38	31.00	7,017.00	226.35
Foreign Languages	15.00	3,816.00	254.40	14.00	3,498.00	249.86	16.00	3,818.00	238.63
Geography	1.00	627.00	627.00	1.00	537.00	537.00	2.00	1,014.00	507.00
Graphic Design							3.00	270.00	90.00
History	11.00	3,723.00	338.45	14.00	4,500.00	321.43	17.00	4,744.00	279.06
Music	13.00	940.00	72.31	13.00	1,095.00	84.23	15.00	1,210.00	80.67
Philosophy/Religion	9.00	2,846.00	316.22	9.00	2,409.00	267.67	10.00	2,406.00	240.60
Politics	9.00	2,848.00	316.44	9.00	2,628.00	292.00	12.00	3,124.00	260.33
Theatre	8.00	1,234.00	154.25	9.00	1,065.00	118.33	9.00	1,244.00	138.22
College Total	115.00	26,833.00	233.33	123.00	27,131.00	220.58	135.00	30,125.00	223.15
College of Science									
Biology	17.00	3,611.00	212.41	17.00	3,939.00	231.71	20.00	4,545.00	227.25
Chemistry	13.00	3,077.00	236.69	13.00	2,971.00	228.54	13.00	2,652.00	204.00
Computer Science	11.00	1,415.00	128.64	11.00	1,868.00	169.82	12.00	2,159.00	179.92
*Health Promotion/Exercise Science	7.00	1,987.00	283.86	9.00	2,230.00	247.78	11.00	2,692.00	244.73
Math	22.00	8,148.00	370.36	23.00	7,997.00	347.70	24.00	9,432.00	393.00
Marine Science	17.00	3,232.00	190.12	18.00	3,431.00	190.61	20.00	2,634.00	131.70
Physics	6.00	858.00	143.00	6.00	886.00	147.67	7.00	850.00	121.43
Psychology	8.00	2,686.00	335.75	10.00	2,861.00	286.10	10.00	2,690.00	269.00
*Recreation Sports Management	4.00	1,146.00	286.50	4.00	1,055.00	263.75	6.00	1,430.00	238.33
Sociology	5.00	1,807.00	361.40	7.00	2,040.00	291.43	7.00	2,352.00	336.00
College Total	110.00	27,967.00	254.25	118.00	29,278.00	248.12	130.00	31,436.00	241.82
Other	--	--	--	--	--	--	1.00	358.00	358.00
University Total	294.00	72,602.00	246.95	315.00	76,758.00	243.68	346.00	81,743.00	236.25

*Major moved from the College of Education to the College of Natural and Applied Sciences June 1, 2009.

**STUDENT CREDIT HOURS TAUGHT
BY FTE FACULTY
FALL TERMS 2008-2010**

Discipline	2008			2009			2010		
	# FTE Faculty	Student Credit Hours Taught by FTE Faculty	Average Credit Hours Taught by FTE Faculty	# FTE Faculty	Student Credit Hours Taught by FTE Faculty	Average Credit Hours Taught by FTE Faculty	# FTE Faculty	Student Credit Hours Taught by FTE Faculty	Average Credit Hours Taught by FTE Faculty
College of Business Administration									
Business Administration	56.08	18,175.00	324.11	53.93	18,174.00	337.01	57.14	16,757.00	293.27
College Total	56.08	18,175.00	324.11	53.93	18,174.00	337.01	57.14	16,757.00	293.27
College of Education									
Physical Education	7.23	1,755.00	242.64	7.81	1,904.00	243.67	8.64	1,634.00	189.03
Teacher Education	42.45	7,500.00	176.68	38.29	7,539.00	196.88	40.89	7,551.00	184.67
College Total	49.68	9,255.00	186.28	46.11	9,443.00	204.81	49.53	9,185.00	185.43
College of Humanities and Fine Arts									
Art/Graphic Design	15.49	2,658.00	171.59	18.74	3,243.00	173.10	18.98	3,727.00	196.36
Communication	8.74	2,519.00	288.25	9.24	2,612.00	282.65	12.24	3,708.00	303.02
English/Journalism	46.55	10,864.00	233.40	50.43	11,340.00	224.87	51.67	11,967.00	231.62
Foreign Languages	27.70	7,029.00	253.76	27.45	6,666.00	242.88	27.74	6,617.00	238.50
Geography	2.25	1,179.00	525.17	2.74	1,353.00	493.26	3.49	1,713.00	490.83
History	17.47	6,537.00	374.10	18.73	6,492.00	346.59	22.23	7,426.00	334.13
Music	18.48	2,232.00	120.78	20.80	2,469.00	118.68	20.28	2,442.00	120.44
Philosophy/Religion	11.99	3,665.00	305.72	12.98	3,966.00	305.55	15.48	3,927.00	253.71
Politics	16.55	5,351.00	323.26	15.72	4,893.00	311.28	21.05	5,415.00	257.24
Theatre	9.99	1,912.00	191.35	14.15	2,473.00	174.82	13.90	2,611.00	187.88
College Total	175.21	43,946.00	250.82	190.98	45,507.00	238.29	207.04	49,553.00	239.34
College of Science									
Biology	22.89	5,754.00	251.34	23.16	6,096.00	263.25	25.15	6,329.00	251.69
Chemistry	14.00	3,235.00	231.14	13.66	3,152.00	230.68	15.24	3,191.00	209.37
Computer Science	15.73	2,879.00	183.01	15.32	3,240.00	211.54	16.07	3,328.00	207.13
*Health Promotion/ EXSS	15.96	4,890.00	306.31	19.54	5,958.00	304.90	22.29	6,451.00	289.44
Math	25.24	9,423.00	373.38	26.74	9,500.00	355.34	27.74	10,971.00	395.57
Marine Science	18.66	3,708.00	198.71	18.25	3,482.00	190.80	21.66	3,453.00	159.42
Physics	6.42	1,045.00	162.90	6.00	1,203.00	200.63	6.66	1,029.00	154.41
Psychology	12.65	4,608.00	364.33	14.07	4,444.00	315.92	13.65	4,180.00	306.18
*Recreation	4.50	1,266.00	281.46	4.50	1,166.00	259.23	6.50	1,553.00	239.00
ROTC							2.24	107.00	47.75
Sociology	5.00	1,807.00	361.40	7.50	2,184.00	291.28	7.50	2,502.00	333.69
College Total	141.04	38,615.00	273.78	148.72	40,425.00	271.82	164.69	43,094.00	261.67
University/Other	13.49	3,513.00	260.45	12.94	3,830.00	295.89	14.79	5,261.00	355.69
University Total	435.50	113,504.00	260.63	452.67	117,379.00	259.30	493.20	123,850.00	251.12

*Major moved from the College of Education to the College of Natural and Applied Sciences June 1, 2009.

Resources

Coastal Carolina University

Fact Book

Office of Institutional Research, Assessment and Analysis

Fall 2010



RESOURCES

TABLE OF CONTENTS

Resources Highlights	87
Annual Tuition and Residence Hall Fees	89
SC Public Institutions Academic Year Costs Tuition and Required Fees, 2010-11 Academic Year Comparison of In-State to Out-of-State	90
Total Financial Aid Received by Coastal Students from All Sources	92
Buildings Inventory.....	94

RESOURCES HIGHLIGHTS

Fact Book, 2010

The Resources section includes Coastal Carolina University's annual tuition and residence hall fees, a comparison of in-state and out-of-state South Carolina senior public institution costs, total financial aid disbursements to Coastal Carolina University students by source, and the University's building inventory.

Strategic Plan Progression

Strategy 1: Meeting the educational needs of students

Goal 1.3. Increase need-based aid offered to students

From 2008-2009 to 2009-2010 need-based funding at Coastal Carolina University increased by 61.1%. Need-based funding in the preceding number is based on Pell Grant, ACG/SMART, supplemental grants and college work study.

Strategy 2: Ensuring student success &

Strategy 3: Ensuring faculty and staff success

In 2010, multiple physical resources were completed on the University's campus. These projects include: Adkins Field House (LEED Gold), University Boulevard extension and Athletic Grounds Equipment Storage facility. Also, the University received approval for phase II construction of the Student Recreation/Convocation center and the Hitting Facility.



COASTAL CAROLINA
UNIVERSITY

www.coastal.edu

ANNUAL TUITION AND RESIDENCE HALL FEES
Academic Years 1992 - 2010

<u>YEAR</u>	<u>IN-STATE</u>		<u>OUT-OF-STATE</u>		<u>Residence Hall Fees</u>
	<u>Full-Time Student</u>	<u>Per Credit Hour</u>	<u>Full-Time Student</u>	<u>Per Credit Hour</u>	
1992-93	\$2,270	\$96	\$5,674	\$240	\$2,390
1993-94	\$2,470	\$103	\$6,280	\$262	\$2,500
1994-95	\$2,710	\$115	\$7,000	\$295	\$2,640
1995-96	\$2,800	\$120	\$7,470	\$312	\$2,720
1996-97	\$2,910	\$125	\$7,840	\$330	\$4,300 *
1997-98	\$3,100	\$130	\$8,320	\$348	\$4,640 *
1998-99	\$3,220	\$135	\$8,790	\$370	\$4,800 *
1999-00	\$3,340	\$140	\$9,280	\$385	\$4,970 *
2000-01	\$3,500	\$147	\$9,810	\$408	\$5,240 *
2001-02	\$3,770	\$159	\$10,680	\$445	\$5,450 *
2002-03	\$4,350	\$182	\$11,760	\$491	\$5,610 *
2003-04	\$5,190	\$215	\$12,870	\$540	\$5,770 *
2004-05	\$6,100	\$250	\$14,200	\$595	\$5,970 *
2005-06	\$6,860	\$290	\$15,100	\$630	\$6,280 *
2006-07	\$7,500	\$315	\$16,190	\$675	\$6,690 *
2007-08	\$7,600	\$317	\$16,590	\$691	\$6,680 *
2008-09	\$8,650	\$360	\$18,090	\$754	\$7,080 *
2009-10	\$8,950	\$373	\$18,770	\$782	\$7,200 *
2010-11	\$9,390	\$382	\$20,270	\$830	\$7,350 *

*Includes required board plan and health service fee.

**SC PUBLIC INSTITUTIONS ACADEMIC YEAR COSTS
TUITION AND REQUIRED FEES, 2010-11 ACADEMIC YEAR
COMPARISON OF IN-STATE TO OUT-OF-STATE**

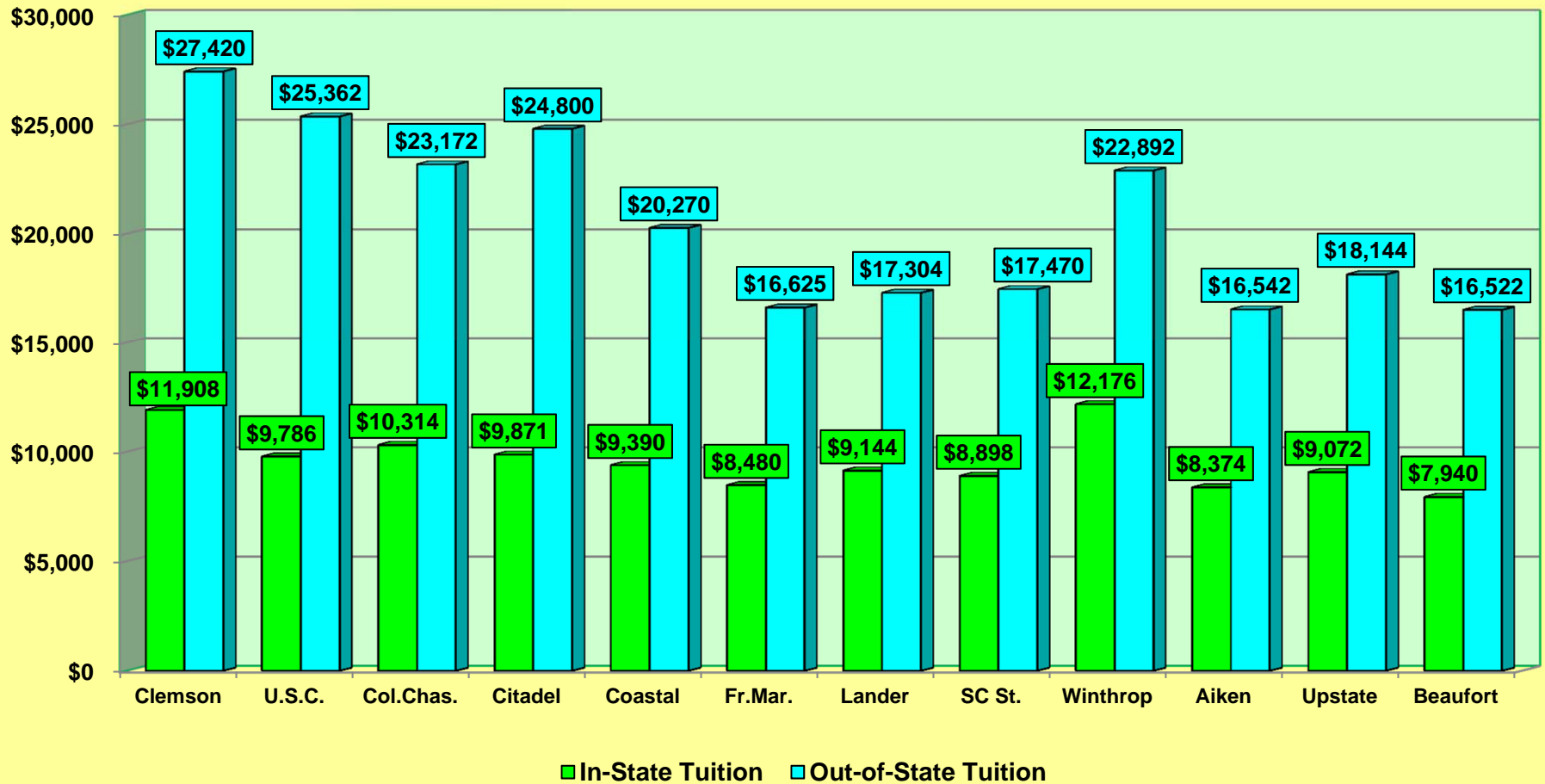
	<u>IN-STATE</u>	<u>OUT-OF-STATE</u>
CITADEL	\$9,871	\$24,800
CLEMSON	\$11,908	\$27,420
COASTAL CAROLINA	\$9,390	\$20,270
COLLEGE OF CHARLESTON	\$10,314	\$23,172
FRANCIS MARION	\$8,480	\$16,625
LANDER	\$9,144	\$17,304
SC STATE	\$8,898	\$17,470
USC - AIKEN	\$8,374	\$16,542
USC - BEAUFORT	\$7,940	\$16,522
USC - COLUMBIA	\$9,786	\$25,362
USC - UPSTATE	\$9,072	\$18,144
WINTHROP	\$12,176	\$22,892

*Source: SC Commission on Higher Education

SC PUBLIC UNIVERSITIES

Undergraduate Tuition, 2010-2011

Comparison, In-State & Out-of-State



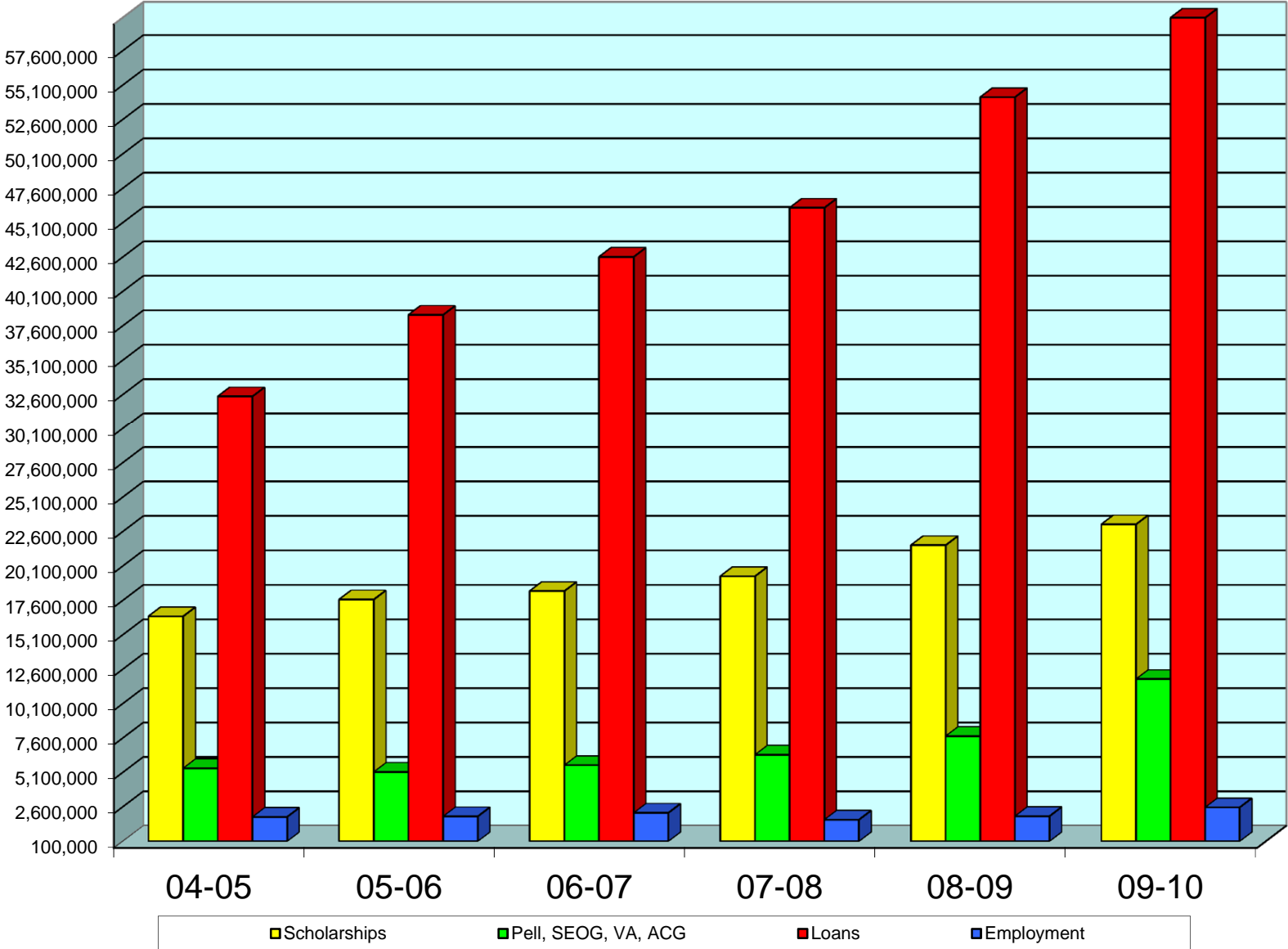
**TOTAL FINANCIAL AID
RECEIVED BY COASTAL STUDENTS
FROM ALL SOURCES**

Federal Financial Aid	2004-2005	2005-2006	2006-2007	2007-2008	2008-2009	2009-10	5-Year % Change
Pell Grant	4,321,145	4,231,475	4,228,209	4,899,483	6,214,063	10,530,900	143.71%
ACG/SMART	---	---	269,938	499,547	514,818	839,730	NA
Supplemental Grants	373,937	283,748	503,965	362,864	575,274	521,684	39.51%
College Work Study	383,370	201,844	221,523	216,483	254,986	285,740	-25.47%
Perkins Loans	297,012	249,273	262,630	212,103	182,174	125,671	-57.69%
Bank Loans	26,442,196	28,986,749	29,498,164	30,707,506	37,624,861	49,225,282	86.16%
VA Benefits*	716,072	629,000	632,862	633,063	444,504	---	NA
TOTAL FEDERAL AID	32,533,732	34,582,089	35,617,291	37,531,049	45,810,680	61,529,007	89.12%
Other Aid							
Scholarships - Found. & Comm.	745,627	817,803	995,286	1,110,276	1,302,927	1,527,222	104.82%
Athletics Scholarships	3,239,927	3,979,256	4,525,450	4,743,585	5,010,118	5,238,282	61.68%
Other Scholarships	12,466,182	12,877,911	12,767,145	13,510,757	15,303,231	16,362,209	31.25%
Inst. Employment	1,491,868	1,572,601	1,790,930	1,172,607	1,434,539	2,264,825	51.81%
Inst. Work Study	---	137,194	158,967	283,958	239,266	16,358	NA
Private Loans	5,739,588	9,167,000	12,861,903	15,266,746	16,419,194	12,311,589	114.50%
TOTAL OTHER AID	23,683,192	28,551,765	33,099,681	36,087,929	39,709,275	37,720,485	59.27%
TOTAL FINANCIAL AID	56,216,924	63,133,854	68,716,972	73,618,978	85,519,955	99,249,492	76.55%
Unduplicated count of students receiving aid	4,860	5,287	5,552	5,843	6,437	7,086	45.80%

Strategic Plan Alignment

* VA Benefits are no longer counted towards students' financial aid beginning 2009-10.

FINANCIAL AID DISBURSEMENTS 2004-05 TO 2009-10



BUILDINGS INVENTORY
Fall 2010

Building Name	Gross Area Square Feet	Net E & G Square Feet	Classrooms		Laboratories		Replacement Cost of Buildings*
			Number	Stations	Number	Stations	
Alumni House	1,320	1,200	---	---	---	---	\$128,925
Arcadia Hall	11,781	7,789	---	---	---	---	\$1,789,662
Atheneum Hall	10,194	5,951	---	---	---	---	\$2,566,647
Baseball Facilities	9,547	7,463	---	---	---	---	\$894,052
Burroughs Chapin Marine and Wetland	74,700	62,843	---	---	1	25	\$8,227,509
Coastal Band Hall	6,800	4,881	1	110	---	---	\$732,954
Coastal Band Hall #2	1,440	1,250	---	---	---	---	\$59,169
Coastal Science Center	69,384	44,966	13	649	4	145	\$7,983,115
Custodial/ Assistant Strength	9,220	7,717	---	---	---	---	\$988,911
The Commons	14,020	0	---	---	---	---	\$3,718,784
Edwards College of Humanities	111,632	64,389	25	1,318	17	388	\$26,478,028
Evergreen	2,850	1,790	---	---	---	---	\$267,139
Brook Stadium	31,256	22,266	---	---	---	---	\$14,391,047
Foundation Center	30,560	10,292	---	---	---	---	\$3,871,900
Greenhouse	2,250	1,140	---	---	---	---	\$238,524
Hampton Hall	8,175	5,833	---	---	---	---	\$1,517,020
Indigo House	2,701	2,086	---	---	---	---	\$307,909
Kearns Hall	32,949	19,144	10	370	2	49	\$6,834,711
Kimbel Library	46,678	23,057	---	---	---	---	\$10,862,225
Kingston Hall	12,698	5,043	---	---	---	---	\$1,574,265
Physical Plant Maintenance Shop	7,950	7,932	---	---	---	---	\$655,131
Eldred E. Prince Building	31,001	20,623	8	276	---	---	\$6,627,004
Public Safety House	4,038	2,000	---	---	---	---	\$288,037
Quail Creek Club House	7,836	5,012	---	---	---	---	\$858,944
Sands Hall	12,142	5,291	---	---	---	---	\$1,790,057
Science Building	41,700	24,932	6	316	10	239	\$10,292,479
Singleton Building	32,635	20,132	---	---	---	---	\$5,992,318
Student Center	26,884	9,614	---	---	---	---	\$7,159,672
Student Health Center	7,704	4,616	---	---	---	---	\$1,240,515
Bill Baxley Hall	29,761	7,830	---	---	---	---	\$7,395,846
E. Craig Wall Sr. Building	101,069	52,996	20	1,163	5	209	\$23,946,976
Wheelwright Auditorium	32,783	14,247	---	---	---	---	\$12,137,613
Williams Brice PE Center	65,919	51,470	3	97	1	19	\$15,348,542
Winyah House	4,284	2,888	---	---	---	---	\$574,917
Procurement & Receiving Facility	18,490	15,211	---	---	---	---	\$3,698,000
Human Resources Office	5,753	4,047	---	---	---	---	\$4,771,562
Media and Athletic Storage	2,576	2,128	---	---	---	---	\$259,359
Physical Plant Grounds Equipment	4,000	3,225	---	---	---	---	\$337,014
Physical Plant Tractor/Pesticide Storage	1,240	100	---	---	---	---	\$123,554
Chemical Storage Building	492	363	---	---	---	---	\$93,019
Athletics Grounds Maintenance Building	3,840	3,481	---	---	---	---	\$165,000
Softball Facilities	1,028	784	---	---	---	---	\$82,028
Nichols Tennis Facility	236	200	---	---	---	---	\$37,397
Laurel Hall	1,716	1,357	---	---	---	---	\$182,714
Adkins Field House	62,561	33,490	---	---	---	---	\$11,900,000
Subtotal	997,793	593,069	86	4,299	40	1,074	\$209,390,194
Temporary Buildings	4,020	3,184	1	41	---	---	\$298,368
Subtotal	1,001,813	596,253	87	4,340	40	1,074	\$209,688,562
Higher Education Centers **	61,877	41,162	---	---	2	67	\$21,037,000
Subtotal E & G Space	1,063,690	637,415	87	4,340	42	1,141	\$230,725,562
Residence Halls	280,948	0	---	---	---	---	\$42,647,070
TOTAL	1,344,638	637,415	92	4,573	35	1,014	\$273,372,632

* Source: SC Commission on Higher Education

** Leased Property



Office of Institutional Research, Assessment and Analysis
Coastal Carolina University
P.O. Box 261954 • Conway, SC 29528-6054
www.coastal.edu