

Coastal Carolina University

# Fact Book

Office of Institutional Research, Assessment and Analysis



Fall 2011



# COASTAL CAROLINA UNIVERSITY

## OFFICE OF INSTITUTIONAL RESEARCH, ASSESSMENT AND ANALYSIS

### *FACT BOOK*

FALL 2011

The mission of the Office of Institutional Research, Assessment and Analysis is to provide a centralized source for data collection, data analysis, data archives, and data management activities, and to provide support for assessment activities that inform and strengthen Coastal Carolina University's strategic planning process. In line with the goal of informing the strategic planning process, the *Fact Book* is published annually to provide relevant information to the University community. Furthermore, the *Fact Book* provides metrics and benchmarks to show the University's progression toward meeting the goals of the University's *Strategic Plan*. Items which meet these goals are noted in the highlights portion of each section.

The *Fact Book* addresses the following requirements of the Southern Association of Colleges and Schools Commission on Colleges, *Principles of Accreditation: Foundations for Quality Enhancement* (SACS 2010).

Core Requirement 2.5: The institution engages in ongoing, integrated, and institution-wide research-based planning and evaluation processes that (1) incorporate a systematic review of institutional mission, goals, and outcomes; (2) result in continuing improvement in institutional quality; and (3) demonstrate the institution is effectively accomplishing its mission. (Institutional Effectiveness)

Comprehensive Standard 3.3.1: The institution identifies expected outcomes, assesses the extent to which it achieves these outcomes, and provides evidence of improvement based on analysis of the results in each of the following area: (Institutional Effectiveness)

- 3.3.1.1 educational programs, to include student learning outcomes
- 3.3.1.2 administrative support services
- 3.3.1.3 educational support services
- 3.3.1.4 research within its educational mission, if appropriate
- 3.3.1.5 community/public service within its educational mission, if appropriate

**The *Fact Book* is in alignment with the following supporting key strategies and goals from the *Coastal Carolina University Strategic Plan*:**

Supporting Strategy 1: Improve Communication

Enhance Communication within Coastal Carolina University and among current and potential stakeholders.

Goal S1.1. Communication Effectiveness: Improve flow, efficiency, and effectiveness of communication throughout the University.

Supporting Strategy 2: Stronger Assessment and Accountability

Implement and maintain an environment of institutional effectiveness that is based on a culture of assessment, results in continuous improvement, and supports the University in effectively accomplishing its mission.

Goal S2.2. Documented Performance: Document and report relevant initiatives and performance outcomes that enable ongoing monitoring by campus members and outside stakeholders.



# TABLE OF CONTENTS

## ENROLLMENT

Enrollment Highlights .....	3
Summer Enrollment Trends .....	5
Fall and Spring Enrollment Trends.....	6
Fall Enrollment Trends by Race .....	7
Fall Enrollment Trends by Gender and Full-time/Part-time Status.....	8
Fall Enrollment Trends by Level.....	9
Fall Enrollment Trends by Level and Full-time/Part-time Status .....	10
Residency Classification of Students for Fee Payment Purposes .....	11
Geographic Distribution by South Carolina Counties.....	12
Geographic Distribution by State or Country .....	13

## FIRST-TIME STUDENTS

First-time Students Highlights .....	17
New Student Orientation Attendance .....	19
Applications, Acceptances, and Enrollments.....	20
New Freshmen, Scholastic Aptitude Test (SAT) and American College Test (ACT) Scores .....	21
New Freshmen, High School Grade Point Average.....	22
New Freshmen, High School Course Pre-requisites .....	23
New Freshmen Retention .....	24
First-time Full-time Freshmen One Year Retention .....	25
Profile of First-time Full-time Freshmen .....	29

## FIRST-TIME TRANSFER STUDENTS

First-time Transfer Students Highlights .....	35
Migration of Transfer Students to Coastal Carolina University .....	37
Migration of Transfer Students from Coastal Carolina University .....	38
New Transfer Student Retention.....	39
First-time Full-time Transfer Students One Year Retention .....	40
Profile of First-time Full-time Transfer Students .....	43

## **ACADEMICS**

Academic Highlights .....	49
Undergraduate Major by Class .....	51
Undergraduate Enrollment by Major .....	52
Graduate Enrollment by Major .....	53
Undergraduate Major by Average Age .....	54
Average Size of Lecture Classes by Discipline and Level .....	55
Average Grade Point Ratio by Class .....	56
Grade Distribution by Discipline .....	58
Credit Hour Production and Full Time Equivalent (FTE) Production by Discipline, Fall 2010 .....	60
Credit Hour Production and FTE Production by Discipline, Fall 2011 .....	61
Trends in Student/Faculty Ratio .....	62
Total Undergraduate Degrees Awarded by Major .....	63
Total Graduate Degrees Awarded by Major and/or Discipline .....	64
Total Degrees Awarded .....	65

## **FACULTY**

Faculty Highlights .....	69
Summary of Employees Holding Faculty Rank .....	71
Faculty Profile by College .....	72
Faculty Profile by Academic Discipline, Fall 2010 .....	74
Faculty Profile by Academic Discipline, Fall 2011 .....	75
Profile of Full-time Teaching Faculty by Rank .....	76
Rank and Degree of Full-time Employees Holding Faculty Rank .....	77
Full-time Faculty by College and Rank .....	78
FTE Teaching Faculty by College and Rank .....	79
Full-time Faculty Nine-Month Salary Trends .....	80
Full-time Faculty Average Salary Comparison by Rank .....	81
Student Credit Hours Taught by Full-time Faculty .....	82
Student Credit Hours Taught by FTE Faculty .....	83

## **RESOURCES**

Resources Highlights .....	87
Annual Tuition and Residence Hall Fees .....	89
S.C. Public Institutions Academic Year Costs Tuition and Required Fees, 2011-2012 Academic Year Comparison of In-State to Out-of-State .....	90
Total Financial Aid Received by Coastal Carolina University Students from All Sources .....	92
Buildings Inventory .....	94

# Enrollment

Coastal Carolina University

---

# Fact Book

Office of Institutional Research, Assessment and Analysis



Fall 2011





# ENROLLMENT

## TABLE OF CONTENTS

Enrollment Highlights .....	3
Summer Enrollment Trends.....	5
Fall and Spring Enrollment Trends .....	6
Fall Enrollment Trends by Race .....	7
Fall Enrollment Trends by Gender and Full-time/Part-time Status .....	8
Fall Enrollment Trends by Level .....	9
Fall Enrollment Trends by Level and Full-time/Part-time Status .....	10
Residency Classification of Students for Fee Payment Purposes.....	11
Geographic Distribution by South Carolina Counties .....	12
Geographic Distribution by State or Country .....	13



## ENROLLMENT HIGHLIGHTS

*Fact Book, 2011*

### Enrollment

- The total Fall 2011 enrollment was 9,084, representing an increase of 378 students (4%) from Fall 2010. The full-time equivalent (FTE) for Fall 2011 increased 5% to 8,720 during the same period.
- The total Fall 2011 undergraduate enrollment was 8,517, representing an increase of 314 students (4%) from Fall 2010.
- Undergraduate degree and non-degree-seeking students comprised 94% of the total Fall 2011 enrollment with graduate degree and non-degree-seeking students accounting for 6% of the student population. Graduate degree-seeking students have increased 112% since Fall 2007.
- Since 1998, the number of students attending May, Summer I, and Summer II semesters has grown from 2,529 to 3,648 (44%). In the same period, the number of credit hours taken increased from 10,056 to 14,635 (46%).

### Demographics

- Female students made up 53% of the total undergraduate enrollment and 69% of the total graduate enrollment for Fall 2011.
- In Fall 2011, 92% of all undergraduate students were enrolled full-time.
- Fifty-four percent (54%) of all students enrolled are from the state of South Carolina. In Fall 2011, the largest percentage of out-of-state students came from New Jersey (8%), New York (7%) and Maryland (6%). International student enrollment accounted for 134 (1%) students.
- In Fall 2011, all South Carolina counties were represented in the total student enrollment with Horry County representing the largest number of students at 2,351 (48%) followed by Richland at 301 (6%), Georgetown at 280 (6%) and Greenville at 168 (3%) counties.
- The most prominent ethnic groups represented in Fall 2011 were White/non-Hispanic (73%) and Black/African American (19%).

**The *Enrollment* section is in alignment with the following supporting key strategies and goals from the *Coastal Carolina University Strategic Plan*:**

Strategy 1: Meeting the Educational Needs of Students and Community

Expand degree and non-degree program offerings and formats while maintaining quality in all programs.

Goal 1.3. Improved Access to Education: Enhance accessibility of education at Coastal Carolina University while maintaining quality standards.

Goal 1.4. Enhanced Global Perspective: Create a campus culture that generates greater awareness of the global environment and promotes increased participation in and exposure to the world.

Strategy 2: Ensuring Student Success

Increase retention and graduation rates by supporting programs and services that enrich the student learning and living environment and broaden the diversity of students seeking Coastal Carolina University as their choice for educational advancement.

Goal 2.1. Talented & Diverse Student Body: Implement a comprehensive enrollment strategy to recruit and retain an academically talented and diverse student body.

Strategy 4: Ensuring Financial Viability and Managed Growth

Ensure responsible financial management practices which are based on a clear commitment to enrollment growth and consistent with the mission of the University.

Goal 4.1. Comprehensive Financial Plan: Develop, implement, and communicate a comprehensive financial plan that includes projections of tuition, state support, grant support, and philanthropy.

## SUMMER ENROLLMENT TRENDS 1998-2011

<u>Year</u>	<u>May Semester</u>		<u>Summer I Semester</u>		<u>Summer II Semester</u>		<u>Total</u>	
	# Students	# Hours	# Students	# Hours	# Students	# Hours	# Students	# Hours
<b>1998</b>	426	1,485	1,246	5,134	857	3,437	2,529	10,056
<b>1999</b>	405	1,354	1,290	5,379	1,024	3,990	2,719	10,723
<b>2000</b>	500	1,783	1,386	5,804	1,098	4,311	2,984	11,898
<b>2001</b>	567	2,131	1,802	7,271	1,632	6,015	4,001	15,417
<b>2002</b>	653	2,377	1,993	7,194	1,233	4,333	3,879	13,904
<b>2003</b>	765	2,787	1,650	6,606	897	3,643	3,312	13,036
<b>2004</b>	748	2,632	1,607	6,626	992	3,958	3,347	13,216
<b>2005</b>	687	2,368	1,530	6,093	1,026	4,345	3,243	12,806
<b>2006</b>	617	2,185	1,596	6,428	1,126	4,443	3,339	13,056
<b>2007</b>	714	2,459	1,565	6,061	1,103	4,213	3,382	12,733
<b>2008</b>	686	2,505	1,360	5,334	1,075	4,118	3,121	11,957
<b>2009</b>	682	2,619	1,370	5,498	996	3,884	3,048	12,001
<b>2010</b>	819	3,132	1,801	7,147	1,155	4,587	3,775	14,866
<b>2011</b>	845	3,286	1,612	6,444	1,191	4,905	3,648	14,635



## FALL AND SPRING SEMESTER ENROLLMENT TRENDS 1990-2011

FALL SEMESTER			SPRING SEMESTER		
Term	Headcount	FTE	Term	Headcount	FTE
1990	4,080	3,396	1991	3,562	2,875
1991	3,983	3,340	1992	3,488	2,849
1992	4,023	3,455	1993	3,558	2,946
1993*	4,453	3,610	1994*	3,771	3,043
1994	4,542	3,646	1995	3,976	3,150
1995	4,468	3,656	1996	3,849	3,303
1996	4,477	3,793	1997	4,036	3,352
1997	4,408	3,874	1998	3,999	3,565
1998	4,556	3,938	1999	4,150	3,650
1999	4,615	3,991	2000	4,163	3,635
2000	4,653	4,101	2001	4,529	3,908
2001	4,965	4,487	2002	4,853	4,280
2002	5,980	5,095	2003	5,597	4,841
2003	6,780	5,795	2004	5,998	5,302
2004	7,021	6,141	2005	6,222	5,562
2005	7,613	6,576	2006	6,571	5,828
2006	8,049	6,944	2007	6,854	6,173
2007	7,872	7,177	2008	7,007	6,429
2008	8,154	7,610	2009	7,417	6,800
2009	8,360	7,865	2010	7,760	7,200
2010	8,706	8,302	2011	8,005	7,506
2011	9,084	8,720			

\* Date of official counts changed to Oct. 30 for Fall and March 30 for Spring.

**FALL ENROLLMENT TRENDS  
BY RACE  
FALL SEMESTERS 2006-2011**

**UNDERGRADUATE**

	<u>FALL 2006</u>	<u>FALL 2007</u>	<u>FALL 2008</u>	<u>FALL 2009</u>	<u>FALL 2010</u>	<u>FALL 2011</u>	<u>5-YEAR % CHANGE</u>
<b><u>ETHNICITY</u></b>							
Hispanic/Latino	100	115	144	219	257	273	173.0%
<b><u>RACE</u></b>							
American Indian/Alaskan Native	30	34	43	40	28	33	10.0%
Asian	79	93	98	77	64	60	-24.1%
Black/African American	789	824	970	1,168	1,452	1,640	107.9%
Native Hawaiian/Pacific Islander	---	---	---	6	11	16	N/A
White	5,477	5,828	6,160	6,171	6,124	6,174	12.7%
Two or More Races	---	---	---	92	147	183	N/A
Non-Resident Alien	109	92	78	102	97	117	7.3%
Unknown	76	84	80	45	23	21	-72.4%
<b>TOTAL</b>	<b>6,660</b>	<b>7,070</b>	<b>7,573</b>	<b>7,920</b>	<b>8,203</b>	<b>8,517</b>	<b>27.9%</b>

**GRADUATE**

	<u>FALL 2006</u>	<u>FALL 2007</u>	<u>FALL 2008</u>	<u>FALL 2009</u>	<u>FALL 2010</u>	<u>FALL 2011</u>	<u>5-YEAR % CHANGE</u>
<b><u>ETHNICITY</u></b>							
Hispanic	13	4	8	2	2	8	-38.5%
<b><u>RACE</u></b>							
American Indian/Alaskan Native	4	2	1	1	3	2	-50.0%
Asian	6	10	2	4	1	2	-66.7%
Black/African American	361	129	58	47	52	62	-82.8%
Native Hawaiian/Pacific Islander	---	---	---	1	1	2	N/A
White, non-Hispanic	961	649	505	370	427	467	-51.4%
Two or More Races	---	---	---	1	3	2	N/A
Non-Resident Alien	2	4	5	7	12	17	750.0%
Unknown	42	4	2	7	2	5	-88.1%
<b>TOTAL</b>	<b>1,389</b>	<b>802</b>	<b>581</b>	<b>440</b>	<b>503</b>	<b>567</b>	<b>-59.2%</b>

Note: Institutions required to use new Integrated Postsecondary Education Data System (IPEDS) racial/ethnic categories for reporting.

**FALL ENROLLMENT TRENDS  
BY GENDER AND FULL-TIME/PART-TIME STATUS  
FALL SEMESTERS 2007-2011**

**UNDERGRADUATE**

	Male		Female		Total
	#	%	#	%	
<b>Fall 2007</b>					
Full-time	3,057	43.2%	3,395	48.0%	6,452
Part-time	279	3.9%	339	4.8%	618
<b>Total</b>	<b>3,336</b>	<b>47.2%</b>	<b>3,734</b>	<b>52.8%</b>	<b>7,070</b>
<b>Fall 2008</b>					
Full-time	3,281	43.3%	3,602	47.6%	6,883
Part-time	284	3.8%	406	5.4%	690
<b>Total</b>	<b>3,565</b>	<b>47.1%</b>	<b>4,008</b>	<b>52.9%</b>	<b>7,573</b>
<b>Fall 2009</b>					
Full-time	3,342	42.2%	3,796	47.9%	7,138
Part-time	358	4.5%	424	5.4%	782
<b>Total</b>	<b>3,700</b>	<b>46.7%</b>	<b>4,220</b>	<b>53.3%</b>	<b>7,920</b>
<b>Fall 2010</b>					
Full-time	3,520	42.9%	4,019	49.0%	7,539
Part-time	296	3.6%	368	4.5%	664
<b>Total</b>	<b>3,816</b>	<b>46.5%</b>	<b>4,387</b>	<b>53.5%</b>	<b>8,203</b>
<b>Fall 2011</b>					
Full-time	3,673	43.1%	4,176	49.0%	7,849
Part-time	293	3.4%	375	4.4%	668
<b>Total</b>	<b>3,966</b>	<b>46.6%</b>	<b>4,551</b>	<b>53.4%</b>	<b>8,517</b>

**GRADUATE**

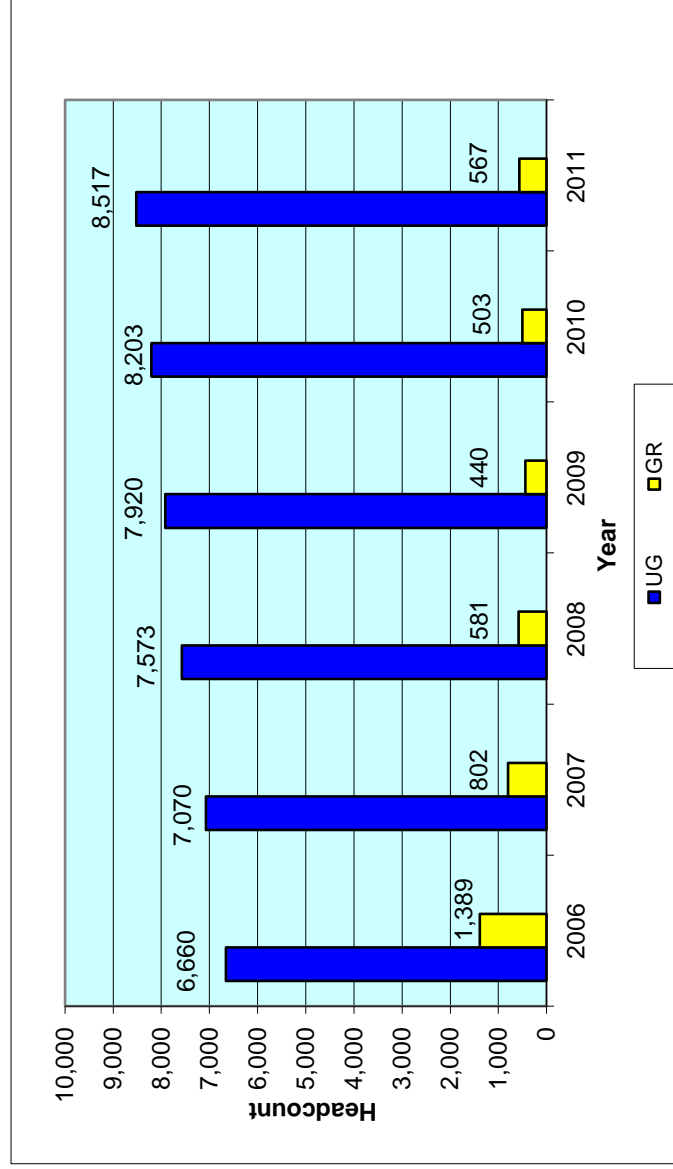
	Male		Female		Total
	#	%	#	%	
<b>Fall 2007</b>					
Full-time	34	4.2%	36	4.5%	70
Part-time	105	13.1%	627	78.2%	732
<b>Total</b>	<b>139</b>	<b>17.3%</b>	<b>663</b>	<b>82.7%</b>	<b>802</b>
<b>Fall 2008</b>					
Full-time	44	7.6%	60	10.3%	104
Part-time	105	18.1%	372	64.0%	477
<b>Total</b>	<b>149</b>	<b>25.6%</b>	<b>432</b>	<b>74.4%</b>	<b>581</b>
<b>Fall 2009</b>					
Full-time	49	11.1%	67	15.2%	116
Part-time	79	18.0%	245	55.7%	324
<b>Total</b>	<b>128</b>	<b>29.1%</b>	<b>312</b>	<b>70.9%</b>	<b>440</b>
<b>Fall 2010</b>					
Full-time	51	10.1%	77	15.3%	128
Part-time	83	16.5%	292	58.1%	375
<b>Total</b>	<b>134</b>	<b>26.6%</b>	<b>369</b>	<b>73.4%</b>	<b>503</b>
<b>Fall 2011</b>					
Full-time	61	10.8%	74	13.1%	135
Part-time	116	20.5%	316	55.7%	432
<b>Total</b>	<b>177</b>	<b>31.2%</b>	<b>390</b>	<b>68.8%</b>	<b>567</b>

**FALL ENROLLMENT TRENDS  
BY LEVEL  
FALL SEMESTERS 2007-2011**

	Fall 2007	Fall 2008	Fall 2009	Fall 2010	Fall 2011
<b>Undergraduate Degree Seeking</b>					
New Freshman	1,652	1,655	1,775	2,006	2,137
New Transfers	658	721	754	840	779
Other Freshman	414	427	469	485	536
Sophomore	1,346	1,468	1,375	1,387	1,523
Junior	1,265	1,388	1,433	1,469	1,507
Senior	1,516	1,663	1,738	1,787	1,815
<b>Total</b>	<b>6,851</b>	<b>7,322</b>	<b>7,544</b>	<b>7,974</b>	<b>8,297</b>
 Undergraduate Non-Degree Seeking	 219	 251	 376	 229	 220
<b>Total Undergraduate</b>	<b>7,070</b>	<b>7,573</b>	<b>7,920</b>	<b>8,203</b>	<b>8,517</b>
 <b>Graduate Degree Seeking</b>	 181	 231	 294	 331	 383
 Graduate Non-Degree Seeking	 621	 350	 146	 172	 184
<b>Total Graduate</b>	<b>802</b>	<b>581</b>	<b>440</b>	<b>503</b>	<b>567</b>
 <b>Total Enrollment</b>	 <b>7,872</b>	 <b>8,154</b>	 <b>8,360</b>	 <b>8,706</b>	 <b>9,084</b>

**FALL ENROLLMENT TRENDS BY LEVEL AND FULL-TIME / PART-TIME STATUS  
FALL SEMESTERS 2006 - 2011**

	Fall 2006	Fall 2007	Fall 2008	Fall 2009	Fall 2010	Fall 2011	2010-11
	Enrolled	Enrolled	Enrolled	Enrolled	Enrolled	Enrolled	% Change
<b><u>Undergraduate</u></b>							
Full-Time	6,004	6,452	6,883	7,138	7,539	7,849	4.11%
Part-time	656	618	690	782	664	668	0.60%
Undergraduate Totals	6,660	7,070	7,573	7,920	8,203	8,517	3.83%
<b><u>Graduate</u></b>							
Full-Time	133	70	104	116	128	135	5.47%
Part-time	1,256	732	477	324	375	432	15.20%
Graduate Totals	1,389	802	581	440	503	567	12.72%
<b><u>New Students</u></b>							
Freshman	1,474	1,652	1,655	1,775	2,006	2,137	6.53%
Transfer	615	658	721	754	840	779	-7.26%
Graduate	118	83	115	186	153	177	15.69%
New Student Totals	2,207	2,393	2,491	2,715	2,999	3,093	3.13%
<b>Grand Totals</b>	<b>8,049</b>	<b>7,872</b>	<b>8,154</b>	<b>8,360</b>	<b>8,706</b>	<b>9,084</b>	<b>4.34%</b>





**RESIDENCY CLASSIFICATION OF STUDENTS  
FOR FEE PAYMENT PURPOSES\*  
2007-2011**

	<b>In-State</b>	<b>%</b>	<b>Out-of-State</b>	<b>%</b>	<b>Total</b>
<b>2007</b>					
Undergraduate	4,825	61.3%	2,245	28.5%	7,070
Graduate	774	9.8%	28	0.4%	802
<b>Total</b>	<b>5,599</b>	<b>71.1%</b>	<b>2,273</b>	<b>28.9%</b>	<b>7,872</b>
<b>2008</b>					
Undergraduate	5,147	63.1%	2,426	29.8%	7,573
Graduate	549	6.7%	32	0.4%	581
<b>Total</b>	<b>5,696</b>	<b>69.9%</b>	<b>2,458</b>	<b>30.1%</b>	<b>8,154</b>
<b>2009</b>					
Undergraduate	5,365	64.2%	2,555	30.6%	7,920
Graduate	355	4.2%	85	1.0%	440
<b>Total</b>	<b>5,720</b>	<b>68.4%</b>	<b>2,640</b>	<b>31.6%</b>	<b>8,360</b>
<b>2010</b>					
Undergraduate	5,796	66.6%	2,407	27.6%	8,203
Graduate	469	5.4%	34	0.4%	503
<b>Total</b>	<b>6,265</b>	<b>72.0%</b>	<b>2,441</b>	<b>28.0%</b>	<b>8,706</b>
<b>2011</b>					
Undergraduate	6,013	66.2%	2,504	27.6%	8,517
Graduate	530	5.8%	37	0.4%	567
<b>Total</b>	<b>6,543</b>	<b>72.0%</b>	<b>2,541</b>	<b>28.0%</b>	<b>9,084</b>

\*Residency classification for fee payment purposes is defined by South Carolina statute.



**GEOGRAPHIC DISTRIBUTION OF ENROLLMENT  
BY STATE OR COUNTRY  
FALL 2011**



Alabama	10	Nevada	4	Albania	3	Lithuania	1
Alaska	1	New Hampshire	66	Argentina	1	Macedonia	1
Arizona	4	New Jersey	753	Armenia	2	Mexico	4
Arkansas	4	New York	605	Belarus	1	Netherlands	2
California	33	North Carolina	203	Belize	1	New Zealand	2
Colorado	11	North Dakota	1	Brazil	4	Nigeria	2
Connecticut	217	Ohio	156	Bulgaria	4	Norway	3
Delaware	62	Oklahoma	5	Burma	1	Peru	3
District of Columbia	4	Oregon	2	Cameroon	2	Poland	3
Florida	42	Pennsylvania	375	Canada	7	Romania	1
Georgia	66	Puerto Rico	1	Chile	1	Russia	8
Illinois	50	Rhode Island	26	China	7	Slovakia	1
Indiana	30	South Carolina	4868	Colombia	5	South Africa	1
Iowa	5	South Dakota	2	Costa Rica	1	Spain	5
Kansas	6	Tennessee	36	Ecuador	3	Sweden	2
Kentucky	32	Texas	15	Ethiopia	1	Taiwan	1
Louisiana	5	US Armed Forces - Europe	2	France	3	Thailand	1
Maine	17	Utah	1	Germany	14	Trinidad & Tobago	1
Maryland	509	Vermont	35	Guyana	1	United Kingdom	10
Massachusetts	245	Virginia	331	Haiti	1	Uzbekistan	1
Michigan	29	Washington	5	Honduras	1	Vietnam	3
Minnesota	8	West Virginia	34	Iceland	2		
Mississippi	1	Wisconsin	18	India	2		
Missouri	11	Wyoming	1	Israel	4		
Montana	2			Jamaica	3		
Nebraska	1			Japan	2		
				Lebanon	1		

<b>In-State</b>	4,868
<b>Out-of-State</b>	4,082
<b>International</b>	134
<b>Total</b>	9,084



# First-time Students

Coastal Carolina University

---

# Fact Book

Office of Institutional Research, Assessment and Analysis



Fall 2011





# FIRST-TIME STUDENTS

## TABLE OF CONTENTS

First-time Students Highlights .....	17
New Student Orientation Attendance.....	19
Applications, Acceptances, and Enrollments .....	20
New Freshmen, SAT and ACT Scores .....	21
New Freshmen, High School Grade Point Average .....	22
New Freshmen, High School Course Pre-requisites.....	23
New Freshmen Retention .....	24
First-time Full-time Freshmen One Year Retention.....	25
Profile of First-Time Full-Time Freshmen.....	29



## FIRST-TIME STUDENTS HIGHLIGHTS

*Fact Book, 2011*

Enrollment and academic trends for first-time students show the following:

- Applications from new undergraduate students increased 52% between Fall 2007 and Fall 2011. New student acceptances increased by 60%, and new student enrollment increased 23% over this period. In Fall 2011, 32% of all accepted applicants enrolled.
- The average SAT score for Fall 2011 freshmen was 1,013, representing a 5 point increase from Fall 2010, and exceeded the average South Carolina high school score of 972 and the national average of 1,011. The average ACT composite score of 21 for freshmen equaled the national average (21) and was one point greater than the South Carolina statewide average (20) for the Fall 2011 cohort. (*The writing test is not included in total SAT scores*)
- The average high school GPA of 3.34 for the Fall 2011 freshmen cohort is an increase from the GPA of 3.32 of the Fall 2007 cohort. The Fall 2011 freshmen cohort high school GPA remained unchanged from the Fall 2010 freshmen cohort. Seventy-two percent (72%) of Fall 2011 first-time full-time freshmen reported high school GPAs equal to or exceeding 3.00. Thirty-two percent (32%) indicated a high school GPA between 3.00 and 3.49; 40% reported a GPA of 3.50 or higher.
- Of the 1,999 Fall 2010 first-time full-time freshmen cohort, 1,256 students (63%) chose to continue their studies at the University for Fall 2011. The one year retention for the 2010 cohort is 63%, lower than the one year retention for the Fall 2009 cohort (65%).
- In geographic origin, 619 (49%) continuing students were native to South Carolina and 637 (51%) students were from other U.S. states and international origins.
- Among the academic colleges, the continuation of first-time full-time freshmen for Fall 2010 to Fall 2011: Wall College of Business Administration (75%), Spadoni College of Education (69%), Edwards College of Humanities and Fine Arts (65%), College of Science (59%) and University College (51%).

### Demographics - First-Time Full-Time Freshmen - Fall 2011

- The most prominent ethnic groups among the Fall 2011 first-time full-time freshmen were White (71%), Black/African American (20%) and Hispanic/Latino (4%).

- Female students outnumbered male students in the Fall 2011 full-time first-time freshmen cohort with 54% of the total.
- Ninety-nine percent of Fall 2011 first-time full-time freshmen were under 20.
- Twenty-one percent of first-time full-time freshmen originated from the immediate five-county service area of Dillon, Georgetown, Horry, Marion, and Williamsburg counties. Approximately 24% originated from other South Carolina counties.
- In Fall 2011, 14% of first-time full-time freshmen had not declared a major. The four most popular undergraduate majors at Coastal Carolina University among first-time freshmen were: Marine Science (16%), Biology (8%), Management (7%) and Exercise and Sport Science (6%).

**The *First-Time Students* section is in alignment with the following supporting key strategies and goals from the *Coastal Carolina University Strategic Plan*:**

Strategy 1: Meeting the Educational Needs of Students and Community

Expand degree and non-degree program offerings and formats while maintaining quality in all programs.

Goal 1.2. Appropriate Educational Initiatives: Promote high quality educational programs and services that are aligned with available resources to meet the needs of our constituencies.

Goal 1.3. Improved Access to Education: Enhance accessibility of education at Coastal Carolina University while maintaining quality standards.

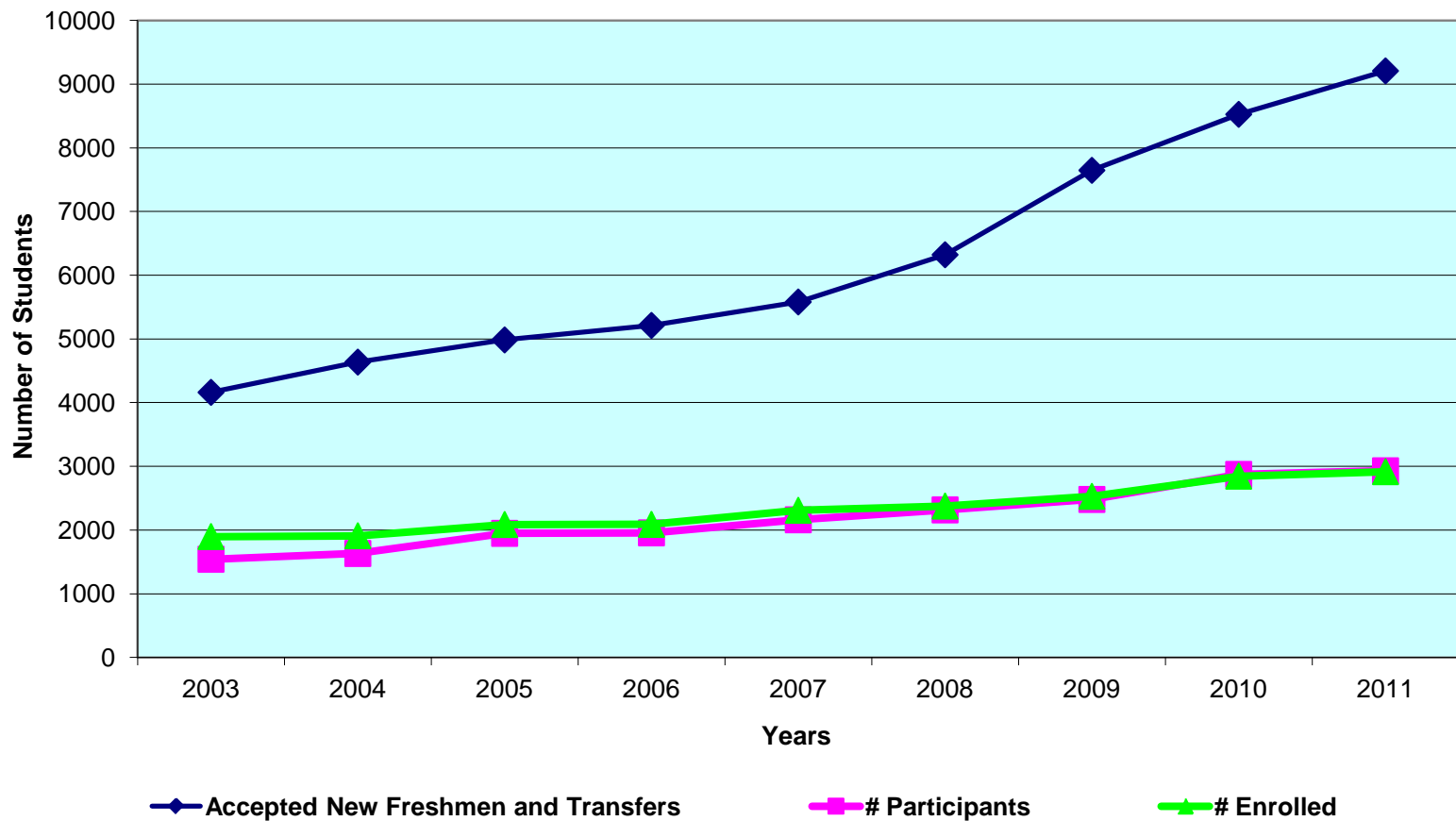
Strategy 2: Ensuring Student Success

Increase retention and graduation rates by supporting programs and services that enrich the student learning and living environment and broaden the diversity of students seeking Coastal Carolina University as their choice for educational advancement.

Goal 2.1. Talented & Diverse Student Body: Implement a comprehensive enrollment strategy to recruit and retain an academically talented and diverse student body.

**NEW STUDENT ORIENTATION ATTENDANCE AND  
NUMBER/PERCENT ENROLLED  
SUMMER 2003-2011**

<u>YEAR</u>	<u>TOTAL ACCEPTED NEW FRESHMEN AND TRANSFERS</u>	<u># FRESHMEN &amp; TRANSFERS ATTENDED ORIENTATION</u>	<u>% FRESHMEN &amp; TRANSFERS ATTENDED ORIENTATION</u>	<u># NEW FRESHMEN &amp; TRANSFERS ENROLLED</u>	<u>% ENROLLED</u>
2003	4,161	1,542	37.1%	1,898	45.6%
2004	4,636	1,632	35.2%	1,910	41.2%
2005	4,984	1,948	39.1%	2,087	41.9%
2006	5,212	1,956	37.5%	2,089	40.1%
2007	5,580	2,161	38.7%	2,310	41.4%
2008	6,321	2,316	36.6%	2,376	37.6%
2009	7,646	2,480	32.4%	2,529	33.1%
2010	8,525	2,873	33.7%	2,846	33.4%
2011	9,207	2,930	31.8%	2,916	31.7%



**APPLICATIONS, ACCEPTANCES, AND ENROLLMENTS  
FALL SEMESTERS 2007-2011  
UNDERGRADUATE**

	<b>2007</b>	<b>2008</b>	<b>2009</b>	<b>2010</b>	<b>2011</b>
<b>APPLICATIONS RECEIVED</b>					
Freshmen	6,618	7,514	8,706	9,639	10,502
Transfer	1,490	1,631	1,752	2,020	2,008
Other	490	509	562	748	528
<b>TOTAL</b>	<b>8,598</b>	<b>9,654</b>	<b>11,020</b>	<b>12,407</b>	<b>13,038</b>
<b>ACCEPTED FOR ADMISSION</b>					
Freshmen	4,524	5,215	6,438	7,170	7,836
Transfer	1,056	1,106	1,208	1,355	1,333
Other	437	487	514	676	477
<b>TOTAL</b>	<b>6,017</b>	<b>6,808</b>	<b>8,160</b>	<b>9,201</b>	<b>9,646</b>
<b>DENIED ADMISSION</b>					
Freshmen	1,352	2,014	1,618	1,657	2,486
Transfer	178	227	185	334	242
Other	1	5	13	5	5
<b>TOTAL</b>	<b>1,531</b>	<b>2,246</b>	<b>1,816</b>	<b>1,996</b>	<b>2,733</b>
<b>ENROLLED</b>					
Freshmen	1,652	1,655	1,775	2,006	2,137
Transfer	658	721	754	840	779
Other	221	230	219	224	206
<b>TOTAL</b>	<b>2,531</b>	<b>2,606</b>	<b>2,748</b>	<b>3,070</b>	<b>3,122</b>
<b>PERCENT OF APPLICANTS ENROLLING</b>					
Freshmen	25%	22%	20%	21%	20%
Transfer	44%	44%	43%	42%	39%
Other	45%	45%	39%	30%	39%
<b>TOTAL</b>	<b>29%</b>	<b>27%</b>	<b>25%</b>	<b>25%</b>	<b>24%</b>
<b>PERCENT OF ACCEPTED APPLICANTS ENROLLING</b>					
Freshmen	37%	32%	28%	28%	27%
Transfer	62%	65%	62%	62%	58%
Other	51%	47%	43%	33%	43%
<b>TOTAL</b>	<b>42%</b>	<b>38%</b>	<b>34%</b>	<b>33%</b>	<b>32%</b>

**NEW FRESHMEN  
SAT AND ACT SCORES  
FALL SEMESTERS 2007-2011**

	Fall 2007		Fall 2008		Fall 2009		Fall 2010		Fall 2011	
	#	%	#	%	#	%	#	%	#	%
<b>SAT TOTAL SCORE</b>										
< 800	0	0.0%	0	0.0%	0	0.0%	0	0.0%	0	0.0%
800-899	39	3.3%	36	2.6%	146	11.9%	234	17.4%	250	17.7%
900-999	425	35.5%	547	40.2%	362	29.4%	413	30.7%	392	27.7%
1000-1099	390	32.6%	447	32.8%	392	31.8%	405	30.1%	438	31.0%
1100-1199	232	19.4%	229	16.8%	233	18.9%	200	14.9%	221	15.6%
1200-1299	99	8.3%	81	6.0%	77	6.3%	77	5.7%	90	6.4%
> 1299	12	1.0%	21	1.5%	21	1.7%	17	1.3%	22	1.6%
<b>Average SAT Score</b>	<b>1040</b>		<b>1030</b>		<b>1028</b>		<b>1008</b>		<b>1013</b>	
<b>South Carolina Average</b>	<b>984</b>		<b>985</b>		<b>982</b>		<b>979</b>		<b>972</b>	
<b>National Average</b>	<b>1017</b>		<b>1017</b>		<b>1016</b>		<b>1017</b>		<b>1011</b>	
<b>ACT COMPOSITE SCORE</b>										
<18	13	2.9%	14	2.3%	40	7.4%	91	14.0%	75	10.4%
18	16	3.6%	31	5.1%	82	15.2%	105	16.1%	115	16.0%
19	68	15.2%	71	11.6%	95	17.6%	115	17.7%	127	17.6%
20	112	25.1%	121	19.8%	98	18.1%	98	15.1%	103	14.3%
21	71	15.9%	98	16.0%	71	13.1%	81	12.4%	84	11.7%
22	61	13.7%	79	12.9%	52	9.6%	53	8.1%	67	9.3%
>22	105	23.5%	197	32.2%	103	19.0%	108	16.6%	150	20.8%
<b>Average ACT Score</b>	<b>21</b>		<b>22</b>		<b>21</b>		<b>20</b>		<b>21</b>	
<b>South Carolina Average</b>	<b>20</b>		<b>20</b>		<b>20</b>		<b>20</b>		<b>20</b>	
<b>National Average</b>	<b>21</b>		<b>21</b>		<b>21</b>		<b>21</b>		<b>21</b>	



**NEW FRESHMEN  
HIGH SCHOOL GRADE POINT AVERAGE  
FALL SEMESTERS 2007-2011**

<u>High School GPA</u>	<u>Fall 2007</u>	<u>Fall 2008</u>	<u>Fall 2009</u>	<u>Fall 2010</u>	<u>Fall 2011</u>
< 1.75 %	0 0.0%	0 0.0%	0 0.0%	0 0.0%	0 0.0%
1.75-1.99 %	0 0.0%	0 0.0%	2 0.1%	5 0.3%	0 0.0%
2.00-2.49 %	71 4.4%	69 4.2%	106 6.1%	126 6.3%	122 6.1%
2.50-2.99 %	352 21.7%	370 22.7%	406 23.2%	432 21.7%	476 23.9%
3.00-3.49 %	535 33.0%	533 32.6%	567 32.4%	642 32.2%	684 34.3%
>=3.50 %	661 40.8%	661 40.5%	668 38.2%	787 39.5%	845 42.4%
<b>Total with High School GPA</b>	<b>1,619</b>	<b>1,633</b>	<b>1,749</b>	<b>1,992</b>	<b>2,127</b>
<b>Average High School GPA</b>	<b>3.32</b>	<b>3.35</b>	<b>3.31</b>	<b>3.34</b>	<b>3.34</b>
<b>South Carolina Average</b>	<b>3.38</b>	<b>3.37</b>	<b>3.39</b>	<b>3.42</b>	<b>3.41</b>
<b>National Average</b>	<b>3.33</b>	<b>3.31</b>	<b>3.32</b>	<b>3.34</b>	<b>3.34</b>

**NEW FRESHMEN HIGH SCHOOL COURSE PRE-REQUISITES  
FOR PUBLIC COLLEGE/UNIVERSITY ADMISSION  
% MEETING REQUIREMENT  
FALL SEMESTERS 2007-2011**

<b>South Carolina Required Prerequisites</b>	<b>2007</b>	<b>2008</b>	<b>2009</b>	<b>2010</b>	<b>2011*</b>
English (4 units)	99.8%	100.0%	100.0%	100.0%	100.0%
Mathematics (4 units)	99.9%	100.0%	99.9%	100.0%	96.0%
Laboratory Science (3 units)	96.7%	98.5%	98.0%	98.5%	99.2%
Foreign Language (2 units)	98.1%	99.0%	98.5%	98.8%	98.7%
Social Studies (2 units)	99.8%	99.9%	99.7%	100.0%	99.9%
History (1 unit)	100.0%	100.0%	100.0%	100.0%	100.0%
Advanced Electives (1 unit)	97.8%	99.8%	99.0%	99.4%	100.0%
Visual/Performing Arts (1 unit)	N/A	N/A	N/A	N/A	97.4%
Physical Education (1 unit)	99.3%	99.6%	99.9%	99.7%	100.0%
All Courses	92.3%	97.0%	95.3%	96.5%	92.4%

\*Prerequisites changed Fall 2011.

**NEW FRESHMEN RETENTION  
FALL SEMESTERS 2005-2011**

	2005	2006	2007	2008	2009	2010	2011
<b># NEW FULL-TIME</b>							
<b>FRESHMEN</b>	1,495	1,468	1,649	1,643	1,769	1,999	2,128
<b>Adjustments to Cohort</b>	2						
<b>Adjusted Cohort*</b>	1,493						
<b>Returned 2nd Year</b>	1,008	1,044	1,178	1,083	1,141	1,256	62.8%
<b>Returned 3rd Year</b>	845	848	945	898	919		52.0%
<b>Returned 4th Year</b>	779	787	851	824			50.2%
<b>AFTER 4TH YEAR</b>							
<b>Graduated</b>	375	420	443				26.9%
<b>Returned</b>	404	356	356				21.6%
<b>Total Retention</b>	779	776	799				48.5%
<b>AFTER 5TH YEAR</b>							
<b>Graduated</b>	641	644					43.9%
<b>Returned</b>	90	83					5.7%
<b>Total Retention</b>	731	727					49.5%
<b>AFTER 6TH YEAR</b>							
<b>Graduated</b>	691						46.3%
<b>Returned</b>	31						2.1%
<b>Total Retention</b>	722						48.4%

Cohort	%
2001	43.9%
2002	46.5%
2003	46.4%
2004	43.0%
2005	46.3%

Note: For reporting purposes, six-year graduation rate is based on Adjusted Cohort.

**FIRST-TIME FULL-TIME FRESHMEN  
COMPARISON OF CONTINUING AND NON-CONTINUING STUDENTS  
FALL SEMESTERS 2010 - 2011**

	FRESHMEN		CONTINUING		NON-CONTINUING	
	Number	Percent	Number	Percent	Number	Percent
<b>ETHNICITY</b>						
Hispanic/Latino	73	3.66%	49	67.12%	24	32.88%
<b>RACE</b>						
American Indian/Alaskan Native	6	0.30%	3	50.00%	3	50.00%
Asian	12	0.60%	7	58.33%	5	41.67%
Black/African American	395	19.80%	273	69.11%	122	30.89%
Native Hawaiian/Pacific Islander	5	0.25%	3	60.00%	2	40.00%
White	1,438	72.08%	881	61.27%	557	38.73%
Two or More Races	52	2.61%	28	53.85%	24	46.15%
Non-Resident Alien	14	0.70%	10	71.43%	4	28.57%
Unknown	4	---	2	50.00%	2	50.00%
<b>Total</b>	<b>1,999</b>	<b>100.00%</b>	<b>1,256</b>	<b>62.83%</b>	<b>743</b>	<b>37.17%</b>
<b>GENDER</b>						
Men	911	45.57%	556	61.03%	355	38.97%
Women	1,088	54.43%	700	64.34%	388	35.66%
<b>Total</b>	<b>1,999</b>	<b>100.00%</b>	<b>1,256</b>	<b>62.83%</b>	<b>743</b>	<b>37.17%</b>
<b>AGE</b>						
less than 20	1,974	98.75%	1,242	62.92%	732	37.08%
20-22	19	0.95%	12	63.16%	7	36.84%
23-24	5	0.25%	2	40.00%	3	60.00%
25-29	1	0.05%	0	0.00%	1	100.00%
30-39	0	0.00%	0	---	0	---
40-49	0	0.00%	0	---	0	---
50+	0	0.00%	0	---	0	---
No Report	0	---	0	---	0	---
<b>Total</b>	<b>1,999</b>	<b>100.00%</b>	<b>1,256</b>	<b>62.83%</b>	<b>743</b>	<b>37.17%</b>
<b>GEOGRAPHIC LOCATION</b>						
In-State	933	46.67%	619	66.35%	314	33.65%
Out-of-State	1,052	52.63%	627	59.60%	425	40.40%
International	14	0.70%	10	71.43%	4	28.57%
<b>Total</b>	<b>1,999</b>	<b>100.00%</b>	<b>1,256</b>	<b>62.83%</b>	<b>743</b>	<b>37.17%</b>
<b>IN-STATE</b>						
Five-County Service Area						
Dillon	8	0.40%	7	87.50%	1	12.50%
Georgetown	26	1.30%	13	50.00%	13	50.00%
Horry	272	13.61%	185	68.01%	87	31.99%
Marion	9	0.45%	7	77.78%	2	22.22%
Williamsburg	14	0.70%	8	57.14%	6	42.86%
<b>Total</b>	<b>329</b>	<b>16.46%</b>	<b>220</b>	<b>66.87%</b>	<b>109</b>	<b>33.13%</b>
Other SC Counties						
Charleston	46	2.30%	29	63.04%	17	36.96%
Florence	41	2.05%	28	68.29%	13	31.71%
Greenville	62	3.10%	43	69.35%	19	30.65%
Lexington	29	1.45%	20	68.97%	9	31.03%
York	43	2.15%	30	69.77%	13	30.23%
Other	383	19.16%	247	64.49%	136	35.51%
<b>Total</b>	<b>604</b>	<b>30.22%</b>	<b>397</b>	<b>65.73%</b>	<b>207</b>	<b>34.27%</b>

**FIRST-TIME FULL-TIME FRESHMEN  
COMPARISON OF CONTINUING AND NON-CONTINUING STUDENTS  
FALL SEMESTERS 2010 - 2011**

	FRESHMEN		CONTINUING		NON-CONTINUING	
	Number	Percent	Number	Percent	Number	Percent
<b>OUT-OF-STATE</b>						
Connecticut	45	2.25%	33	73.33%	12	26.67%
Illinois	7	0.35%	4	57.14%	3	42.86%
Maryland	138	6.90%	75	54.35%	63	45.65%
New Jersey	219	10.96%	147	67.12%	72	32.88%
New York	138	6.90%	80	57.97%	58	42.03%
North Carolina	57	2.85%	26	45.61%	31	54.39%
Ohio	42	2.10%	19	45.24%	23	54.76%
Pennsylvania	99	4.95%	57	57.58%	42	42.42%
Virginia	70	3.50%	52	74.29%	18	25.71%
West Virginia	14	0.70%	5	35.71%	9	64.29%
Other	223	11.16%	129	57.85%	94	42.15%
International	14	0.70%	10	71.43%	4	28.57%
<b>Total</b>	<b>1,066</b>	<b>53.33%</b>	<b>637</b>	<b>59.76%</b>	<b>429</b>	<b>40.24%</b>
<b>SAT TOTAL SCORE</b>						
Less than 650	0	---	0	---	0	---
650-699	0	---	0	---	0	---
700-749	0	---	0	---	0	---
750-799	0	---	0	---	0	---
800-849	63	4.69%	41	65.08%	22	34.92%
850-899	171	12.72%	105	61.40%	66	38.60%
900-949	205	15.25%	117	57.07%	88	42.93%
950-999	208	15.48%	118	56.73%	90	43.27%
1000-1099	405	30.13%	250	61.73%	155	38.27%
1100-1199	199	14.81%	135	67.84%	64	32.16%
1200 and above	93	6.92%	62	66.67%	31	33.33%
No SAT Score Reported	655	---	428	65.34%	227	34.66%
<b>Total</b>	<b>1,999</b>	<b>100.00%</b>	<b>1,256</b>	<b>62.83%</b>	<b>743</b>	<b>37.17%</b>
<b>ACT TOTAL SCORE</b>						
16-17	91	14.00%	58	63.74%	33	36.26%
18-19	219	33.69%	147	67.12%	72	32.88%
20-21	179	27.54%	124	69.27%	55	30.73%
22-23	84	12.92%	55	65.48%	29	34.52%
24-25	39	6.00%	23	58.97%	16	41.03%
26-27	27	4.15%	14	51.85%	13	48.15%
28-29	10	1.54%	5	50.00%	5	50.00%
30-32	1	0.15%	1	100.00%	0	0.00%
33 and above	0	0.00%	0	---	0	---
No ACT Score Reported	1,349	---	829	61.45%	520	38.55%
<b>Total</b>	<b>1,999</b>	<b>100.00%</b>	<b>1,256</b>	<b>62.83%</b>	<b>743</b>	<b>37.17%</b>
<b>HIGH SCHOOL RANK</b>						
Top 10%	147	9.20%	112	76.19%	35	23.81%
11-20%	238	14.90%	177	74.37%	61	25.63%
21-30%	270	16.91%	191	70.74%	79	29.26%
31-40%	223	13.96%	133	59.64%	90	40.36%
41-50%	230	14.40%	144	62.61%	86	37.39%
51-60%	195	12.21%	106	54.36%	89	45.64%
61-70%	150	9.39%	68	45.33%	82	54.67%
71-80%	88	5.51%	54	61.36%	34	38.64%
81-90%	44	2.76%	14	31.82%	30	68.18%
Bottom 10%	12	0.75%	6	50.00%	6	50.00%
No High School Rank Reported	402	---	251	62.44%	151	37.56%
<b>Total</b>	<b>1,999</b>	<b>100.00%</b>	<b>1,256</b>	<b>62.83%</b>	<b>743</b>	<b>37.17%</b>

**FIRST-TIME FULL-TIME FRESHMEN  
COMPARISON OF CONTINUING AND NON-CONTINUING STUDENTS  
FALL SEMESTERS 2010 - 2011**

	FRESHMEN		CONTINUING		NON-CONTINUING	
	Number	Percent	Number	Percent	Number	Percent
<b>HIGH SCHOOL GPA</b>						
0.000	0	0.00%	0	---	0	---
0.01 - 1.50	0	0.00%	0	---	0	---
1.51 - 1.99	5	0.25%	1	20.00%	4	80.00%
2.00 - 2.49	126	6.33%	63	50.00%	63	50.00%
2.50 - 2.99	432	21.72%	236	54.63%	196	45.37%
3.00 - 3.49	640	32.18%	390	60.94%	250	39.06%
3.50 - 4.00	541	27.20%	367	67.84%	174	32.16%
Higher than 4.00	245	12.32%	195	79.59%	50	20.41%
No High School GPA Reported	10	---	4	40.00%	6	60.00%
<b>Total</b>	<b>1,999</b>	<b>100.00%</b>	<b>1,256</b>	<b>62.83%</b>	<b>743</b>	<b>37.17%</b>
<b>FIRST-SEMESTER GPA (End of Fall 2010)</b>						
0.000	34	1.73%	0	0.00%	34	100.00%
0.01 - 1.50	153	7.80%	38	24.84%	115	75.16%
1.51 - 1.99	134	6.83%	63	47.01%	71	52.99%
2.00 - 2.49	228	11.63%	152	66.67%	76	33.33%
2.50 - 2.99	379	19.33%	265	69.92%	114	30.08%
3.00 - 3.49	549	28.00%	391	71.22%	158	28.78%
3.50 - 4.00	484	24.68%	347	71.69%	137	28.31%
WITHDREW	38	---	0	0.00%	38	100.00%
<b>Total</b>	<b>1,999</b>	<b>100.00%</b>	<b>1,256</b>	<b>62.83%</b>	<b>743</b>	<b>37.17%</b>
<b>FIRST-YEAR CUMMULATIVE GPA (End of Spring 2011)</b>						
0.000	7	0.41%	0	0.00%	7	100.00%
0.01 - 1.50	125	7.39%	12	9.60%	113	90.40%
1.51 - 1.99	133	7.86%	84	63.16%	49	36.84%
2.00 - 2.49	247	14.60%	191	77.33%	56	22.67%
2.50 - 2.99	396	23.40%	317	80.05%	79	19.95%
3.00 - 3.49	468	27.66%	378	80.77%	90	19.23%
3.50 - 4.00	316	18.68%	261	82.59%	55	17.41%
WITHDREW	307	---	13	4.23%	294	95.77%
<b>Total</b>	<b>1,999</b>	<b>100.00%</b>	<b>1,256</b>	<b>62.83%</b>	<b>743</b>	<b>37.17%</b>

**FIRST-TIME FULL-TIME FRESHMEN  
COMPARISON OF CONTINUING AND NON-CONTINUING STUDENTS  
FALL SEMESTERS 2010 - 2011**

COLLEGE/MAJOR	FRESHMEN		CONTINUING		NON-CONTINUING	
	Number	Percent	Number	Percent	Number	Percent
<b>BUSINESS ADMINISTRATION</b>						
Accounting	71	3.55%	51	71.83%	20	28.17%
Economics (BA)	2	0.10%	0	0.00%	2	100.00%
Economics (BS)	11	0.55%	10	90.91%	1	9.09%
Finance	19	0.95%	11	57.89%	8	42.11%
Management	129	6.45%	107	82.95%	22	17.05%
Marketing	94	4.70%	67	71.28%	27	28.72%
Resort Tourism Management	60	3.00%	42	70.00%	18	30.00%
<b>Total</b>	<b>386</b>	<b>19.31%</b>	<b>288</b>	<b>74.61%</b>	<b>98</b>	<b>25.39%</b>
<b>EDUCATION</b>						
Early Childhood Education	67	3.35%	50	74.63%	17	25.37%
Elementary Education	50	2.50%	32	64.00%	18	36.00%
Middle Level Education	25	1.25%	15	60.00%	10	40.00%
Physical Education	31	1.55%	19	61.29%	12	38.71%
Special Education	24	1.20%	19	79.17%	5	20.83%
<b>Total</b>	<b>197</b>	<b>9.85%</b>	<b>135</b>	<b>68.53%</b>	<b>62</b>	<b>31.47%</b>
<b>HUMANITIES &amp; FINE ARTS</b>						
Art Studio	19	0.95%	13	68.42%	6	31.58%
Communication	92	4.60%	60	65.22%	32	34.78%
Dramatic Arts	14	0.70%	8	57.14%	6	42.86%
English	24	1.20%	17	70.83%	7	29.17%
Graphic Design	20	1.00%	16	80.00%	4	20.00%
History	29	1.45%	17	58.62%	12	41.38%
Music	22	1.10%	16	72.73%	6	27.27%
Musical Theatre	12	0.60%	8	66.67%	4	33.33%
Philosophy	2	0.10%	1	50.00%	1	50.00%
Political Science	42	2.10%	24	57.14%	18	42.86%
Spanish	4	0.20%	3	75.00%	1	25.00%
Theatre Arts	6	0.30%	3	50.00%	3	50.00%
<b>Total</b>	<b>286</b>	<b>14.31%</b>	<b>186</b>	<b>65.03%</b>	<b>100</b>	<b>34.97%</b>
<b>SCIENCE</b>						
Biochemistry	2	0.10%	2	100.00%	0	0.00%
Biology	192	9.60%	109	56.77%	83	43.23%
Chemistry	19	0.95%	9	47.37%	10	52.63%
Computer Science	67	3.35%	40	59.70%	27	40.30%
Exercise and Sport Science	91	4.55%	60	65.93%	31	34.07%
Health Promotion	33	1.65%	23	69.70%	10	30.30%
Information Systems	4	0.20%	1	25.00%	3	75.00%
Marine Science	225	11.26%	134	59.56%	91	40.44%
Mathematics	28	1.40%	15	53.57%	13	46.43%
Physics	7	0.35%	5	71.43%	2	28.57%
Psychology	124	6.20%	65	52.42%	59	47.58%
Recreation Sports Management	58	2.90%	40	68.97%	18	31.03%
Sociology	22	1.10%	12	54.55%	10	45.45%
<b>Total</b>	<b>872</b>	<b>43.62%</b>	<b>515</b>	<b>59.06%</b>	<b>357</b>	<b>40.94%</b>
<b>UNIVERSITY</b>						
Interdisciplinary Studies	0	0.00%	0	---	0	---
Undeclared	258	12.91%	132	51.16%	126	48.84%
<b>GRAND TOTAL</b>	<b>1,999</b>		<b>1,256</b>		<b>743</b>	

**PROFILE OF FIRST-TIME FULL-TIME FRESHMEN  
FALL 2011**

	FRESHMEN	
	Number	Percent
<b>ETHNICITY</b>		
Hispanic/Latino	78	3.7%
<b>RACE</b>		
American Indian/Alaskan Native	10	0.5%
Asian	13	0.6%
Black/African American	421	19.8%
Native Hawaiian/Pacific Islander	5	0.2%
White	1,517	71.3%
Two or More Races	67	3.1%
Non-Resident Alien	17	0.8%
Unknown	0	0.0%
<b>Total</b>	<b>2,128</b>	<b>100.0%</b>
<b>GENDER</b>		
Male	984	46.2%
Female	1,144	53.8%
<b>Total</b>	<b>2,128</b>	<b>100.0%</b>
<b>AGE</b>		
less than 20	2,109	99.1%
20-22	16	0.8%
23-24	1	0.0%
25-29	2	0.1%
30-39	0	0.0%
40-49	0	0.0%
50+	0	0.0%
No Report	0	0.0%
<b>Total</b>	<b>2,128</b>	<b>100.0%</b>
<b>GEOGRAPHIC LOCATION</b>		
In-State	963	45.3%
Out-of-State	1,148	53.9%
International	17	0.8%
<b>Total</b>	<b>2,128</b>	<b>100.0%</b>
<b>IN-STATE</b>		
Five-County Service Area		
Dillon	9	0.4%
Georgetown	13	0.6%
Horry	417	19.6%
Marion	9	0.4%
Williamsburg	5	0.2%
<b>Total</b>	<b>453</b>	<b>21.3%</b>
Other SC Counties		
Charleston	43	2.0%
Florence	21	1.0%
Greenville	35	1.6%
Lexington	32	1.5%
York	29	1.4%
Other	350	16.4%
<b>Total</b>	<b>510</b>	<b>24.0%</b>



	FRESHMEN	
	Number	Percent
<b>OUT-OF -STATE</b>		
Connecticut	60	2.8%
Illinois	10	0.5%
Maryland	141	6.6%
New Jersey	220	10.3%
New York	133	6.3%
North Carolina	72	3.4%
Ohio	44	2.1%
Pennsylvania	115	5.4%
Virginia	91	4.3%
West Virginia	9	0.4%
Other	253	11.9%
International	17	0.8%
<b>Total</b>	<b>1,165</b>	<b>54.7%</b>
<b>SAT TOTAL SCORE</b>		
Less than 650	0	0.0%
650-699	0	0.0%
700-749	0	0.0%
750-799	0	0.0%
800-849	62	2.9%
850-899	188	8.8%
900-949	201	9.4%
950-999	189	8.9%
1000-1099	435	20.4%
1100-1199	221	10.4%
1200 and above	112	5.3%
No Report	720	33.8%
<b>Total</b>	<b>2,128</b>	<b>100.0%</b>
<b>ACT TOTAL SCORE</b>		
Less than 16	0	0.0%
16-17	74	3.5%
18-19	242	11.4%
20-21	186	8.7%
22-23	120	5.6%
24-25	53	2.5%
26-27	24	1.1%
28-29	13	0.6%
30-32	5	0.2%
33 and above	2	0.1%
No Report	1,409	66.2%
<b>Total</b>	<b>2,128</b>	<b>100.0%</b>

	FRESHMEN	
	Number	Percent
<b>HIGH SCHOOL RANK</b>		
Top 10%	151	7.1%
11-20%	236	11.1%
21-30%	279	13.1%
31-40%	276	13.0%
41-50%	257	12.1%
51-60%	192	9.0%
61-70%	140	6.6%
71-80%	94	4.4%
81-90%	42	2.0%
Bottom 10%	11	0.5%
GED	1	0.0%
No Report	449	21.1%
<b>Total</b>	<b>2,128</b>	<b>100.0%</b>
<b>HIGH SCHOOL GPA</b>		
1.51 - 1.99	0	0.0%
2.00 - 2.49	122	5.7%
2.50 - 2.99	474	22.3%
3.00 - 3.49	683	32.1%
3.50 - 4.00	593	27.9%
Higher than 4.00	248	11.7%
No Report	8	0.4%
<b>Total</b>	<b>2,128</b>	<b>100.0%</b>

COLLEGE/MAJOR	FRESHMEN	
	Number	Percent
<b>BUSINESS ADMINISTRATION</b>		
Accounting	70	3.3%
Economics (BA)	0	0.0%
Economics (BS)	14	0.7%
Finance	41	1.9%
Management	142	6.7%
Marketing	75	3.5%
Resort Tourism Management	50	2.3%
<b>Total</b>	<b>392</b>	<b>18.4%</b>
<b>EDUCATION</b>		
Early Childhood Education	47	2.2%
Elementary Education	37	1.7%
Middle Level Education	27	1.3%
Physical Education	15	0.7%
Special Education	23	1.1%
<b>Total</b>	<b>149</b>	<b>7.0%</b>
<b>HUMANITIES &amp; FINE ARTS</b>		
Art Studio	20	0.9%
Communication	73	3.4%
Dramatic Arts	18	0.8%
English	23	1.1%
Graphic Design	52	2.4%
History	19	0.9%
Music	25	1.2%
Musical Theatre	9	0.4%
Philosophy	4	0.2%
Political Science	44	2.1%
Spanish	6	0.3%
Theatre Arts	16	0.8%
<b>Total</b>	<b>309</b>	<b>14.5%</b>
<b>SCIENCE</b>		
Biochemistry	37	1.7%
Biology	175	8.2%
Chemistry	11	0.5%
Computer Science	52	2.4%
Exercise and Sport Science	128	6.0%
Health Administration	0	0.0%
Health Promotion	23	1.1%
Information Systems	11	0.5%
Marine Science	334	15.7%
Mathematics	28	1.3%
Nursing	0	0.0%
Physics	6	0.3%
Psychology	101	4.7%
Recreation Sports Management	42	2.0%
Sociology	27	1.3%
<b>Total</b>	<b>975</b>	<b>45.8%</b>
<b>UNIVERSITY</b>		
Interdisciplinary Studies	0	0.0%
Undeclared	303	14.2%
<b>GRAND TOTAL</b>	<b>2,128</b>	<b>100.0%</b>

# First-time Transfer Students

Coastal Carolina University

---

# Fact Book

Office of Institutional Research, Assessment and Analysis



Fall 2011



# FIRST-TIME TRANSFER STUDENTS

## TABLE OF CONTENTS

First-time Transfer Students Highlights.....	35
Migration of Transfer Students to Coastal Carolina University.....	37
Migration of Transfer Students from Coastal Carolina University .....	38
New Transfer Student Retention.....	39
First-time Full-time Transfer Students One Year Retention .....	40
Profile of First-time Full-time Transfer Students.....	43



## FIRST-TIME TRANSFER STUDENTS HIGHLIGHTS

*Fact Book, 2011*

### First-Time Full-Time Transfers - Fall 2011

- In Fall 2011, there were 714 newly enrolled first-time full-time transfer students, representing a decrease of 9% from Fall 2010 (777).
- The most prominent ethnic groups among the Fall 2011 first-time full-time transfer students were White (72%), Black/African American (19%) and Hispanic/Latino (2%).
- Female students comprised 54% of first-time full-time transfer students.
- First-time full-time transfer students consisted mostly of students between the ages of 20 and 22 (56%) and less than 20 years of age (23%).
- In Fall 2011, more in-state transfer students enrolled (50%) than out-of-state students (47%). International students comprised 3% of the non in-state transfer students.
- In Fall 2011, 38% of first-time full-time transfer students originated from the immediate five-county service area of Dillon, Georgetown, Horry, Marion, and Williamsburg counties. Approximately 13% originated from other South Carolina counties.
- Of the 714 first-time full-time transfer students in Fall 2011, 70% transferred 30 credit hours or more.
- Approximately 4% of first-time full-time transfer students had not declared a major in Fall 2011. The five most popular majors for transfer students were: Exercise and Sport Science (9%), Management (8%), Psychology (6%), Biology (6%) and Marine Science (6%).

### Migration and retention trends of 2010 first-time transfer students

- The number of students (840) who transferred to the University in 2010 increased by 11% over 2009. Transfer students who came from other South Carolina higher education institutions comprised approximately 46% of the total transfer student population in 2010. The majority of the in-state transfer students (53%) were previously enrolled at Horry-Georgetown Technical College.



- The first year student retention rate for 2010 transfer students was 72%, representing an increase of 5% over the 2009 rate.
- There were a total of 777 first-time full-time transfer students enrolled at the University in Fall 2010. Of the 2010 transfer student cohort, 557 students chose to continue their studies at the University the following year. The one year retention rate for the Fall 2010 cohort is 71.7% which is higher than the one year retention for the Fall 2009 cohort (67.2%).
- In geographic origin, 298 (54%) continuing students were native to South Carolina and 259 (46%) students were from other U.S. states or international countries.
- Among the academic colleges, the continuation of first-time full-time transfer students from Fall 2010 to Fall 2011 was: Wall College of Business Administration (72%), Spadoni College of Education (73%), Edwards College of Humanities and Fine Arts (73%), College of Science (70%) and University College (73%).

**The *First-Time Transfer Students* section is in alignment with the following supporting key strategies and goals from the *Coastal Carolina University Strategic Plan*:**

Strategy 1: Meeting the Educational Needs of Students and Community

Expand degree and non-degree program offerings and formats while maintaining quality in all programs.

Goal 1.2. Appropriate Educational Initiatives: Promote high quality educational programs and services that are aligned with available resources to meet the needs of our constituencies.

Goal 1.5. Mutually-Beneficial Community Partnerships: Enhance and expand connections between the community and University programs and services to support enrollment, academic, cultural, and athletic outcomes which further the mission of Coastal Carolina University.

Strategy 2: Ensuring Student Success

Increase retention and graduation rates by supporting programs and services that enrich the student learning and living environment and broaden the diversity of students seeking Coastal Carolina University as their choice for educational advancement.

Goal 2.1. Talented & Diverse Student Body: Implement a comprehensive enrollment strategy to recruit and retain an academically talented and diverse student body.

**MIGRATION OF TRANSFER STUDENTS  
TO  
COASTAL CAROLINA UNIVERSITY  
FALL SEMESTERS 2006-2010**

<b>SC Transfers From:</b>	<b>2006</b>	<b>2007</b>	<b>2008</b>	<b>2009</b>	<b>2010</b>
The Citadel	0	3	1	2	2
Clemson University	4	2	3	6	3
College of Charleston	5	11	5	13	17
Francis Marion University	8	12	10	6	7
Lander University	4	1	2	1	4
S.C. State University	4	7	4	5	6
USC-Columbia	20	26	22	28	25
USC-Aiken	3	0	2	0	0
USC-Beaufort	0	0	1	0	0
USC-Upstate	1	1	0	1	0
Winthrop University	4	6	3	8	5
Medical University of South Carolina	0	0	0	0	0
Two-year USC Campuses	5	2	4	3	0
Horry-Georgetown Technical College	112	122	160	178	207
Other SC Technical Colleges	51	52	64	63	59
Private Senior Institutions	27	28	37	35	52
Private Two-year Colleges	7	5	6	3	3
Total SC Transfers	255	278	324	352	390
<b>Out-of-State Colleges</b>	360	380	397	393	447
<b>Foreign Colleges</b>	0	0	0	9	3
<b>Total Transfers</b>	<b>615</b>	<b>658</b>	<b>721</b>	<b>754</b>	<b>840</b>

Source: SC Commission on Higher Education

**MIGRATION OF TRANSFER STUDENTS  
FROM  
COASTAL CAROLINA UNIVERSITY  
FALL SEMESTERS 2006-2010**

<b>SC Transfers To:</b>	<b>2006</b>	<b>2007</b>	<b>2008</b>	<b>2009</b>	<b>2010</b>
The Citadel	1	0	1	1	0
Clemson University	15	18	14	19	17
College of Charleston	14	23	16	18	16
Francis Marion University	11	12	12	10	17
Lander University	2	1	0	0	2
S.C. State University	1	2	1	0	1
USC-Columbia	21	22	24	35	26
USC-Aiken	4	1	2	5	2
USC-Beaufort	0	1	0	2	2
USC-Upstate	6	4	5	3	12
Winthrop University	3	3	5	1	5
Medical University of South Carolina	0	1	2	2	0
Two-year USC Campuses	6	4	6	3	4
Horry-Georgetown Technical College	55	68	84	82	99
Other SC Technical Colleges	47	58	46	81	74
Private Senior Institutions	5	7	15	6	8
Private Two-year Colleges	2	0	0	0	0
<b>Total SC Transfers</b>	<b>193</b>	<b>225</b>	<b>233</b>	<b>268</b>	<b>285</b>

Source: SC Commission on Higher Education

**NEW TRANSFER STUDENT RETENTION  
FALL SEMESTERS 2005-2011**

**Summary**

	<b>2005</b>	<b>2006</b>	<b>2007</b>	<b>2008</b>	<b>2009</b>	<b>2010</b>	<b>2011</b>
<b># NEW FULL-TIME TRANSFER STUDENTS</b>	560	583	611	669	690	777	714
Adjustments to Cohort	1						
Adjusted Cohort	559						
<b>AFTER 1ST YEAR</b>							
Graduated	15 2.7%	9 1.5%	11 1.9%	6 0.9%	16 2.3%	4 0.5%	
Returned	378 67.6%	409 70.2%	459 78.7%	490 73.2%	464 67.2%	557 71.7%	
Total Retention	393 70.3%	418 71.7%	470 80.6%	496 74.1%	480 69.6%	561 72.2%	
<b>AFTER 2ND YEAR</b>							
Graduated	82 14.7%	64 11.0%	73 12.5%	72 10.8%	82 11.9%		
Returned	265 47.4%	322 55.2%	332 56.9%	381 57.0%	354 51.3%		
Total Retention	347 62.1%	386 66.2%	405 69.5%	453 67.7%	436 63.2%		
<b>AFTER 3RD YEAR</b>							
Graduated	196 35.1%	224 38.4%	220 37.7%	253 37.8%			
Returned	131 23.4%	139 23.8%	156 26.8%	172 25.7%			
Total Retention	327 58.5%	363 62.3%	376 64.5%	425 63.5%			
<b>AFTER 4TH YEAR</b>							
Graduated	274 49.0%	321 55.1%	336 57.6%				
Returned	45 8.1%	36 6.2%	41 7.0%				
Total Retention	319 57.1%	357 61.2%	377 64.7%				
<b>AFTER 5TH YEAR</b>							
Graduated	309 55.3%	348 59.7%					
Returned	16 2.9%	14 2.4%					
Total Retention	325 58.1%	362 62.1%					
<b>AFTER 6TH YEAR</b>							
Graduated	320 57.2%						
Returned	5 0.9%						
Total Retention	325 58.1%						

Cohort	%
2001	55.5%
2002	53.2%
2003	56.3%
2004	58.0%
2005	57.2%

**FIRST-TIME FULL-TIME TRANSFER  
COMPARISON OF CONTINUING AND NON-CONTINUING STUDENTS  
FALL SEMESTERS 2010 - 2011**

	TRANSFER		CONTINUING		NON-CONTINUING	
	Number	Percent	Number	Percent	Number	Percent
<b>ETHNICITY</b>						
Hispanic/Latino	27	3.48%	19	70.37%	8	29.63%
<b>RACE</b>						
American Indian/Alaskan Native	1	0.13%	0	0.00%	1	100.00%
Asian	8	1.03%	4	50.00%	4	50.00%
Black/African American	149	19.23%	109	73.15%	40	26.85%
Native Hawaiian/Pacific Islander	1	0.13%	1	100.00%	0	0.00%
White	552	71.23%	397	71.92%	155	28.08%
Two or More Races	16	2.06%	11	68.75%	5	31.25%
Non-Resident Alien	21	2.71%	15	71.43%	6	28.57%
Unknown	2	---	1	50.00%	1	50.00%
<b>Total</b>	<b>777</b>	<b>100.00%</b>	<b>557</b>	<b>71.69%</b>	<b>220</b>	<b>28.31%</b>
<b>GENDER</b>						
Men	383	49.29%	266	69.45%	117	30.55%
Women	394	50.71%	291	73.86%	103	26.14%
<b>Total</b>	<b>777</b>	<b>100.00%</b>	<b>557</b>	<b>71.69%</b>	<b>220</b>	<b>28.31%</b>
<b>AGE</b>						
less than 20	175	22.52%	129	73.71%	46	26.29%
20-22	428	55.08%	300	70.09%	128	29.91%
23-24	74	9.52%	54	72.97%	20	27.03%
25-29	57	7.34%	37	64.91%	20	35.09%
30-39	28	3.60%	24	85.71%	4	14.29%
40-49	10	1.29%	10	100.00%	0	0.00%
50+	5	0.64%	3	60.00%	2	40.00%
No Report	0	---	0	---	0	---
<b>Total</b>	<b>777</b>	<b>100.00%</b>	<b>557</b>	<b>71.69%</b>	<b>220</b>	<b>28.31%</b>
<b>GEOGRAPHIC LOCATION</b>						
In-State	401	51.61%	298	74.31%	103	25.69%
Out-of-State	355	45.69%	244	68.73%	111	31.27%
International	21	2.70%	15	71.43%	6	28.57%
<b>Total</b>	<b>777</b>	<b>100.00%</b>	<b>557</b>	<b>71.69%</b>	<b>220</b>	<b>28.31%</b>
<b>IN-STATE</b>						
Five-County Service Area						
Dillon	8	1.03%	5	62.50%	3	37.50%
Georgetown	35	4.50%	25	71.43%	10	28.57%
Horry	190	24.45%	142	74.74%	48	25.26%
Marion	6	0.77%	3	50.00%	3	50.00%
Williamsburg	8	1.03%	7	87.50%	1	12.50%
<b>Total</b>	<b>247</b>	<b>31.79%</b>	<b>182</b>	<b>73.68%</b>	<b>65</b>	<b>26.32%</b>
Other SC Counties						
Charleston	9	1.16%	8	88.89%	1	11.11%
Florence	10	1.29%	8	80.00%	2	20.00%
Greenville	7	0.90%	7	100.00%	0	0.00%
Lexington	11	1.42%	9	81.82%	2	18.18%
York	16	2.06%	12	75.00%	4	25.00%
Other	101	13.00%	72	71.29%	29	28.71%
<b>Total</b>	<b>154</b>	<b>19.82%</b>	<b>116</b>	<b>75.32%</b>	<b>38</b>	<b>24.68%</b>

**FIRST-TIME FULL-TIME TRANSFER  
COMPARISON OF CONTINUING AND NON-CONTINUING STUDENTS  
FALL SEMESTERS 2010 - 2011**

	TRANSFER		CONTINUING		NON-CONTINUING	
	Number	Percent	Number	Percent	Number	Percent
<b>OUT-OF -STATE</b>						
Connecticut	19	2.45%	14	73.68%	5	26.32%
Illinois	3	0.39%	2	66.67%	1	33.33%
Maryland	35	4.50%	23	65.71%	12	34.29%
New Jersey	59	7.59%	43	72.88%	16	27.12%
New York	93	11.97%	61	65.59%	32	34.41%
North Carolina	18	2.32%	14	77.78%	4	22.22%
Ohio	8	1.03%	4	50.00%	4	50.00%
Pennsylvania	26	3.35%	17	65.38%	9	34.62%
Virginia	15	1.93%	11	73.33%	4	26.67%
West Virginia	1	0.13%	1	100.00%	0	0.00%
Other	78	10.04%	54	69.23%	24	30.77%
International	21	2.70%	15	71.43%	6	28.57%
<b>Total</b>	<b>376</b>	<b>48.39%</b>	<b>259</b>	<b>68.88%</b>	<b>117</b>	<b>31.12%</b>
<b>CUMULATIVE CREDIT HOURS TRANSFERRED TO CCU</b>						
Less than 30 hours	268	34.5%	180	67.16%	88	32.84%
30 hours	23	3.0%	17	73.91%	6	26.09%
More than 30 hours	486	62.5%	360	74.07%	126	25.93%
<b>TOTAL</b>	<b>777</b>	<b>100.0%</b>	<b>557</b>	<b>71.69%</b>	<b>220</b>	<b>28.31%</b>

**FIRST-TIME FULL-TIME TRANSFER  
COMPARISON OF CONTINUING AND NON-CONTINUING STUDENTS  
FALL SEMESTERS 2010 - 2011**

COLLEGE/MAJOR	TRANSFER		CONTINUING		NON-CONTINUING	
	Number	Percent	Number	Percent	Number	Percent
<b>BUSINESS ADMINISTRATION</b>						
Accounting	29	3.73%	19	65.52%	10	34.48%
Economics (BA)	1	0.13%	0	0.00%	1	100.00%
Economics (BS)	8	1.03%	6	75.00%	2	25.00%
Finance	16	2.06%	13	81.25%	3	18.75%
Management	91	11.71%	64	70.33%	27	29.67%
Marketing	42	5.41%	31	73.81%	11	26.19%
Resort Tourism Management	16	2.06%	14	87.50%	2	12.50%
<b>Total</b>	<b>203</b>	<b>26.13%</b>	<b>147</b>	<b>72.41%</b>	<b>56</b>	<b>27.59%</b>
<b>EDUCATION</b>						
Early Childhood Education	35	4.50%	28	80.00%	7	20.00%
Elementary Education	25	3.22%	18	72.00%	7	28.00%
Middle Level Education	5	0.64%	3	60.00%	2	40.00%
Physical Education	29	3.73%	18	62.07%	11	37.93%
Special Education	16	2.06%	13	81.25%	3	18.75%
<b>Total</b>	<b>110</b>	<b>14.16%</b>	<b>80</b>	<b>72.73%</b>	<b>30</b>	<b>27.27%</b>
<b>HUMANITIES &amp; FINE ARTS</b>						
Art Studio	5	0.64%	4	80.00%	1	20.00%
Communication	30	3.86%	22	73.33%	8	26.67%
Dramatic Arts	3	0.39%	2	66.67%	1	33.33%
English	8	1.03%	4	50.00%	4	50.00%
Graphic Design	12	1.54%	9	75.00%	3	25.00%
History	22	2.83%	15	68.18%	7	31.82%
Music	5	0.64%	5	100.00%	0	0.00%
Musical Theatre	1	0.13%	1	100.00%	0	0.00%
Philosophy	3	0.39%	2	66.67%	1	33.33%
Political Science	16	2.06%	12	75.00%	4	25.00%
Spanish	4	0.51%	3	75.00%	1	25.00%
Theatre Arts	1	0.13%	1	100.00%	0	0.00%
<b>Total</b>	<b>110</b>	<b>14.03%</b>	<b>80</b>	<b>72.73%</b>	<b>30</b>	<b>27.27%</b>
<b>SCIENCE</b>						
Biochemistry	1	0.13%	1	100.00%	0	0.00%
Biology	62	7.98%	45	72.58%	17	27.42%
Chemistry	6	0.77%	5	83.33%	1	16.67%
Computer Science	16	2.06%	10	62.50%	6	37.50%
Exercise and Sport Science	40	5.15%	30	75.00%	10	25.00%
Health Promotion	18	2.32%	15	83.33%	3	16.67%
Information Systems	4	0.51%	2	50.00%	2	50.00%
Marine Science	48	6.18%	31	64.58%	17	35.42%
Mathematics	8	1.03%	5	62.50%	3	37.50%
Physics	2	0.26%	1	50.00%	1	50.00%
Psychology	52	6.69%	35	67.31%	17	32.69%
Recreation and Sport Management	30	3.86%	21	70.00%	9	30.00%
Sociology	30	3.86%	22	73.33%	8	26.67%
<b>Total</b>	<b>317</b>	<b>40.67%</b>	<b>223</b>	<b>70.35%</b>	<b>94</b>	<b>29.65%</b>
<b>UNIVERSITY COLLEGE</b>						
Interdisciplinary Studies	6	0.77%	5	83.33%	1	16.67%
Undeclared	31	3.99%	22	70.97%	9	29.03%
<b>GRAND TOTAL</b>	<b>777</b>		<b>557</b>		<b>220</b>	

**PROFILE OF FIRST-TIME FULL-TIME TRANSFERS  
FALL 2011**

	TRANSFERS	
	Number	Percent
<b>ETHNICITY</b>		
Hispanic/Latino	15	2.1%
<b>RACE</b>		
American Indian/Alaskan Native	4	0.6%
Asian	5	0.7%
Black/African American	138	19.3%
Native Hawaiian/Pacific Islander	2	0.3%
White	516	72.3%
Two or More Races	16	2.2%
Non-Resident Alien	17	2.4%
Unknown	1	0.1%
<b>Total</b>	<b>714</b>	<b>100.0%</b>
<b>GENDER</b>		
Male	326	45.7%
Female	388	54.3%
<b>Total</b>	<b>714</b>	<b>100.0%</b>
<b>AGE</b>		
less than 20	167	23.4%
20-22	398	55.7%
23-24	67	9.4%
25-29	38	5.3%
30-39	25	3.5%
40-49	14	2.0%
50+	5	0.7%
No Report	0	0.0%
<b>Total</b>	<b>714</b>	<b>100.0%</b>
<b>GEOGRAPHIC LOCATION</b>		
In-State	359	50.3%
Out-of-State	338	47.3%
International	17	2.4%
<b>Total</b>	<b>714</b>	<b>100.0%</b>
<b>IN-STATE</b>		
Five-County Service Area		
Dillon	7	1.0%
Georgetown	12	1.7%
Horry	244	34.2%
Marion	4	0.6%
Williamsburg	3	0.4%
<b>Total</b>	<b>270</b>	<b>37.8%</b>
Other SC Counties		
Charleston	7	1.0%
Florence	13	1.8%
Greenville	6	0.8%
Lexington	6	0.8%
York	6	0.8%
Other	51	7.1%
<b>Total</b>	<b>89</b>	<b>12.5%</b>



	TRANSFERS	
	Number	Percent
<b>OUT-OF -STATE</b>		
Connecticut	14	2.0%
Illinois	9	1.3%
Maryland	43	6.0%
New Jersey	51	7.1%
New York	75	10.5%
North Carolina	13	1.8%
Ohio	7	1.0%
Pennsylvania	23	3.2%
Virginia	25	3.5%
West Virginia	4	0.6%
Other	74	10.4%
International	17	2.4%
<b>Total</b>	<b>355</b>	<b>49.7%</b>

**CUMULATIVE CREDIT HOURS TRANSFERRED TO CCU**

Less than 30 hours	215	30.1%
30 hours	18	2.5%
More than 30 hours	481	67.4%
<b>Total</b>	<b>714</b>	<b>100.0%</b>

COLLEGE/MAJOR	TRANSFERS	
	Number	Percent
<b>BUSINESS ADMINISTRATION</b>		
Accounting	24	3.4%
Economics (BA)	0	0.0%
Economics (BS)	5	0.7%
Finance	18	2.5%
Management	58	8.1%
Marketing	34	4.8%
Resort Tourism Management	19	2.7%
<b>Total</b>	<b>158</b>	<b>22.1%</b>
<b>EDUCATION</b>		
Early Childhood Education	32	4.5%
Elementary Education	18	2.5%
Middle Level Education	11	1.5%
Physical Education	9	1.3%
Special Education	13	1.8%
<b>Total</b>	<b>83</b>	<b>11.6%</b>
<b>HUMANITIES &amp; FINE ARTS</b>		
Art Studio	10	1.4%
Communication	37	5.2%
Dramatic Arts	7	1.0%
English	20	2.8%
Graphic Design	14	2.0%
History	11	1.5%
Music	5	0.7%
Musical Theatre	1	0.1%
Philosophy	4	0.6%
Political Science	18	2.5%
Spanish	1	0.1%
Theatre Arts	1	0.1%
<b>Total</b>	<b>129</b>	<b>18.1%</b>
<b>SCIENCE</b>		
Biochemistry	6	0.8%
Biology	44	6.2%
Chemistry	1	0.1%
Computer Science	17	2.4%
Exercise and Sport Science	66	9.2%
Health Promotion	16	2.2%
Information Systems	7	1.0%
Marine Science	41	5.7%
Mathematics	7	1.0%
Physics	0	0.0%
Psychology	45	6.3%
Recreation Sports Management	36	5.0%
Sociology	22	3.1%
<b>Total</b>	<b>308</b>	<b>43.1%</b>
<b>UNIVERSITY</b>		
Interdisciplinary Studies	17	2.4%
Undeclared	19	2.7%
<b>TOTAL</b>	<b>714</b>	<b>100.0%</b>



# Academics

Coastal Carolina University

---

# Fact Book

Office of Institutional Research, Assessment and Analysis



Fall 2011



# ACADEMICS

## TABLE OF CONTENTS

Academic Highlights .....	49
Undergraduate Major by Class .....	51
Undergraduate Enrollment by Major .....	52
Graduate Enrollment by Major .....	53
Undergraduate Major by Average Age.....	54
Average Size of Lecture Classes by Discipline and Level .....	55
Average Grade Point Ratio by Class .....	56
Grade Distribution by Discipline, Fall 2011 .....	58
Credit Hour and FTE Production by Discipline, Fall 2010 .....	60
Credit Hour and FTE Production by Discipline, Fall 2011 .....	61
Trends in Student/Faculty Ratio.....	62
Total Undergraduate Degrees Awarded by Major.....	63
Total Graduate Degrees Awarded by Major and/or Discipline .....	64
Total Degrees Awarded .....	65



## ACADEMIC HIGHLIGHTS

*Fact Book, 2011*

### Undergraduate Major by Class

In Fall 2011, there were 8,517 undergraduates: 34% were freshmen, 22% were sophomores, 20% were juniors, 22% were seniors, and 3% were non-degree seeking students.

### Enrollment By Major

*Undergraduate:* There was a 28% increase in undergraduate student enrollment between Fall 2006 and Fall 2011.

- Wall College of Business Administration: 4% decrease between Fall 2006 and Fall 2011. The Economics major grew in enrollment over 148%.
- Spadoni College of Education: 5% decrease between Fall 2006 and Fall 2011. The enrollment in Middle Level Education increased 137% and Special Education enrollment increased 68%.
- Edwards College of Humanities and Fine Arts: 53% increase between Fall 2006 and Fall 2011. The Communication major grew in enrollment 219% and enrollment in the Dramatic Arts major increased 35%.
- College of Science: 55% increase between Fall 2006 and Fall 2011. The Physics, Recreation and Sport Management, and Biology majors continue to grow as well with increases in enrollment over the five year period at 575%, 57% and 48% respectively.

*Graduate:* There was a 141% increase in the number of degree-seeking graduate students between Fall 2006 and Fall 2011.

### Average Size of Lecture Classes

In Fall 2011, the average size of lower- and upper-division lecture classes for the University was 27.1 and 22.0 respectively. Over the last three years, the average size of lower-division lecture classes has remained the same and there has been a decrease in the average size of upper-division lecture classes.



## Total Degrees Awarded

In 2010-2011, 1,499 degrees were awarded. Since 1974, the University has awarded 21,186 degrees ranging from the associate to master levels. The Wall College of Business Administration awarded the highest number of degrees (5,930) between 1974 and 2011.

### **The *Academic* section is in alignment with the following supporting key strategies and goals from the *Coastal Carolina University Strategic Plan*:**

#### Strategy 1: Meeting the Educational Needs of Students and Community

Expand degree and non-degree program offerings and formats while maintaining quality in all programs.

Goal 1.1. Quality Teaching and Learning: Promote a student-centered campus environment that strengthens opportunities for exceptional teaching and learning in undergraduate and graduate programs.

Goal 1.3. Improved Access to Education: Enhance accessibility of education at Coastal Carolina University while maintaining quality standards.

#### Strategy 2: Ensuring Student Success

Increase retention and graduation rates by supporting programs and services that enrich the student learning and living environment and broaden the diversity of students seeking Coastal Carolina University as their choice for educational advancement.

Goal 2.3. Supportive Learning & Living Facilities: Provide facilities and services that support a rich academic, residential, athletic, co-curricular, and sustainable environment in which students, faculty, and staff effectively interact.

## UNDERGRADUATE MAJOR BY CLASS FALL 2011

COLLEGE/MAJOR	Freshman	Sophomore 30 Hours Completed	Junior 60 Hours Completed	Senior 90 Hours Completed	Non- Degree Seeking	Total
<b>BUSINESS ADMINISTRATION</b>						
Accounting	95	71	56	74	0	296
Economics (BA)	0	1	2	0	0	3
Economics (BS)	18	14	13	17	0	62
Finance	50	36	51	59	0	196
Management	219	182	147	186	0	734
Marketing	129	106	86	90	0	411
Resort Tourism Management	81	52	51	34	0	218
<b>EDUCATION</b>						
Early Childhood Education	69	68	73	79	0	289
Elementary Education	52	54	55	74	0	235
Middle Level Education	34	30	38	26	0	128
Physical Education	27	22	22	30	0	101
Special Education	29	26	18	26	0	99
<b>HUMANITIES &amp; FINE ARTS</b>						
Art Studio	27	23	25	26	0	101
Communication	129	120	121	109	0	479
Dramatic Arts	23	12	9	10	0	54
English	32	42	37	47	0	158
Graphic Design	68	37	27	28	0	160
History	27	30	54	67	0	178
Music	30	18	21	30	0	99
Musical Theatre	9	9	13	11	0	42
Philosophy	7	5	4	7	0	23
Political Science	66	58	43	66	0	233
Spanish	8	5	9	13	0	35
Theatre Arts	17	4	5	5	0	31
<b>SCIENCE</b>						
Biochemistry	42	5	4	8	0	59
Biology	209	115	102	134	0	560
Chemistry	13	9	4	9	0	35
Computer Science	70	42	36	34	0	182
*Exercise & Sport Science	201	132	123	94	0	550
*Health Promotion	42	55	62	62	0	221
Information Systems	19	9	9	6	0	43
Marine Science	375	127	96	110	0	708
Math	33	13	15	15	0	76
Nursing	0	1	4	22	0	27
Physics	9	7	5	6	0	27
Psychology	141	124	106	80	0	451
*Recreation Sport Management	70	98	87	68	0	323
Sociology	54	50	48	53	0	205
<b>UNIVERSITY COLLEGE</b>						
**Interdisciplinary Studies	0	14	23	42	0	79
Undeclared	349	23	8	6	220	606
<b>GRAND TOTAL</b>	<b>2,873</b>	<b>1,849</b>	<b>1,712</b>	<b>1,863</b>	<b>220</b>	<b>8,517</b>

\*Major moved from the College of Education to the College of Science July 1, 2009.

\*\*Major moved from The College of Humanities and Fine Arts to University College July 1, 2009.

**UNDERGRADUATE ENROLLMENT BY MAJOR  
FALL SEMESTERS 2006-2011**

<b>COLLEGE/MAJOR</b>	<b><u>2006</u></b>	<b><u>2007</u></b>	<b><u>2008</u></b>	<b><u>2009</u></b>	<b><u>2010</u></b>	<b><u>2011</u></b>	<b><u>5-Year % Change</u></b>
<b>BUSINESS ADMINISTRATION</b>							
Accounting	230	258	306	308	319	296	28.7%
Economics (BA)	----	----	----	1	6	3	N/A
Economics (BS)	25	39	52	65	65	62	148.0%
Finance	203	246	248	216	172	196	-3.4%
Management	817	800	823	810	761	734	-10.2%
Marketing	508	503	490	459	435	411	-19.1%
Resort Tourism Management	210	249	260	203	217	218	3.8%
<b>TOTAL</b>	<b>1,993</b>	<b>2,095</b>	<b>2,179</b>	<b>2,062</b>	<b>1,975</b>	<b>1,920</b>	<b>-3.7%</b>
<b>EDUCATION</b>							
Early Childhood Education	277	286	267	292	319	289	4.3%
Elementary Education	243	222	231	255	254	235	-3.3%
Middle Level Education	54	48	62	77	96	128	137.0%
Physical Education	177	183	166	157	154	101	-42.9%
Special Education	59	54	59	64	88	99	67.8%
<b>TOTAL</b>	<b>810</b>	<b>793</b>	<b>785</b>	<b>845</b>	<b>911</b>	<b>852</b>	<b>-5.1%</b>
<b>HUMANITIES &amp; FINE ARTS</b>							
Art Studio	153	140	142	165	104	101	-34.0%
Communication	150	298	371	400	470	479	219.3%
Dramatic Arts	40	36	36	38	46	54	35.0%
English	154	168	152	150	156	158	2.6%
Graphic Design	----	----	----	----	80	160	N/A
History	186	189	180	211	214	178	-4.3%
Music	81	73	86	91	94	99	22.2%
Musical Theatre	40	36	47	50	42	42	5.0%
Philosophy	22	20	13	23	23	23	4.5%
Political Science	187	191	212	225	223	233	24.6%
Spanish	26	28	29	36	35	35	34.6%
Theatre Arts	----	----	----	----	16	31	N/A
<b>TOTAL</b>	<b>1,039</b>	<b>1,179</b>	<b>1,268</b>	<b>1,389</b>	<b>1,503</b>	<b>1,593</b>	<b>53.3%</b>
<b>SCIENCE</b>							
Biochemistry	----	----	----	----	11	59	N/A
Biology	379	454	518	564	598	560	47.8%
Chemistry	30	39	44	51	52	35	16.7%
Computer Science	149	168	182	202	214	182	22.1%
*Exercise & Sport Science	----	----	159	289	389	550	N/A
*Health Promotion	317	352	285	216	217	221	-30.3%
Information Systems	----	----	----	----	10	43	N/A
Marine Science	529	526	567	566	628	708	33.8%
Math	91	89	69	76	87	76	-16.5%
Nursing	----	----	----	----	----	27	N/A
Physics	4	9	22	28	28	27	575.0%
Psychology	392	429	433	420	467	451	15.1%
**Recreation Sport Management	206	249	286	284	312	323	56.8%
Sociology	140	119	130	114	162	205	46.4%
<b>TOTAL</b>	<b>2,237</b>	<b>2,434</b>	<b>2,695</b>	<b>2,810</b>	<b>3,175</b>	<b>3,467</b>	<b>55.0%</b>
<b>UNIVERSITY COLLEGE</b>							
**Interdisciplinary Studies	66	53	50	53	55	79	19.7%
Undeclared	289	297	345	385	355	386	33.6%
Non-Degree Seeking	226	219	251	376	229	220	-2.7%
<b>ENROLLMENT TOTAL</b>	<b>6,660</b>	<b>7,070</b>	<b>7,573</b>	<b>7,920</b>	<b>8,203</b>	<b>8,517</b>	<b>27.9%</b>

\*Major moved from the College of Education to the College of Science July 1, 2009.

\*\*Major moved from The College of Humanities and Fine Arts to University College July 1, 2009.

**GRADUATE ENROLLMENT BY MAJOR  
FALL SEMESTERS 2006-2011**

<b>COLLEGE/MAJOR</b>	<b><u>2006</u></b>	<b><u>2007</u></b>	<b><u>2008</u></b>	<b><u>2009</u></b>	<b><u>2010</u></b>	<b><u>2011</u></b>	<b><u>5-Year % Change</u></b>
<b>BUSINESS ADMINISTRATION</b>							
Master of Accountancy	----	----	----	----	----	20	N/A
Master of Business Administration	32	42	40	39	41	46	43.8%
Business Administration - Accounting	1	10	13	14	15	8	700.0%
<b>TOTAL</b>	<b>33</b>	<b>52</b>	<b>53</b>	<b>53</b>	<b>56</b>	<b>74</b>	<b>124.2%</b>
<b>EDUCATION</b>							
Master of Arts in Teaching:							
Art	6	9	9	7	7	7	16.7%
English	5	4	6	3	13	13	160.0%
Math	2	0	3	5	3	6	200.0%
Music	3	5	6	10	2	7	133.3%
Science	10	3	9	11	13	10	0.0%
Social Studies	19	15	25	24	23	21	10.5%
Master of Education:							
Early Childhood Education*	7	13	20	23	6	---	N/A
Educational Leadership	----	----	----	79	103	133	N/A
Elementary Education*	22	22	41	25	8	---	N/A
Learning and Teaching	----	----	----	----	42	59	N/A
Secondary Education:							
English	2	3	4	6	3	1	-50.0%
Math	5	4	4	4	2	0	-100.0%
Music	1	1	2	0	0	0	-100.0%
Science	2	3	4	4	2	0	-100.0%
Social Studies	2	5	6	3	4	0	-100.0%
Instructional Technology*	7	----	----	----	----	----	N/A
<b>TOTAL</b>	<b>93</b>	<b>87</b>	<b>139</b>	<b>204</b>	<b>231</b>	<b>257</b>	<b>176.3%</b>
<b>HUMANITIES &amp; FINE ARTS</b>							
Master of Arts in Writing	----	----	----	----	10	20	N/A
<b>TOTAL</b>	<b>0</b>	<b>0</b>	<b>0</b>	<b>0</b>	<b>10</b>	<b>20</b>	<b>N/A</b>
<b>SCIENCE</b>							
Coastal Marine and Wetland Studies	33	42	39	37	34	32	-3.0%
<b>TOTAL</b>	<b>33</b>	<b>42</b>	<b>39</b>	<b>37</b>	<b>34</b>	<b>32</b>	<b>-3.0%</b>
<b>Degree Seeking</b>	<b>159</b>	<b>181</b>	<b>231</b>	<b>294</b>	<b>331</b>	<b>383</b>	<b>140.9%</b>
<b>Non-Degree Seeking</b>	<b>1,230</b>	<b>621</b>	<b>350</b>	<b>146</b>	<b>172</b>	<b>184</b>	<b>-85.0%</b>
<b>ENROLLMENT TOTAL</b>	<b>1,389</b>	<b>802</b>	<b>581</b>	<b>440</b>	<b>503</b>	<b>567</b>	<b>-59.2%</b>

\*Program Discontinued

**UNDERGRADUATE MAJOR BY AVERAGE AGE OF STUDENT  
FALL SEMESTERS 2006-2011**

<b>COLLEGE/MAJOR</b>	<b>2006</b>	<b>2007</b>	<b>2008</b>	<b>2009</b>	<b>2010</b>	<b>2011</b>
<b>BUSINESS ADMINISTRATION</b>						
Accounting	22	22	22	22	22	22
Economics (BA)	----	----	----	21	22	23
Economics (BS)	21	22	21	21	22	22
Finance	21	21	22	22	22	22
Management	20	21	21	21	21	21
Marketing	21	21	21	21	21	21
Resort Tourism Management	20	20	20	20	20	20
<b>College Average Age</b>	<b>21</b>	<b>21</b>	<b>21</b>	<b>21</b>	<b>21</b>	<b>21</b>
<b>EDUCATION</b>						
Early Childhood Education	22	22	22	22	22	22
Elementary Education	23	22	22	22	22	22
Middle Level Education	24	24	23	23	22	23
Physical Education	21	21	21	21	21	21
Special Education	23	22	22	22	23	22
<b>College Average Age</b>	<b>22</b>	<b>22</b>	<b>21</b>	<b>22</b>	<b>22</b>	<b>22</b>
<b>HUMANITIES &amp; FINE ARTS</b>						
Art Studio	22	22	22	21	21	21
Communication	21	21	21	21	21	21
Dramatic Arts	22	21	20	20	20	20
English	22	22	23	23	22	22
Graphic Design	----	----	----	----	21	21
History	22	22	22	22	22	24
Music	22	22	21	21	22	22
Musical Theatre	20	20	20	20	20	20
Philosophy	24	24	26	24	22	25
Political Science	22	22	22	23	23	23
Spanish	23	22	25	24	24	23
Theatre Arts	----	----	----	----	19	19
<b>College Average Age</b>	<b>22</b>	<b>22</b>	<b>22</b>	<b>22</b>	<b>22</b>	<b>22</b>
<b>SCIENCE</b>						
Biochemistry	----	----	----	----	21	20
Biology	20	20	20	21	21	21
Chemistry	21	20	21	21	20	21
Computer Science	21	21	21	22	22	21
*Exercise & Sport Science	----	----	20	20	20	20
*Health Promotion	21	21	22	22	22	22
Information Systems	----	----	----	----	23	23
Marine Science	20	20	20	20	20	20
Math	21	20	21	21	21	21
Nursing	----	----	----	----	----	38
Physics	20	19	20	20	21	21
Psychology	21	22	22	22	21	21
*Recreation Sport Management	21	21	21	21	21	21
Sociology	25	23	24	24	24	24
<b>College Average Age</b>	<b>21</b>	<b>21</b>	<b>21</b>	<b>21</b>	<b>21</b>	<b>21</b>
<b>UNIVERSITY COLLEGE</b>						
**Interdisciplinary Studies	32	31	31	33	30	27
Undeclared	19	19	19	19	19	19
Non-Degree Seeking	25	25	25	22	21	19
<b>Coastal Average Age</b>	<b>21</b>	<b>21</b>	<b>21</b>	<b>21</b>	<b>21</b>	<b>21</b>

\*Major moved from the College of Education to the College of Science July 1, 2009.

\*\*Major moved from the College of Humanities and Fine Arts to University College July 1, 2009.

**AVERAGE SIZE OF LECTURE CLASSES  
BY DISCIPLINE AND LEVEL  
FALL SEMESTERS 2009-2011**

COLLEGE/MAJOR	2009		2010		2011	
	Lower Div.	Upper Div.	Lower Div.	Upper Div.	Lower Div.	Upper Div.
<b>BUSINESS ADMINISTRATION</b>						
Business Administration	40.4	36.5	37.8	32.8	36.8	31.1
<b>College Average</b>	<b>40.4</b>	<b>36.5</b>	<b>37.8</b>	<b>32.8</b>	<b>36.8</b>	<b>31.1</b>
<b>EDUCATION</b>						
Physical Education	18.8	23.3	18.4	17.3	19.0	15.8
Teacher Education	23.8	16.8	24.8	17.9	25.7	17.7
<b>College Average</b>	<b>21.3</b>	<b>20.1</b>	<b>21.6</b>	<b>17.6</b>	<b>22.4</b>	<b>16.8</b>
<b>HUMANITIES &amp; FINE ARTS</b>						
Art	20.4	15.9	22.7	13.2	22.0	11.8
English	20.4	19.6	20.6	21.1	20.8	22.2
Foreign Languages	20.3	11.7	19.6	11.5	20.1	9.3
Geography	39.4	18.0	37.9	0.0	38.3	0.0
Graphic Design	--	--	10.6	12.0	11.0	10.4
History	37.4	22.6	34.7	24.2	35.7	23.1
Music	30.2	13.4	25.9	14.0	22.6	13.1
Philosophy/Religion	27.5	23.2	24.4	22.4	25.6	22.6
Political Science	29.2	20.3	26.5	18.0	33.8	15.1
Theatre	21.7	10.7	23.0	12.1	24.1	12.8
<b>College Average</b>	<b>27.4</b>	<b>17.3</b>	<b>24.6</b>	<b>14.9</b>	<b>25.4</b>	<b>14.0</b>
<b>SCIENCE</b>						
Biology	54.6	29.8	58.7	29.5	56.6	28.9
Chemistry	21.1	24.6	22.4	18.7	24.0	15.9
Computer Science	23.7	14.9	22.5	18.0	22.9	13.5
*Exercise Sport Science	31.5	19.6	31.8	25.1	31.6	23.0
*Health Promotion	33.2	23.7	31.0	20.8	31.5	22.3
Math	31.4	11.1	33.5	10.0	33.3	10.2
Marine Science	44.2	30.9	42.9	29.4	40.8	32.7
Nursing	--	--	--	--	0.0	13.3
Physics	34.6	9.5	31.7	5.5	31.1	8.0
Psychology	32.7	30.6	32.7	30.1	36.1	31.5
*Recreation Sports Mgmt.	31.0	23.4	29.5	24.5	27.4	28.3
Sociology	29.0	24.5	31.3	28.0	31.3	29.6
<b>College Average</b>	<b>33.4</b>	<b>22.1</b>	<b>33.5</b>	<b>21.8</b>	<b>30.6</b>	<b>21.4</b>
<b>UNIVERSITY COLLEGE</b>						
	24.9	4.7	27.6	10.0	29.8	8.6
<b>University Average</b>	<b>27.1</b>	<b>23.6</b>	<b>27.0</b>	<b>23.0</b>	<b>27.1</b>	<b>22.0</b>

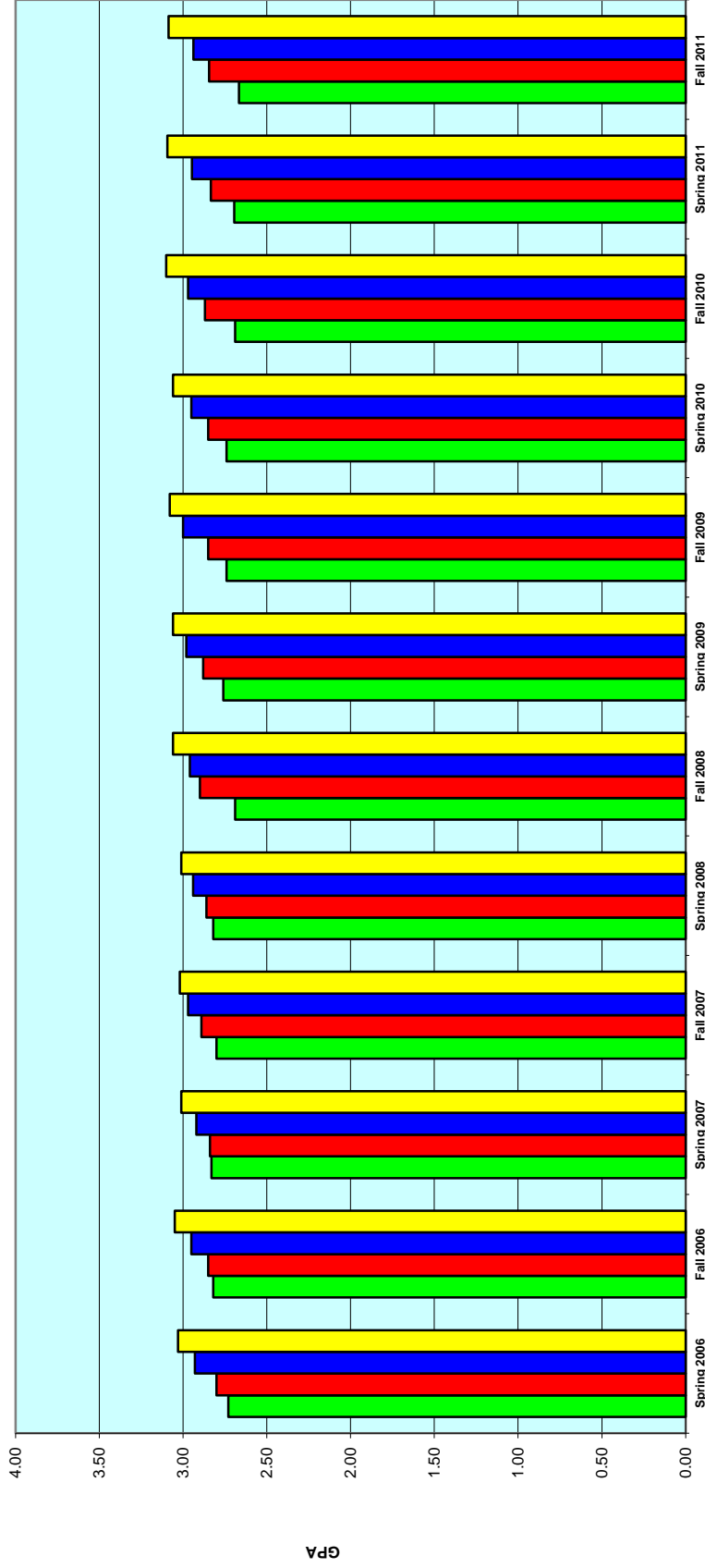
\*Major moved from the College of Education to the College of Science July 1, 2009.

**AVERAGE GRADE POINT RATIO  
BY CLASS  
2003-2011**

<b>Semester</b>	<b>Freshman</b>		<b>Sophomore</b>		<b>Junior</b>		<b>Senior</b>		<b>Total</b>	
	<b>Sem.</b>	<b>Cum.</b>	<b>Sem.</b>	<b>Cum.</b>	<b>Sem.</b>	<b>Cum.</b>	<b>Sem.</b>	<b>Cum.</b>	<b>Sem.</b>	<b>Cum.</b>
<b>Spring 2003</b>	2.62	2.69	2.69	2.78	2.92	2.92	3.07	3.00	2.82	2.85
<b>Fall 2003</b>	2.68	2.70	2.73	2.80	2.94	2.96	3.09	3.04	2.83	2.85
<b>Spring 2004</b>	2.65	2.74	2.64	2.72	2.88	2.91	3.03	3.03	2.79	2.84
<b>Fall 2004</b>	2.61	2.63	2.74	2.81	2.91	2.92	3.09	3.05	2.81	2.83
<b>Spring 2005</b>	2.66	2.71	2.67	2.77	2.87	2.89	3.08	3.04	2.82	2.85
<b>Fall 2005</b>	2.70	2.71	2.73	2.84	2.90	2.96	3.06	3.04	2.83	2.86
<b>Spring 2006</b>	2.67	2.73	2.75	2.80	2.91	2.93	3.09	3.03	2.86	2.87
<b>Fall 2006</b>	2.80	2.82	2.77	2.85	2.92	2.95	3.10	3.05	2.89	2.91
<b>Spring 2007</b>	2.72	2.83	2.78	2.84	2.91	2.92	3.04	3.01	2.87	2.90
<b>Fall 2007</b>	2.79	2.80	2.82	2.89	2.97	2.97	3.05	3.02	2.89	2.90
<b>Spring 2008</b>	2.74	2.82	2.77	2.86	2.96	2.94	3.10	3.01	2.89	2.91
<b>Fall 2008</b>	2.66	2.69	2.81	2.90	2.95	2.96	3.08	3.06	2.85	2.89
<b>Spring 2009</b>	2.68	2.76	2.78	2.88	2.96	2.98	3.13	3.06	2.89	2.92
<b>Fall 2009</b>	2.72	2.74	2.78	2.85	2.95	3.00	3.09	3.08	2.87	2.90
<b>Spring 2010</b>	2.64	2.74	2.77	2.85	2.89	2.95	3.05	3.06	2.84	2.91
<b>Fall 2010</b>	2.65	2.69	2.74	2.87	2.90	2.97	3.13	3.10	2.83	2.88
<b>Spring 2011</b>	2.57	2.69	2.71	2.83	2.87	2.95	3.12	3.09	2.82	2.90
<b>Fall 2011</b>	2.63	2.67	2.70	2.85	2.84	2.94	3.08	3.09	2.79	2.86

Note: Does not include non-degree seeking students.

**AVERAGE CUMULATIVE GRADE POINT RATIO BY CLASS  
2006-2011**



Semesters

■ Freshman ■ Sophomore ■ Junior ■ Senior



**GRADE DISTRIBUTION  
BY DISCIPLINE  
FALL 2011**

Discipline	Total											Avg. GPA			
	A (4.0)	B+ (3.5)	B (3.0)	C+ (2.5)	C (2.0)	D+ (1.5)	D (1.0)	F (0.0)	S	U	W		WF	# Of Grades	
Anthropology	35	17	37	8	18	2	13	24	14%	0	0	15	0	169	2.48
Art Design	40	16	31	9	15	0	1	2	2%	0	0	4	0	118	3.18
Art Education	23	11	11	0	4	0	0	4	7%	0	0	1	0	54	3.24
Art History	92	36	110	23	70	17	37	26	6%	0	0	36	2	449	2.62
Art Studio	296	114	143	42	58	3	12	19	3%	0	0	41	2	730	3.26
Astronomy	20	6	10	8	4	0	2	2	4%	0	0	4	0	56	3.10
Bioinformatics	30	7	10	10	17	3	15	16	15%	0	0	2	0	110	2.34
Biology	917	409	606	253	394	93	129	193	6%	0	0	219	1	3,214	2.87
Bus. Admin.	736	350	892	310	583	78	175	221	6%	0	0	263	4	3,612	2.71
Chemistry	197	108	284	96	203	47	83	67	5%	0	0	182	0	1,267	2.60
Communication	256	110	252	61	132	8	29	32	4%	0	0	25	1	906	2.98
Computer Sci.	495	94	170	36	122	10	46	91	8%	0	0	78	3	1,145	3.01
Economics	120	70	188	69	230	22	77	66	7%	0	0	121	4	967	2.40
Educ - Early Childhood	325	73	27	6	2	0	0	3	1%	16	0	1	0	453	3.80
Educ - Elementary	135	30	29	13	8	1	2	0	0%	20	0	4	0	242	3.60
Educ - Learning Disab.	134	12	10	0	0	0	0	0	0%	0	0	1	0	157	3.90
Educ - Middle Level	39	18	8	2	2	0	1	1	1%	3	0	1	0	75	3.56
Education	295	104	90	42	47	9	14	34	5%	0	0	38	1	674	3.21
English Comp.	417	292	603	206	312	34	91	137	6%	0	0	111	10	2,213	2.75
English Lit.	579	221	463	100	212	20	57	97	5%	0	0	167	4	1,920	2.99
Exercise and Sport Science	353	116	257	74	133	18	38	31	3%	0	0	15	4	1,039	3.03
Finance	11	17	26	14	44	10	12	3	2%	0	0	13	0	150	2.42
French	53	23	55	11	34	4	12	4	2%	0	0	14	1	211	2.90
Geography	121	36	166	24	116	3	15	41	7%	0	0	40	1	563	2.71
Geology	2	3	1	4	0	0	0	0	0%	0	0	0	0	10	3.15
German	7	6	15	5	11	2	1	9	14%	0	0	10	0	66	2.37
Golf Management	176	9	47	0	41	1	13	4	1%	141	0	11	0	443	3.34
Health Promotion	333	184	264	110	154	23	42	58	5%	12	0	38	3	1,221	2.93

## GRADE DISTRIBUTION BY DISCIPLINE, FALL 2011 (CONT'D)

Discipline	Grade Distribution										Total # Of Grades	Avg. GPA		
	A (4.0)	B+ (3.5)	B (3.0)	C+ (2.5)	C (2.0)	D+ (1.5)	D (1.0)	F (0.0)	S	U			W	WF
History	415	231	460	212	396	77	115	131	6%	0	215	5	2,257	2.64
Honors	66	30	27	0	2	0	2	4	3%	0	4	0	135	3.48
Interdisciplinary Studies	28	2	2	0	1	0	0	1	3%	0	1	0	35	3.74
Italian	25	23	23	12	19	6	4	6	5%	0	5	0	123	2.80
Japanese	5	2	4	2	0	0	0	0	0%	0	1	0	14	3.38
Journalism	139	55	173	47	66	7	14	13	2%	0	14	0	528	3.00
Latin	16	7	3	4	2	0	1	0	0%	0	2	0	35	3.41
Marine Sci.	358	234	307	171	163	63	48	63	4%	0	97	4	1,508	2.88
Mathematics	229	121	411	165	503	144	269	411	13%	0	816	8	3,077	1.98
Music	472	57	164	38	98	16	35	27	3%	84	48	2	1,071	3.22
Music Educ.	26	4	11	8	6	0	3	1	2%	0	3	0	62	3.15
Nursing	51	10	5	4	2	0	0	0	0%	0	2	0	74	3.72
Philosophy	282	75	173	78	111	31	25	48	6%	0	43	2	868	2.91
Physical Education	94	30	33	12	18	0	1	11	5%	3	10	1	213	3.24
Phys. Active Living Skills	715	98	62	2	13	0	4	25	3%	0	37	4	960	3.71
Physics	263	98	110	84	96	27	36	30	4%	0	47	0	791	2.96
Political Science	320	124	457	166	346	55	109	99	5%	9	159	5	1,849	2.61
Psychology	480	118	301	100	217	34	82	54	4%	0	56	3	1,445	2.92
Recreation Sports Mgmt	140	63	222	37	142	12	43	24	3%	0	30	1	714	2.75
Religion	64	44	102	42	83	16	30	42	9%	0	40	0	463	2.46
Resort Tourism	97	27	33	17	17	0	1	7	3%	0	5	0	204	3.31
ROTC	73	0	2	0	0	0	0	0	0%	0	28	2	105	3.87
Sociology	238	53	230	59	134	27	40	55	6%	0	51	2	889	2.77
Spanish	391	263	342	149	173	47	56	73	4%	0	127	2	1,623	2.91
Statistics	70	28	106	51	100	11	59	38	7%	0	46	2	511	2.36
Swain Scholars	6	2	0	0	0	0	0	0	0%	0	0	0	8	3.88
Theatre	356	113	175	56	95	10	31	36	3%	120	46	1	1,039	3.12
University	1,128	239	281	88	168	12	35	118	5%	7	70	8	2,154	3.27
Women Studies	22	13	16	0	5	1	1	4	6%	0	8	0	70	3.13
<b>TOTAL</b>	<b>12,806</b>	<b>4,656</b>	<b>9,040</b>	<b>3,140</b>	<b>5,942</b>	<b>1,004</b>	<b>1,961</b>	<b>2,506</b>	<b>6%</b>	<b>415</b>	<b>30</b>	<b>93</b>	<b>45,059</b>	<b>2.86</b>

**CREDIT HOUR AND FTE PRODUCTION  
BY DISCIPLINE  
FALL 2010**

**COLLEGE OF BUSINESS ADMINISTRATION**

<b>DISCIPLINE</b>	<b>Credit Hours Produced</b>	<b>FTE's Produced</b>
Accounting	2,826	188.4
Economics	2,742	182.8
Finance	1,350	90.0
Management	5,245	349.7
Marketing	2,954	196.9
Resort Tourism Mgmt	1,199	79.9
Graduate	441	36.8
<b>Total</b>	<b>16,757</b>	<b>1124.5</b>

**COLLEGE OF EDUCATION**

<b>DISCIPLINE</b>	<b>Credit Hours Produced</b>	<b>FTE's Produced</b>
Early Childhood Education	1,704	113.6
Elementary Education	870	58.0
Middle Level	273	18.2
Physical Education	1,634	108.9
Special Education	213	14.2
Teacher Education	2,595	173.0
Graduate	1,896	158.0
<b>Total</b>	<b>9,185</b>	<b>643.9</b>

**COLLEGE OF HUMANITIES &  
FINE ARTS**

<b>DISCIPLINE</b>	<b>Credit Hours Produced</b>	<b>FTE's Produced</b>
Art	3,703	246.9
Communication	3,708	247.2
English	11,883	792.2
Foreign Language	6,314	420.9
History	7,426	495.1
Journalism	303	20.2
Music	2,432	162.1
Philosophy/Religion	3,927	261.8
Political Sci/Geography	7,128	475.2
Theatre	2,611	174.1
Graduate - ARTS	24	2.0
Graduate - ENGL	84	7
Graduate - MUS	10	0.8
<b>Total</b>	<b>49,553</b>	<b>3305.5</b>

**COLLEGE OF SCIENCE**

<b>DISCIPLINE</b>	<b>Credit Hours Produced</b>	<b>FTE's Produced</b>
Biology	6,240	416.0
Chemistry	3,191	212.7
Computer Science	3,268	217.9
*Health/EXSS	6,451	430.1
Marine Science	3,309	220.6
Math/Statistics	10,971	731.4
Physics	1,029	68.6
Psychology	4,180	278.7
*Recreation	1,553	103.5
ROTC	107	7.1
Sociology	2,502	166.8
Graduate - BIOL	89	7.4
Graduate - CSCI	60	5.0
Graduate - MSCI	144	12.0
<b>Total</b>	<b>43,094</b>	<b>2877.8</b>

Note: Credit hours and FTEs produced for University (UNIV) courses taught by administrative staff are excluded.  
\*Major moved from the College of Education to the College of Science July 1, 2009.

**CREDIT HOUR AND FTE PRODUCTION  
BY DISCIPLINE  
FALL 2011**

**COLLEGE OF BUSINESS ADMINISTRATION**

<b>DISCIPLINE</b>	<b>Credit Hours Produced</b>	<b>FTE's Produced</b>
Accounting	2,736	182.4
Economics	3,278	218.5
Finance	1,506	100.4
Management	4,989	332.6
Marketing	3,035	202.3
Resort Tourism Mgmt	1,005	67.0
Graduate	536	44.7
<b>Total</b>	<b>17,085</b>	<b>1147.9</b>

**COLLEGE OF EDUCATION**

<b>DISCIPLINE</b>	<b>Credit Hours Produced</b>	<b>FTE's Produced</b>
Early Childhood Education	1,432	95.5
Elementary Education	1,185	79.0
Middle Level	201	13.4
Physical Education	924	61.6
Special Education	387	25.8
Teacher Education	2,490	166.0
Graduate	2,048	170.7
<b>Total</b>	<b>8,667</b>	<b>611.9</b>

**COLLEGE OF HUMANITIES &  
FINE ARTS**

<b>DISCIPLINE</b>	<b>Credit Hours Produced</b>	<b>FTE's Produced</b>
Art	4,198	279.9
Communication	4,199	279.9
English	12,000	800.0
Foreign Language	6,371	424.7
History	7,658	510.5
Journalism	207	13.8
Music	2,311	154.1
Philosophy/Religion	4,191	279.4
Political Sci/Geography	7,379	491.9
Theatre	2,763	184.2
Graduate - ARTS	45	3.8
Graduate - ENGL	156	13.0
Graduate - MUS	24	2.0
Graduate - PSCI	3	0.3
<b>Total</b>	<b>51,505</b>	<b>3437.2</b>

**COLLEGE OF SCIENCE**

<b>DISCIPLINE</b>	<b>Credit Hours Produced</b>	<b>FTE's Produced</b>
Biology	7,227	481.8
Chemistry	3,253	216.9
Computer Science	3,393	226.2
*Health/EXSS/HLPR	7,648	509.9
Marine Science	3,446	229.7
Math/Statistics	11,203	746.9
Nursing	213	14.2
Physics	1,150	76.7
Psychology	4,096	273.1
*Recreation	2,231	148.7
ROTC	169	11.3
Sociology	2,602	173.5
Graduate - BIOL	70	5.8
Graduate - CSCI	123	10.3
Graduate - MSCl	178	14.8
<b>Total</b>	<b>47,002</b>	<b>3139.7</b>

Note: Credit hours and FTEs produced for University (UNIV) courses taught by administrative staff are excluded.  
\*Major moved from the College of Education to the College of Science July 1, 2009.

**TRENDS IN STUDENT / FACULTY RATIO  
FALL SEMESTERS 1992-2011**

YEAR				CHANGE FROM PRECEDING YEAR	
	FTE STUDENTS	FTE FACULTY	RATIO of FTE STUDENT/ FTE FACULTY	FTE STUDENTS	FTE FACULTY
1992	3,457	190.99	18.1	3.5%	-0.6%
1993	3,575	198.08	18.0	3.4%	3.7%
1994	3,646	207.63	17.6	2.0%	4.8%
1995	3,654	198.18 205.74 *	18.4 17.7*	0.2%	-4.6%
1996	3,793	198.09 213.80 *	19.1 17.7*	3.8%	0.0%
1997	3,874	225.44 **	17.2	2.1%	5.4%
1998	3,938	213.30	18.5	1.7%	-5.4%
1999	3,991	222.49	17.9	1.3%	4.3%
2000	4,101	228.64	17.9	2.8%	2.8%
2001	4,487	231.96	19.3	9.4%	1.5%
2002	5,095	264.02	19.3	13.6%	13.8%
2003	5,795	301.34	19.2	13.7%	14.1%
2004	6,141	320.38	19.2	6.0%	6.3%
2005	6,576	339.08	19.4	7.1%	5.8%
2006	6,944	361.45	19.2	5.6%	6.6%
2007	7,177	397.69	18.1	3.4%	10.0%
2008	7,610	435.50	17.5	6.0%	9.5%
2009	7,865	452.67	17.4	3.4%	3.9%
2010	8,302	493.20	16.8	5.6%	9.0%
2011	8,720	502.06	17.4	5.0%	1.8%

\*Recalculated FTE displayed for comparative purposes only.

\*\*Methodology used in calculation of FTE faculty changed by South Carolina Commission on Higher Education to ensure consistency between institutions.

**TOTAL UNDERGRADUATE DEGREES AWARDED BY MAJOR  
BETWEEN  
2006 AND 2011\***

COLLEGE/MAJOR	2006-07	2007-08	2008-09	2009-10	2010-11
<b>BUSINESS ADMINISTRATION</b>					
Accounting	39	30	42	58	63
Economics (BS)	2	5	9	11	17
Finance	42	49	47	58	37
Management	119	122	130	160	151
Marketing	110	104	124	107	103
Resort Tourism Management	22	32	31	35	27
<b>Total</b>	<b>334</b>	<b>342</b>	<b>383</b>	<b>429</b>	<b>398</b>
<b>EDUCATION</b>					
Early Childhood Education	37	55	50	47	57
Elementary Education	37	40	24	39	42
Middle Level Education	1	3	6	14	11
Physical Education	24	21	34	29	19
Special Education	5	12	13	7	11
<b>Total</b>	<b>104</b>	<b>131</b>	<b>127</b>	<b>136</b>	<b>140</b>
<b>HUMANITIES AND FINE ARTS</b>					
Art Studio	34	28	42	24	21
Communication	25	39	77	75	102
Dramatic Arts	8	9	9	5	7
English	26	37	39	33	45
Graphic Design	---	---	---	8	11
History	38	55	35	43	59
Music	9	13	15	12	15
Musical Theatre	5	7	9	9	5
Philosophy	2	2	4	4	7
Political Science	35	39	34	45	56
Spanish	6	4	5	6	9
<b>Total</b>	<b>188</b>	<b>233</b>	<b>269</b>	<b>264</b>	<b>337</b>
<b>SCIENCE</b>					
Biology	55	62	61	67	70
Chemistry	8	7	1	6	4
Computer Science	18	19	18	10	23
**Exercise & Sport Science	---	---	2	15	41
**Health Promotion	55	67	82	74	64
Information Systems	---	---	---	1	5
Marine Science	63	57	67	63	84
Math	13	7	6	7	9
Physics	---	---	1	1	1
Psychology	78	67	85	114	85
**Recreation Sports Management	24	19	46	42	58
Sociology	44	40	41	23	33
<b>Total</b>	<b>358</b>	<b>345</b>	<b>410</b>	<b>423</b>	<b>477</b>
<b>UNIVERSITY COLLEGE</b>					
***Interdisciplinary Studies	20	25	33	37	27
<b>Total</b>	<b>20</b>	<b>25</b>	<b>33</b>	<b>37</b>	<b>27</b>
<b>GRAND TOTAL</b>	<b>1004</b>	<b>1076</b>	<b>1222</b>	<b>1289</b>	<b>1379</b>

\*Based on IPEDS (July 1 - June 30).

\*\*Major moved from the College of Education to the College of Science July 1, 2009.

\*\*\*Major moved from The College of Humanities and Fine Arts to University College July 1, 2009.

**TOTAL GRADUATE DEGREES AWARDED BY MAJOR  
BETWEEN  
2006 AND 2011\***

COLLEGE/MAJOR	2006-07	2007-08	2008-09	2009-10	2010-11
<b>BUSINESS ADMINISTRATION</b>					
Business Administration	---	13	20	13	22
Business Administration - Accounting	---	3	1	7	9
<b>Total</b>	<b>0</b>	<b>16</b>	<b>21</b>	<b>20</b>	<b>31</b>
<b>EDUCATION</b>					
Master of Arts in Teaching					
Art	8	6	7	7	7
English	6	5	5	4	2
Mathematics	4	1	1	3	4
Music	3	2	5	4	6
Science	9	10	5	7	11
Social Studies	18	12	12	17	18
Master of Education					
Early Childhood Education	7	5	4	10	6
Elementary Education	11	8	15	10	12
Learning and Teaching	---	---	---	---	4
Secondary Education					
English	1	3	1	0	2
Mathematics	3	4	2	0	2
Music	1	0	2	1	0
Natural Science	0	4	1	2	2
Social Studies	1	1	1	0	2
Education Technology	2	5	0	0	0
<b>Total</b>	<b>74</b>	<b>66</b>	<b>61</b>	<b>65</b>	<b>78</b>
<b>SCIENCE</b>					
Coastal Marine and Wetland Studies	1	4	13	7	11
<b>Total</b>	<b>1</b>	<b>4</b>	<b>13</b>	<b>7</b>	<b>11</b>
<b>GRAND TOTAL</b>	<b>75</b>	<b>86</b>	<b>95</b>	<b>92</b>	<b>120</b>

\*Based on IPEDS (July 1 - June 30).

**TOTAL DEGREES AWARDED  
BETWEEN  
1974 AND 2011\***

Associate in Arts (A.A.)	216
Associate in Science (A.S.)	226
A.S. Nursing	354
Bachelor of Arts (B.A.)	4,986
B.A.E.D. Education	2,467
B.A.I.S. Interdisciplinary Studies	1,108
Bachelor of Science (B.S.)	3,988
B.S. Business Administration	5,842
B.S. Education	308
B.S. Interdisciplinary Studies	189
B.S. Physical Education	715
MBA	88
M.Ed.	359
M.A.T.	286
M.S. Coastal Marine & Wetland Studies	43
M.S. Instructional Technology	11
<b>TOTAL</b>	<b>21,186</b>

\*1974 was the first year in which a baccalaureate degree was awarded at The University





# Faculty

Coastal Carolina University

# Fact Book

Office of Institutional Research, Assessment and Analysis



Fall 2011



**FACULTY**  
**TABLE OF CONTENTS**

Faculty Highlights.....	69
Summary of Employees Holding Faculty Rank.....	71
Faculty Profile by College .....	72
Faculty Profile by Academic Discipline, Fall 2010.....	74
Faculty Profile by Academic Discipline, Fall 2011.....	75
Profile of Full-Time Teaching Faculty by Rank .....	76
Rank and Degree of Full-Time Employees Holding Faculty Rank .....	77
Full-Time Faculty by College and Rank .....	78
FTE Teaching Faculty by College and Rank.....	79
Full-Time Faculty Nine-Month Salary Trends.....	80
Full-Time Faculty Average Salary Comparison by Rank.....	81
Student Credit Hours Taught by Full-Time Faculty .....	82
Student Credit Hours Taught by FTE Faculty .....	83



## FACULTY HIGHLIGHTS

*Fact Book, 2011*

### Faculty Profile

In Fall 2011, there were 376 full-time employees with faculty rank, representing an increase of 2% from Fall 2010. Of the full-time faculty, 43% were female and 57% male.

Of full-time employees with faculty rank, 77% possessed terminal degrees and 58% were tenured. Of this same group: 20% were professors, 26% were associate professors, 29% were assistant professors and 25% were instructors/other. Approximately 66% of FTE students were taught by full-time faculty.

### Full-Time Faculty by College and Rank

In Fall 2011, each college had at least or more than 70% of its full-time teaching staff holding the rank of Assistant Professor or higher. The breakdown for each college is as follows: Wall College of Business Administration (85%), Spadoni College of Education (81%), Edwards College of Humanities and Fine Arts (70%), and College of Science (73%).

**The *Faculty* section is in alignment with the following supporting key strategy and goals from the *Coastal Carolina University Strategic Plan*:**

Strategy 2: Ensuring Student Success

Increase retention and graduation rates by supporting programs and services that enrich the student learning and living environment and broaden the diversity of students seeking Coastal Carolina University as their choice for educational advancement.

Goal 2.3. Supportive Learning & Living Facilities: Provide facilities and services that support a rich academic, residential, athletic, co-curricular, and sustainable environment in which students, faculty, and staff effectively interact.

Goal 3.1. Highly Qualified Faculty & Staff: Recruit and retain highly qualified and diverse faculty and staff.



**SUMMARY OF EMPLOYEES  
HOLDING FACULTY RANK  
FALL 2011**

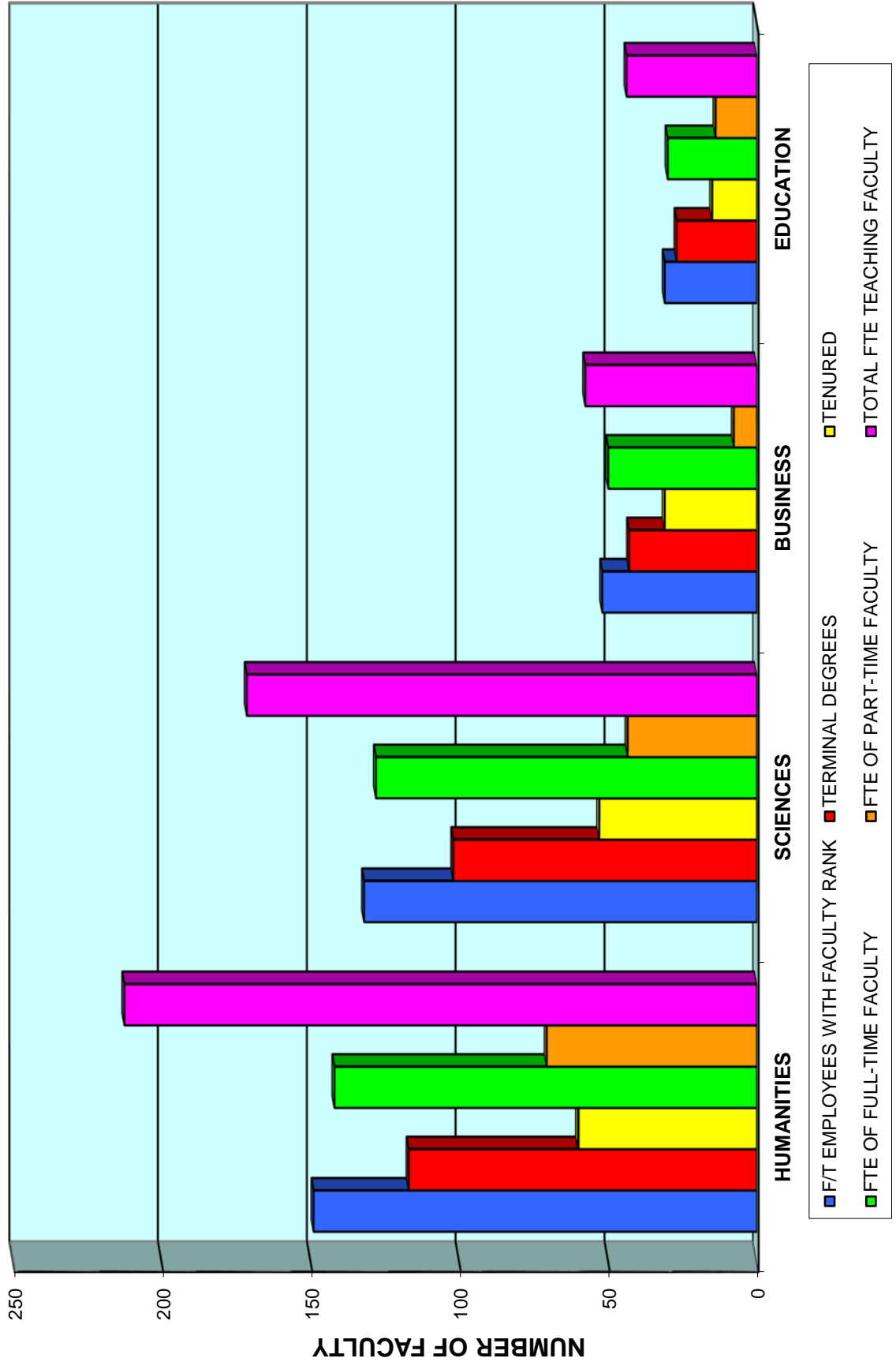
Full-Time Teaching Faculty	351
Faculty on Leave/Special Assignment	4
Part-Time Teaching Faculty	268
<b>Total Teaching Faculty</b>	<b>623</b>
Administrators	12
Librarians	9
<b>Total Full-Time Employees Holding Faculty Rank</b>	<b>376</b>
<b>Total Faculty Employees</b>	<b>644</b>
Total FTE of Full-Time Faculty	351.00
Total FTE of Part-Time Faculty	151.06
<b>Total FTE</b>	<b>502.06</b>



**COASTAL CAROLINA UNIVERSITY  
FACULTY PROFILE BY COLLEGE, FALL 2011**

	BUSINESS	EDUCATION	HUMANITIES	SCIENCE	ACADEMIC COLLEGE SUB-TOTAL	LIBRARY/ OTHER	GRAND TOTAL
<b>FULL-TIME EMPLOYEES W/FAC. RANK</b> (INCLUDES DEANS, ADMIN., & FAC. ON LEAVE)							
MALE	35	12	83	83	213	3	216
FEMALE	17	19	66	49	151	9	160
TOTAL	52	31	149	132	364	12	376
TERMINAL DEGREES	43	27	117	102	289	2	291
% TERMINAL DEGREES	83%	87%	79%	77%	79%	17%	77%
TENURED (of eligible Tenure-Track)	31	15	60	53	159	5	164
% TENURED	70%	60%	57%	55%	59%	45%	58%
<b>RANK</b>							
PROFESSOR	14	4	31	23	72	2	74
ASSOCIATE PROFESSOR	21	12	29	32	94	5	99
ASSISTANT PROFESSOR	9	9	45	41	104	4	108
INSTRUCTOR/OTHER	8	6	44	36	94	1	95
TOTAL	52	31	149	132	364	12	376
<b>PART-TIME FACULTY</b>							
	13	34	96	91	234	34	268
<b>FTE TEACHING FACULTY</b>							
FTE OF FULL-TIME FACULTY	50.00	30.00	142.00	128.00	350.00	1.00	351.00
FTE OF PART-TIME FACULTY	7.72	13.85	70.52	43.48	135.56	15.49	151.06
TOTAL FTE TEACHING FACULTY	57.72	43.85	212.52	171.48	485.56	16.49	502.06
<b>FTE STUDENTS</b>							
TOTAL FTE STUDENTS TAUGHT	1147.94	611.93	3437.47	3139.65	8336.99	383.47	8720.46
FTE STUDENTS TAUGHT BY FT FAC.	936.07	411.55	2139.13	2191.05	5677.80	45.40	5723.20
% FTE STUDENTS TAUGHT BY FT FAC.	81.54%	67.25%	62.23%	69.79%	68.10%	11.84%	65.63%
STUDENT/FACULTY FTE RATIO	19.89	13.96	16.17	18.31	17.17	23.25	17.37

COASTAL CAROLINA UNIVERSITY  
 FACULTY PROFILE BY COLLEGE  
 FALL SEMESTER, 2011



**FACULTY PROFILE  
BY ACADEMIC DISCIPLINE, FALL 2010**

<u>DISCIPLINE</u>	Number of Full-Time Faculty*			# FTE Teaching Faculty	# Terminal Degrees		% Terminal Degrees	# Masters Degrees		% Masters	Number Tenured	% Tenured ***
	M	F	T		Full-Time Faculty**	Full-Time Faculty		Full-Time Faculty				
Art/Graphic Design	6	8	14	18.98	14	100%	0	0%	7	58%		
Biology	13	8	21	25.15	19	90%	2	10%	9	56%		
Bus. & Econ.	38	14	52	57.14	43	83%	9	17%	28	67%		
Chemistry	11	2	13	15.24	11	85%	2	15%	4	67%		
Communication	4	5	9	12.24	5	56%	4	44%	3	60%		
Computer Sci.	8	4	12	16.07	5	42%	7	58%	3	43%		
English/Jour.	14	19	33	52.91	26	79%	7	21%	11	55%		
Foreign Lang.	6	10	16	26.50	9	56%	7	44%	5	71%		
Geography	1	1	2	3.49	0	0%	2	100%	0	0%		
Health Prom./Exercise Sci.	4	7	11	22.29	9	82%	2	18%	4	44%		
History	10	6	16	22.23	13	81%	3	19%	7	58%		
Marine Sci./Geology	15	5	20	21.66	17	85%	3	15%	10	71%		
Math./Stat.	16	8	24	27.74	13	54%	11	46%	5	45%		
Music	11	4	15	20.28	11	73%	4	27%	9	69%		
Physical Education	1	2	3	8.64	2	67%	1	33%	2	100%		
Physics/Astron.	4	2	6	6.66	5	83%	1	17%	2	40%		
Politics	10	3	13	21.05	12	92%	1	8%	6	46%		
Psychology	7	4	11	13.65	11	100%	0	0%	7	64%		
Recreation	3	3	6	6.50	5	83%	1	17%	1	20%		
Religion & Philos.	7	3	10	15.48	9	90%	1	10%	3	38%		
Soc./Anthropology	4	3	7	7.50	7	100%	0	0%	3	43%		
Teacher Educ.	10	19	29	40.89	27	93%	2	7%	14	52%		
Theatre	4	5	9	13.90	8	89%	1	11%	4	57%		
Other	0	3	3	17.03	1	33%	2	67%	2	100%		
<b>TOTAL</b>	<b>207</b>	<b>148</b>	<b>355</b>	<b>493.20</b>	<b>282</b>	<b>79%</b>	<b>73</b>	<b>21%</b>	<b>149</b>	<b>57%</b>		

**NOTES:**

\*Includes Administrators (11), excludes Librarians (10) and faculty on leave and special assignment (2).

\*\*Includes all terminal degrees whether or not in teaching area.

\*\*\*Percentage based on only faculty eligible for tenure (excludes visiting, lecturers, instructors).

**FACULTY PROFILE  
BY ACADEMIC DISCIPLINE, FALL 2011**

DISCIPLINE	Number of Full-Time Faculty*			# FTE Teaching Faculty	# Terminal Degrees Full-Time Faculty**	% Terminal Degrees	# Masters Degrees Full-Time Faculty		Number Tenured	% Tenured ***
	M	F	T				Masters	%		
							Masters	%		
Art/Graphic Design	9	7	16	21.98	16	100%	0	0%	7	58%
Biology	14	6	20	26.22	18	90%	2	10%	10	63%
Bus. & Econ.	35	17	52	57.72	43	83%	9	17%	31	74%
Chemistry	10	2	12	13.00	9	75%	3	25%	4	67%
Communication	5	7	12	13.49	7	58%	5	42%	2	40%
Computer Sci.	8	4	12	16.81	6	50%	6	50%	3	43%
English/Jour.	16	20	36	53.22	28	78%	8	22%	12	60%
Foreign Lang.	8	7	15	24.71	9	60%	6	40%	4	57%
Geography	1	1	2	3.49	0	0%	2	100%	0	0%
Health P/Exer. Scie/Nursing/Pals	5	8	13	28.11	11	85%	2	15%	5	56%
History	10	6	16	23.22	13	81%	3	19%	9	75%
Marine Sci./Geology	14	7	21	22.16	17	81%	4	19%	10	71%
Math./Stat.	14	10	24	28.48	12	50%	12	50%	6	55%
Music	11	4	15	20.66	11	73%	4	27%	9	69%
Physical Education	1	2	3	4.25	2	67%	1	33%	2	100%
Physics/Astron.	5	1	6	7.00	6	100%	0	0%	3	60%
Politics	11	4	15	20.96	13	87%	2	13%	8	62%
Psychology	7	4	11	13.32	11	100%	0	0%	8	73%
Recreation	2	3	5	7.24	4	80%	1	20%	1	20%
Religion & Philos.	6	3	9	15.97	8	89%	1	11%	2	25%
Soc./Anthropology	4	3	7	7.50	7	100%	0	0%	2	29%
Teacher Educ.	11	17	28	39.60	25	89%	3	11%	13	48%
Theatre	6	4	10	14.81	9	90%	1	10%	4	57%
Other/ROTC	0	3	3	18.13	1	33%	2	67%	2	100%
<b>TOTAL</b>	<b>213</b>	<b>150</b>	<b>363</b>	<b>502.06</b>	<b>286</b>	<b>79%</b>	<b>77</b>	<b>21%</b>	<b>157</b>	<b>60%</b>

**NOTES:**

\*Includes Administrators (12), excludes Librarians (9) and faculty on leave and special assignment (4).

\*\*Includes all terminal degrees whether or not in teaching area.

\*\*\*Percentage based on only faculty eligible for tenure (excludes visiting, lecturers, instructors).

**PROFILE OF FULL-TIME TEACHING FACULTY  
BY RANK, FALL 2011**

<u>RANK</u>	<b>Doctoral/Terminal</b>		<b>Masters</b>		<u>TOTAL</u>
	<u>MEN</u>	<u>WOMEN</u>	<u>MEN</u>	<u>WOMEN</u>	
Professor	45	18	0	0	63
Associate	57	35	1	0	93
Assistant	52	44	4	4	104
Instructor	0	0	7	6	13
Lecturer	19	10	19	34	82
<b>TOTAL</b>	<b>173</b>	<b>107</b>	<b>31</b>	<b>44</b>	<b>355</b>

NOTES:

Includes faculty on leave and special assignment (4).  
Excludes Administrators (12) and Librarians (9).

**RANK AND DEGREE OF  
FULL-TIME EMPLOYEES HOLDING FACULTY RANK  
FALL 2011**

<u>DISCIPLINE</u>	Professor		Associate Professor		Assistant Professor		Instructor/Lecturer		Total
	T	M	T	M	T	M	T	M	
Art/Graphic Design	5	0	2	0	6	0	3	0	16
Biology	5	0	5	0	5	0	3	2	20
Bus. & Econ.	14	0	21	0	8	1	0	8	52
Chemistry	1	0	3	0	2	0	3	3	12
Communication	2	0	0	0	5	0	0	5	12
Computer Science	1	0	1	0	4	2	0	4	12
English	6	0	5	0	9	1	8	7	36
Foreign Language	0	0	4	0	1	0	4	6	15
Geography	0	0	0	0	0	1	0	1	2
Health P/Exer Sc/Pals/Nurs.	2	0	6	0	3	0	0	2	13
History	5	0	4	0	4	0	0	3	16
Library	1	1	0	3	0	4	0	0	9
Marine Science	7	0	3	0	4	0	3	4	21
Math	1	0	5	0	6	1	0	11	24
Music	6	0	2	1	3	1	0	2	15
Other	0	0	0	2	0	0	1	0	3
Physical Education	0	0	2	0	0	0	0	1	3
Physics	1	0	2	0	3	0	0	0	6
Politics	4	0	4	0	5	1	0	1	15
Psychology	3	0	5	0	3	0	0	0	11
Recreation	0	0	1	0	3	0	0	1	5
Religion/Philosophy	1	0	1	0	5	0	1	1	9
Sociology	2	0	0	0	5	0	0	0	7
Teacher Ed.	4	0	10	0	9	0	2	3	28
Theatre	1	0	4	0	3	0	1	1	10
<b>TOTAL</b>	<b>72</b>	<b>1</b>	<b>90</b>	<b>6</b>	<b>96</b>	<b>12</b>	<b>29</b>	<b>66</b>	<b>372</b>

NOTES:  
Includes Deans, Administrators, and Librarians (21). Excludes faculty on leave and special assignment (4).  
T = Terminal degree , M = Masters degree.

**FULL-TIME FACULTY BY COLLEGE AND RANK  
FALL SEMESTERS 2002-2011**

<b>COLLEGE AND RANK</b>	<b>2002</b>	<b>2003</b>	<b>2004</b>	<b>2005</b>	<b>2006</b>	<b>2007</b>	<b>2008</b>	<b>2009</b>	<b>2010</b>	<b>2011</b>
<b>BUSINESS ADMINISTRATION</b>										
Professor	7	7	7	8	6	9	10	13	15	14
Associate	8	10	10	11	12	7	11	13	16	21
Assistant	8	10	12	14	16	22	18	14	12	9
Instructor/Other	2	2	3	0	1	3	7	8	9	8
<b>Total</b>	<b>25</b>	<b>29</b>	<b>32</b>	<b>33</b>	<b>35</b>	<b>41</b>	<b>46</b>	<b>48</b>	<b>52</b>	<b>52</b>
<b>EDUCATION</b>										
Professor	7	8	7	7	7	7	6	6	2	4
Associate	7	6	7	8	12	14	14	14	14	12
Assistant	8	9	15	15	13	15	18	19	13	9
Instructor/Other	4	3	3	3	3	1	4	5	3	6
<b>Total</b>	<b>26</b>	<b>26</b>	<b>32</b>	<b>33</b>	<b>35</b>	<b>37</b>	<b>42</b>	<b>44</b>	<b>32</b>	<b>31</b>
<b>HUMANITIES &amp; FINE ARTS</b>										
Professor	22	22	23	22	25	23	29	29	28	31
Associate	18	18	21	25	24	23	23	27	28	29
Assistant	24	33	30	29	30	39	37	37	43	45
Instructor/Other	16	18	15	17	19	18	33	33	39	44
<b>Total</b>	<b>80</b>	<b>91</b>	<b>89</b>	<b>93</b>	<b>98</b>	<b>103</b>	<b>122</b>	<b>126</b>	<b>138</b>	<b>149</b>
<b>SCIENCE</b>										
Professor	17	17	18	18	15	17	15	16	20	23
Associate	21	20	21	25	25	23	20	23	28	32
Assistant	25	24	30	31	32	36	44	41	47	41
Instructor/Other	16	16	14	14	17	19	25	28	37	36
<b>Total</b>	<b>79</b>	<b>77</b>	<b>83</b>	<b>88</b>	<b>89</b>	<b>95</b>	<b>104</b>	<b>108</b>	<b>132</b>	<b>132</b>
<b>LIBRARY</b>										
Professor	1	1	2	2	2	2	3	3	3	2
Associate	4	5	3	3	2	2	3	3	3	5
Assistant	2	2	2	2	4	4	3	3	6	4
Instructor/Other	2	1	1	1	0	0	0	0	1	1
<b>Total</b>	<b>9</b>	<b>9</b>	<b>8</b>	<b>8</b>	<b>8</b>	<b>8</b>	<b>9</b>	<b>9</b>	<b>13</b>	<b>12</b>
<b>GRAND TOTAL</b>	<b>219</b>	<b>232</b>	<b>244</b>	<b>255</b>	<b>265</b>	<b>284</b>	<b>323</b>	<b>335</b>	<b>367</b>	<b>376</b>

**NOTE:**

Includes Deans, Administrators, Librarians and faculty on leave and special assignment.

**FTE TEACHING FACULTY BY COLLEGE AND RANK  
FALL SEMESTERS 2005-2011**

<b>COLLEGE AND RANK</b>	<b>2005</b>	<b>2006</b>	<b>2007</b>	<b>2008</b>	<b>2009</b>	<b>2010</b>	<b>2011</b>
<b>BUSINESS ADMINISTRATION</b>							
Professor	6.00	4.00	7.00	8.00	11.00	13.00	12.00
Associate	11.00	10.00	6.00	11.00	13.00	16.00	21.00
Assistant	14.00	15.00	22.00	18.00	14.00	12.00	9.00
Instructor / Lecturer	0.00	1.00	3.00	7.00	8.00	9.00	8.00
Other	7.42	10.80	12.71	12.08	7.93	7.14	7.72
<b>Total</b>	<b>38.42</b>	<b>40.80</b>	<b>50.71</b>	<b>56.08</b>	<b>53.93</b>	<b>57.14</b>	<b>57.72</b>
<b>EDUCATION</b>							
Professor	4.00	5.00	4.00	2.00	2.00	1.00	3.00
Associate	8.00	11.00	13.00	12.00	9.00	13.00	12.00
Assistant	15.00	13.00	15.00	18.00	12.00	13.00	9.00
Instructor / Lecturer	3.00	3.00	1.00	4.00	2.00	3.00	6.00
Other	26.39	31.47	32.69	34.14	13.29	19.53	13.85
<b>Total</b>	<b>56.39</b>	<b>63.47</b>	<b>65.69</b>	<b>70.14</b>	<b>38.29</b>	<b>49.53</b>	<b>43.85</b>
<b>HUMANITIES &amp; FINE ARTS</b>							
Professor	19.00	21.00	20.00	24.00	26.00	26.00	27.00
Associate	24.00	22.00	23.00	21.00	25.00	26.00	26.00
Assistant	29.00	30.00	39.00	37.00	37.00	43.00	45.00
Instructor / Lecturer	17.00	19.00	18.00	33.00	33.00	39.00	44.00
Other	48.35	49.65	61.03	60.21	69.98	73.04	70.52
<b>Total</b>	<b>137.35</b>	<b>141.65</b>	<b>161.03</b>	<b>175.21</b>	<b>190.98</b>	<b>207.04</b>	<b>212.52</b>
<b>SCIENCE</b>							
Professor	14.00	13.00	15.00	12.00	15.00	17.00	20.00
Associate	24.00	24.00	21.00	18.00	26.00	28.00	31.00
Assistant	31.00	32.00	36.00	44.00	48.00	47.00	41.00
Instructor / Lecturer	14.00	17.00	19.00	25.00	31.00	37.00	36.00
Other	20.05	22.37	19.34	21.58	36.54	35.69	43.48
<b>Total</b>	<b>103.05</b>	<b>108.37</b>	<b>110.34</b>	<b>120.58</b>	<b>156.54</b>	<b>164.69</b>	<b>171.48</b>
<b>UNIVERSITY COLLEGE</b>							
Professor	0.25	0.50	0.25	0.25	0.25	0.00	0.75
Associate	0.00	0.00	0.00	0.00	0.25	0.00	0.25
Assistant	0.00	0.25	0.25	0.25	0.50	0.50	0.83
Instructor / Lecturer	0.00	0.00	0.00	0.00	0.00	1.00	1.00
Other	3.63	6.42	9.41	12.99	11.95	13.29	13.67
<b>Total</b>	<b>3.88</b>	<b>7.16</b>	<b>9.91</b>	<b>13.49</b>	<b>12.94</b>	<b>14.79</b>	<b>16.50</b>
<b>GRAND TOTAL</b>	<b>339.08</b>	<b>361.45</b>	<b>397.69</b>	<b>435.50</b>	<b>452.67</b>	<b>493.20</b>	<b>502.06</b>



**FULL-TIME FACULTY NINE-MONTH SALARY TRENDS  
2004-2011**

	Average Salary #	2004-05	Average Salary #	2005-06	Average Salary #	2006-07	Average Salary #	2007-08	Average Salary #	2008-09	Average Salary #	2009-10	Average Salary #	2010-11	Average Salary #	2011-12
<b>BY RANK</b>																
Professor	41	\$69,248	43	\$71,845	43	\$73,065	47	\$78,667	48	\$82,159	55	\$83,036	58	\$82,640	63	\$84,168
Associate	57	\$56,374	67	\$59,385	68	\$61,752	64	\$63,887	65	\$68,617	75	\$68,397	84	\$68,877	93	\$70,535
Assistant	87	\$48,248	89	\$51,395	90	\$53,684	112	\$57,786	117	\$58,005	111	\$57,468	115	\$56,232	104	\$58,234
Instructor	27	\$32,564	25	\$34,470	26	\$37,008	22	\$41,300	21	\$44,910	18	\$46,076	16	\$45,593	13	\$46,112
<b>BY GENDER</b>																
Female	83	\$47,765	86	\$51,630	87	\$53,970	95	\$57,317	102	\$60,413	101	\$62,498	104	\$62,280	107	\$66,102
Male	129	\$55,541	138	\$58,434	140	\$60,281	150	\$64,811	149	\$66,992	158	\$67,043	169	\$66,852	166	\$68,947
<b>BY DEGREE</b>																
Doctoral/ Terminal	165	\$55,864	181	\$58,689	192	\$60,839	212	\$64,134	221	\$66,598	235	\$66,922	250	\$66,531	251	\$69,100
Masters	47	\$40,676	43	\$43,752	35	\$41,531	33	\$47,588	30	\$47,523	24	\$49,097	23	\$49,660	22	\$53,373
<b>TOTAL</b>	<b>212</b>	<b>\$52,497</b>	<b>224</b>	<b>\$55,822</b>	<b>227</b>	<b>\$57,862</b>	<b>245</b>	<b>\$61,905</b>	<b>251</b>	<b>\$64,277</b>	<b>259</b>	<b>\$65,270</b>	<b>273</b>	<b>\$65,110</b>	<b>273</b>	<b>\$67,832</b>

Note:  
Excludes Administrators (12), librarians (9), faculty on leave (4), and lecturers (82).

**FULL-TIME FACULTY AVERAGE SALARY COMPARISON BY RANK  
FALL SEMESTERS 2004-2009**

<b>CATEGORY</b>	<b>PROFESSOR</b>	<b>ASSOCIATE</b>	<b>ASSISTANT</b>	<b>INSTRUCTOR</b>	<b>ALL RANKS</b>
-----------------	------------------	------------------	------------------	-------------------	------------------

**Fall 2004**

Coastal Carolina	\$69,248	\$56,374	\$48,248	\$32,564	\$52,497
South Carolina	\$65,020	\$55,208	\$46,566	\$39,510	\$51,523
Southern States (SREB)*	\$65,572	\$54,595	\$46,029	\$36,761	\$51,318
National**	\$85,629	\$63,408	\$54,533	\$39,726	\$65,875

**Fall 2005**

Coastal Carolina	\$71,845	\$59,385	\$51,395	\$34,470	\$55,822
South Carolina	\$68,794	\$58,249	\$49,580	\$40,210	\$54,216
Southern States (SREB)*	\$67,480	\$56,313	\$48,871	\$37,070	\$53,449
National**	\$89,442	\$65,817	\$56,801	\$41,153	\$68,454

**Fall 2006**

Coastal Carolina	\$73,231	\$62,123	\$53,996	\$37,009	\$58,227
South Carolina	\$69,020	\$57,637	\$49,673	\$43,586	\$53,744
Southern States (SREB)*	\$69,463	\$58,243	\$49,521	\$39,735	\$54,937
National**	\$83,124	\$64,759	\$55,868	\$41,815	\$64,580

**Fall 2007**

Coastal Carolina	\$78,667	\$63,887	\$57,786	\$41,300	\$61,905
South Carolina	\$72,555	\$59,439	\$51,038	\$44,602	\$54,925
Southern States (SREB)*	\$72,976	\$60,271	\$50,262	\$39,967	\$56,062
National**	\$87,248	\$68,083	\$58,270	\$43,713	\$67,533

**Fall 2008**

Coastal Carolina	\$82,159	\$68,617	\$58,005	\$44,910	\$64,277
South Carolina	\$74,213	\$60,118	\$51,041	\$44,615	\$55,216
Southern States (SREB)*	\$75,325	\$61,721	\$51,686	\$41,546	\$57,308
National**	\$91,755	\$71,299	\$60,759	\$44,863	\$70,953

**Fall 2009**

Coastal Carolina	\$83,036	\$68,397	\$57,468	\$46,076	\$65,270
South Carolina	\$73,289	\$57,589	\$50,954	\$44,511	\$54,236
Southern States (SREB)*	\$76,350	\$61,373	\$52,433	\$42,023	\$57,804
National**	\$92,313	\$71,645	\$61,495	\$45,504	\$71,500

\*Southern Regional Educational Board (SREB) average salaries reported for public baccalaureate institutions (SREB VI).

\*\*College and University Professional Association (CUPA) averages for noncollective bargaining institutions, as published in CUPA's National Faculty Salary Survey by discipline and rank in public colleges and universities.

**STUDENT CREDIT HOURS TAUGHT  
BY FULL-TIME FACULTY  
FALL SEMESTERS 2009-2011**

Discipline	2009				2010				2011			
	Student Credit		Average Credit		Student Credit		Average Credit		Student Credit		Average Credit	
	# Full-Time Faculty	Hours Taught by Full-Time Faculty	Hours Taught by Full-Time Faculty	Hours Taught by Full-Time Faculty	# Full-Time Faculty	Hours Taught by Full-Time Faculty	Hours Taught by Full-Time Faculty	Hours Taught by Full-Time Faculty	# Full-Time Faculty	Hours Taught by Full-Time Faculty	Hours Taught by Full-Time Faculty	Hours Taught by Full-Time Faculty
<b>College of Business Administration</b>												
Business Administration	46.00	15,213.00	330.72	50.00	14,211.00	284.22	50.00	13,907.00	278.14			
<b>College Total</b>	<b>46.00</b>	<b>15,213.00</b>	<b>330.72</b>	<b>50.00</b>	<b>14,211.00</b>	<b>284.22</b>	<b>50.00</b>	<b>13,907.00</b>	<b>278.14</b>			
<b>College of Education</b>												
Physical Education	3.00	819.00	273.00	27.00	4,986.00	184.67	3.00	608.00	202.67			
Teacher Education	25.00	4,317.00	172.68	3.00	627.00	209.00	27.00	5,209.00	192.93			
<b>College Total</b>	<b>28.00</b>	<b>5,136.00</b>	<b>183.43</b>	<b>30.00</b>	<b>5,613.00</b>	<b>187.10</b>	<b>30.00</b>	<b>5,817.00</b>	<b>193.90</b>			
<b>College of Humanities and Fine Arts</b>												
Art	15.00	2,565.00	171.00	11.00	2,494.00	226.73	13.00	2,531.00	194.69			
Communication/Journalism	7.00	2,006.00	286.57	9.00	2,784.00	309.33	13.00	3,818.00	293.69			
English	32.00	6,828.00	213.38	31.00	7,017.00	226.35	33.00	7,587.00	229.91			
Foreign Languages	14.00	3,498.00	249.86	16.00	3,818.00	238.63	16.00	3,941.00	246.31			
Geography	1.00	537.00	537.00	2.00	1,014.00	507.00	2.00	1,044.00	522.00			
Graphic Design				3.00	270.00	90.00	3.00	341.00	113.67			
History	14.00	4,500.00	321.43	17.00	4,744.00	279.06	16.00	4,490.00	280.63			
Music	13.00	1,095.00	84.23	15.00	1,210.00	80.67	15.00	1,089.00	72.60			
Philosophy/Religion	9.00	2,409.00	267.67	10.00	2,406.00	240.60	10.00	2,343.00	234.30			
Politics	9.00	2,628.00	292.00	12.00	3,124.00	260.33	14.00	3,303.00	235.93			
Theatre	9.00	1,065.00	118.33	9.00	1,244.00	138.22	10.00	1,336.00	133.60			
<b>College Total</b>	<b>123.00</b>	<b>27,131.00</b>	<b>220.58</b>	<b>135.00</b>	<b>30,125.00</b>	<b>223.15</b>	<b>145.00</b>	<b>31,823.00</b>	<b>219.47</b>			
<b>College of Science</b>												
Biology	17.00	3,939.00	231.71	20.00	4,545.00	227.25	19.00	4,464.00	234.95			
Chemistry	13.00	2,971.00	228.54	13.00	2,652.00	204.00	12.00	3,027.00	252.25			
Computer Science	11.00	1,868.00	169.82	12.00	2,159.00	179.92	12.00	2,093.00	174.42			
*Health Prom/Exercise Science/PALS	9.00	2,230.00	247.78	11.00	2,692.00	244.73	11.00	2,955.00	268.64			
Math	23.00	7,997.00	347.70	24.00	9,432.00	393.00	24.00	9,181.00	382.54			
Marine Science	18.00	3,431.00	190.61	20.00	2,634.00	131.70	21.00	3,269.00	155.67			
Nursing							2.00	153.00	76.50			
Physics	6.00	886.00	147.67	7.00	850.00	121.43	6.00	888.00	148.00			
Psychology	10.00	2,861.00	286.10	10.00	2,690.00	269.00	10.00	2,654.00	265.40			
*Recreation Sports Management	4.00	1,055.00	263.75	6.00	1,430.00	238.33	5.00	1,499.00	299.80			
Sociology	7.00	2,040.00	291.43	7.00	2,352.00	336.00	7.00	2,425.00	346.43			
<b>College Total</b>	<b>118.00</b>	<b>29,278.00</b>	<b>248.12</b>	<b>130.00</b>	<b>31,436.00</b>	<b>241.82</b>	<b>129.00</b>	<b>32,608.00</b>	<b>252.78</b>			
<b>Other</b>	--	--	--	1.00	358.00	358.00	1.00	234.00	234.00			
<b>University Total</b>	<b>315.00</b>	<b>76,758.00</b>	<b>243.68</b>	<b>346.00</b>	<b>81,743.00</b>	<b>236.25</b>	<b>355.00</b>	<b>84,389.00</b>	<b>237.72</b>			

\*Major moved from the College of Education to the College of Science June 1, 2009.

**STUDENT CREDIT HOURS TAUGHT  
BY FTE FACULTY  
FALL SEMESTERS 2008-2010**

Discipline	2009			2010			2011		
	# FTE Faculty	Student Credit Hours Taught by FTE Faculty	Average Credit Hours Taught by FTE Faculty	# FTE Faculty	Student Credit Hours Taught by FTE Faculty	Average Credit Hours Taught by FTE Faculty	# FTE Faculty	Student Credit Hours Taught by FTE Faculty	Average Credit Hours Taught by FTE Faculty
<b>College of Business Administration</b>									
Business Administration	53.93	18,174.00	337.01	57.14	16,757.00	293.27	57.72	17,085.00	296.00
<b>College Total</b>	<b>53.93</b>	<b>18,174.00</b>	<b>337.01</b>	<b>57.14</b>	<b>16,757.00</b>	<b>293.27</b>	<b>57.72</b>	<b>17,085.00</b>	<b>296.00</b>
<b>College of Education</b>									
Physical Education	7.81	1,904.00	243.67	8.64	1,634.00	189.03	4.25	924.00	217.67
Teacher Education	38.29	7,539.00	196.88	40.89	7,551.00	184.67	39.60	7,743.00	195.52
<b>College Total</b>	<b>46.11</b>	<b>9,443.00</b>	<b>204.81</b>	<b>49.53</b>	<b>9,185.00</b>	<b>185.43</b>	<b>43.85</b>	<b>8,667.00</b>	<b>197.66</b>
<b>College of Humanities and Fine Arts</b>									
Art/Graphic Design	18.74	3,243.00	173.10	18.98	3,727.00	196.36	21.98	4,243.00	193.07
Communication	9.24	2,612.00	282.65	12.24	3,708.00	303.02	13.49	4,199.00	311.18
English/Journalism	50.43	11,340.00	224.87	51.67	11,967.00	231.62	53.22	12,363.00	232.29
Foreign Languages	27.45	6,666.00	242.88	27.74	6,617.00	238.50	24.71	6,371.00	257.82
Geography	2.74	1,353.00	493.26	3.49	1,713.00	490.83	3.49	1,739.00	497.71
History	18.73	6,492.00	346.59	22.23	7,426.00	334.13	23.22	7,658.00	329.79
Music	20.80	2,469.00	118.68	20.28	2,442.00	120.44	20.66	2,335.00	113.03
Philosophy/Religion	12.98	3,966.00	305.55	15.48	3,927.00	253.71	15.97	4,191.00	262.40
Politics	15.72	4,893.00	311.28	21.05	5,415.00	257.24	20.96	5,643.00	269.25
Theatre	14.15	2,473.00	174.82	13.90	2,611.00	187.88	14.81	2,763.00	186.51
<b>College Total</b>	<b>190.98</b>	<b>45,507.00</b>	<b>238.29</b>	<b>207.04</b>	<b>49,553.00</b>	<b>239.34</b>	<b>212.52</b>	<b>51,505.00</b>	<b>242.35</b>
<b>College of Science</b>									
Biology	23.16	6,096.00	263.25	25.15	6,329.00	251.69	26.22	7,297.00	278.29
Chemistry	13.66	3,152.00	230.68	15.24	3,191.00	209.37	13.00	3,253.00	250.31
Computer Science	15.32	3,240.00	211.54	16.07	3,328.00	207.13	16.81	3,516.00	209.11
*Health Prom/Exercise Science/PALS	19.54	5,958.00	304.90	22.29	6,451.00	289.44	25.70	7,648.00	297.62
Math	26.74	9,500.00	355.34	27.74	10,971.00	395.57	28.48	11,203.00	393.34
Marine Science	18.25	3,482.00	190.80	21.66	3,453.00	159.42	22.16	3,624.00	163.52
Nursing							2.42	213.00	88.20
Physics	6.00	1,203.00	200.63	6.66	1,029.00	154.41	7.00	1,150.00	164.38
Psychology	14.07	4,444.00	315.92	13.65	4,180.00	306.18	13.32	4,096.00	307.51
*Recreation	4.50	1,166.00	259.23	6.50	1,553.00	239.00	7.24	2,231.00	308.11
ROTC				2.24	107.00	47.75	1.63	169.00	103.49
Sociology	7.50	2,184.00	291.28	7.50	2,502.00	333.69	7.50	2,602.00	347.03
<b>College Total</b>	<b>148.72</b>	<b>40,425.00</b>	<b>271.82</b>	<b>164.69</b>	<b>43,094.00</b>	<b>261.67</b>	<b>171.48</b>	<b>47,002.00</b>	<b>274.10</b>
<b>University/Other</b>									
University/Other	12.94	3,830.00	295.89	14.79	5,261.00	355.69	16.49	5,752.00	348.73
<b>University Total</b>	<b>452.67</b>	<b>117,379.00</b>	<b>259.30</b>	<b>493.20</b>	<b>123,850.00</b>	<b>251.12</b>	<b>502.06</b>	<b>130,011.00</b>	<b>258.96</b>

\*Major moved from the College of Education to the College of Science June 1, 2009.



# Resources

Coastal Carolina University

---

# Fact Book

Office of Institutional Research, Assessment and Analysis



Fall 2011



# RESOURCES

## TABLE OF CONTENTS

Resources Highlights .....	87
Annual Tuition and Residence Hall Fees.....	89
SC Public Institutions Academic Year Costs Tuition and Required Fees, 2011-2012 Academic Year Comparison of In-State to Out-of-State .....	90
Total Financial Aid Received by Coastal Carolina University Students from All Sources.....	92
Buildings Inventory.....	94





## RESOURCES HIGHLIGHTS

*Fact Book, 2011*

The Resources section includes Coastal Carolina University's annual tuition and residence hall fees, a comparison of in-state and out-of-state South Carolina senior public institution costs, total financial aid disbursements to Coastal Carolina University students by source, and the University's building inventory.

- For Fall 2011, Coastal Carolina University had the fourth lowest tuition increase at 3.95% from Fall 2010 among South Carolina comprehensive universities.
- Coastal Carolina University students experienced an 80.7% increase in total financial aid received over the five (5) year period from 2005-2006 to 2010-2011.
- For Fall 2011, Coastal Carolina University operated/managed 80 facilities with 132 classrooms and laboratories and 635,830 net square feet for educational and general (E&G) usage.

**The *Resources* section is in alignment with the following supporting key strategies and goals from the *Coastal Carolina University Strategic Plan*:**

Strategy 1: Meeting the Educational Needs of Students and Community

Expand degree and non-degree program offerings and formats while maintaining quality in all programs.

Goal 1.3. Improved Access to Education: Enhance accessibility of education at Coastal Carolina University while maintaining quality standards.

Strategy 2: Ensuring Student Success

Increase retention and graduation rates by supporting programs and services that enrich the student learning and living environment and broaden the diversity of students seeking Coastal Carolina University as their choice for educational advancement.

Goal 2.3. Supportive Learning & Living Facilities: Provide facilities and services that support a rich academic, residential, athletic, co-curricular, and sustainable environment in which students, faculty, and staff effectively interact.

#### Strategy 4: Ensuring Financial Viability and Managed Growth

Ensure responsible financial management practices which are based on a clear commitment to enrollment growth and consistent with the mission of the University.

Goal 4.1. Comprehensive Financial Plan: Develop, implement, and communicate a comprehensive financial plan that includes projections of tuition, state support, grant support, and philanthropy.

Goal 4.2. Broadened Base of Financial Support: Broaden the University's base of financial support.



**ANNUAL TUITION AND RESIDENCE HALL FEES  
1993 - 2011**

YEAR	IN-STATE		OUT-OF-STATE		Residence Hall Fees
	Full-Time Student	Per Credit Hour	Full-Time Student	Per Credit Hour	
1993-94	\$2,470	\$103	\$6,280	\$262	\$2,500
1994-95	\$2,710	\$115	\$7,000	\$295	\$2,640
1995-96	\$2,800	\$120	\$7,470	\$312	\$2,720
1996-97	\$2,910	\$125	\$7,840	\$330	\$4,300
1997-98	\$3,100	\$130	\$8,320	\$348	\$4,640
1998-99	\$3,220	\$135	\$8,790	\$370	\$4,800
1999-00	\$3,340	\$140	\$9,280	\$385	\$4,970
2000-01	\$3,500	\$147	\$9,810	\$408	\$5,240
2001-02	\$3,770	\$159	\$10,680	\$445	\$5,450
2002-03	\$4,350	\$182	\$11,760	\$491	\$5,610
2003-04	\$5,190	\$215	\$12,870	\$540	\$5,770
2004-05	\$6,100	\$250	\$14,200	\$595	\$5,970
2005-06	\$6,860	\$290	\$15,100	\$630	\$6,280
2006-07	\$7,500	\$315	\$16,190	\$675	\$6,690
2007-08	\$7,600	\$317	\$16,590	\$691	\$6,680
2008-09	\$8,650	\$360	\$18,090	\$754	\$7,080
2009-10	\$8,950	\$373	\$18,770	\$782	\$7,200
2010-11	\$9,390	\$382	\$20,270	\$830	\$7,350
2011-12	\$9,760	\$407	\$21,560	\$898	\$7,700

**NOTE:**

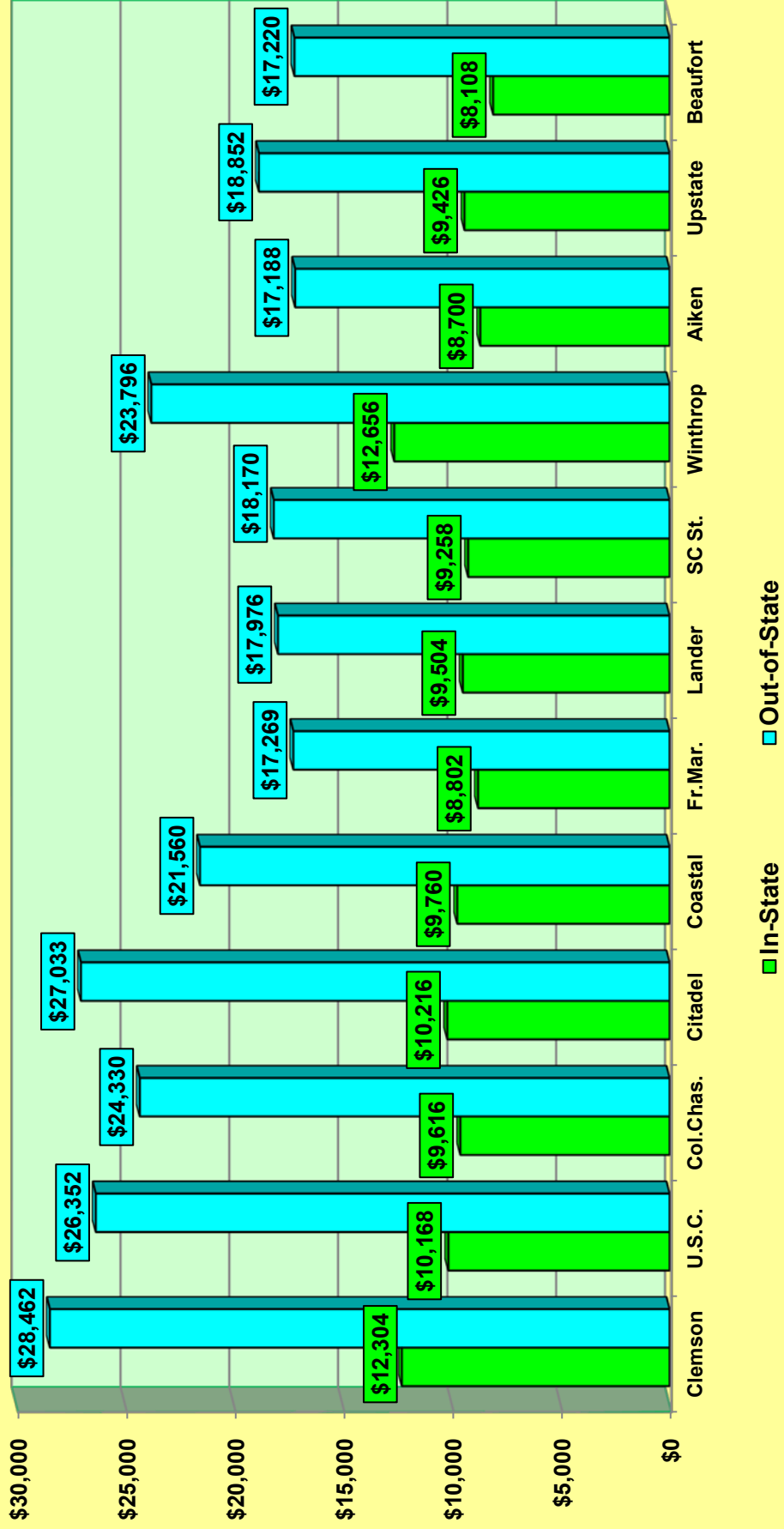
Beginning in 1996-1997, Residence Hall Fees Include required board plan and health service fee.

**SC PUBLIC INSTITUTIONS ACADEMIC YEAR COSTS  
TUITION AND REQUIRED FEES  
COMPARISON OF IN-STATE TO OUT-OF-STATE  
2011-2012**

	<u>IN-STATE</u>	<u>OUT-OF-STATE</u>
The Citadel	\$10,216	\$27,033
Clemson University	\$12,304	\$28,462
Coastal Carolina University	\$9,760	\$21,560
College of Charleston	\$9,616	\$24,330
Francis Marion University	\$8,802	\$17,269
Lander University	\$9,504	\$17,976
South Carolina State University	\$9,258	\$18,170
USC - Aiken	\$8,700	\$17,188
USC - Beaufort	\$8,108	\$17,220
USC - Columbia	\$10,168	\$26,352
USC - Upstate	\$9,426	\$18,852
Winthrop University	\$12,656	\$23,796

Source: SC Commission on Higher Education

# SC PUBLIC UNIVERSITIES Undergraduate Tuition Comparison, In-State & Out-of-State 2011-2012

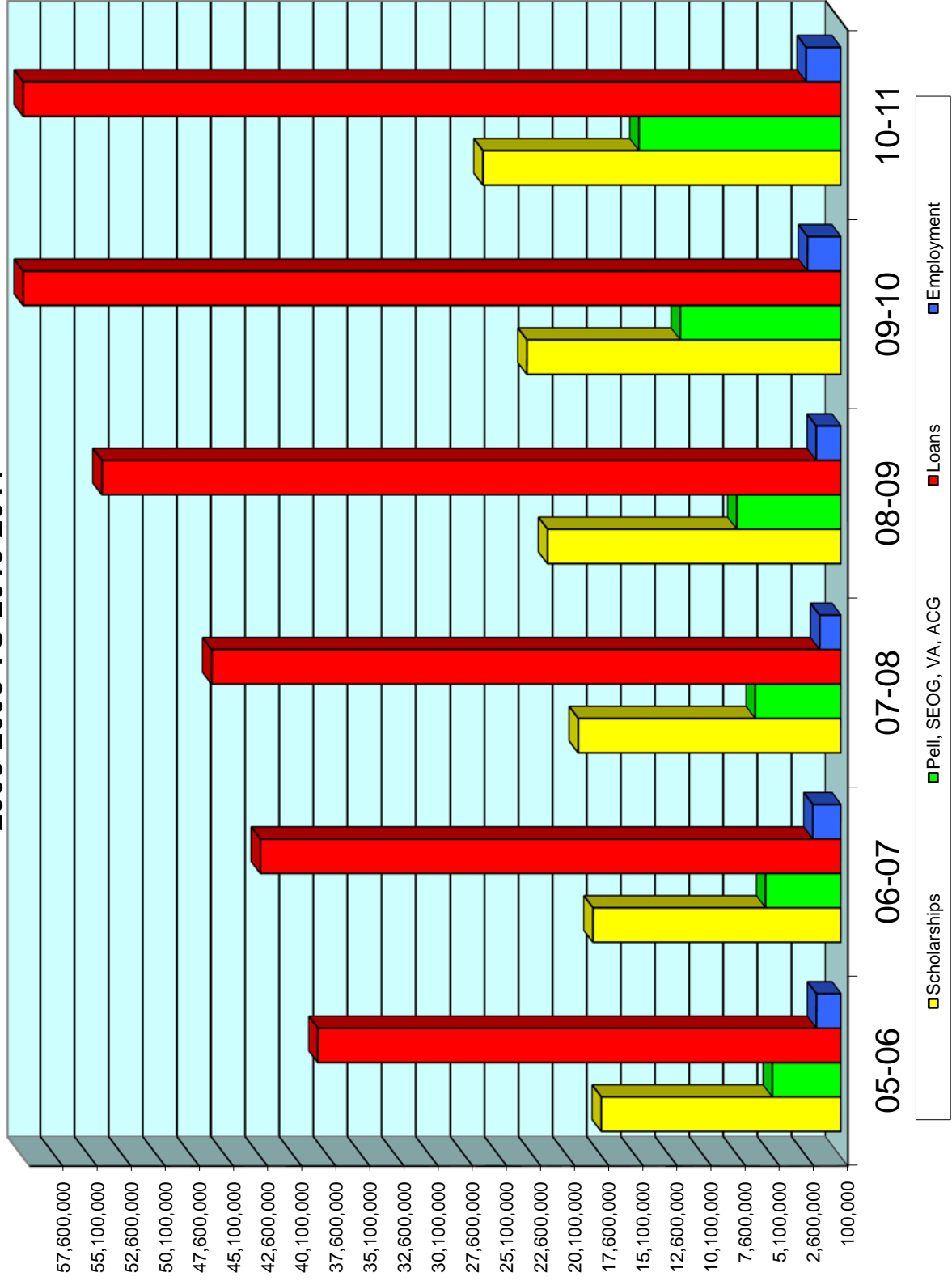


**TOTAL FINANCIAL AID  
RECEIVED BY COASTAL STUDENTS  
FROM ALL SOURCES  
2005-2006 to 2010-2011**

<u>Federal Financial Aid</u>	<u>2005-2006</u>	<u>2006-2007</u>	<u>2007-2008</u>	<u>2008-2009</u>	<u>2009-10</u>	<u>2010-11</u>	<u>5-Year % Change</u>
Pell Grant	4,231,475	4,228,209	4,899,483	6,214,063	10,530,900	13,481,078	218.59%
ACG/SMART	---	269,938	499,547	514,818	839,730	1,036,716	NA
Supplemental Grants	283,748	503,965	362,864	575,274	521,684	402,760	41.94%
College Work Study	201,844	221,523	216,483	254,986	285,740	296,624	46.96%
Perkins Loans	249,273	262,630	212,103	182,174	125,671	79,000	-68.31%
Bank Loans	28,986,749	29,498,164	30,707,506	37,624,861	49,225,282	56,693,532	95.58%
VA Benefits	629,000	632,862	633,063	444,504	---	---	NA
<b>TOTAL FEDERAL AID</b>	<b>34,582,089</b>	<b>35,617,291</b>	<b>37,531,049</b>	<b>45,810,680</b>	<b>61,529,007</b>	<b>71,989,710</b>	<b>108.17%</b>
<b>Other Aid</b>							
Scholarships - Found. & Comm.	817,803	995,286	1,110,276	1,302,927	1,527,222	1,898,596	132.16%
Athletics Scholarships	3,979,256	4,525,450	4,743,585	5,010,118	5,238,282	5,709,290	43.48%
Other Scholarships	12,877,911	12,767,145	13,510,757	15,303,231	16,362,209	18,740,011	45.52%
Inst. Employment	1,572,601	1,790,930	1,172,607	1,434,539	2,264,825	2,337,838	48.66%
Inst. Work Study	137,194	158,967	283,958	239,266	16,358	29,799	-78.28%
Private Loans	9,167,000	12,861,903	15,266,746	16,419,194	12,311,589	13,383,634	46.00%
<b>TOTAL OTHER AID</b>	<b>28,551,765</b>	<b>33,099,681</b>	<b>36,087,929</b>	<b>39,709,275</b>	<b>37,720,485</b>	<b>42,099,169</b>	<b>47.45%</b>
<b>TOTAL FINANCIAL AID</b>	<b>63,133,854</b>	<b>68,716,972</b>	<b>73,618,978</b>	<b>85,519,955</b>	<b>99,249,492</b>	<b>114,088,878</b>	<b>80.71%</b>
Unduplicated count of students receiving aid	5,287	5,552	5,843	6,437	7,086	7,723	46.08%

Note: VA Benefits are no longer counted towards students' financial aid beginning 2009-2010.

# FINANCIAL AID DISBURSEMENTS 2005-2006 TO 2010-2011





**BUILDINGS INVENTORY**  
**Fall 2011**

<b>Building Name</b>	<b>Gross Area Square Feet</b>	<b>Net E &amp; G Square Feet</b>	<b>Classrooms</b>		<b>Laboratories</b>		<b>Replacement Cost of Buildings*</b>
			<b>Number</b>	<b>Stations</b>	<b>Number</b>	<b>Stations</b>	
Arcadia Hall	11,881	7,789	---	---	---	---	\$1,772,617
Atheneum Hall	10,773	5,951	---	---	---	---	\$2,542,203
Baseball Facilities	9,547	7,463	---	---	---	---	\$885,797
Burroughs Chapin Marine and Wetland	74,090	62,843	---	---	1	25	\$7,726,379
Coastal Band Hall	6,488	4,881	---	---	---	---	\$688,310
Coastal Band Hall #2	1,440	1,250	---	---	---	---	\$55,565
Coastal Science Center	69,435	44,966	13	655	4	145	\$7,907,085
Custodial/ Facilities Supply	9,220	7,717	---	---	---	---	\$928,739
Hicks Dining Hall	14,020	0	---	---	---	---	\$3,667,212
Edwards College of Humanities	111,632	64,389	25	1,330	17	395	\$26,225,857
Evergreen Hall	2,118	1,790	---	---	---	---	\$267,397
Brooks Stadium	29,830	22,266	---	---	---	---	\$14,204,245
Foundation Center	30,255	10,292	---	---	---	---	\$3,871,900
Greenhouse	2,880	1,140	---	---	---	---	\$223,996
Greenhouse Office/Storage	281	151	---	---	---	---	\$220,000
Hampton Hall	7,931	5,833	---	---	---	---	\$1,502,572
Indigo House	2,828	2,086	---	---	---	---	\$308,209
Kearns Hall	31,283	19,144	9	371	1	25	\$6,769,619
Kimbel Library	46,674	23,057	---	---	---	---	\$10,758,776
Kingston Hall	12,213	5,043	---	---	---	---	\$1,559,272
Physical Plant Maintenance Shop	7,950	7,932	---	---	---	---	\$615,227
Eldred E. Prince Building	30,948	20,623	8	282	---	---	\$6,563,890
Elvington House (EHS Dept.)	4,038	2,000	---	---	---	---	\$288,318
Elvington House (Visiting Faculty)	1,320	1,200	---	---	---	---	\$129,051
Quail Creek Club House	7,843	5,012	---	---	---	---	\$850,763
Sands Hall	12,035	5,291	---	---	---	---	\$1,773,343
Smith Science Building	40,209	24,932	6	317	10	242	\$10,194,455
Singleton Administration Building	32,886	20,132	---	---	---	---	\$5,935,248
Lib Jackson Student Center	31,108	8,471	---	---	---	---	\$7,091,485
Student Health Center	7,888	4,616	---	---	---	---	\$1,228,700
Bill Baxley Hall	29,924	7,830	---	---	---	---	\$7,325,409
E. Craig Wall Sr. Building	100,907	52,994	20	1,168	6	231	\$23,718,909
Wheelwright Auditorium	31,899	14,247	---	---	---	---	\$12,022,017
Williams Brice PE Center	65,919	52,486	3	100	1	19	\$15,202,365
Winyah House	4,284	2,888	---	---	---	---	\$569,549
Atlantic Hall/Procurement Office	18,422	15,211	---	---	---	---	\$2,100,000
Human Resources Office	5,753	4,047	---	---	---	---	\$1,438,250
Media and Athletic Storage	2,576	2,128	---	---	---	---	\$243,561
Physical Plant Grounds Equipment	4,000	3,225	---	---	---	---	\$316,487
Physical Plant Tractor/Pesticide Storage	1,240	100	---	---	---	---	\$123,675
Chemical Storage Building	445	363	---	---	---	---	\$87,359
Athletics Grounds Maintenance Building	3,840	3,481	---	---	---	---	\$165,000
Softball Facilities	1,028	784	---	---	---	---	\$81,408
Nichols Tennis Facility	236	200	---	---	---	---	\$37,041
Laurel Hall	1,785	1,357	---	---	---	---	\$182,892
Adkins Field House	60,614	33,490	---	---	---	---	\$11,900,000
Intramural Grounds/Recreation Offices	5,935	2,950	---	---	---	---	\$275,000
<b>Subtotal</b>	<b>999,851</b>	<b>596,041</b>	<b>84</b>	<b>4,223</b>	<b>40</b>	<b>1,082</b>	<b>\$202,545,152</b>
Temporary Buildings	4,020	3,184	1	41	---	---	\$297,995
<b>Subtotal</b>	<b>1,003,871</b>	<b>599,225</b>	<b>85</b>	<b>4,264</b>	<b>40</b>	<b>1,082</b>	<b>\$202,843,147</b>
Higher Education Centers*	57,580	36,605	5	187	2	67	\$20,900,000
<b>Subtotal E &amp; G Space</b>	<b>1,061,451</b>	<b>635,830</b>	<b>90</b>	<b>4,451</b>	<b>42</b>	<b>1,149</b>	<b>\$223,743,147</b>
Residence Halls	281,760	0	---	---	---	---	\$42,285,549
<b>TOTAL</b>	<b>1,343,211</b>	<b>635,830</b>	<b>90</b>	<b>4,451</b>	<b>42</b>	<b>1,149</b>	<b>\$266,028,696</b>

Source: South Carolina Commission on Higher Education

\*Leased Property



Office of Institutional Research, Assessment and Analysis  
Coastal Carolina University  
P.O. Box 261954 • Conway, SC 29528-6054  
[www.coastal.edu](http://www.coastal.edu)