

Comparison of Peer, Aspirant and South Carolina Comprehensive Institutions Fall 2014 Report



Prepared by the Office of Institutional Research, Assessment and Analysis
October 2015

Coastal Carolina University

Current Peer Institutions

Florida Gulf Coast University

Morehead State University

Murray State University

Radford University

The University of Tennessee at Chattanooga

The University of Tennessee-Martin

The University of West Florida

Western Carolina University

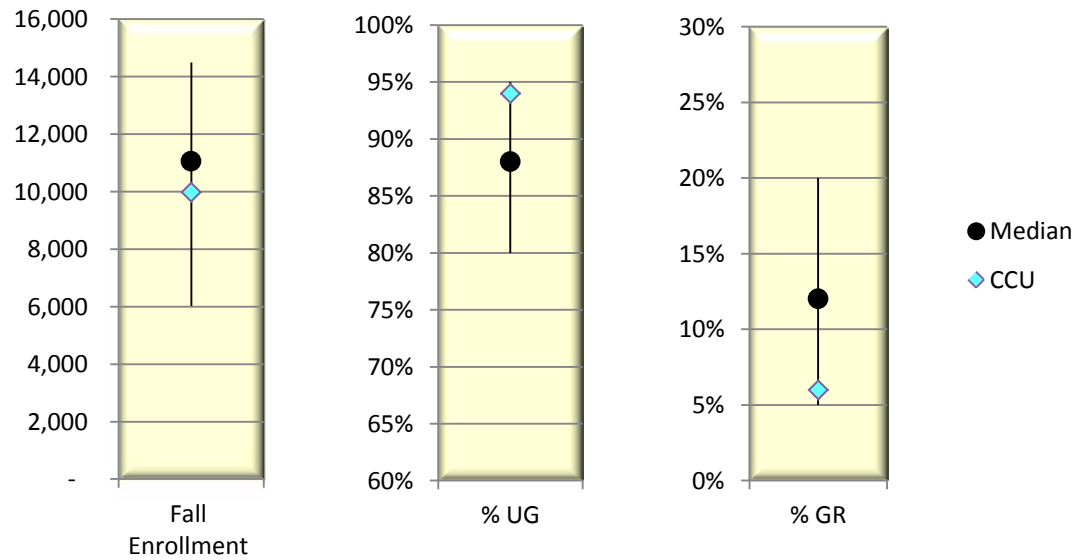
Winthrop University

**PEER INSTITUTIONS
FALL 2014**

ENROLLMENT

CCU's graduate student enrollment is 6% below the peer group median. CCU boasted the highest increase in total enrollment among the peers with a 5.25% increase followed next by FGCU at 2.59%.

2014-15 Common Data Set	Total Fall 2014 Enrollment	% Change from 2013	Level			
			Under-graduate	% Change from 2013	Grad/Prof.	% Change from 2013
Rank Among Aspirants	7th		2nd		9th	
Coastal Carolina University	9,976	↑ 5.25%	94%	↔ 0%	6%	↔ 0%
Florida Gulf Coast University	14,492	↑ 2.79%	92%	↔ 0%	8%	↔ 0%
Morehead State University	11,053	↑ -2.60%	90%	↑ 1%	10%	↓ -1%
Murray State University	11,207	↑ 2.41%	84%	↑ 1%	16%	↓ -1%
Radford University	9,798	↓ -1.30%	91%	↓ -1%	11%	↑ 1%
The University of Tennessee at Chattanooga	11,670	↓ -0.03%	88%	↔ 0%	12%	↔ 0%
The University of Tennessee at Martin	7,042	↓ -5.13%	95%	↔ 0%	5%	↔ 0%
The University of West Florida	12,602	↑ 0.11%	80%	↓ -1%	20%	↑ 1%
Western Carolina University	10,382	↑ 2.72%	85%	↑ 1%	15%	↓ -1%
Winthrop University	6,024	↓ -1.73%	82%	↔ 0%	18%	↔ 0%
Median of Peers	11,053	↓ -0.03%	88%	↔ 0%	12%	↔ 0%

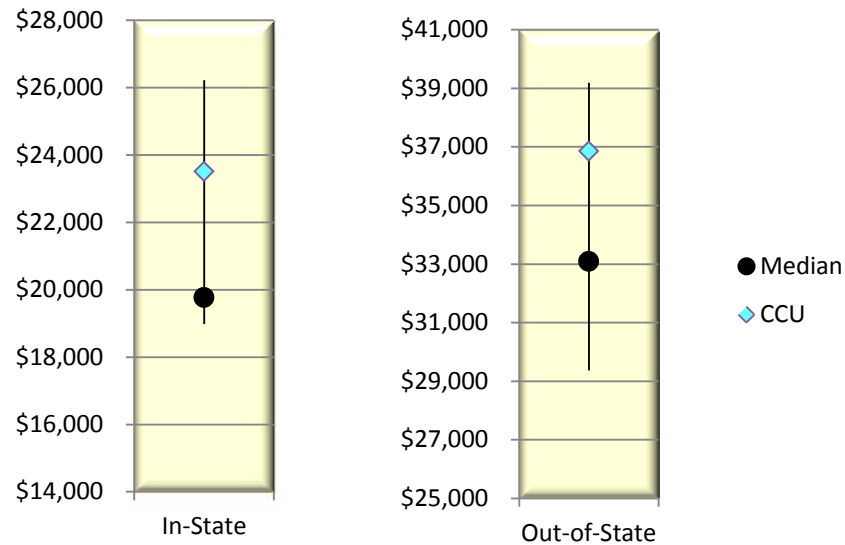


**PEER INSTITUTIONS
FALL 2014**

COST OF ATTENDANCE				
CCU ranks above the median for in-state and out-of-state cost of attendance for the peer institutions.				
Fall 2014-15 IPEDS Data	Total Cost of Attendance for Student Living on Campus			
	In-State*	% Change from 2013	Out-of-State**	% Change from 2013
Rank Among Peers	2nd		4th	
Coastal Carolina University	\$23,514	↑ 3.8%	\$36,854	↑ 4.8%
Florida Gulf Coast University	\$20,142	↑ 5.4%	\$39,186	↑ 2.0%
Morehead State University	\$19,525	↑ 3.6%	\$31,325	↑ 4.1%
Murray State University	\$19,414	↑ 1.3%	\$32,134	↑ 3.6%
Radford University	\$21,320	↑ 3.0%	\$34,006	↑ 3.5%
The University of Tennessee at Chattanooga	\$21,818	↑ 6.3%	\$37,936	↑ 6.2%
The University of Tennessee-Martin	\$19,144	↑ 3.4%	\$33,088	↑ 1.5%
The University of West Florida	\$19,772	↑ 0.2%	\$32,653	↑ 0.1%
Western Carolina University	\$18,977	↑ 2.0%	\$29,370	↑ 4.2%
Winthrop University	\$26,222	↑ 3.0%	\$39,148	↑ 3.0%
Median of Peers	\$19,772	↑ 2.4%	\$33,088	↑ 3.2%

*Includes in-state tuition and fees, books and supplies, on campus room and board, and other on campus expenses.

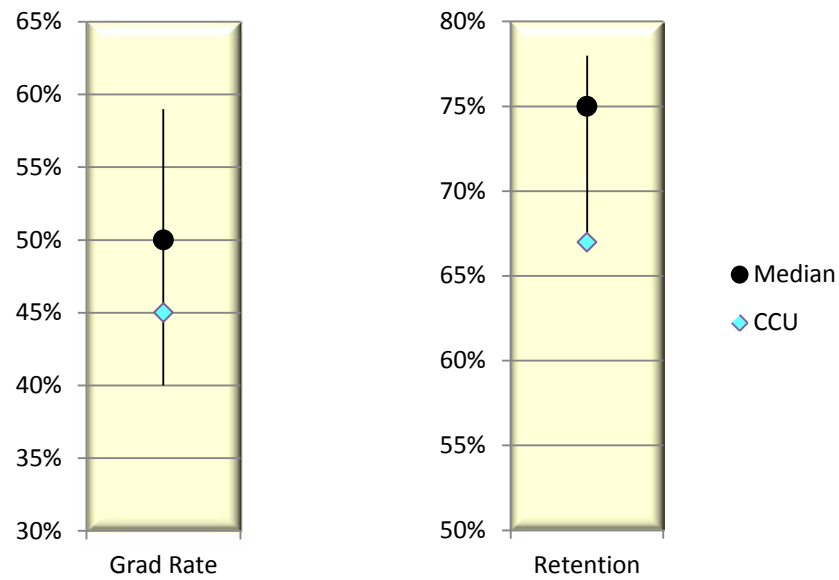
**Includes out-of-state tuition and fees, books and supplies, on campus room and board, and other on campus expenses.



**PEER INSTITUTIONS
FALL 2014**

GRADUATION AND RETENTION				
CCU ranks below the median in graduation rate and last in retention rate among peers.				
2014-15 Common Data Set	6-Year Graduation Rate	% Change from 2013	First-year Full-time Retention	% Change from 2013
Rank Among Peers	8th		9th	
Coastal Carolina University	45%	↓ -1%	67%	↑ 4%
Florida Gulf Coast University	49%	↑ 5%	78%	↑ 2%
Morehead State University	45%	↑ 0%	69%	↑ 1%
Murray State University	52%	↓ -2%	72%	↔ 0%
Radford University	59%	↔ 0%	75%	↓ -3%
The University of Tennessee at Chattanooga	40%	↑ 2%	70%	↑ 1%
The University of Tennessee at Martin	47%	↑ 1%	71%	↓ -8%
The University of West Florida	51%	↑ 9%	NR	--
Western Carolina University	58%	↑ 7%	78%	↑ 8%
Winthrop University	52%	↔ 0%	77%	↑ 2%
Median of Peers	50%	↑ 3%	75%	↑ 4%

NR: Not reported in the institutions' 2014-15 Common Data Set



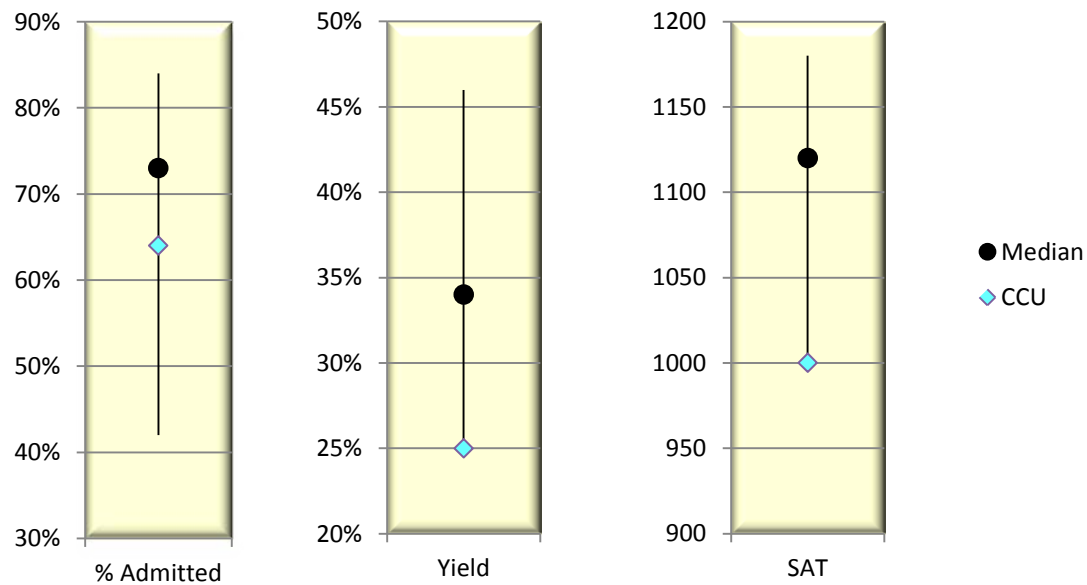
**PEER INSTITUTIONS
FALL 2014**

ADMISSIONS						
CCU is 9% below the peer median for the percent of applicants admitted and admission yield. The SAT 75th percentile composite is 120 points below the median.						
2014-15 IPEDS Data	Percent Admitted*	% Change from 2013	Admission Yield**	% Change from 2013	Top Quartile SAT Comp.***	Change from 2013
Rank Among Peers	3rd		10th		9th	
Coastal Carolina University	64%	↓ -10%	25%	↓ -2%	1000	↓ -80
Florida Gulf Coast University	72%	↓ 6%	34%	↓ -5%	1130	↑ 30
Morehead State University	84%	↑ 0%	34%	↑ -3%	1095	↓ -20
Murray State University	80%	↑ -2%	40%	↔ -3%	1110	↑ 50
Radford University	79%	↑ 1%	33%	↓ 0%	1060	↓ -20
The University of Tennessee at Chattanooga	77%	↓ -1%	38%	↑ -2%	1180	↔ 0
The University of Tennessee-Martin	73%	↑ -4%	46%	↑ -1%	NR	--
The University of West Florida	42%	↓ -6%	33%	↓ 11%	1120	↓ -10
Western Carolina University	43%	↓ 5%	26%	↔ -1%	1120	↓ -10
Winthrop University	71%	↓ -1%	32%	↑ -3%	1170	↑ 30
Median of Peers	73%	↓ -4%	34%	↓ -3%	1120	↑ 5

*Number of admissions-total divided by the total applicants - ranked lowest to highest

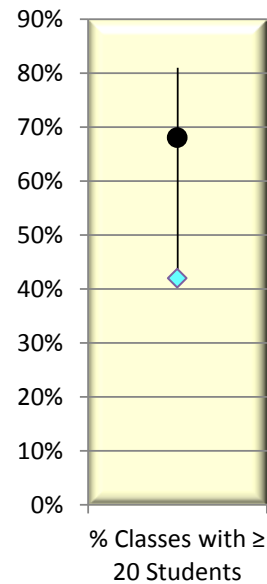
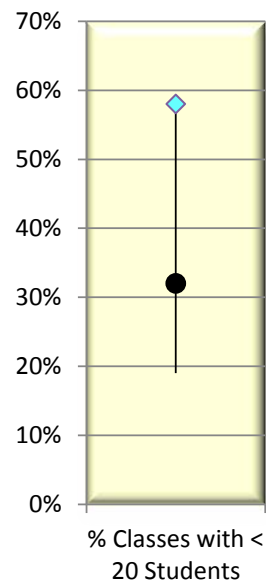
**Number enrolled divided by the number admitted

***75th Percentile Verbal and Math combined



**PEER INSTITUTIONS
FALL 2014**

CLASS SIZE				
CCU's class size equals the peer median.				
Fall 2014-15 Common Data Set	Undergraduate Class Size			
	% Classes with < 20 Students	% Change from 2013	% Classes with ≥ 20 Students	% Change from 2013
Rank Among Peers	7th		4th	
Coastal Carolina University	32%	↓ -4%	68%	↑ 4%
Florida Gulf Coast University	19%	↓ -1%	81%	↑ 1%
Morehead State University	53%	↓ -2%	47%	↑ 2%
Murray State University	56%	↑ 1%	44%	↓ -1%
Radford University	31%	↓ -3%	69%	↑ 3%
The University of Tennessee at Chattanooga	37%	↓ -2%	63%	↑ 2%
The University of Tennessee-Martin	58%	↑ 4%	42%	↓ -4%
The University of West Florida	32%	↔ 0%	68%	↔ 0%
Western Carolina University	28%	↑ 2%	72%	↓ -2%
Winthrop University	45%	↔ -4%	55%	↑ 4%
Median of Peers	32%	↓ -7%	68%	↑ 7%

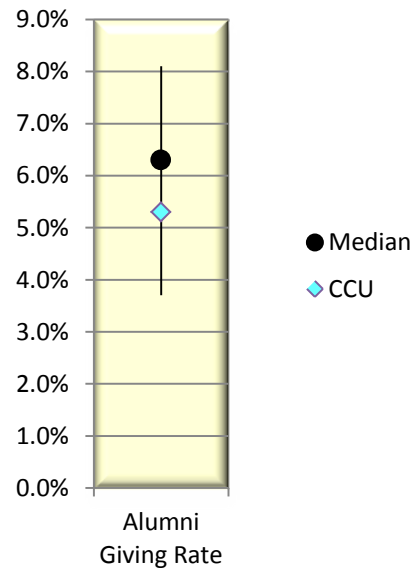


**PEER INSTITUTIONS
FALL 2014**

ALUMNI GIVING		
CCU ranks 6th among its peers and is 1.0% below the median in alumni giving.		
2015 U.S. News and World Report-Education Rankings	Alumni Giving Rate	% Change from 2013
Rank Among Peers	6th	
Coastal Carolina University	5.3%	↑ 0.5%
Florida Gulf Coast University	6.8%	--
Morehead State University	8.1%	↑ 0.5%
Murray State University	13.8%	--
Radford University	4.7%	↑ 0.2%
The University of Tennessee at Chattanooga	5.0%	↔ 0.0%
The University of Tennessee-Martin	6.3%	↑ 0.4%
The University of West Florida	3.7%	↓ -11.7%
Western Carolina University	5.3%	↔ 0.0%
Winthrop University	6.9%	↑ 0.6%
Median of Peers	6.3%	↑ 0.4%

Methodology: Number of undergraduate alumni donors in 2013-14 divided by the number of undergraduate alumni of record in 2013-14

Florida Gulf Coast and Murray State did not disclose a rate in 2013



Coastal Carolina University

Current Aspirant Institutions

Appalachian State University

College of Charleston

James Madison University

University of North Carolina at Wilmington

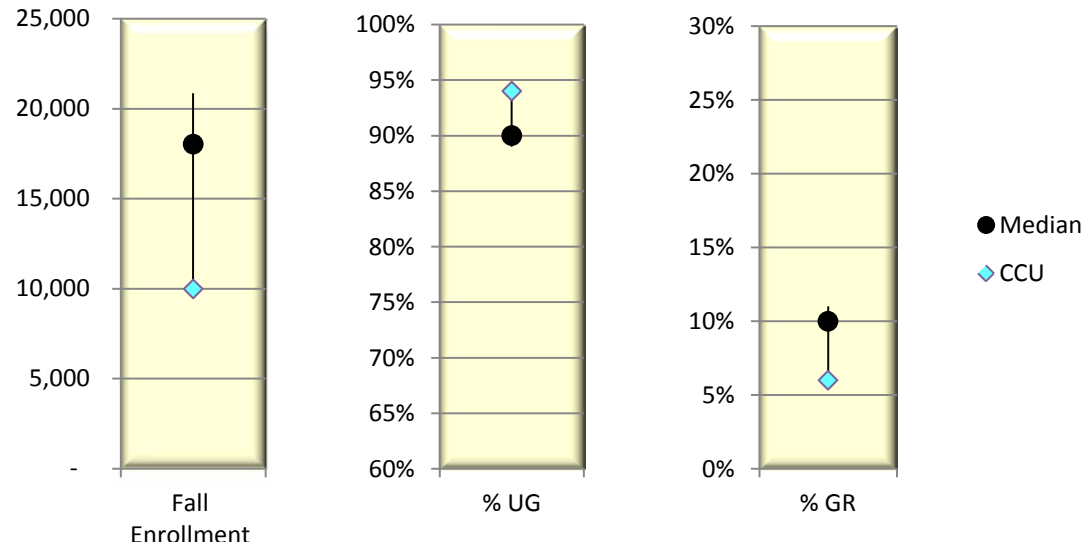
University of Texas at Dallas

**ASPIRANT INSTITUTIONS
FALL 2014**

ENROLLMENT

CCU's graduate student enrollment is 4% below the median of the aspirant group. Total enrollment for the University is far below the median of the aspirants.

2014-15 Common Data Set	Total Fall 2014 Enrollment	% Change from 2013	Level			
			Under-graduate	% Change from 2013	Grad/Prof.	% Change from 2013
Rank Among Aspirants	6th		1st		6th	
Coastal Carolina University	9,976	↑ 5.25%	94%	↔ 0%	6%	↔ 0%
Appalachian State University	18,026	↑ 1.05%	90%	↑ 1%	10%	↓ -1%
College of Charleston	11,456	↓ -1.40%	91%	↑ 2%	9%	↓ -2%
James Madison University	20,855	↑ 1.26%	92%	↑ 1%	8%	↓ -1%
University of North Carolina-Wilmington	14,570	↑ 4.54%	89%	↓ -1%	11%	↑ 1%
University of Texas at Dallas	23,095	↑ 8.97%	62%	↑ 1%	38%	↓ -1%
Median of Aspirants	18,026	↑ 1.4%	90%	↔ 0%	10%	↔ 0%



**ASPIRANT INSTITUTIONS
FALL 2014**

COST OF ATTENDANCE				
CCU ranks fourth among aspirants for in-state and out-of-state cost of attendance. Out-of-state cost of attendance is below the median.				
Fall 2014 IPEDS Data	Total Cost of Attendance for Student Living on Campus			
	In-State*	% Change from 2013	Out-of-State**	% Change from 2013
Rank Among Aspirants	4th		4th	
Coastal Carolina University	\$23,514	↑ 3.8%	\$36,854	↑ 3.3%
Appalachian State University	\$19,387	↑ 1.7%	\$32,554	↑ 4.1%
College of Charleston	\$27,342	↑ 2.6%	\$44,332	↑ 2.8%
James Madison University	\$24,012	↑ 5.6%	\$38,872	↑ 4.4%
University of North Carolina at Wilmington	\$21,391	↑ 3.8%	\$35,419	↑ 8.6%
University of Texas at Dallas	\$25,126	↑ 1.4%	\$41,156	↑ 3.0%
Median of Aspirants	\$24,012	↑ 5.6%	\$38,872	↑ 4.4%

*Includes in-state tuition and fees, books and supplies, on campus room and board, and other on campus expenses.

**Includes out-of-state tuition and fees, books and supplies, on campus room and board, and other on campus expenses.

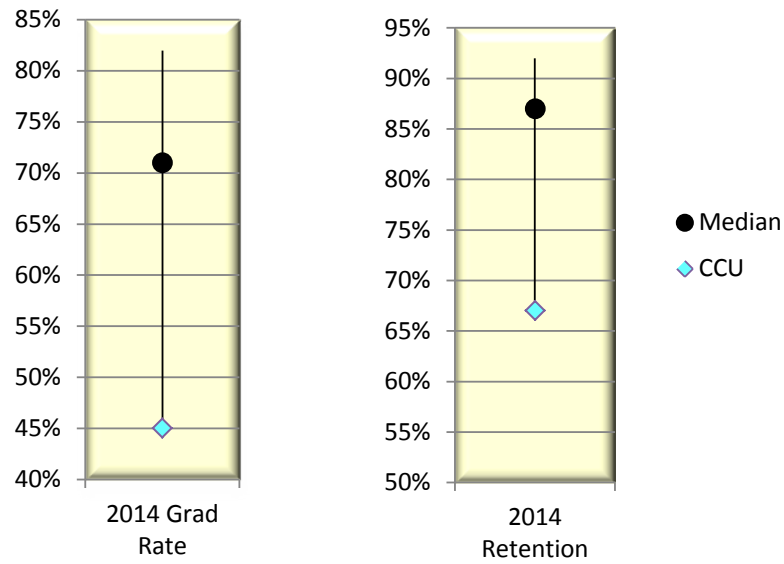


**ASPIRANT INSTITUTIONS
FALL 2014**

GRADUATION AND RETENTION

CCU ranks last in graduation and retention rates compared to aspirants and is below the median in both categories.

2014-15 Common Data Set	6-Year Graduation Rate	% Change from 2013	First-year Full-time Retention	% Change from 2013
Rank Among Aspirants	6th		6th	
Coastal Carolina University	45%	↓ -1%	67%	↑ 4%
Appalachian State University	70%	↑ 2%	88%	↑ 1%
College of Charleston	66%	↑ 1%	79%	↓ -4%
James Madison University	82%	↑ 1%	92%	↔ 0%
University of North Carolina-Wilmington	71%	↔ 0%	84%	↓ -2%
University of Texas at Dallas	71%	↑ 8%	87%	↓ -2%
Median of Aspirants	71%	↑ 3%	87%	↔ 0%



**ASPIRANT INSTITUTIONS
FALL 2014**

ADMISSIONS

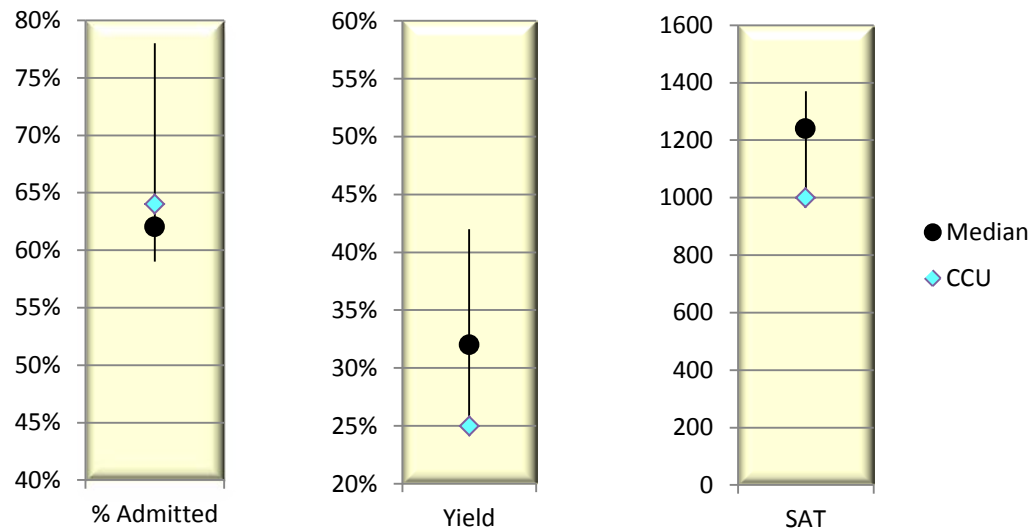
CCU is 2% above the median admission rate of the aspirants and is 7% below the median of aspirants in admissions yield. CCU is 240 points below the aspirant median in top quartile SAT scores.

Fall 2014 IPEDS Data	Percent Admitted*	% Change from 2013	Admission Yield**	% Change from 2013	Top Quartile SAT Comp.***	Change from 2013
Rank Among Aspirants	4th		5th		6th	
Coastal Carolina University	64%	↓ -10%	25%	↓ -2%	1000	↓ -80
Appalachian State University	62%	↓ -1%	36%	↑ 10%	1240	↔ 0
College of Charleston	78%	↑ 8%	25%	↓ -14%	1230	↓ -30
James Madison University	66%	↑ 2%	29%	↓ -1%	1230	↓ -20
University of North Carolina at Wilmington	59%	↑ 5%	32%	↓ -2%	1270	↑ 20
University of Texas-Dallas	62%	↑ 3%	42%	↓ -2%	1370	↔ 0
Median of Aspirants	62%	↓ -2%	32%	↓ -2%	1240	↓ -10

*Number of admissions-total divided by the total applicants - ranked lowest to highest

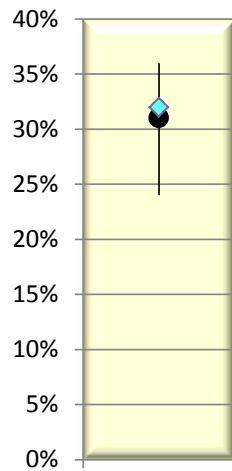
**Number enrolled divided by the number admitted

***75th Percentile Verbal and Math combined

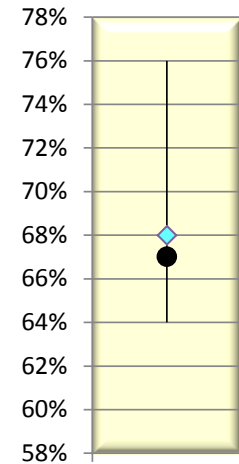


**ASPIRANT INSTITUTIONS
FALL 2014**

CLASS SIZE				
CCU's ranking is comparable to the median class size of aspirants.				
Fall 2014-15 Common Data Set	Undergraduate Class Size			
	% Classes with < 20 Students	% Change from 2013	% Classes with ≥ 20 Students	% Change from 2013
Rank Among Aspirants	3rd		4th	
Coastal Carolina University	32%	↓ -4%	68%	↑ 4%
Appalachian State University	36%	↓ -2%	64%	↑ 2%
College of Charleston	36%	↓ -1%	64%	↑ 1%
James Madison University	31%	↓ -2%	69%	↑ 2%
University of North Carolina at Wilmington	30%	↓ -4%	70%	↑ 4%
University of Texas at Dallas	24%	↓ -1%	76%	↑ 1%
Median of Aspirants	31%	↓ -3%	67%	↔ 0%



% Classes with < 20 Students



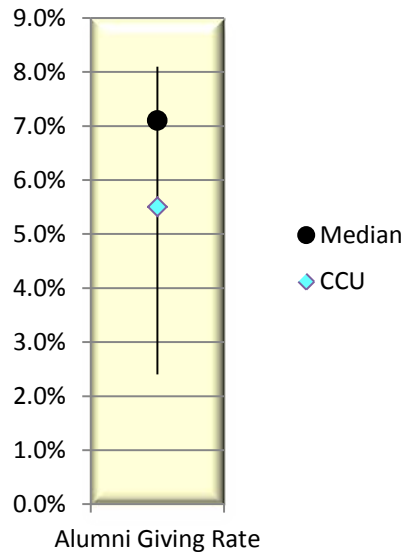
% Classes with ≥ 20 Students

● Median
◆ CCU

**ASPIRANT INSTITUTIONS
FALL 2014**

ALUMNI GIVING		
CCU is below the aspirant median for alumni giving by 1.8%.		
2015 U.S. News and World Report-Education Rankings	Alumni Giving Rate	% Change from 2013
Rank Among Aspirants	5th	
Coastal Carolina University	5.3%	↑ 0.5%
Appalachian State University	8.1%	↓ -0.5%
College of Charleston	7.8%	↑ 0.7%
James Madison University	7.1%	↓ -0.1%
The University of North Carolina at Wilmington	5.5%	↓ -0.4%
The University of Texas-Dallas	2.4%	↓ -0.2%
Median of Aspirants	7.1%	↑ 0.6%

Methodology: Number of undergraduate alumni donors in 2012-13 divided by the number of undergraduate alumni of record in 2014-15



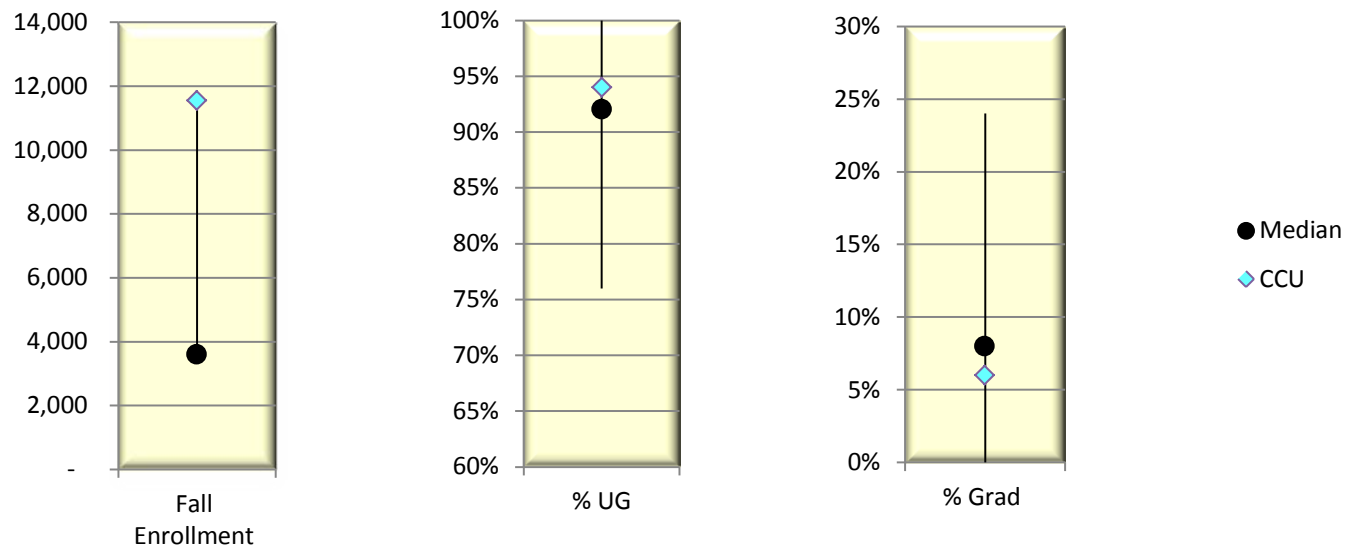
Coastal Carolina University

Current SC Comprehensive Institutions

The Citadel
College of Charleston
Francis Marion University
Lander University
South Carolina State
USC-Aiken
USC-Beaufort
USC-Upstate
Winthrop University

**SC COMPREHENSIVE INSTITUTIONS
FALL 2014**

ENROLLMENT						
CCU ranks second in total enrollment among the SC Comprehensive Institutions and sixth in graduate students as a percent of total enrollment.						
2014-15 Common Data Set	Total Fall 2014 Enrollment	% Change from 2013	Level			
			Under-graduate	% Change from 2013	Grad/Prof.	% Change from 2013
Rank Among SC Comprehensive Institutions	2nd		5th		6th	
Coastal Carolina University	9,976	↑ 5.25%	94%	↔ 0%	6%	↔ 0%
College of Charleston	11,546	↓ -0.63%	90%	↑ 1%	10%	↓ -1%
Francis Marion University	3,944	↓ -2.81%	92%	↓ -1%	8%	↑ 1%
Lander University	2,787	↓ -3.13%	97%	↔ 0%	3%	↔ 0%
SC State University	3,331	↓ -3.81%	85%	↓ -2%	15%	↑ 2%
The Citadel	3,592	↓ -0.17%	76%	↑ 1%	24%	↓ -1%
USC-Aiken	3,444	↑ 4.40%	96%	↓ -2%	4%	↑ 2%
USC-Beaufort	1,794	↑ 4.06%	100%	↔ 0%	0%	↔ 0%
USC-Upstate	5,585	↑ 2.57%	98%	↓ -1%	2%	↑ 1%
Winthrop University	6,024	↓ -1.73%	82%	↑ 1%	18%	↓ -1%
Median of SC Comprehensive Institutions	3,592	↓ -0.17%	92%	↓ -1%	8%	↑ 1%

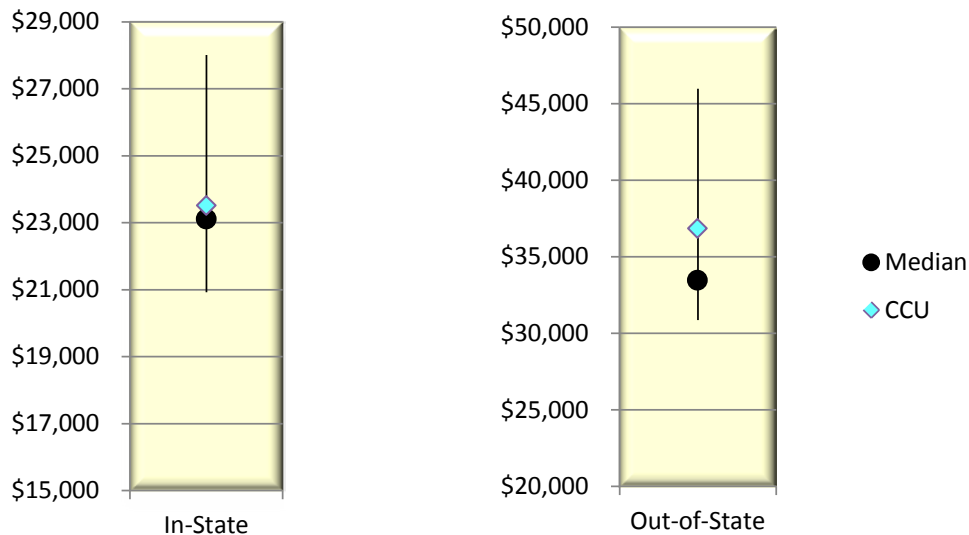


**SC COMPREHENSIVE INSTITUTIONS
FALL 2014**

COST OF ATTENDANCE				
CCU ranks fifth for in-state cost of attendance and near the median among SC Comprehensive Institutions.				
Fall 2014 IPEDS Data	Total Cost of Attendance for Student Living on Campus			
	In-State*	% Change from 2013	Out-of-State**	% Change from 2013
Rank Among SC Comprehensive Institutions	5th		5th	
Coastal Carolina University	\$23,514	↑ 3.8%	\$36,854	↑ 3.3%
College of Charleston	\$27,342	↑ 2.6%	\$44,332	↑ 2.8%
Francis Marion University	\$21,605	↑ 3.3%	\$30,871	↑ 3.2%
Lander University	\$22,118	↑ -0.8%	\$31,438	↑ 0.3%
SC State University	\$28,007	↑ 6.7%	\$37,856	↑ 7.0%
The Citadel	\$26,374	↑ 3.7%	\$45,982	↑ 3.9%
USC-Aiken	\$20,923	↓ -4.9%	\$31,319	↑ 1.9%
USC-Beaufort	\$21,396	↓ -1.2%	\$31,685	↑ 1.4%
USC-Upstate	\$23,104	↑ 1.3%	\$33,454	↑ 1.9%
Winthrop University	\$26,222	↑ 3.0%	\$39,148	↑ 3.0%
Median of SC Comprehensive Institutions	\$23,104	↑ 2.6%	\$33,454	↑ 2.8%

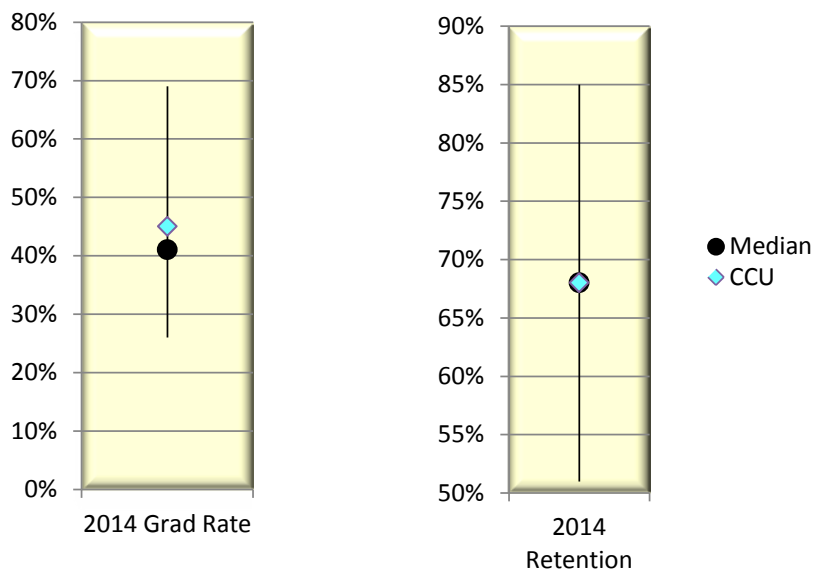
*Includes in-state tuition and fees, books and supplies, on campus room and board, and other on campus expenses.

**Includes out-of-state tuition and fees, books and supplies, on campus room and board, and other on campus expenses.



**SC COMPREHENSIVE INSTITUTIONS
FALL 2014**

GRADUATION AND RETENTION					
CCU ranks fourth for graduation rate and is one percentage point below the retention median among SC Comprehensive Institutions.					
2014-15 CHEMIS	6-Year Graduation Rate	% Change from 2013	First-year Full-time Retention	% Change from 2013	
Rank Among SC Comprehensive Institutions	4th		7th		
Coastal Carolina University	45%	↓ -1%	67%	↑ 4%	
College of Charleston	66%	↑ 1%	79%	↓ -4%	
Francis Marion University	41%	↔ 0%	68%	↑ 1%	
Lander University	45%	↑ 3%	68%	↑ 7%	
SC State University	38%	↑ 2%	63%	↑ 3%	
The Citadel	69%	↔ 0%	85%	↔ 0%	
USC-Aiken	39%	↓ -3%	66%	↔ 0%	
USC-Beaufort	26%	↓ -1%	51%	↓ -5%	
USC-Upstate	38%	↓ -3%	73%	↑ 7%	
Winthrop University	51%	↓ -5%	77%	↑ 5%	
Median of SC Comprehensive Institutions	41%	↓ -1%	68%	↑ 2%	



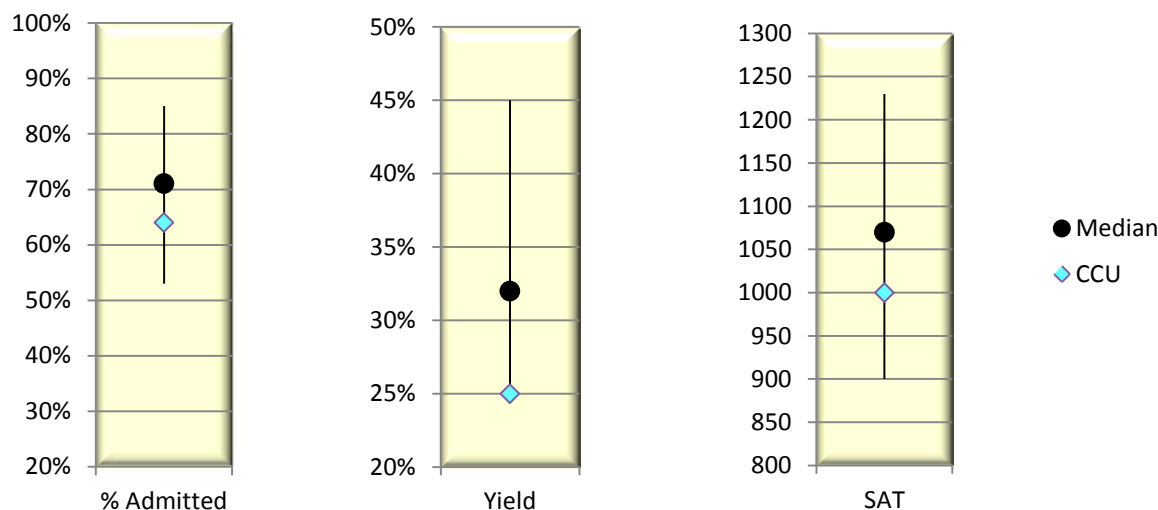
**SC COMPREHENSIVE INSTITUTIONS
FALL 2014**

ADMISSIONS						
CCU is ranked above the median of SC Comprehensive Institutions in percent admitted and below the median in yield percentage. CCU ranks fourth in top quartile SAT scores and is 10 points above the group median.						
Fall 2014 IPEDS Data	Percent Admitted*	% Change from 2013	Admission Yield**	% Change from 2013	Top Quartile SAT Comp. ***	% Change from 2013
Rank Among SC Comprehensive Institutions	4th		8th		8th	
Coastal Carolina University	64%	↓ -10%	25%	↓ -2%	1000	↓ -20
College of Charleston	78%	↑ 8%	25%	↓ -1%	1230	↓ -20
Francis Marion University	59%	↑ 2%	31%	↓ -2%	1070	↔ 0
Lander University	58%	↑ 16%	32%	↓ -8%	980	↓ -10
SC State	85%	↑ 34%	26%	↑ 1%	900	↓ -38
The Citadel	76%	↓ -4%	31%	↓ -2%	1190	↑ 20
USC-Aiken	66%	↑ 15%	45%	↑ 6%	1080	↓ -10
USC-Beaufort	73%	↔ 0%	40%	↔ 0%	1010	↔ 0
USC-Upstate	53%	↓ -11%	38%	↓ -3%	1040	↑ 10
Winthrop University	71%	↓ -1%	32%	↓ -3%	1170	↓ -10
Median of SC Comprehensive Institutions	71%	↑ 7%	32%	↓ -3%	1070	↔ 0

*Number of admissions-total divided by the total applicants - ranked lowest to highest

**Number enrolled divided by the number admitted

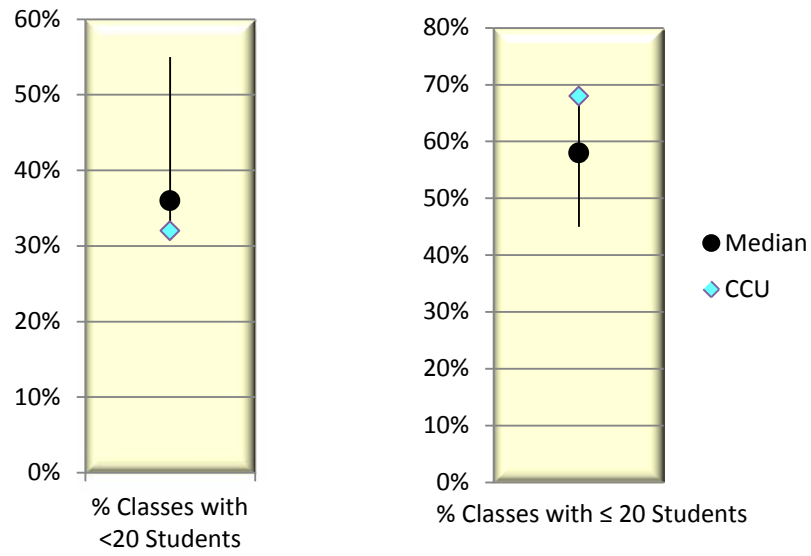
***75th Percentile Verbal and Math combined



**SC COMPREHENSIVE INSTITUTIONS
FALL 2014**

CLASS SIZE				
CCU's ranking is comparable to the median class size for SC Comprehensive Institutions.				
	Undergraduate Class Size			
	% Classes with <20 Students	% Change from 2013	% Classes with ≥20 Students	% Change from 2013
Fall 2014-15 Common Data Set				
Rank Among SC Comprehensive Institutions	5th		1st	
Coastal Carolina University	32%	↓ -4%	68%	↑ 4%
College of Charleston	36%	↓ -1%	64%	↑ 1%
The Citadel	39%	↑ 2%	61%	↓ -2%
USC-Aiken	55%	↑ 8%	45%	↓ -8%
Winthrop University	45%	↓ -4%	55%	↑ 4%
Median of SC Comprehensive Institutions	36%	↓ -1%	58%	↓ -5%

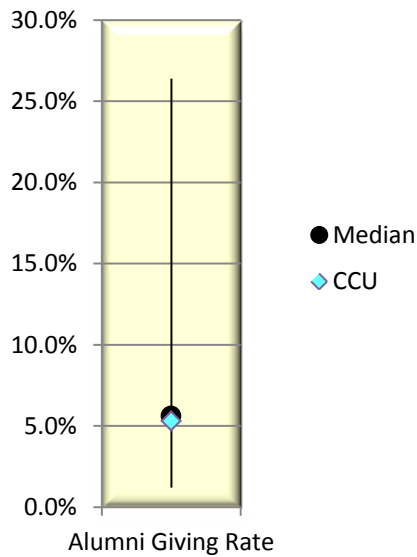
Institutions not listed did not complete the Common Data Set.



**SC COMPREHENSIVE INSTITUTIONS
FALL 2014**

ALUMNI GIVING		
CCU exceeds the SC Comprehensive median.		
2015 U.S. News and World Report-Education Rankings	Alumni Giving Rate	% Change from 2013
Rank Among SC Comprehensive Institutions	5th	
Coastal Carolina University	5.3%	↑ 0.5%
College of Charleston	7.8%	↑ 0.7%
Francis Marion University	4.0%	↑ 1.1%
The Citadel	26.4%	↓ -1.0%
USC-Aiken	5.6%	↓ -1.1%
USC-Beaufort	2.5%	↓ -1.0%
USC-Upstate	1.2%	↓ -1.0%
Winthrop University	6.9%	↑ 0.6%
Median of SC Comprehensive Institutions	5.6%	↑ 1.5%

Methodology: Number of undergraduate alumni donors in 2013-14 divided by the number of undergraduate alumni of record in 2013-14
Lander and South Carolina State did not disclose a rate



CCU Status for Fall 2014 in Relation to Peer, Aspirant and SC Comprehensive Institution Medians

Variable	CCU	Peer Median	CCU to Peer Median Variance	Aspirant Median	CCU to Aspirant Median Variance	SC Comprehensive Median	CCU to SC Comprehensive Median Variance
Enrollment							
Total Enrollment	9,976	11,053	(1,077)	18,026	(8,050)	3,592	6,384
Percent Undergrad	94%	88%	6%	90%	4%	94%	0%
Percent Grad	6%	12%	-6%	10%	-4%	6%	0%
Cost of Attendance							
In-State	\$23,514	\$19,722	\$3,792	\$24,012	(\$498)	\$23,104	\$410
Out-of-State	\$36,854	\$33,088	\$3,766	\$38,872	(\$2,018)	\$33,454	\$3,400
Key Performance Indicators							
6-Year Graduation	45%	50%	-5%	71%	-26%	41%	4%
First-Year Full Time Retention	67%	75%	-8%	87%	-20%	68%	-1%
Undergraduate Admissions							
Percent Admitted	64%	73%	-9%	71%	-7%	64%	0%
Admission Yield	25%	37%	-12%	32%	-7%	35%	-10%
Top Quartile SAT Comp.	1000	1130	-130	1020	-20	1070	-70
Undergraduate Class Size							
< 20 Students	32%	32%	0%	31%	1%	36%	-4%
> 20 Students	68%	68%	0%	67%	1%	63%	5%
Alumni Giving							
Alumni Giving Rate	5.3%	6.3%	-1.0%	7.1%	-1.8%	4.7%	0.6%

Note: The common data set was not available for the following institutions: Francis Marion University, Lander University, South Carolina State, USC Beaufort