

# Comparison of Peer, Aspirant and South Carolina Comprehensive Institutions Fall 2013 Report



Prepared by the Office of Institutional Research, Assessment and Analysis  
September 2014

# Coastal Carolina University

## **Current Peer Institutions**

Florida Gulf Coast University

Morehead State University

Murray State University

Radford University

The University of Tennessee at Chattanooga

The University of Tennessee-Martin

The University of West Florida

Western Carolina University

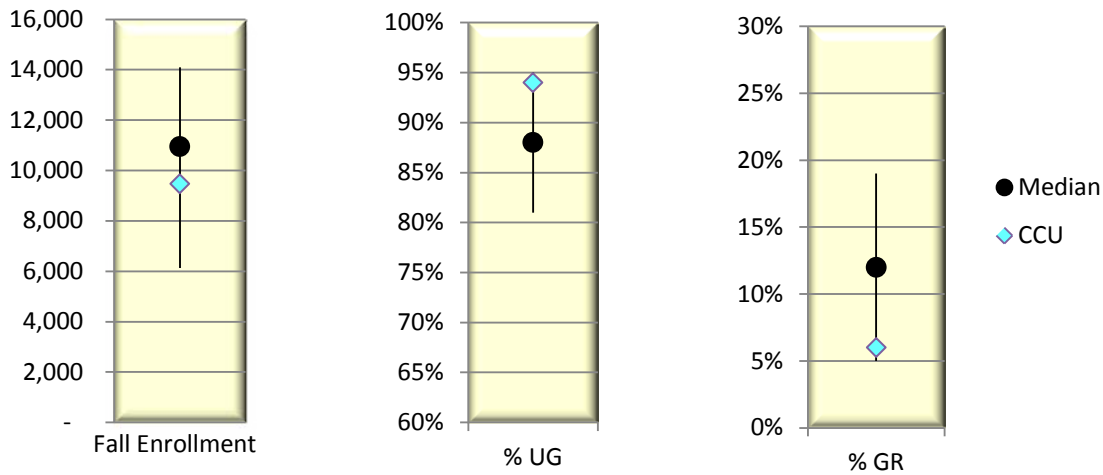
Winthrop University

**PEER INSTITUTIONS**  
Fall 2013

<b>ENROLLMENT</b>						
CCU's total enrollment ranks eighth among peer institutions, and the University's graduate population is 6% below the peer median.						
2013-14 Common Data Set	Total Fall 2013 Enrollment	% Change from 2012	Level			
			Under-graduate	% Change from 2012	Grad/Prof.	% Change from 2012
<b>Rank Among Peers</b>	<b>8th</b>		<b>2nd</b>		<b>9th</b>	
Florida Gulf Coast University*	14,099	↑ 4.5%	93%	↑ 1%	7%	↓ -1%
The University of West Florida	12,588	↓ -0.5%	81%	↓ -1%	19%	↑ 1%
The University of Tennessee at Chattanooga	11,674	↑ 0.1%	88%	↑ 1%	12%	↓ -1%
Morehead State University	11,348	↑ 1.6%	89%	↑ 2%	11%	↓ -2%
Murray State University**	10,943	↑ 1.0%	84%	↑ 2%	16%	↓ -2%
Western Carolina University	10,107	↑ 4.9%	84%	↑ 1%	16%	↓ -1%
Radford University	9,928	↑ 3.6%	90%	↔ 0%	10%	↔ 0%
<b>Coastal Carolina University</b>	<b>9,478</b>	<b>↑ 1.5%</b>	<b>94%</b>	<b>↔ 0%</b>	<b>6%</b>	<b>↔ 0%</b>
The University of Tennessee-Martin	7,423	↓ -4.4%	95%	↔ 0%	5%	↔ 0%
Winthrop University	6,130	↓ -0.7%	82%	↔ 0%	18%	↔ 0%
<b>Median of Peers</b>	<b>10,943</b>	<b>↑ 1.0%</b>	<b>88%</b>	<b>↑ 1%</b>	<b>12%</b>	<b>↓ -1%</b>

\*FGCU Fast Facts

\*\*Provided through Enrollment Services

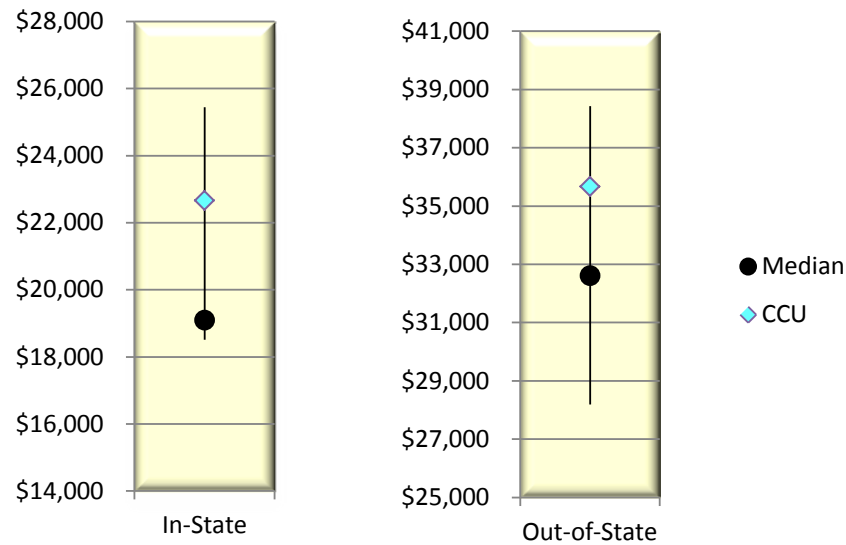


**PEER INSTITUTIONS**  
Fall 2013

<b>COST OF ATTENDANCE</b>				
CCU ranks above the median in-state and out-of-state cost of attendance for the peer institutions.				
Fall 2013-14 IPEDS Data	Total Cost of Attendance for Student Living on Campus			
	In-State*	% Change from 2012	Out-of-State**	% Change from 2012
<b>Rank Among Peers</b>	<b>2nd</b>		<b>4th</b>	
Winthrop University	\$25,450	↑ 2.4%	\$38,020	↑ 4.6%
<b>Coastal Carolina University</b>	<b>\$22,656</b>	↑ 1.0%	<b>\$35,666</b>	↑ 2.6%
Radford University	\$20,700	↑ 3.2%	\$35,736	↑ 3.7%
The University of Tennessee at Chattanooga	\$20,530	↑ 2.2%	\$32,865	↑ 3.8%
The University of West Florida	\$19,737	↑ 1.4%	\$32,618	↑ 0.9%
Florida Gulf Coast University	\$19,102	↑ 0.5%	\$38,424	↑ 1.0%
Murray State University	\$18,898	↑ 3.3%	\$30,099	↑ 2.9%
Morehead State University	\$18,851	↑ 2.9%	\$31,018	↑ 3.1%
Western Carolina University	\$18,599	↑ 4.1%	\$32,543	↑ 4.6%
The University of Tennessee-Martin	\$18,509	↑ 3.3%	\$28,196	↑ 2.7%
<b>Median of Peers</b>	<b>\$19,102</b>	↑ 2.3%	<b>\$32,618</b>	↑ 3.1%

\*Includes in-state tuition and fees, books and supplies, on campus room and board, and other on campus expenses.

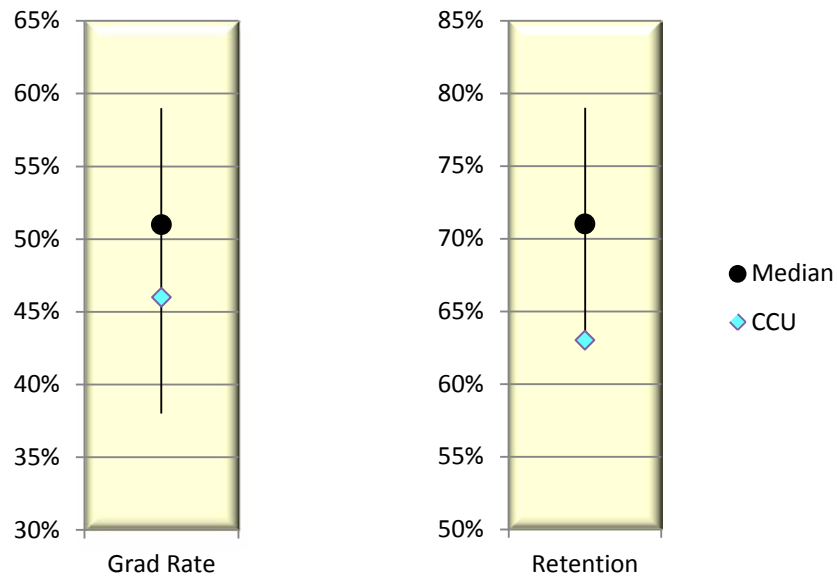
\*\*Includes out-of-state tuition and fees, books and supplies, on campus room and board, and other on campus expenses.



**PEER INSTITUTIONS**  
Fall 2013

<b>GRADUATION AND RETENTION</b>				
CCU ranks below the median in graduation rate and last in retention rate among peers.				
2013-14 Common Data Set	6-Year Graduation Rate	% Change from 2012	First-year Full-time Retention	% Change from 2012
<b>Rank Among Peers</b>	<b>5th</b>		<b>10th</b>	
Morehead State University	NR	■ -	68%	↑ 2%
Radford University	59%	↓ -1%	78%	↑ 4%
Murray State University*	54%	↑ 2%	72%	↓ -1%
Winthrop University	53%	↔ 0%	73%	↑ 3%
Western Carolina University	51%	↑ 3%	70%	↓ -6%
The University of Tennessee-Martin	46%	↓ -3%	79%	↑ 5%
<b>Coastal Carolina University</b>	<b>46%</b>	<b>↓ -1%</b>	<b>63%</b>	<b>↑ 3%</b>
The University of West Florida	42%	↓ -4%	70%	↓ -1%
The University of Tennessee at Chattanooga	38%	↔ 0%	69%	↑ 2%
<b>Median of Peers</b>	<b>51%</b>	<b>↑ 3%</b>	<b>71%</b>	<b>↓ -2%</b>

\*Provided through Enrollment Services  
NR: Not reported in the institutions' 2013-14 Common Data Set  
Institutions not listed did not complete the Common Data Set.



**PEER INSTITUTIONS**  
Fall 2013

**ADMISSIONS**

CCU ranks 3% below the peer median for the percent of applicants admitted. With a 27% admission yield, the University ranks next to lowest among its peers and is 10% below the median. The SAT 75th percentile composite is 50 points below the median.

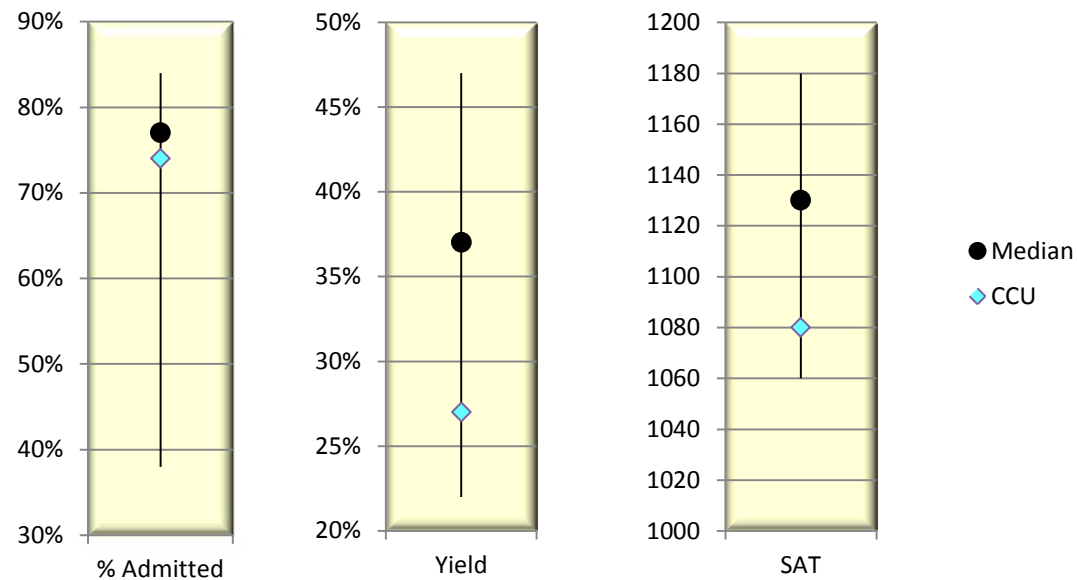
2013-14 IPEDS Data	Percent Admitted*	% Change from 2012	Admission Yield**	% Change from 2012	Top Quartile SAT Comp.***	Change from 2012
<b>Rank Among Peers</b>	<b>5th</b>		<b>8th</b>		<b>7th</b>	
Morehead State University	84%	↓ -9%	37%	↓ -7%	1115	↓ -5
Murray State University	82%	↓ -1%	43%	↔ 0%	1060	↓ -60
Radford University	78%	↑ 2%	33%	↔ 0%	1080	↓ -10
The University of Tennessee at Chattanooga	78%	↑ 2%	40%	↑ 1%	1180	↑ 30
The University of Tennessee-Martin	77%	↑ 1%	47%	↔ 0%	NR	↔ NR
<b>Coastal Carolina University</b>	<b>74%</b>	<b>↓ -1%</b>	<b>27%</b>	<b>↔ 0%</b>	<b>1080</b>	<b>↓ -20</b>
Winthrop University	72%	↑ 1%	35%	↓ -2%	1140	↓ -10
Florida Gulf Coast University	66%	↓ -2%	39%	↓ -2%	1100	↓ -10
The University of West Florida	48%	↓ -13%	22%	↔ 0%	1130	↑ 40
Western Carolina University	38%	↓ -1%	27%	↓ -1%	1130	↔ 0
<b>Median of Peers</b>	<b>77%</b>	<b>↑ 1%</b>	<b>37%</b>	<b>↓ -1%</b>	<b>1130</b>	<b>↑ 10</b>

\*Number of admissions-total divided by the total applicants - ranked lowest to highest

\*\*Number enrolled divided by the number admitted

\*\*\*75th Percentile Verbal and Math combined

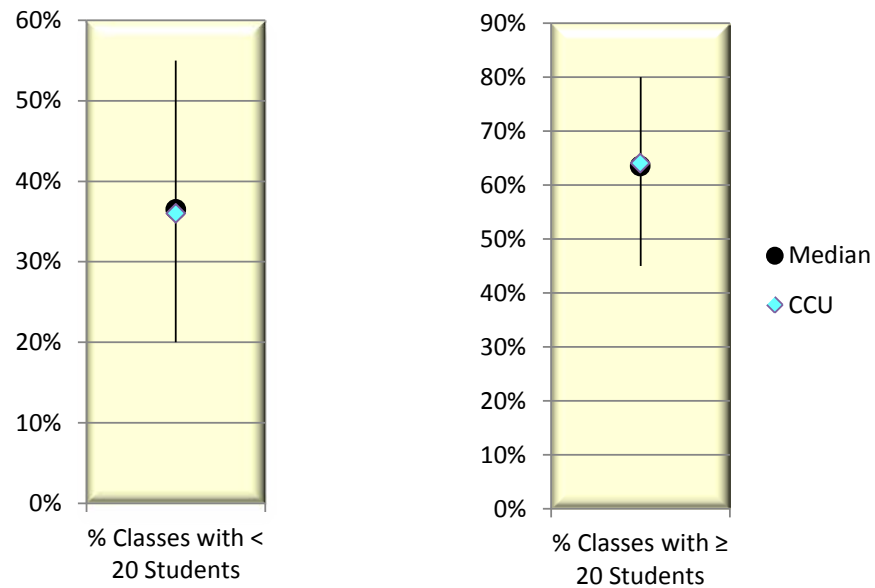
NR: Not reported in the institutions' 2013-14 Common Data Set



**PEER INSTITUTIONS  
Fall 2013**

<b>CLASS SIZE</b>				
CCU's class size nearly equals the peer median.				
Fall 2013-14 Common Data Set	Undergraduate Class Size			
	% Classes with < 20 Students	% Change from 2012	% Classes with ≥ 20 Students	% Change from 2012
<b>Rank Among Peers</b>	<b>6th</b>		<b>4th</b>	
Morehead State University	55%	↓ -4%	45%	↑ 4%
The University of Tennessee-Martin	54%	↑ 3%	46%	↓ -3%
The University of West Florida	32%	↓ -6%	68%	↑ 6%
Winthrop University	49%	↑ 11%	51%	↓ -11%
Radford University	34%	↓ -2%	66%	↑ 2%
<b>Coastal Carolina University</b>	<b>36%</b>	<b>↑ 1%</b>	<b>64%</b>	<b>↓ -1%</b>
The University of Tennessee at Chattanooga	39%	↑ 5%	61%	↓ -5%
Western Carolina University	26%	↓ -2%	74%	↑ 2%
Florida Gulf Coast University	20%	↔ 0%	80%	↔ 0%
<b>Median of Peers</b>	<b>37%</b>	<b>↓ -1%</b>	<b>64%</b>	<b>↑ 1%</b>

Institutions not listed did not complete the Common Data Set.

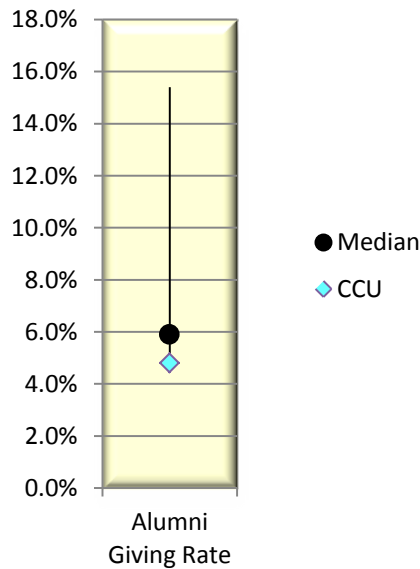


**PEER INSTITUTIONS  
Fall 2013**

<b>ALUMNI GIVING</b>	
CCU ranks 7th among its peers and is 1.1% below the median in alumni giving.	
<b>2013 U.S. News and World Report-Education Rankings</b>	<b>Alumni Giving Rate</b>
<b>Rank Among Peers</b>	<b>7th</b>
The University of West Florida	15.4%
Morehead State University	7.6%
Winthrop University	6.3%
The University of Tennessee-Martin	5.9%
Western Carolina University	5.3%
The University of Tennessee at Chattanooga	5.0%
<b>Coastal Carolina University</b>	<b>4.8%</b>
Radford University	4.5%
<b>Median of Peers</b>	<b>5.9%</b>

Methodology: Number of undergraduate alumni donors in 2012-13 divided by the number of undergraduate alumni of record in 2012-13

Florida Gulf Coast did not disclose a rate





# Coastal Carolina University

## **Current Aspirant Institutions**

Appalachian State University

College of Charleston

James Madison University

University of North Carolina at Wilmington

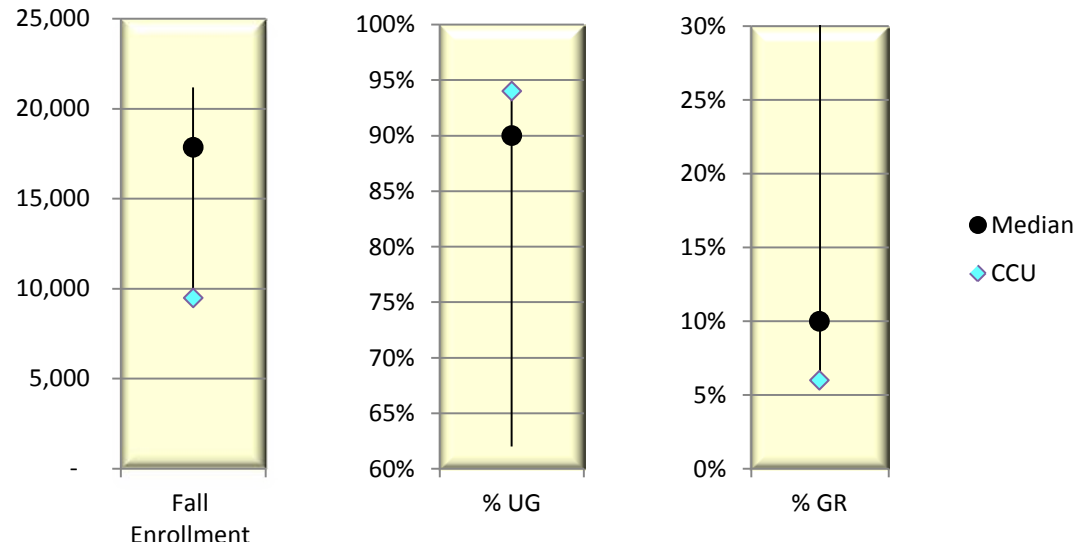
University of Texas at Dallas

**ASPIRANT INSTITUTIONS**  
Fall 2013

**ENROLLMENT**

CCU's graduate student enrollment is 4% below the median of the aspirant group. Total enrollment for the University is far below the median of the aspirants.

2013-14 Common Data Set	Total Fall 2013 Enrollment	% Change from 2012	Level			
			Under-graduate	% Change from 2012	Grad/Prof.	% Change from 2012
<b>Rank Among Aspirants</b>	<b>6th</b>		<b>1st</b>		<b>6th</b>	
James Madison University	20,181	↑ 1.3%	91%	↔ 0%	9%	↔ 0%
University of Texas at Dallas	21,193	↑ 6.9%	62%	↑ 1%	38%	↓ -1%
Appalachian State University	17,838	↑ 1.4%	90%	↑ 1%	10%	↓ -1%
University of North Carolina-Wilmington	13,937	↑ 1.5%	89%	↓ -1%	11%	↑ 1%
College of Charleston	11,619	↓ -0.9%	90%	↔ 0%	10%	↔ 0%
<b>Coastal Carolina University</b>	<b>9,478</b>	<b>↑ 1.5%</b>	<b>94%</b>	<b>↔ 0%</b>	<b>6%</b>	<b>↔ 0%</b>
<b>Median of Aspirants</b>	<b>17,838</b>	<b>↑ 1.4%</b>	<b>90%</b>	<b>↔ 0%</b>	<b>10%</b>	<b>↔ 0%</b>

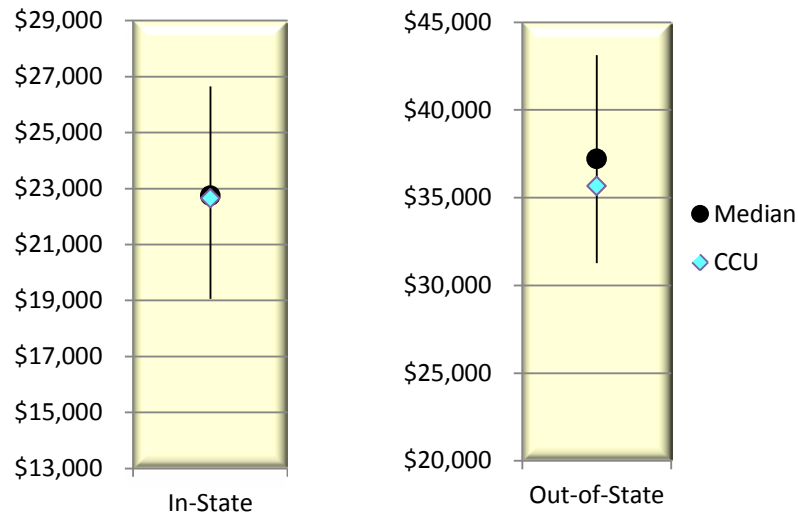


**ASPIRANT INSTITUTIONS**  
Fall 2013

<b>COST OF ATTENDANCE</b>				
CCU ranks fourth among aspirants for in-state and out-of-state cost of attendance.				
Out-of-state cost of attendance is below the median.				
Fall 2013 IPEDS Data	Total Cost of Attendance for Student Living on Campus			
	In-State*	% Change from 2012	Out-of-State**	% Change from 2012
<b>Rank Among Aspirants</b>	<b>4th</b>		<b>4th</b>	
College of Charleston	\$26,656	↑ 4.5%	\$43,120	↑ 5.3%
University of Texas at Dallas	\$24,784	↑ 1.7%	\$39,958	↑ 2.9%
James Madison University	\$22,740	↑ 3.1%	\$37,218	↑ 3.2%
<b>Coastal Carolina University</b>	<b>\$22,656</b>	<b>↑ 1.0%</b>	<b>\$35,666</b>	<b>↑ 2.6%</b>
University of North Carolina at Wilmington	\$20,601	↑ 10.5%	\$32,738	↑ 6.4%
Appalachian State University	\$19,058	↑ 6.4%	\$31,266	↑ 4.4%
<b>Median of Aspirants</b>	<b>\$22,740</b>	<b>↑ 3.1%</b>	<b>\$37,218</b>	<b>↑ 3.2%</b>

\*Includes in-state tuition and fees, books and supplies, on campus room and board, and other on campus expenses.

\*\*Includes out-of-state tuition and fees, books and supplies, on campus room and board, and other on campus expenses.

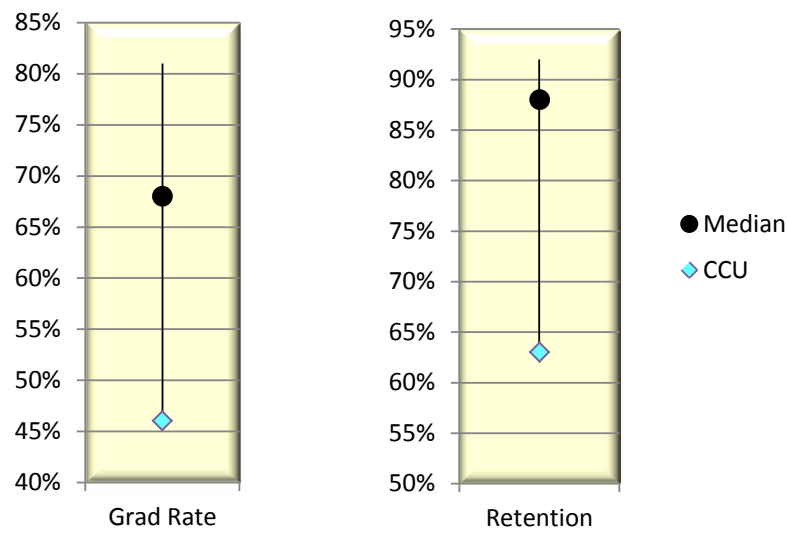


**ASPIRANT INSTITUTIONS**  
Fall 2013

**GRADUATION AND RETENTION**

CCU ranks last in graduation and retention rates compared to aspirants and is below the median in both categories.

2013-14 Common Data Set	6-Year Graduation Rate	% Change from 2012	First-year Full-time Retention	% Change from 2012
<b>Rank Among Aspirants</b>	<b>6th</b>		<b>6th</b>	
James Madison University	81%	↑ 1%	92%	↑ 1%
College of Charleston	65%	↓ -4%	83%	↑ 2%
University of North Carolina-Wilmington	71%	↑ 3%	86%	↔ 0%
Appalachian State University	68%	↑ 1%	87%	↓ -1%
University of Texas at Dallas	63%	↓ -1%	89%	↑ 4%
<b>Coastal Carolina University</b>	<b>46%</b>	<b>↓ -1%</b>	<b>63%</b>	<b>↑ 3%</b>
<b>Median of Aspirants</b>	<b>68%</b>	<b>↔ 0%</b>	<b>88%</b>	<b>↑ 1%</b>



**ASPIRANT INSTITUTIONS**  
Fall 2013

**ADMISSIONS**

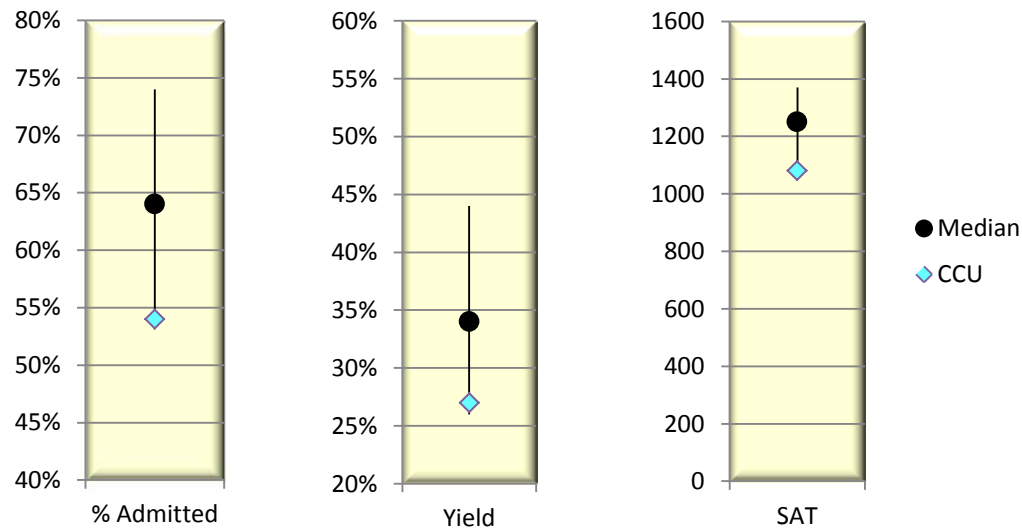
CCU has the highest admission rate of the aspirants and is 7% below the median of aspirants in admissions yield. CCU is 170 points below the aspirant median in top quartile SAT scores.

Fall 2013 IPEDS Data	Percent Admitted*	% Change from 2012	Admission Yield**	% Change from 2012	Top Quartile SAT Comp.***	Change from 2012
<b>Rank Among Aspirants</b>	<b>6th</b>		<b>5th</b>		<b>6th</b>	
<b>Coastal Carolina University</b>	<b>74%</b>	<b>↓ -1%</b>	<b>27%</b>	<b>↔ 0%</b>	<b>1080</b>	<b>↓ -20</b>
College of Charleston	70%	↓ -4%	39%	↑ 10%	1260	↓ -20
James Madison University	64%	↑ 2%	30%	↓ -7%	1250	↑ 20
Appalachian State University	63%	↑ 2%	26%	↓ -3%	1240	↔ 0
University of Texas-Dallas	59%	↑ 6%	44%	↑ 8%	1370	↑ 120
University of North Carolina at Wilmington	54%	↑ 2%	34%	↓ -8%	1250	↓ -140
<b>Median of Aspirants</b>	<b>64%</b>	<b>↑ 3%</b>	<b>34%</b>	<b>↓ -2%</b>	<b>1250</b>	<b>↔ 0</b>

\*Number of admissions-total divided by the total applicants - ranked lowest to highest

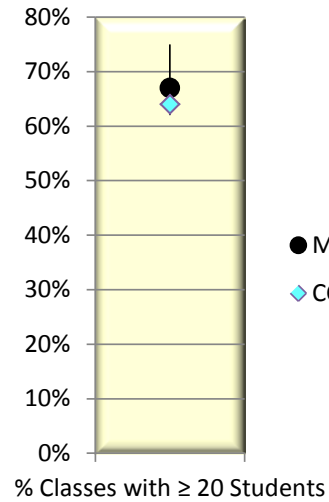
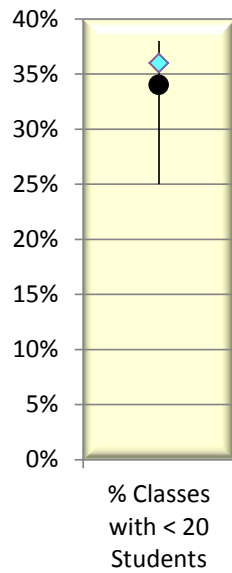
\*\*Number enrolled divided by the number admitted

\*\*\*75th Percentile Verbal and Math combined



**ASPIRANT INSTITUTIONS  
Fall 2013**

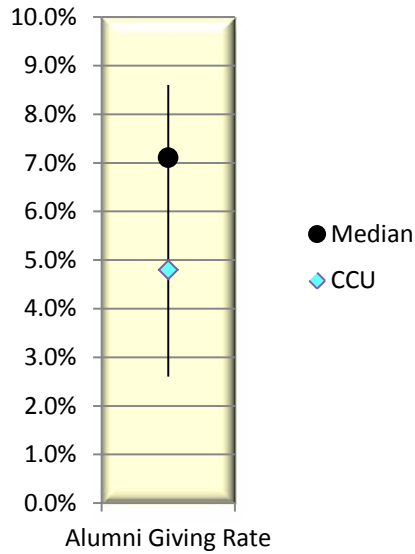
<b>CLASS SIZE</b>				
CCU's ranking is comparable to the median class size of aspirants.				
Fall 2013 -14 Common Data Set	Undergraduate Class Size			
	% Classes with < 20 Students	% Change from 2012	% Classes with ≥ 20 Students	% Change from 2012
<b>Rank Among Aspirants</b>	<b>3rd</b>		<b>3rd</b>	
Appalachian State University	38%	↓ -3%	62%	↑ 3%
College of Charleston	37%	↑ 2%	63%	↓ -2%
<b>Coastal Carolina University</b>	<b>36%</b>	↑ 1%	<b>64%</b>	↓ -1%
University of North Carolina at Wilmington	34%	↑ 1%	66%	↓ -1%
James Madison University	33%	↑ 1%	67%	↓ -1%
University of Texas at Dallas	25%	↔ 0%	<b>75%</b>	↔ 0%
<b>Median of Aspirants</b>	<b>34%</b>	↑ 1%	<b>67%</b>	↔ 0%



**ASPIRANT INSTITUTIONS**  
**Fall 2013**

<b>ALUMNI GIVING</b>	
CCU is below the aspirant median for alumni giving by 2.3%.	
<b>2013 U.S. News and World Report-Education Rankings</b>	<b>Alumni Giving Rate</b>
<b>Rank Among Aspirants</b>	<b>5th</b>
Appalachian State University	8.6%
James Madison University	7.2%
College of Charleston	7.1%
The University of North Carolina at Wilmington	5.9%
<b>Coastal Carolina University</b>	<b>4.8%</b>
The University of Texas-Dallas	2.6%
<b>Median of Aspirants</b>	<b>7.1%</b>

Methodology: Number of undergraduate alumni donors in 2012-13 divided by the number of undergraduate alumni of record in 2012-13



# Coastal Carolina University

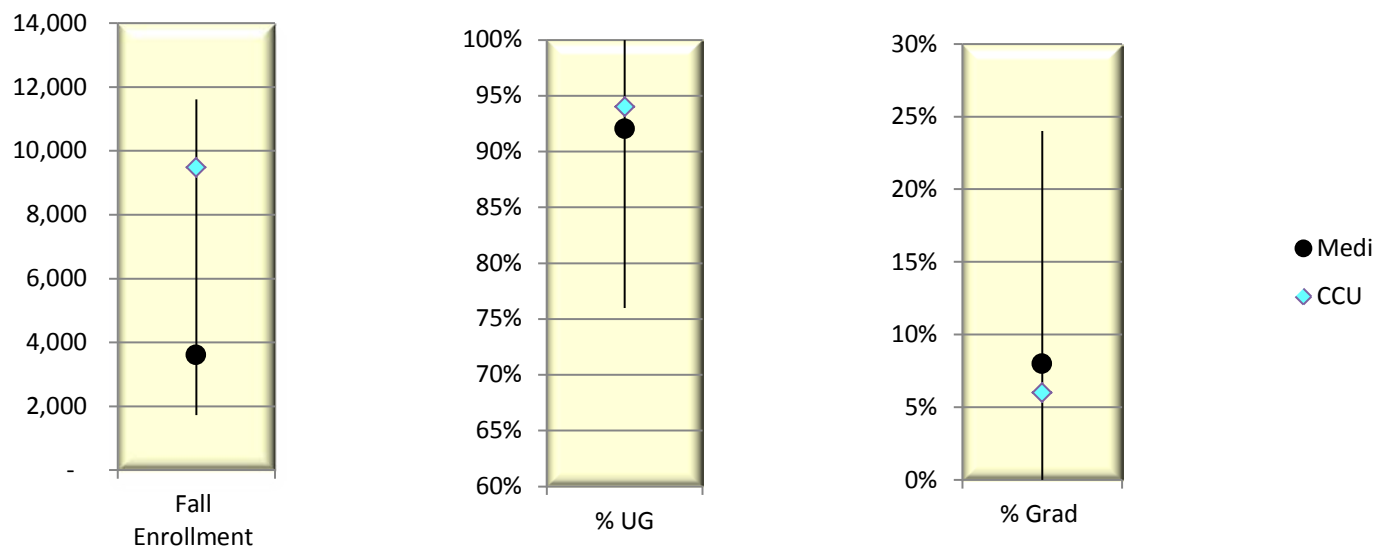
## **Current SC Comprehensive Institutions**

The Citadel  
College of Charleston  
Francis Marion University  
Lander University  
South Carolina State  
USC-Aiken  
USC-Beaufort  
USC-Upstate  
Winthrop University



**SC COMPREHENSIVE INSTITUTIONS  
Fall 2013**

<b>ENROLLMENT</b>						
CCU ranks second in total enrollment among the SC Comprehensive Institutions and sixth in graduate students as a percent of total enrollment.						
2013-14 Common Data Set	Total Fall 2014 Enrollment	% Change from 2012	Level			
			Under-graduate	% Change from 2012	Grad/Prof.	% Change from 2012
<b>Rank Among SC Comprehensive Institutions</b>	<b>2nd</b>		<b>5th</b>		<b>6th</b>	
College of Charleston	11,619	↓ -0.9%	90%	↔ 0%	10%	↔ 0%
<b>Coastal Carolina University</b>	<b>9,478</b>	<b>↑ 1.5%</b>	<b>94%</b>	<b>↔ 0%</b>	<b>6%</b>	<b>↔ 0%</b>
Winthrop University	6,130	↓ -0.7%	82%	↔ 0%	18%	↔ 0%
USC-Upstate	5,445	↓ -2.1%	98%	↔ 0%	2%	↔ 0%
Francis Marion University	4,058	↓ -0.9%	92%	↔ 0%	8%	↔ 0%
SC State University	3,463	↓ -9.9%	85%	↓ -1%	15%	↑ 1%
The Citadel	3,598	↑ 2.8%	76%	↑ 1%	24%	↓ -1%
USC-Aiken	3,299	↑ 2.7%	96%	↓ -1%	4%	↑ 1%
Lander University	2,877	↓ -6.0%	97%	↔ 0%	3%	↔ 0%
USC-Beaufort	1,724	↓ -6.0%	100%	↔ 0%	0%	↔ 0%
<b>Median of SC Comprehensive Institutions</b>	<b>3,598</b>	<b>↓ -5.8%</b>	<b>92%</b>	<b>↓ -1%</b>	<b>8%</b>	<b>↔ 0%</b>



**SC COMPREHENSIVE INSTITUTIONS**  
**Fall 2013**

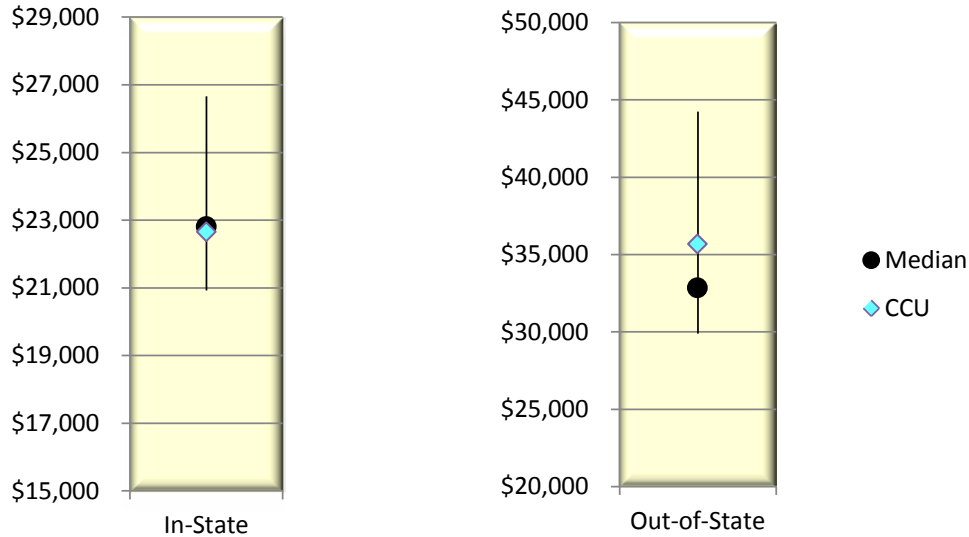
**COST OF ATTENDANCE**

CCU ranks sixth for in-state cost of attendance among SC Comprehensive Institutions.

Fall 2013 IPEDS Data	Total Cost of Attendance for Student Living on Campus			
	In-State*	% Change from 2012	Out-of-State**	% Change from 2012
<b>Rank Among SC Comprehensive Institutions</b>	<b>6th</b>		<b>4th</b>	
College of Charleston	\$26,656	↑ 4.5%	\$43,120	↑ 5.3%
SC State University	\$26,244	↑ 3.1%	\$35,378	↑ 2.9%
Winthrop University	\$25,450	↑ 2.4%	\$38,020	↑ 4.6%
The Citadel	\$25,442	↑ 2.4%	\$44,243	↑ 2.6%
USC-Upstate	\$22,804	↑ 3.6%	\$32,832	↑ 3.4%
<b>Coastal Carolina University</b>	<b>\$22,656</b>	<b>↑ 1.0%</b>	<b>\$35,666</b>	<b>↑ 2.6%</b>
Lander University	\$22,300	↑ 0.7%	\$31,336	↑ 1.4%
USC-Aiken	\$21,701	↑ 4.7%	\$30,733	↑ 4.7%
USC-Beaufort	\$21,396	↓ -4.0%	\$31,248	↓ -1.9%
Francis Marion University	\$20,923	↑ 2.7%	\$29,901	↑ 5.2%
<b>Median of SC Comprehensive Institutions</b>	<b>\$22,804</b>	<b>↑ 1.0%</b>	<b>\$32,832</b>	<b>↑ 10.7%</b>

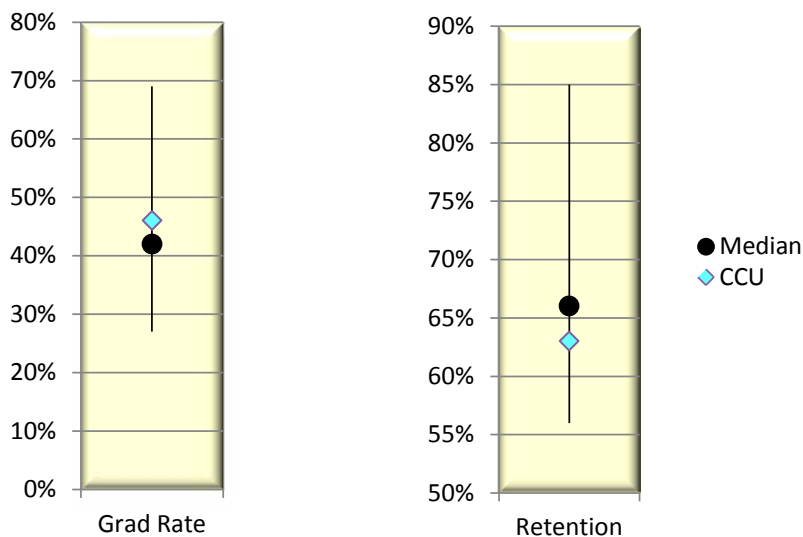
\*Includes in-state tuition and fees, books and supplies, on campus room and board, and other on campus expenses.

\*\*Includes out-of-state tuition and fees, books and supplies, on campus room and board, and other on campus expenses.



**SC COMPREHENSIVE INSTITUTIONS  
Fall 2013**

<b>GRADUATION AND RETENTION</b>					
CCU ranks fifth for graduation rate among SC Comprehensive Institutions.					
2013-14 CHEMIS	6-Year Graduation Rate	% Change from 2012		First-year Full-time Retention	% Change from 2012
Rank Among SC Comprehensive Institutions	5th			7th	
The Citadel	69%	↑	3%	85%	↑ 2%
College of Charleston	65%	↑	1%	83%	↑ 2%
Winthrop University	56%	↑	3%	72%	↓ -1%
<b>Coastal Carolina University</b>	<b>46%</b>	↓	<b>-1%</b>	<b>63%</b>	↑ <b>3%</b>
Francis Marion University	41%	↓	-1%	67%	↓ -2%
USC-Aiken	42%	↑	1%	66%	↔ 0%
Lander University	52%	↓	-2%	61%	↑ 2%
USC-Upstate	41%	↑	3%	66%	↔ 0%
SC State University	36%	↑	2%	60%	↓ -1%
USC-Beaufort	27%	↑	4%	56%	↑ 6%
<b>Median of SC Comprehensive Institutions</b>	<b>42%</b>	↓	<b>-1%</b>	<b>66%</b>	↔ <b>0%</b>



**SC COMPREHENSIVE INSTITUTIONS**  
Fall 2013

**ADMISSIONS**

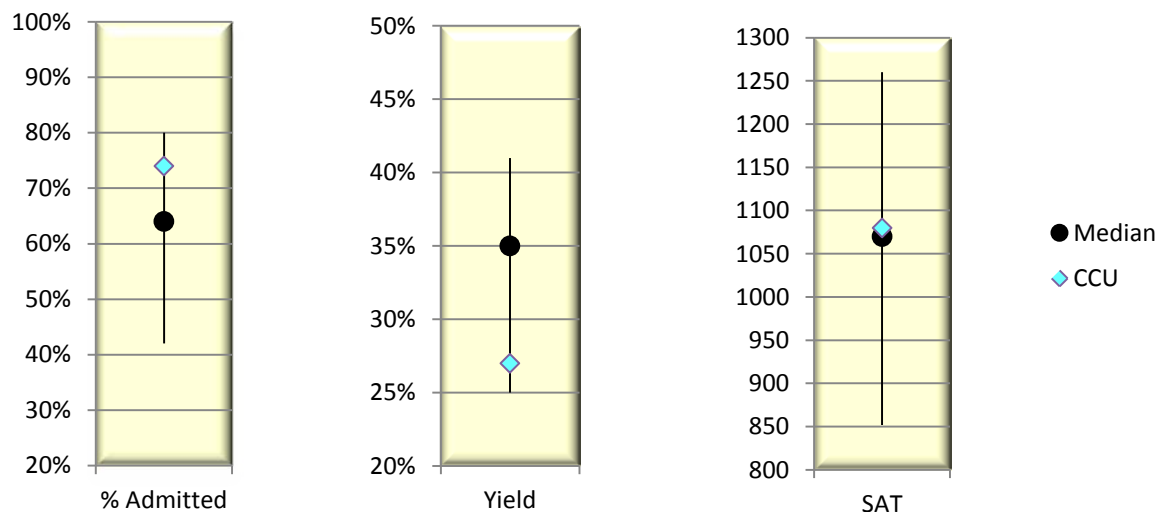
CCU is ranked above the median of SC Comprehensive Institutions in percent admitted and below the median in yield percentage. CCU ranks fourth in top quartile SAT scores and is 10 points above the group median.

Fall 2013 IPEDS Data	Percent Admitted*	% Change from 2012	Admission Yield**	% Change from 2012	Top Quartile SAT Comp. ***	% Change from 2012
<b>Rank Among SC Comprehensive Institutions</b>	<b>2</b>		<b>8</b>		<b>4</b>	
Citadel	80%	↑ 3%	33%	↔ 0%	1190	↑ 20
<b>Coastal Carolina University</b>	<b>74%</b>	<b>↓ -1%</b>	<b>27%</b>	<b>↔ 0%</b>	<b>1080</b>	<b>↓ -20</b>
USC-Beaufort	73%	↓ -2%	40%	↔ 0%	1010	↔ 0
Winthrop University	72%	↑ 1%	35%	↓ -2%	1140	↓ -10
College of Charleston	70%	↓ -4%	26%	↔ 0%	1260	↓ -20
USC-Upstate	64%	↓ -1%	41%	↑ 1%	1070	↑ 10
Francis Marion University	57%	↓ -2%	33%	↓ -2%	1060	↔ 0
SC State	51%	↓ -46%	25%	↑ 2%	852	↓ -38
USC-Aiken	51%	↔ 0%	39%	↓ -4%	1080	↓ -10
Lander University	42%	↔ 0%	40%	↓ -4%	1050	↓ -10
<b>Median of SC Comprehensive Institutions</b>	<b>64%</b>	<b>↓ -7%</b>	<b>35%</b>	<b>↓ -2%</b>	<b>1070</b>	<b>↑ 10</b>

\*Number of admissions-total divided by the total applicants - ranked lowest to highest

\*\*Number enrolled divided by the number admitted

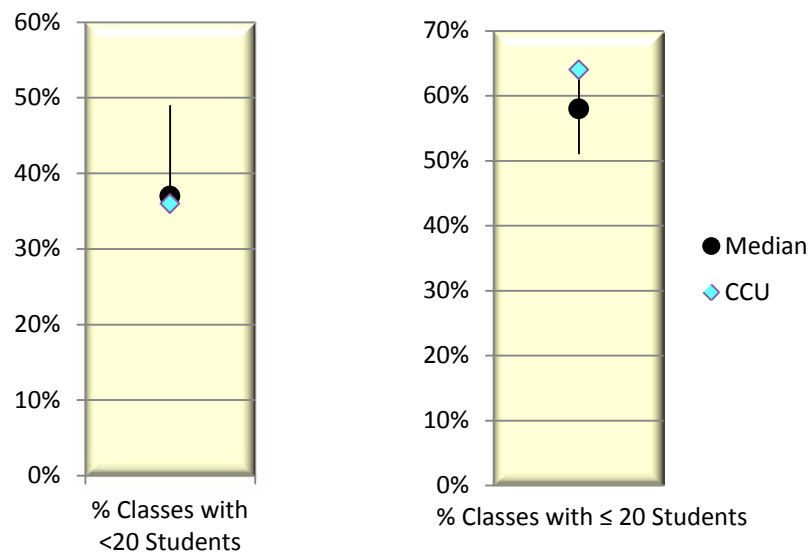
\*\*\*75th Percentile Verbal and Math combined



**SC COMPREHENSIVE INSTITUTIONS**  
Fall 2013

<b>CLASS SIZE</b>				
CCU's ranking is comparable to the median class size for SC Comprehensive Institutions.				
Fall 2013-14 Common Data Set	Undergraduate Class Size			
	% Classes with <20 Students	% Change from 2012	% Classes with ≥20 Students	% Change from 2012
<b>Rank Among SC Comprehensive Institutions</b>	<b>5th</b>		<b>5th</b>	
USC-Aiken	47%	↔ 0%	53%	↔ 0%
Citadel	37%	↓ -3%	63%	↑ 3%
Winthrop University	49%	↑ 12%	51%	↓ -12%
<b>Coastal Carolina University</b>	<b>36%</b>	↔ 0%	<b>64%</b>	↔ 0%
College of Charleston	37%	↑ 4%	63%	↓ -4%
<b>Median of SC Comprehensive Institutions</b>	<b>37%</b>	↑ 0%	<b>58%</b>	↓ -4%

Institutions not listed did not complete the Common Data Set.

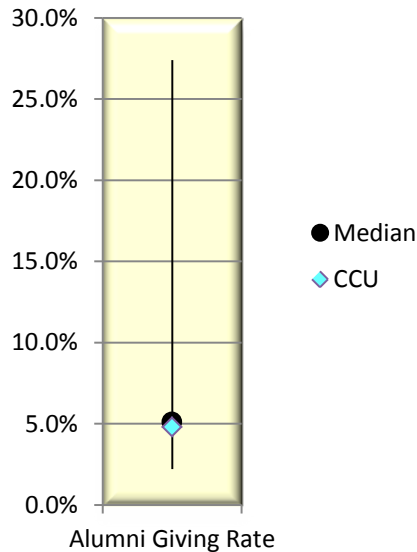


**SC COMPREHENSIVE INSTITUTIONS  
Fall 2013**

<b>ALUMNI GIVING</b>	
CCU nearly equals the SC Comprehensive median.	
<b>2013 U.S. News and World Report-Education Rankings</b>	<b>Alumni Giving Rate</b>
<b>Rank Among SC Comprehensive Institutions</b>	<b>5th</b>
The Citadel	27.4%
College of Charleston	7.1%
USC-Aiken	6.7%
Winthrop University	6.3%
<b>Coastal Carolina University</b>	<b>4.8%</b>
USC-Beaufort	3.5%
Francis Marion University	2.9%
USC-Upstate	2.2%
<b>Median of SC Comprehensive Institutions</b>	<b>5.1%</b>

Methodology: Number of undergraduate alumni donors in 2012-13 divided by the number of undergraduate alumni of record in 2012-13

Lander and South Carolina State did not disclose a rate



## CCU Status for Fall 2013 in Relation to Peer, Aspirant and SC Comprehensive Institution Medians

Variable	CCU	Peer Median	CCU to Peer Median Variance	Aspirant Median	CCU to Aspirant Median Variance	SC Comprehensive Median	CCU to SC Comprehensive Median Variance
<b>Enrollment</b>							
Total Enrollment	9,478	10,943	(1,465)	17,838	(8,360)	3,598	5,880
Percent Undergrad	94%	88%	6%	90%	4%	92%	2%
Percent Grad	6%	12%	-6%	10%	-4%	8%	-2%
<b>Cost of Attendance</b>							
In-State	\$22,656	\$19,102	\$3,554	\$22,740	(\$84)	\$22,804	(\$148)
Out-of-State	\$35,666	\$32,618	\$3,048	\$37,218	(\$1,552)	\$32,832	\$2,834
<b>Key Performance Indicators</b>							
6-Year Graduation	46%	51%	-5%	68%	-22%	42%	4%
First-Year Full Time Retention	63%	71%	-8%	88%	-25%	66%	-3%
<b>Undergraduate Admissions</b>							
Percent Admitted	74%	77%	-3%	64%	10%	64%	10%
Admission Yield	27%	37%	-10%	34%	-7%	35%	-8%
Top Quartile SAT Comp.	1080	1130	-50	1250	-170	1070	10
<b>Undergraduate Class Size</b>							
< 20 Students	36%	36%	0%	34%	2%	37%	-1%
> 20 Students	64%	64%	0%	66%	-2%	58%	6%
<b>Full Time to Part Time Faculty</b>							
Full Time	61%	60%	1%	65%	-4%	60%	1%
Part Time	39%	40%	-1%	35%	4%	41%	-2%
<b>Alumni Giving</b>							
Alumni Giving Rate	4.8%	5.9%	-1.1%	7.1%	-2.3%	5.1%	-0.3%

Note: The common data set was not available for the following institutions: Francis Marion University, Lander University, Murray State, South Carolina State, USC Beaufort, Florida Gulf Coast