

WACCAMAW
WATERSHED
ACADEMY

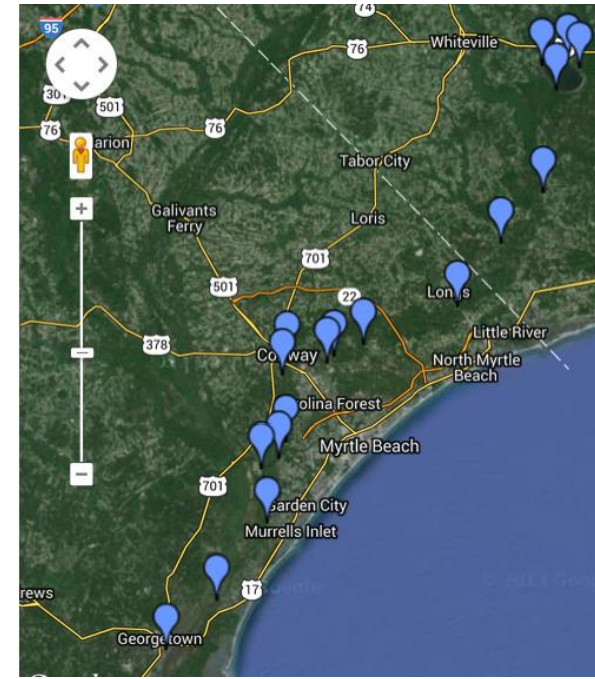
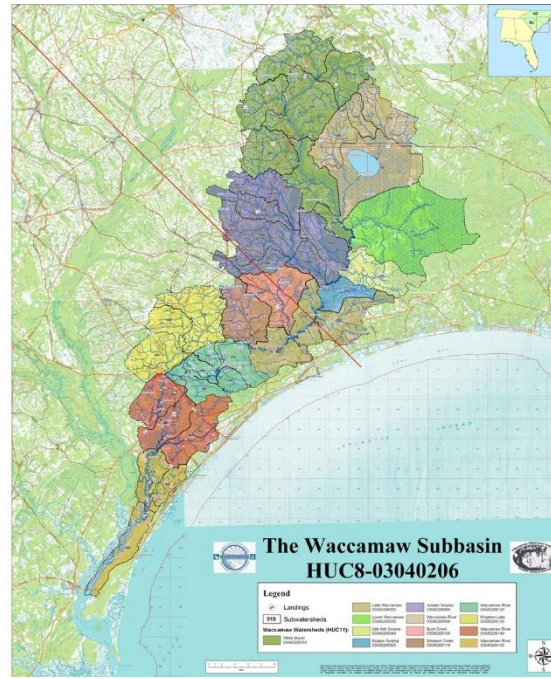
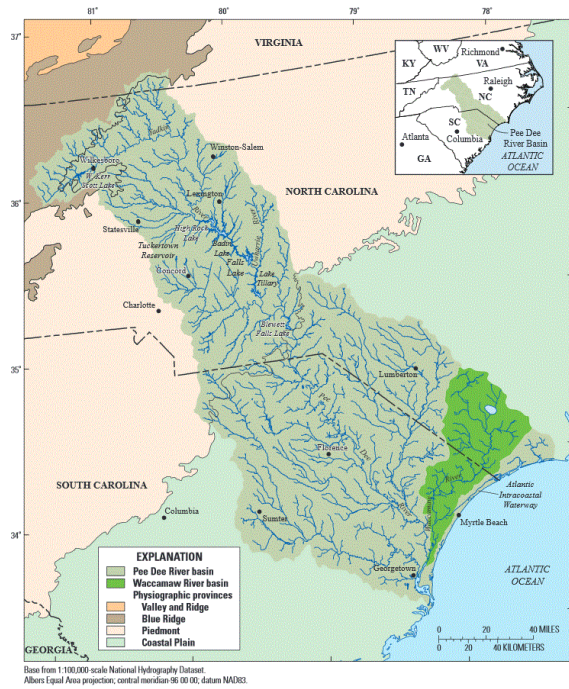


Current Water Quality Trends in the Waccamaw Watershed

NC Volunteer Recognition Luncheon

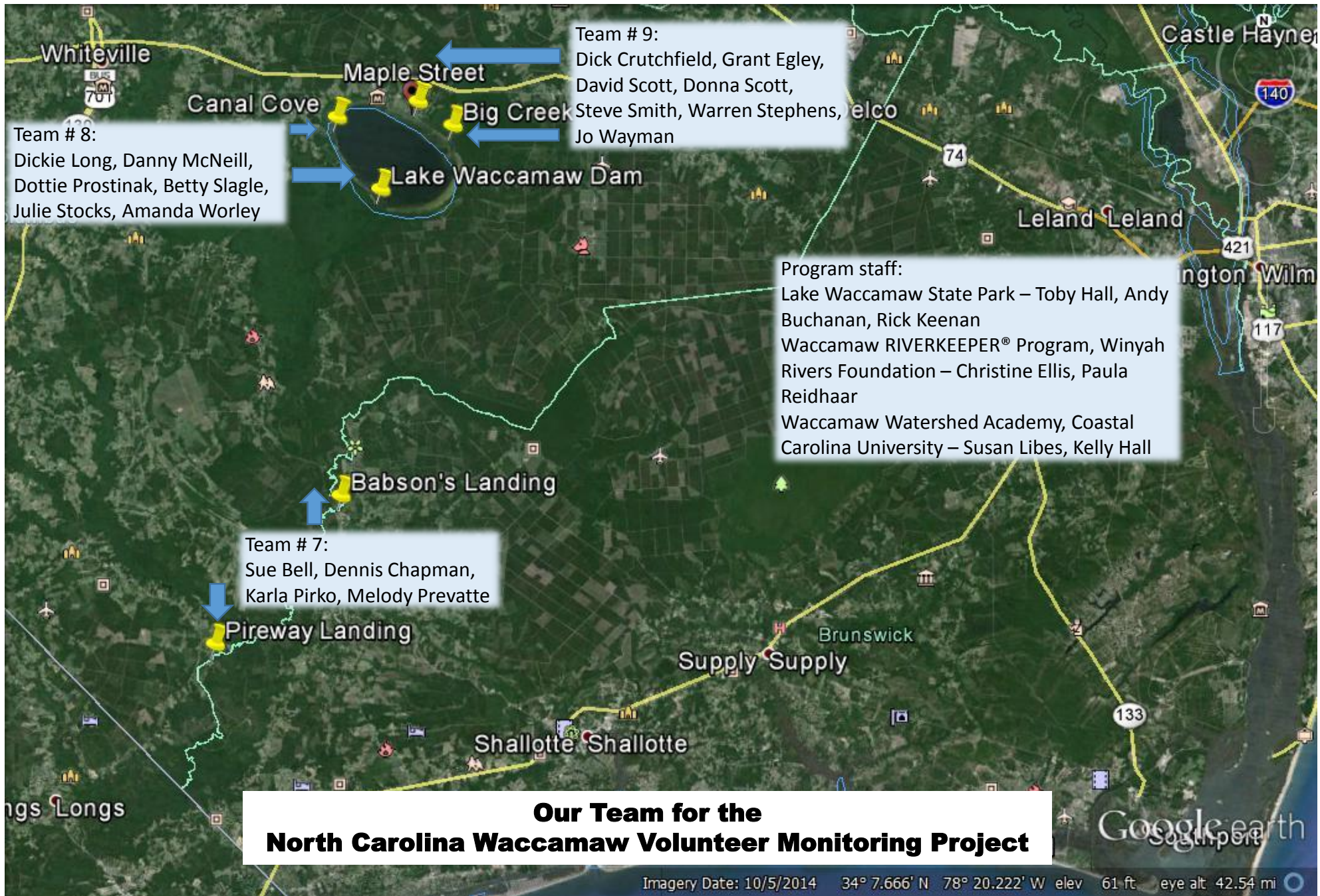
March 9, 2015





TODAY'S TOPICS:

- Data collected to date
- Comparison of Lake to River
- Notable trends



Team # 8:
Dickie Long, Danny McNeill,
Dottie Prostinak, Betty Slagle,
Julie Stocks, Amanda Worley

Team # 9:
Dick Crutchfield, Grant Egley,
David Scott, Donna Scott,
Steve Smith, Warren Stephens,
Jo Wayman

Program staff:
Lake Waccamaw State Park – Toby Hall, Andy
Buchanan, Rick Keenan
Waccamaw RIVERKEEPER® Program, Winyah
Rivers Foundation – Christine Ellis, Paula
Reidhaar
Waccamaw Watershed Academy, Coastal
Carolina University – Susan Libes, Kelly Hall

Team # 7:
Sue Bell, Dennis Chapman,
Karla Pirko, Melody Prevatte

**Our Team for the
North Carolina Waccamaw Volunteer Monitoring Project**

**Data from
our awesome
volunteers!**

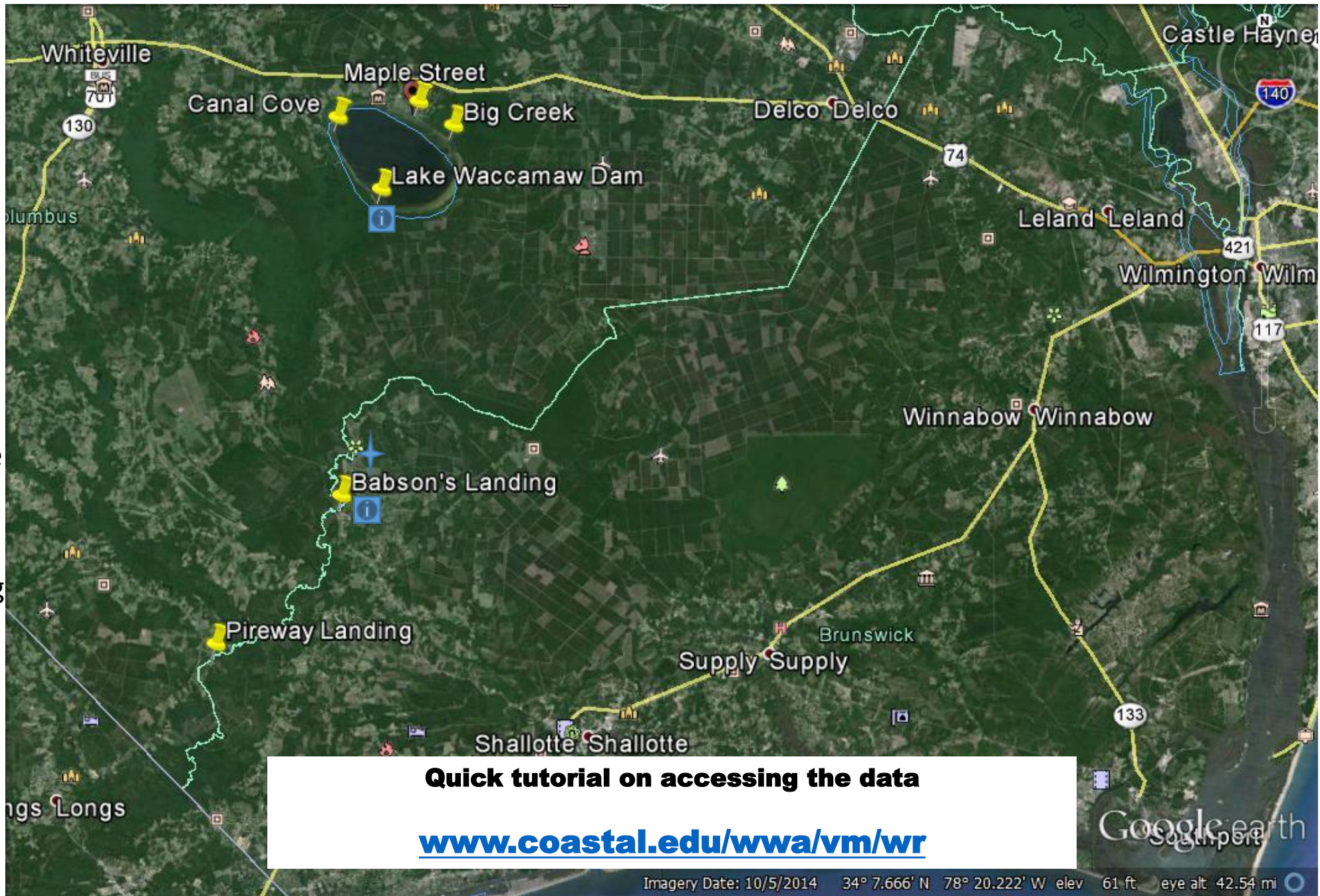
Lake Waccamaw
Team #9 (2 sites)
73 data sets/site



Lake Waccamaw
Team #8 (2 sites)
73 data sets/site

Waccamaw River
Team #7 (2 sites)
40 data sets/site

Waccamaw River
Teams #1-6 (12 sites)
>200 data sets/site

*Honorable mention –
Murrells Landing
(Susan Libes' site)
2910 data sets since
1998!*



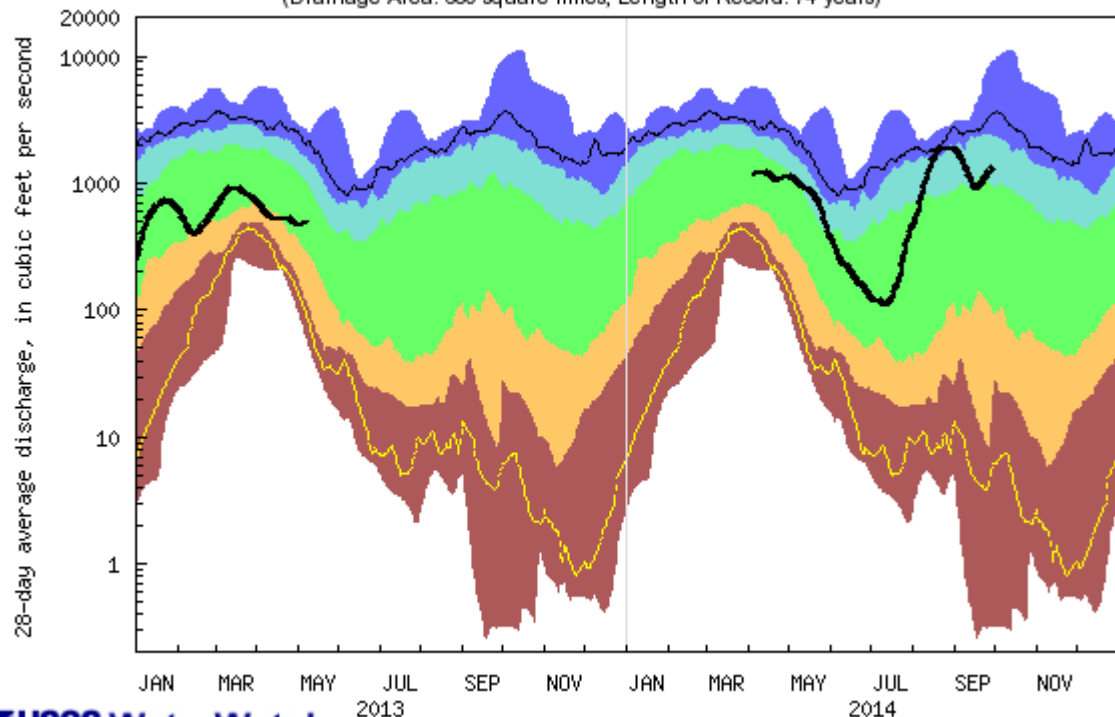
-  USGS Gage
-  NCDENR Ambient Monitoring

Quick tutorial on accessing the data
www.coastal.edu/wwa/vm/wr

United States Geological Survey (USGS) Streamflow Duration Hydrograph

USGS Gage at Babson's Landing

USGS 02109600 WACCAMAW RIVER AT FREELAND, NC
(Drainage Area: 680 square miles, Length of Record: 74 years)

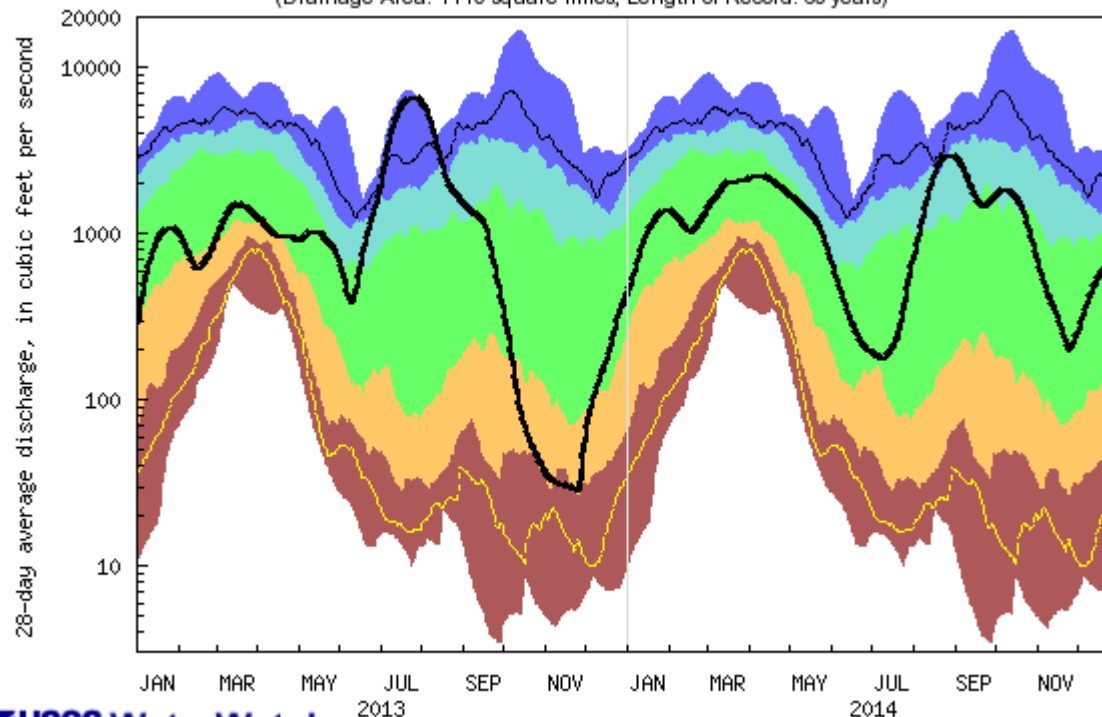


USGS WaterWatch

Last updated: 2015-03-06

USGS Gage at Highway 9

USGS 02110500 WACCAMAW RIVER NEAR LONGS, SC
(Drainage Area: 1110 square miles, Length of Record: 63 years)



USGS WaterWatch

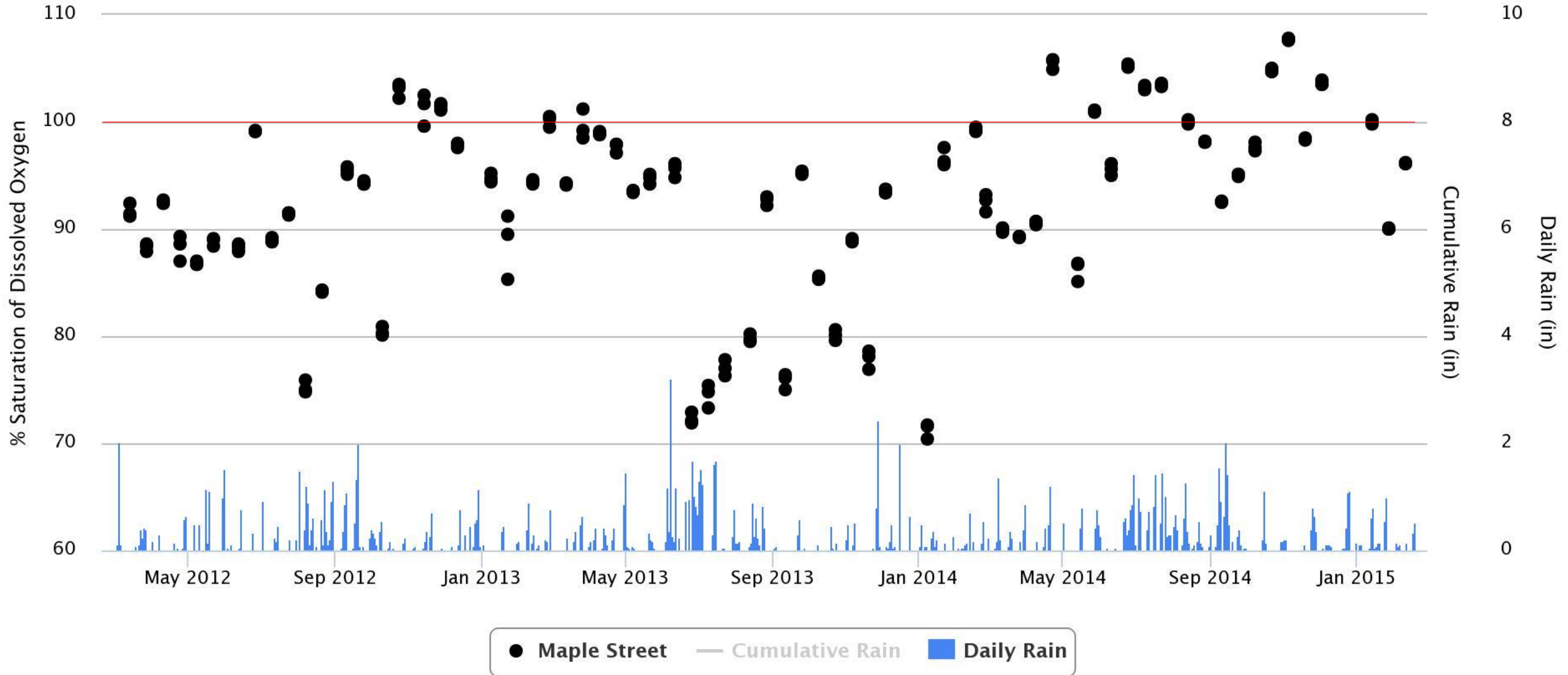
Last updated: 2015-03-06

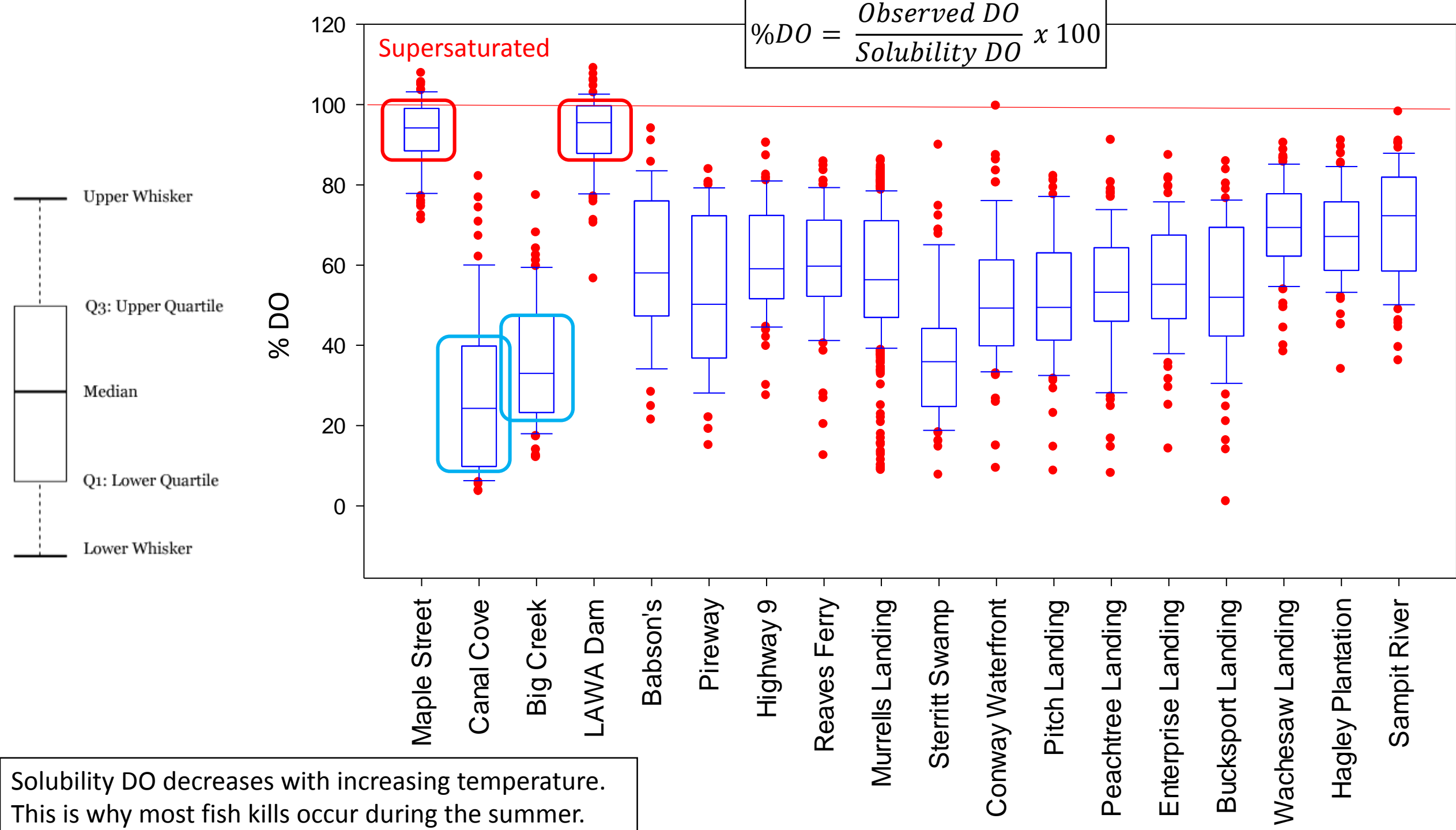
Explanation - Percentile classes					
lowest-10th percentile	10-24	25-75	76-90	90th percentile-highest	Flow
Much below normal	Below normal	Normal	Above normal	Much above normal	

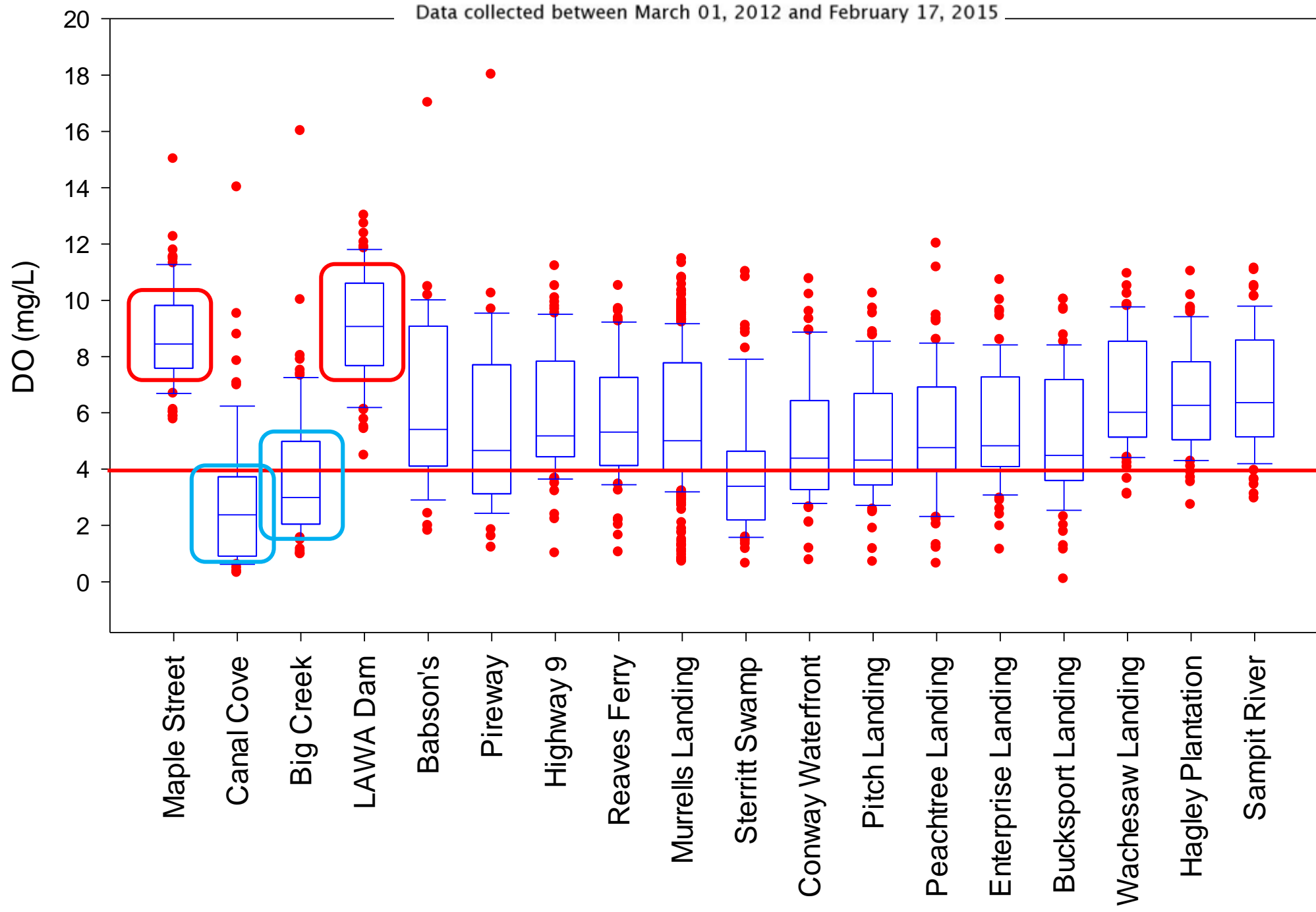
% Saturation of Dissolved Oxygen for Maple Street

Data collected between March 01, 2012 and February 17, 2015

Hold down shift key to pan





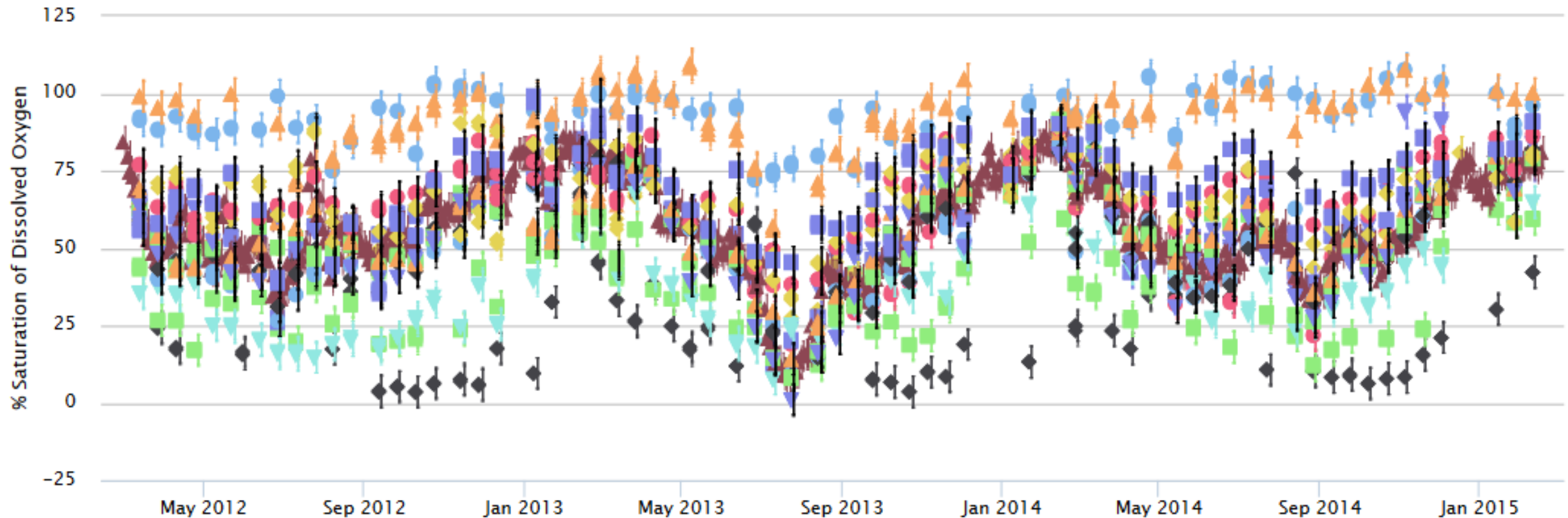


% Saturation of Dissolved Oxygen



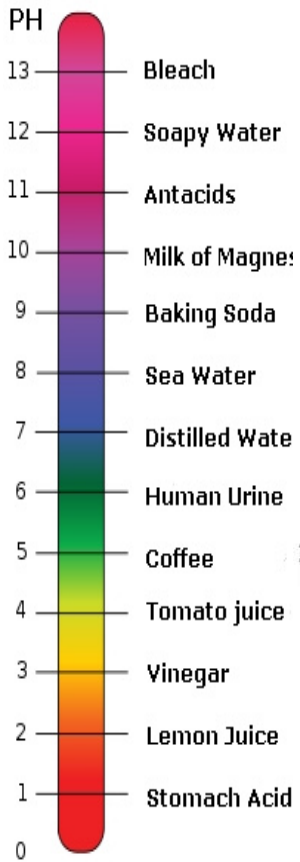
Data collected between March 01, 2012 and February 17, 2015

Click and drag to zoom in. Hold down shift key to pan.



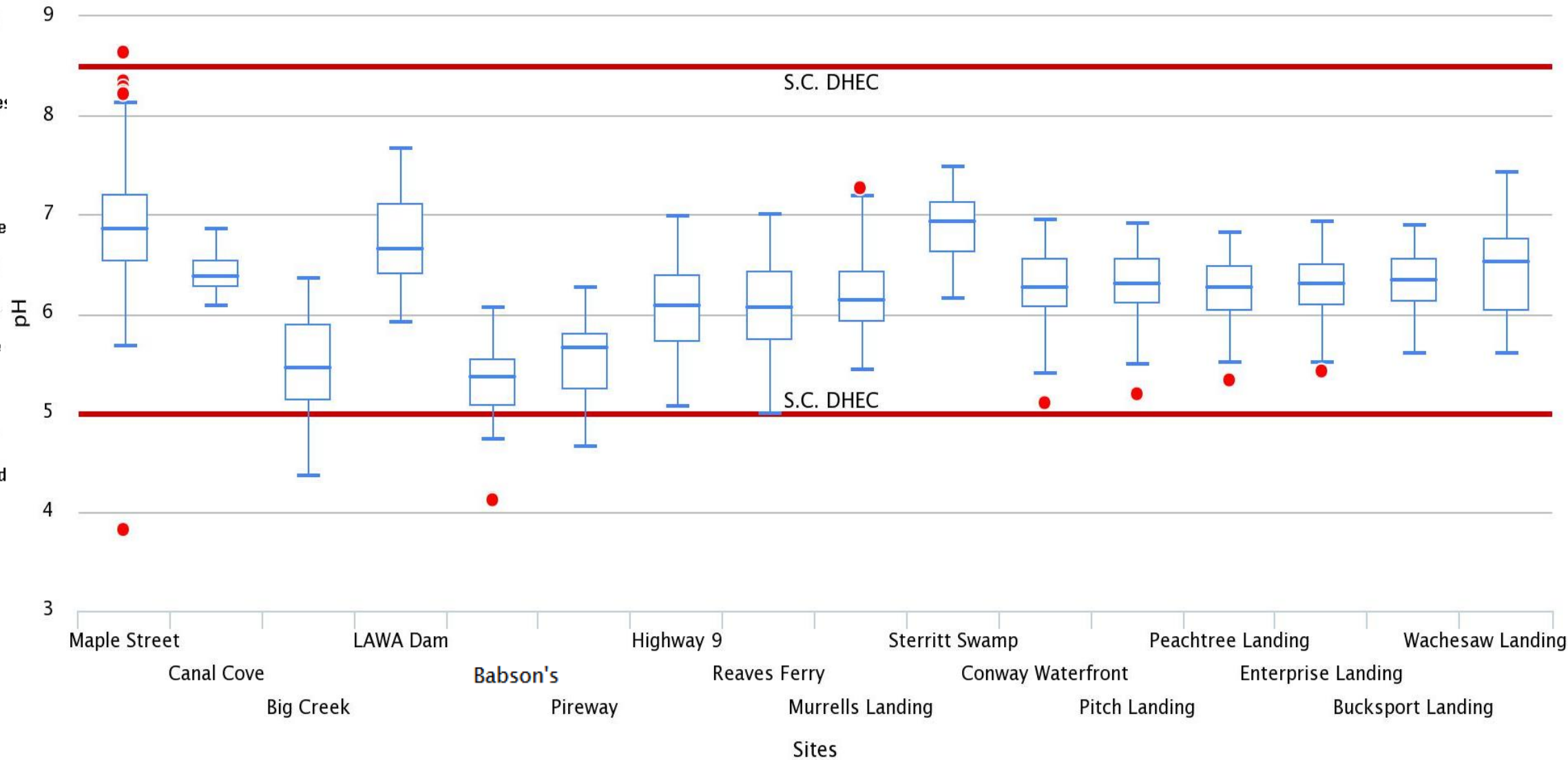
- Maple Street
- ◆ Canal Cove
- Big Creek
- ▲ LAWA Dam
- ▼ Babson's
- Piroway
- ◆ Highway 9
- Reaves Ferry
- ▲ Murrells Landing
- ▼ Sterritt Swamp
- Conway Waterfront
- ◆ Pitch Landing
- Peachtree Landing
- ▲ Enterprise Landing
- ▼ Bucksport Landing
- Wachesaw Landing
- ◆ Hagley Plantation
- Sampit River

Acidity



pH

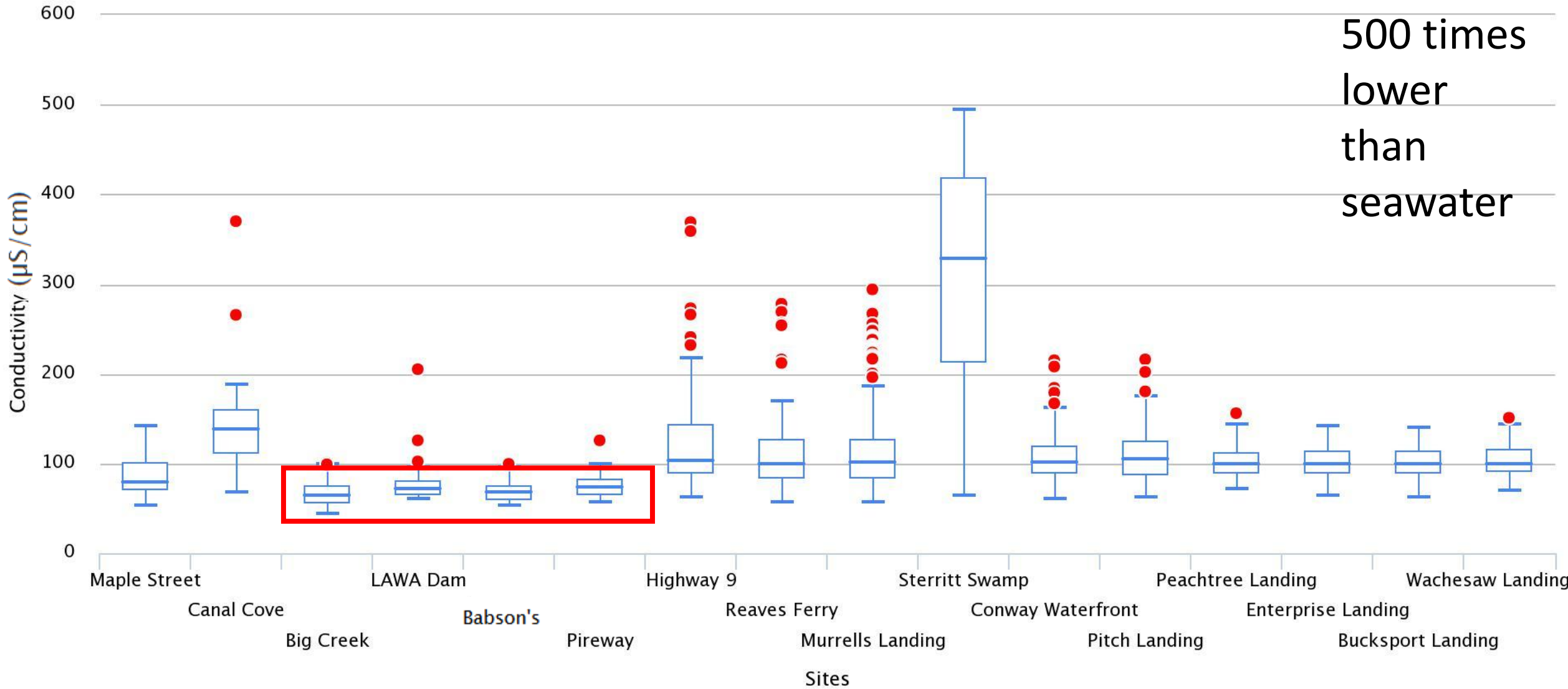
Data collected between March 01, 2012 and February 17, 2015



Dissolved Salts

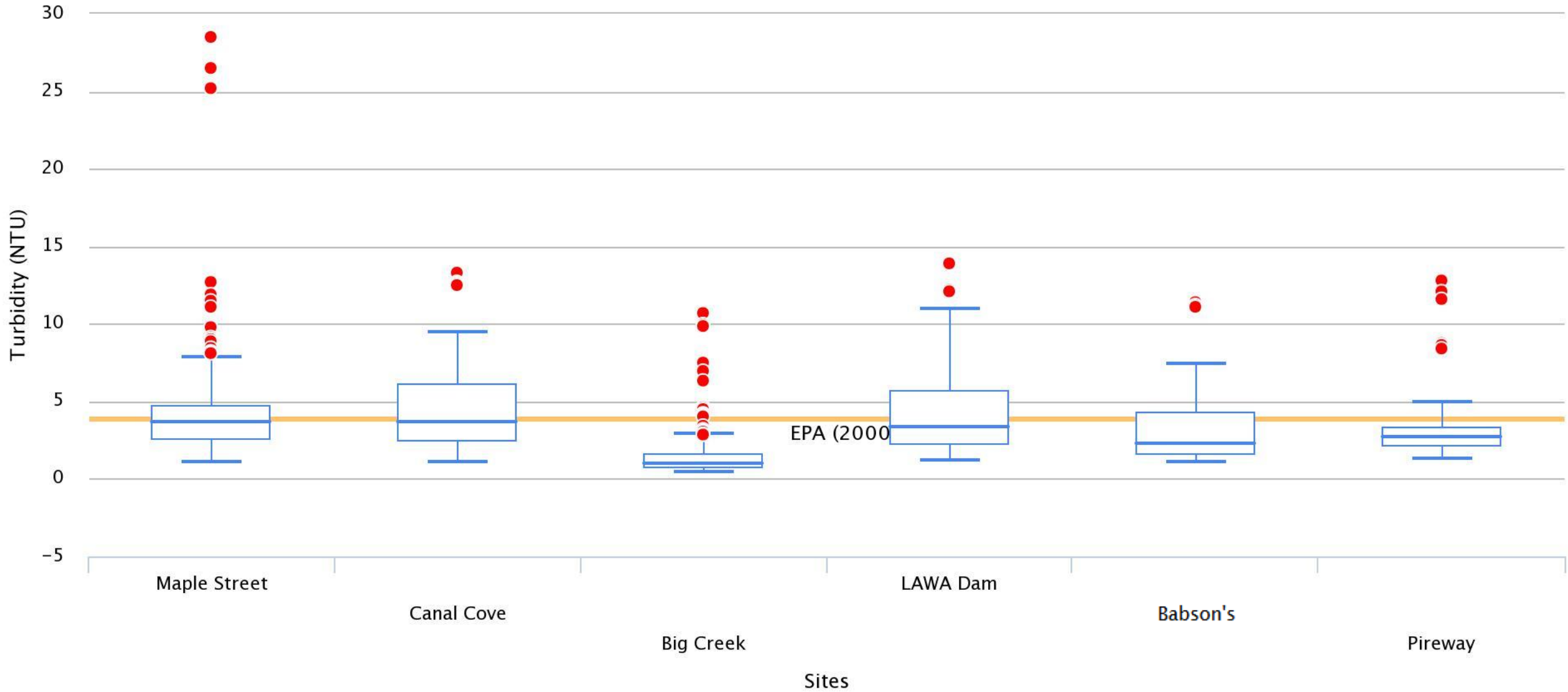
Conductivity ($\mu\text{S}/\text{cm}$)

Data collected between March 01, 2012 and February 17, 2015



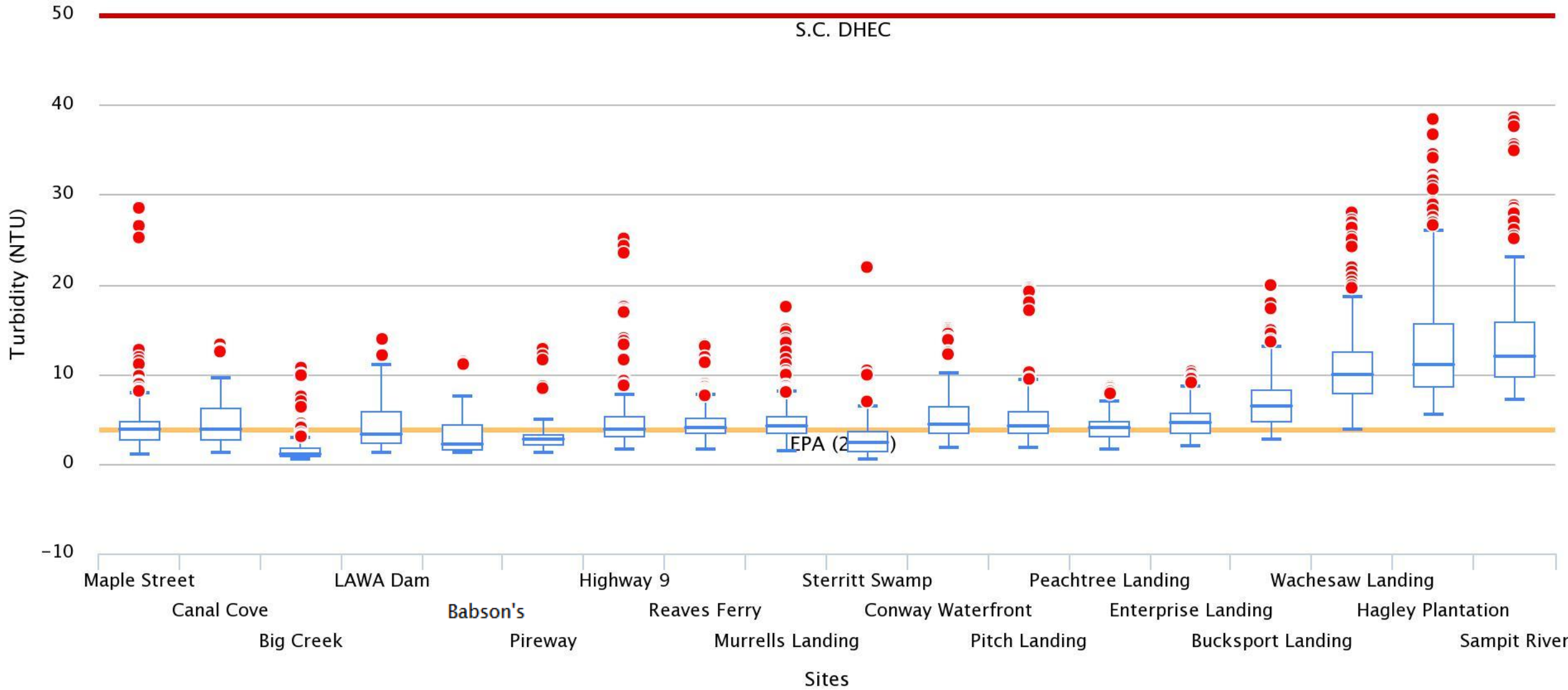
Turbidity (NTU)

Data collected between March 01, 2012 and February 17, 2015



Turbidity (NTU)

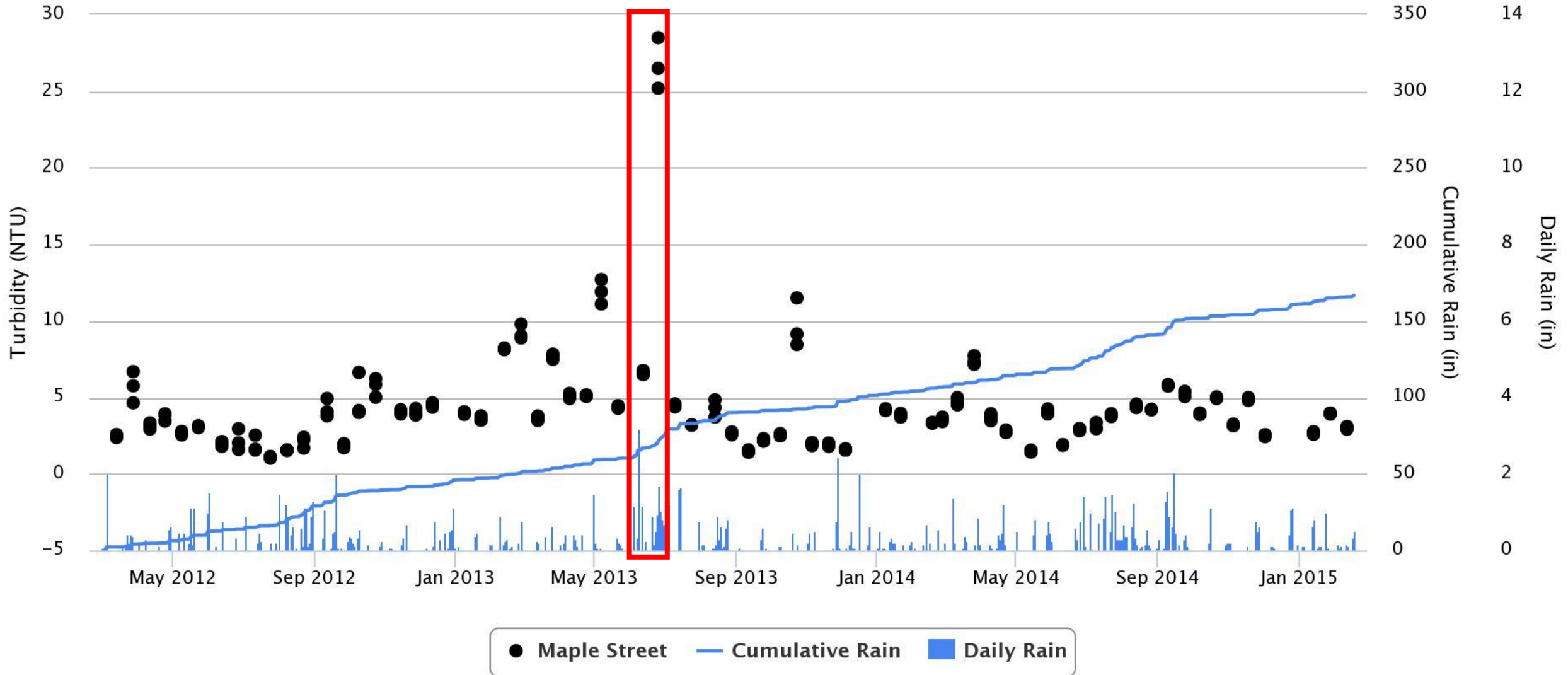
Data collected between March 01, 2012 and February 17, 2015



Turbidity (NTU) for Maple Street

Data collected between March 01, 2012 and February 17, 2015

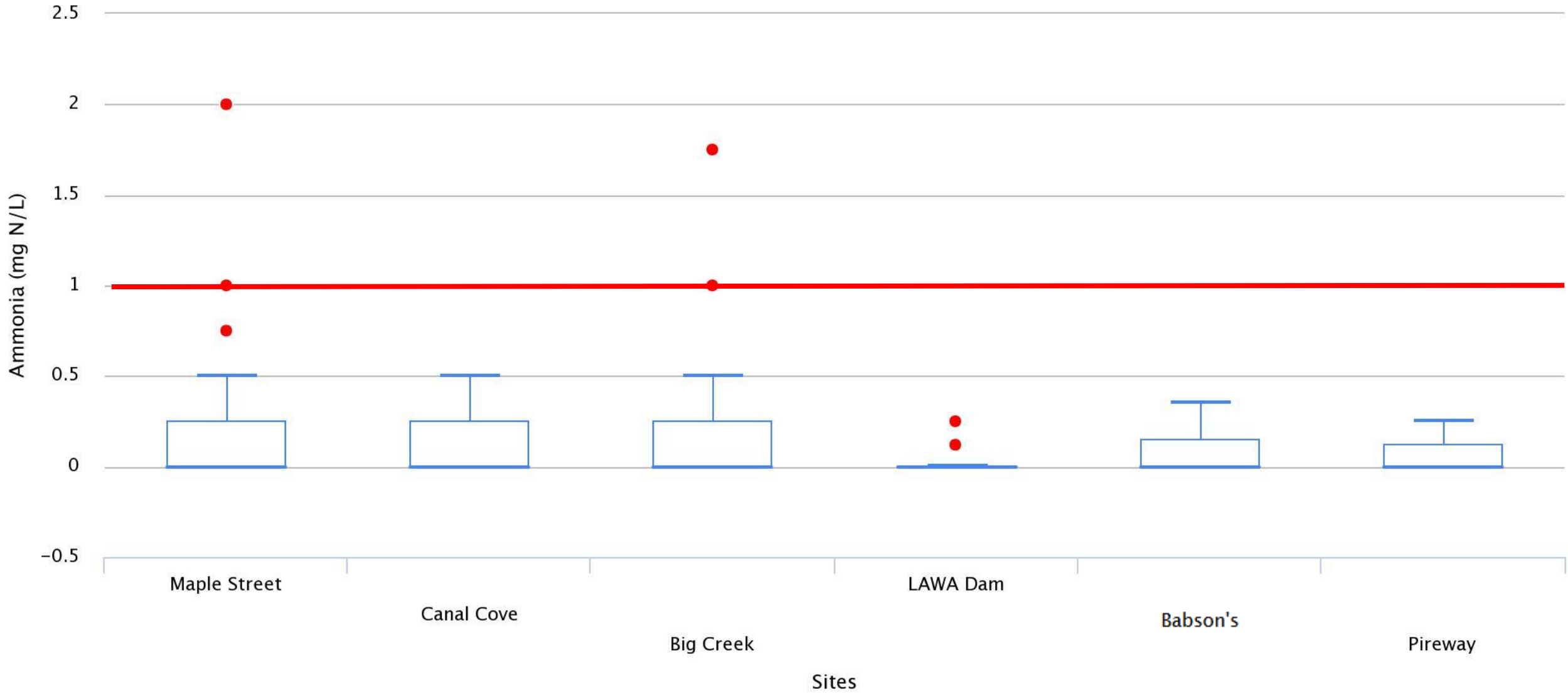
Hold down shift key to pan



2 in rain 9-10 days prior

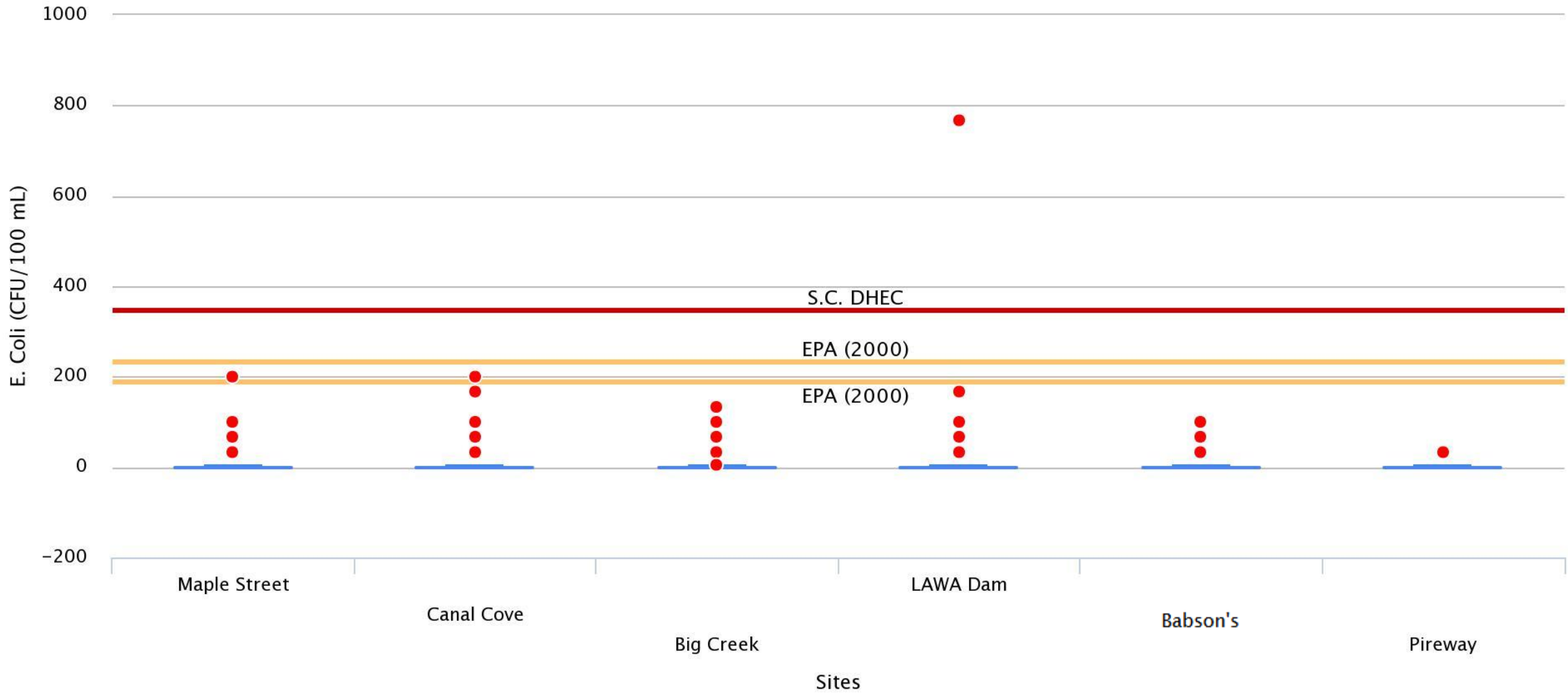
Ammonia (mg N/L)

Data collected between March 01, 2012 and February 17, 2015

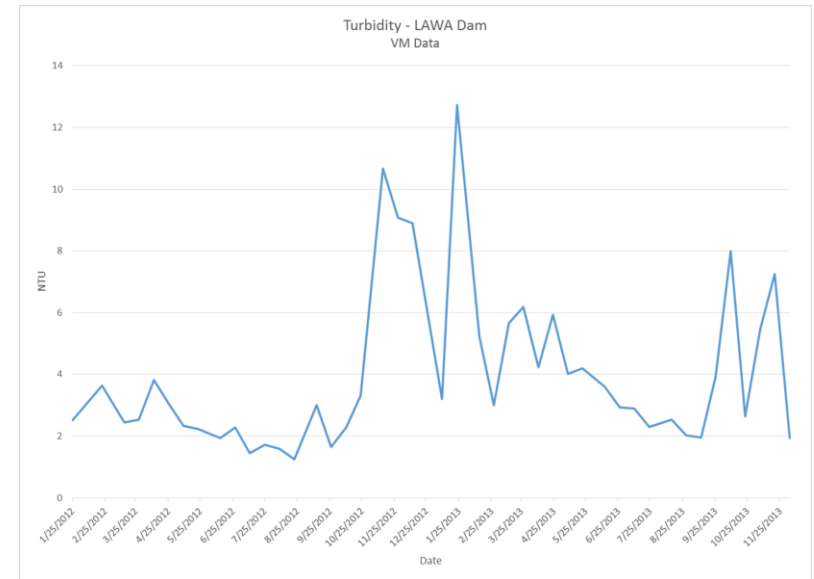
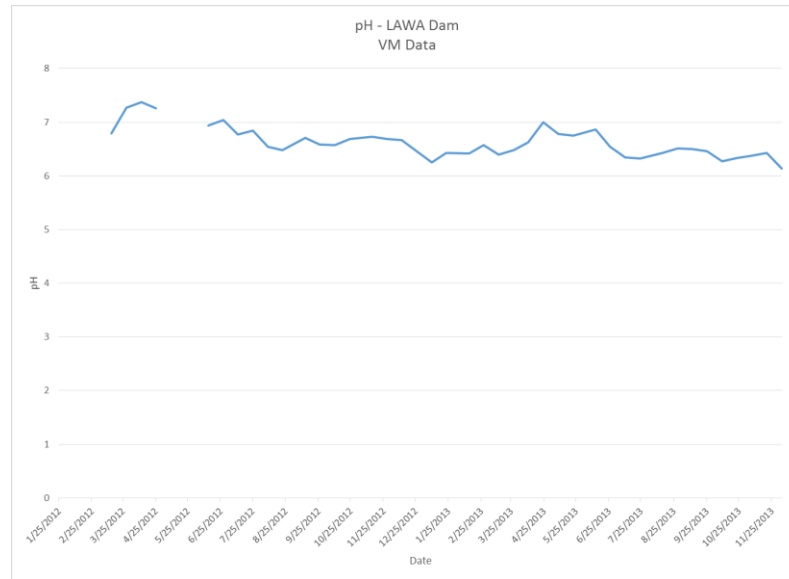
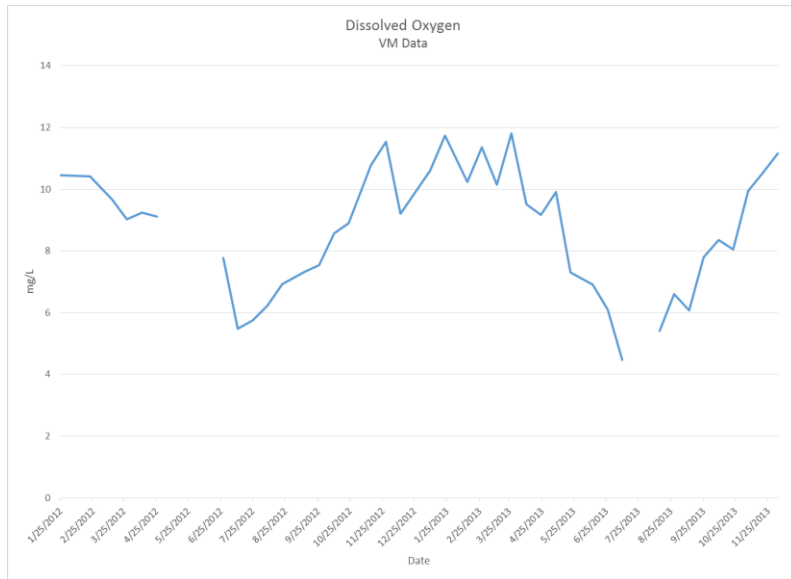
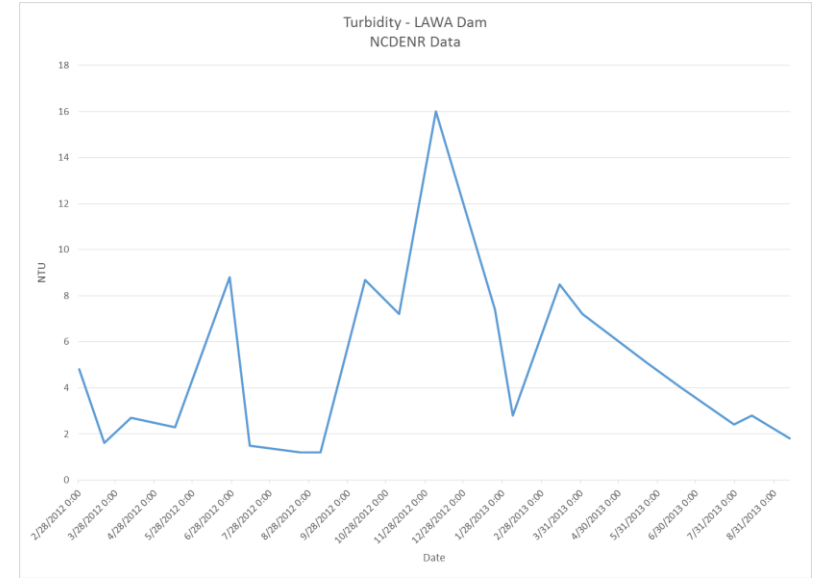
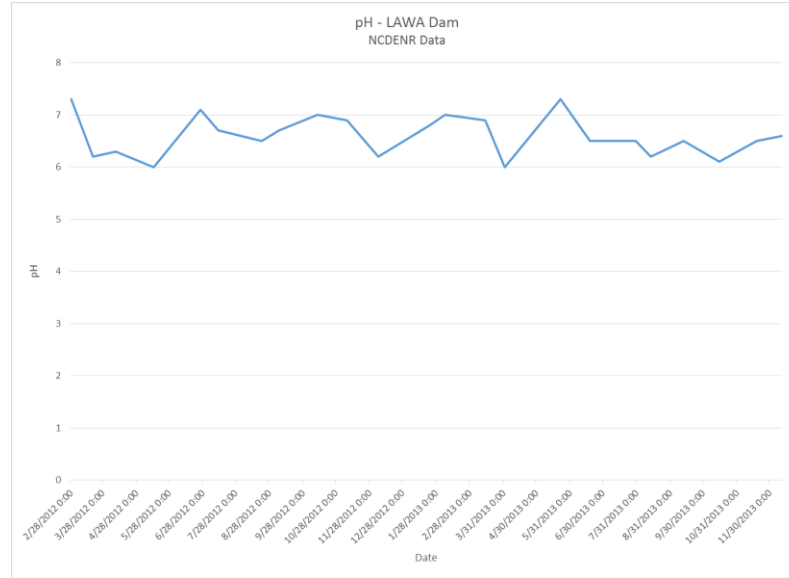
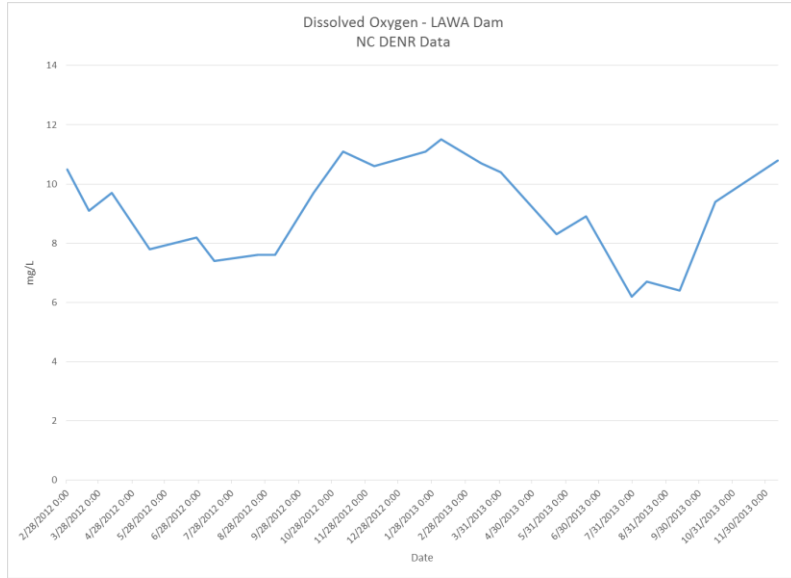


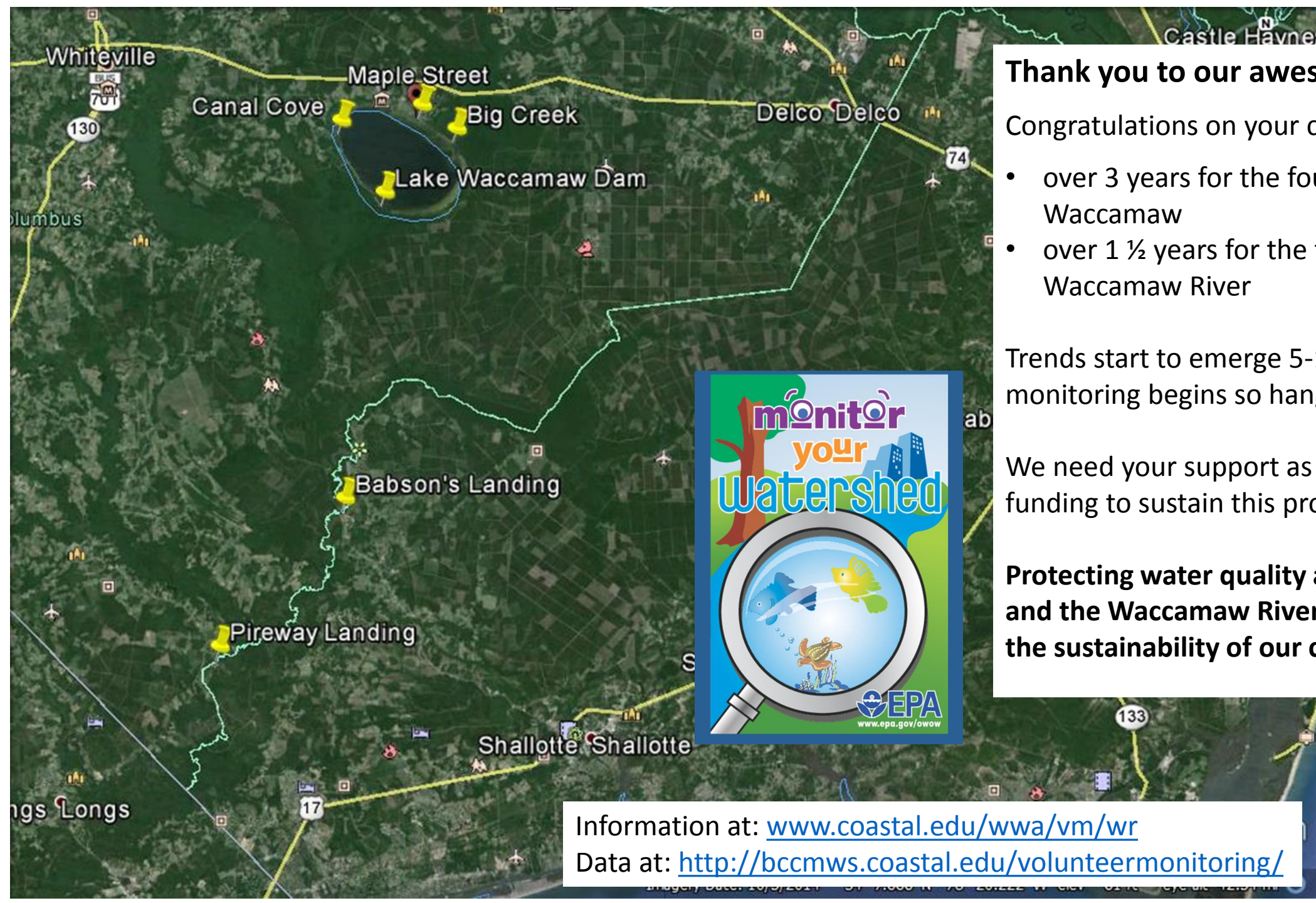
E. Coli (CFU/100 mL)

Data collected between March 01, 2012 and February 17, 2015



Comparison of VM Data to NCDENR Data (2012-2013)





Thank you to our awesome volunteers!

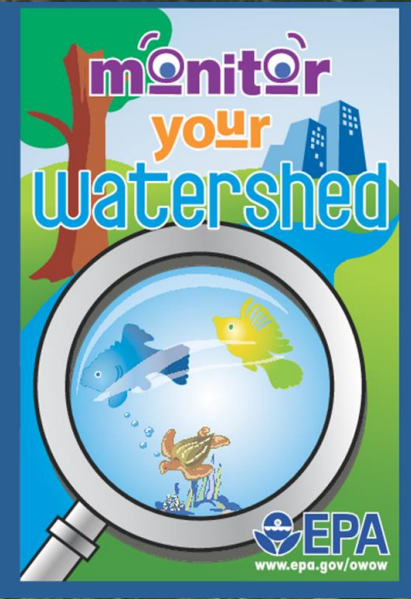
Congratulations on your commitment:

- over 3 years for the four sites at Lake Waccamaw
- over 1 ½ years for the two sites on the Waccamaw River

Trends start to emerge 5-10 years after monitoring begins so hang in there!

We need your support as we continue to seek funding to sustain this project long term.

Protecting water quality at Lake Waccamaw and the Waccamaw River is a commitment to the sustainability of our community.



Information at: www.coastal.edu/wwa/vm/wr
Data at: <http://bccmws.coastal.edu/volunteermonitoring/>

